

Converting Colors

YUV(201.0450, -1.5012,
14.8695)

Have a look what the booklet for
YUV(201.0450, -1.5012, 14.8695)
contains.

YUV(201.0450, -1.5012, 14.8695)	3
<i>Conversions</i>	4
<i>Details</i>	6
<i>Harmonies</i>	12
<i>Previews</i>	24
<i>Color Blindness Simulation</i>	28
<i>CSS Examples</i>	31

Color

**YUV(201.0450, -1.5012,
14.8695)**

Conversions

Conversions Part 1

Format	Color
Hex	DAC1C6
RGB	218, 193, 198
RGB Percent	85%, 76%, 78%
CMY	0.1451, 0.2431, 0.2235
CMYK	0.00, 0.11, 0.09, 0.15
HSL	348°, 25%, 81%
HSV	348°, 11%, 85%
XYZ	58.1764, 57.1226, 61.3856
YIQ	201.0450, 13.2950, 6.8550

Conversions

Conversions Part 2

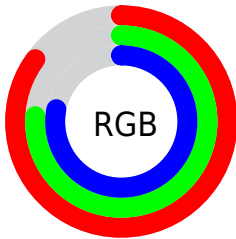
Format	Color
R _Y B	218, 193, 198
Decimal	14336454
CIE Lab	80.25, 9.66, 0.72
CIE LCh	80, 9.691, 4.288
Yxy	57.1226, 0.3293, 0.3233
Android (android.graphics.Color)	4292526534 (0xFFDAC1C6)
YUV	201.0450, -1.5012, 14.8695
Hunter-Lab	75.5795, 5.1343, 4.7503

Details

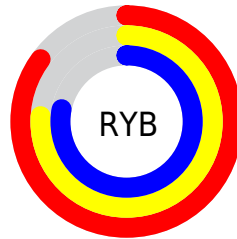
The YUV color $201.0450, -1.5012, 14.8695$ is a light color, and the websafe version is hex `CCCCCC`. A complement of this color would be $209.9550, 1.5012, -14.8695$, and the grayscale version is $201.0000, 0.0000, 0.0000$.

A 20% lighter version of the original color is $251.4780, 1.7363, 3.0888$, and $146.7460, -1.3538, 14.2548$ is the 20% darker color. If you saturate the color by 10%, you get $186.1930, -2.5601, 27.8947$, and if you desaturate by 10%, it is $215.8970, -0.4422, 1.8443$.

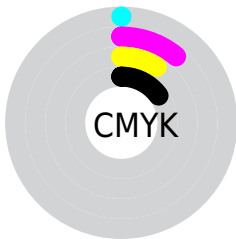
Distribution



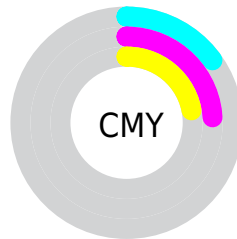
- Red (85%)
- Green (76%)
- Blue (78%)



- Red (85%)
- Yellow (76%)
- Blue (78%)



- Cyan (0%)
- Magenta (11%)
- Yellow (9%)
- Black (15%)



- Cyan (15%)
- Magenta (24%)
- Yellow (22%)

Brightness & Saturation Gradients

These gradients show how the YUV color 201.0450, -1.5012, 14.8695 changes by changing the brightness by 10 percent. The first figure shows a shift by +10% for each color and the second figure -10%.


Similar to the brightness gradients but the following saturation gradients show a change of the YUV color 201.0450, -1.5012, 14.8695 by changing the saturation by 10% instead.

 201.0450, -1.5012,
14.8695


 201.0450, -1.5012,
14.8695


255.0000, 0.0000,
0.0000


 173.7460, -1.3538,
14.2548


 251.4780, 1.7363,
3.0888


 146.7460, -1.3538,
14.2548

 121.4470, -1.2064,
13.6400

 96.1480, -1.0590,
13.0252

 72.4360, -1.2009,
11.8956

 50.1370, -1.0535,
11.2809

 28.8380, -0.9061,

10.6661

■ 6.5780, -3.2430,
13.5251

■ 0.0000, 0.0000,
0.0000

■ 201.0450, -1.5012,
14.8695

■ 201.0450, -1.5012,
14.8695

■ 186.1930, -2.5601,
27.8947

■ 215.8970, -0.4422,
1.8443

■ 171.2270, -4.0559,
41.0199

■ 230.8630, 1.0535,
-11.2809

■ 156.9620, -5.4043,
53.5303

■ 243.3670, 3.2701,
-22.2469

■ 141.9960, -6.9000,
66.6555

■ 243.9370, 5.4541,
-22.7467

■ 127.1440, -7.9590,
79.6807

■ 112.1780, -9.4548,
92.8059

■ 97.3260, -10.5137,
105.8311

■ 82.9470, -12.2989,
118.4415

■ 70.1980, -12.9156,
129.6224

Harmonies

Analogous

The Analogous color harmony consists of three colors that are next to each other on the color wheel.



200.8640, 3.0250, 9.7663



201.0450, -1.5012, 14.8695



200.6060, -5.7218, 15.2545

Triad

The Triadic color harmony groups three colors that are evenly spaced from another and form a triangle on the color wheel.



201.0450, -1.5012, 14.8695



197.8550, -6.8305, -2.5038



197.5020, 8.6265, -13.5953

Complementary

The Complementary color scheme is a pair of colors which are on the opposite of each other on the color wheel.



201.0450, -1.5012, 14.8695



209.9550, 1.5012, -14.8695

Split Complementary

Split-complementary colors differ from the complementary color scheme. The scheme consists of three colors, the original color and two neighbors of the complement color.



196.4970, 6.1640, -17.0989



201.0450, -1.5012, 14.8695



196.8370, -2.8776, -10.3810

Square

The Square scheme is like the rectangle color scheme, but the four colors are evenly spaced on the color wheel.



201.0450, -1.5012, 14.8695



198.7420, -8.7468, 5.4883



196.3570, 1.7960, -16.0991



198.6600, 9.0416, -6.7178

Rectangle

The Rectangle color scheme consists of four colors that form a rectangle on the color wheel.



201.0450, -1.5012, 14.8695



200.1390, -7.4635, 13.9101



196.3570, 1.7960, -16.0991



197.2630, 7.7583, -15.1397

Sweetspot

The Sweet Spot groups the original color and five complimentary colors.



201.0450, -1.5012, 14.8695



249.6200, -0.3057, 4.7183



201.8300, 7.9718, 9.7961



123.9080, -0.4476, 3.5887



0.0000, 0.0000, 0.0000



128.0000, 0.0000, 0.0000

Same Dimension

The Same Dimension uses a secret algorithm to generate beautiful new colors.



201.0450, -1.5012, 14.8695



230.5620, -2.2491, 21.4321



205.1710, -6.0003, 11.2510



102.5170, -0.7479, 6.5626



55.7170, -10.2135, 102.8572



14.7800, -2.8495, 27.3799

Inverse Universe

The Inverse Universe completely reimagines the original color for something new.



201.0450, -1.5012, 14.8695



230.5620, -2.2491, 21.4321



206.4160, 5.7109, -11.7658



102.5170, -0.7479, 6.5626



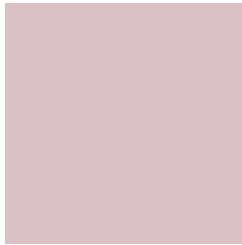
55.7170, -10.2135, 102.8572



14.7800, -2.8495, 27.3799

Previews

White Background



This preview shows how the YUV color 201.0450, -1.5012, 14.8695 looks on a white background.

Color Contrast Check

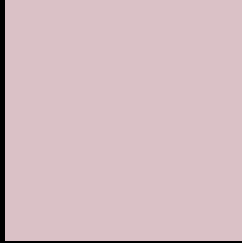
Large Text (above 18pt) WCAG AA × Fail

Any Text WCAG AA × Fail

Large Text (above 18pt) WCAG AAA × Fail

Any Text WCAG AAA × Fail

Black Background



This preview shows how the YUV color 201.0450, -1.5012, 14.8695 looks on a black background.

Color Contrast Check

Large Text (above 18pt) WCAG AA ✓ Pass

Any Text WCAG AA ✓ Pass

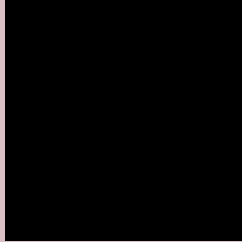
Large Text (above 18pt) WCAG AAA ✓ Pass

Any Text WCAG AAA ✓ Pass

If you want to check with other color combinations, try the [Color Contrast Checker](#).

YUV 201.0450, -1.5012, 14.8695

Background



This preview shows how black text looks on a background with the YUV color 201.0450, -1.5012, 14.8695.



This preview shows how white text looks on a background with the YUV color 201.0450, -1.5012,

Color Blindness Simulation

Color vision deficiency is a very complex topic, and I could not describe the different causes any better than Wikipedia does, so if you want to learn more, you should check out their [article about color blindness](#).

Dichromacy



Original Color

201.0450, -1.5012, 14.8695

Protanopia

199.5380, 0.7208, 2.1592

Deuteranopia

201.3440, -1.6486, 15.4843



Tritanopia

201.7830, 2.5720, 15.0993

Trichromacy



Original Color

201.0450, -1.5012, 14.8695

Protanomaly

200.0440, -0.0217, 6.9774

Deuteranomaly

201.3440, -1.6486, 15.4843

Tritanomaly

201.4410, 1.2616, 15.3992

Monochromacy



Original Color

201.0450, -1.5012, 14.8695

Achromatopsia

201.0000, 0.0000, 0.0000

Achromatomaly

200.9190, -0.4531, 5.3330

CSS Examples

Text

The CSS property to change the color of the text to YUV 201.0450, -1.5012, 14.8695 is called "color". The color property can be set on classes, ids or directly on the HTML element.

This example shows how text in the color `rgb(218, 193, 198)` looks like.

```
.text, #text, p{  
    color:rgb(218, 193, 198)  
}
```

If you want to add a text shadow in that color use the text-shadow property, you can generate a text shadow directly with our [CSS Text Shadow Generator](#).

Here you see how black text with a 4 pixel rgb(218, 193, 198) colored shadow looks like.

```
.shadow{ text-shadow: 4px 4px 2px rgb(218, 193, 198) }
```

Border

The CSS property to change the border of an element to YUV 201.0450, -1.5012, 14.8695 is called "border". The border property can be set on classes, ids or directly on the HTML element.

This example shows the color as border, it can be applied via the CSS property "border" or "border-color".

```
.border, #border, table{ border:4px solid rgb(218, 193, 198) }
```


If only the border color should be changed use the property `border-color`.

```
.border{ border-color:rgb(218, 193, 198) }
```

If you want to add a box shadow in that color use:

Here you see how a box with a 4 pixel `rgb(218, 193, 198)` colored shadow looks like.

```
.boxshadow{ -moz-box-shadow:4px 4px 4px  
4px rgb(218, 193, 198); -webkit-box-  
shadow:4px 4px 4px 4px rgb(218, 193, 198);  
box-shadow:4px 4px 4px 4px rgb(218, 193,  
198) }
```

Background

The CSS property to change the background color of an element to YUV 201.0450, -1.5012, 14.8695 is called "background". The background property can be set on classes, ids or directly on the HTML element.

```
.background, #background, body{  
background: rgb(218, 193, 198) }
```

If only the background color should be changed can be used:

```
.background{ background-color: rgb(218,  
193, 198) }
```

This example shows the color as background, it is applied via the CSS property "background".

To optimize and compress your CSS code, you can use our [online CSS compressor and optimizer](#) based on csstidy. If you want to create a linear or radial gradient as background or border, check our [CSS Gradient Generator](#).

Hey! You found this booklet interesting? Support Converting Colors with the new Membership Option!

The pro membership hides all ads, plus gives you double the colors in the color bucket, and more awesome pro features!

[Learn more, Memberships starting at \\$2.50/m!](#)

**Follow me
on Twitter!**

@ConvertingColor