

Converting Colors

YUV(201.2900, -3.1010,
14.6547)

Have a look what the booklet for
YUV(201.2900, -3.1010, 14.6547)
contains.

YUV(201.2900, -3.1010, 14.6547)	3
<i>Conversions</i>	4
<i>Details</i>	6
<i>Harmonies</i>	12
<i>Previews</i>	24
<i>Color Blindness Simulation</i>	28
<i>CSS Examples</i>	31

Color

**YUV(201.2900, -3.1010,
14.6547)**

Conversions

Conversions Part 1

Format	Color
Hex	DAC2C3
RGB	218, 194, 195
RGB Percent	85%, 76%, 76%
CMY	0.1451, 0.2392, 0.2353
CMYK	0.00, 0.11, 0.11, 0.15
HSL	358°, 24%, 81%
HSV	358°, 11%, 85%
XYZ	58.0556, 57.4291, 59.6548
YIQ	201.2900, 13.9830, 5.3990

Conversions

Conversions Part 2

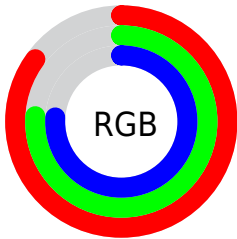
Format	Color
R _Y B	218, 194, 195
Decimal	14336707
CIE Lab	80.42, 8.63, 2.59
CIE LCh	80, 9.009, 16.699
Yxy	57.4291, 0.3315, 0.3279
Android (android.graphics.Color)	4292526787 (0xFFDAC2C3)
YUV	201.2900, -3.1010, 14.6547
Hunter-Lab	75.7820, 4.1279, 6.3749

Details

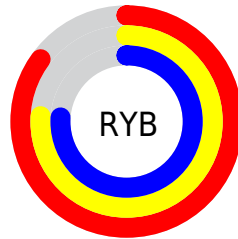
The YUV color $201.2900, -3.1010, 14.6547$ is a light color, and the websafe version is hex `CCCCCC`. A complement of this color would be $210.7100, 3.1010, -14.6547$, and the grayscale version is $201.0000, 0.0000, 0.0000$.

A 20% lighter version of the original color is $252.3100, -0.1528, 2.3591$, and $146.9910, -2.9536, 14.0399$ is the 20% darker color. If you saturate the color by 10%, you get $185.9820, -5.9071, 28.0798$, and if you desaturate by 10%, it is $216.5980, -0.2948, 1.2296$.

Distribution



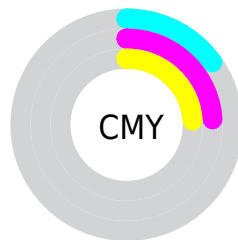
- Red (85%)
- Green (76%)
- Blue (76%)



- Red (85%)
- Yellow (76%)
- Blue (76%)



- Cyan (0%)
- Magenta (11%)
- Yellow (11%)
- Black (15%)



- Cyan (15%)
- Magenta (24%)
- Yellow (24%)

Brightness & Saturation Gradients

These gradients show how the YUV color 201.2900, -3.1010, 14.6547 changes by changing the brightness by 10 percent. The first figure shows a shift by +10% for each color and the second figure -10%.

Similar to the brightness gradients but the following saturation gradients show a change of the YUV color 201.2900, -3.1010, 14.6547 by changing the saturation by 10% instead.

■ 201.2900, -3.1010,
14.6547

■ 201.2900, -3.1010,
14.6547

■ 255.0000, 0.0000,
0.0000

■ 173.9910, -2.9536,
14.0399

■ 252.3100, -0.1528,
2.3591

■ 146.9910, -2.9536,
14.0399

■ 121.6920, -2.8062,
13.4251

■ 96.3930, -2.6587,
12.8103

■ 72.7950, -2.3639,
11.5808

■ 50.4960, -2.2165,
10.9660

■ 29.1970, -2.0691,

10.3512

■ 6.2790, -3.0955,
12.9103

■ 0.0000, 0.0000,
0.0000

■ 201.2900, -3.1010,
14.6547

■ 201.2900, -3.1010,
14.6547

■ 185.9820, -5.9071,
28.0798

■ 216.5980, -0.2948,
1.2296

■ 170.6740, -8.7133,
41.5049

■ 231.9060, 2.5113,
-12.1956

■ 155.9530,
-11.8088, 54.4152

■ 243.9370, 5.4541,
-22.7467

■ 140.6450,
-14.6150, 67.8403

■ 125.4510,
-16.9843, 81.1655

■ 110.1430,
-19.7905, 94.5906

■ 94.8350, -22.5967,
108.0157

■ 80.1140, -25.6922,
120.9260

■ 66.2080, -28.2035,
133.1216

Harmonies

Analogous

The Analogous color harmony consists of three colors that are next to each other on the color wheel.



201.4190, 1.2724, 11.9105



201.2900, -3.1010, 14.6547



200.4810, -6.1531, 13.6102

Triad

The Triadic color harmony groups three colors that are evenly spaced from another and form a triangle on the color wheel.



201.2900, -3.1010, 14.6547



198.0010, -4.9305, -5.2629



198.5240, 8.6157, -10.1065

Complementary

The Complementary color scheme is a pair of colors which are on the opposite of each other on the color wheel.



201.2900, -3.1010, 14.6547



210.7100, 3.1010, -14.6547

Split Complementary

Split-complementary colors differ from the complementary color scheme. The scheme consists of three colors, the original color and two neighbors of the complement color.



197.6220, 6.5954, -15.4545



201.2900, -3.1010, 14.6547



196.6950, -0.8356, -12.0105

Square

The Square scheme is like the rectangle color scheme, but the four colors are evenly spaced on the color wheel.



201.2900, -3.1010, 14.6547



198.6600, -7.7204, 2.9292



197.1120, 3.3958, -15.8842



200.3400, 7.7204, -2.9292

Rectangle

The Rectangle color scheme consists of four colors that form a rectangle on the color wheel.



201.2900, -3.1010, 14.6547



200.3020, -8.0369, 11.1361



197.1120, 3.3958, -15.8842



198.1000, 8.3317, -12.3657

Sweetspot

The Sweet Spot groups the original color and five complimentary colors.



201.2900, -3.1010, 14.6547



249.5060, -0.7425, 4.8182



203.6130, 7.0928, 11.7404



123.9080, -0.4476, 3.5887



0.0000, 0.0000, 0.0000



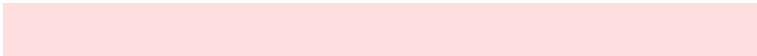
128.0000, 0.0000, 0.0000

Same Dimension

The Same Dimension uses a secret algorithm to generate beautiful new colors.



201.2900, -3.1010, 14.6547



231.9810, -4.4276, 20.1877



207.6330, -6.7211, 9.0919



102.2890, -1.6215, 6.7625



52.5250, -22.4438, 105.6566



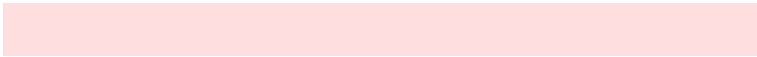
13.9820, -5.9071, 28.0798

Inverse Universe

The Inverse Universe completely reimagines the original color for something new.



201.2900, -3.1010, 14.6547



231.9810, -4.4276, 20.1877



204.3670, 6.7211, -9.0919



102.2890, -1.6215, 6.7625



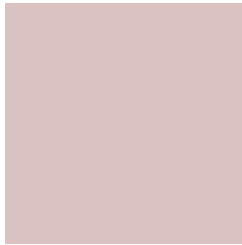
52.5250, -22.4438, 105.6566



13.9820, -5.9071, 28.0798

Previews

White Background



This preview shows how the YUV color 201.2900, -3.1010, 14.6547 looks on a white background.

Color Contrast Check

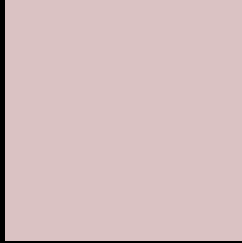
Large Text (above 18pt) WCAG AA × Fail

Any Text WCAG AA × Fail

Large Text (above 18pt) WCAG AAA × Fail

Any Text WCAG AAA × Fail

Black Background



This preview shows how the YUV color 201.2900, -3.1010, 14.6547 looks on a black background.

Color Contrast Check

Large Text (above 18pt) WCAG AA ✓ Pass

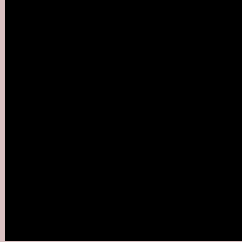
Any Text WCAG AA ✓ Pass

Large Text (above 18pt) WCAG AAA ✓ Pass

Any Text WCAG AAA ✓ Pass

If you want to check with other color combinations, try the [Color Contrast Checker](#).

YUV 201.2900, -3.1010, 14.6547 Background



This preview shows how black text looks on a background with the YUV color 201.2900, -3.1010, 14.6547.



This preview shows how white text looks on a background with the YUV color 201.2900, -3.1010,

Color Blindness Simulation

Color vision deficiency is a very complex topic, and I could not describe the different causes any better than Wikipedia does, so if you want to learn more, you should check out their [article about color blindness](#).

Dichromacy



Original Color

201.2900, -3.1010, 14.6547

Protanopia

200.3810, -1.1738, 3.1739

Deuteranopia

201.3010, -3.1064, 16.3990



Tritanopia

202.0820, 2.4246, 15.7141

Trichromacy



Original Color

201.2900, -3.1010, 14.6547

Protanomaly

200.5880, -1.7689, 7.3773

Deuteranomaly

201.0020, -2.9590, 15.7842

Tritanomaly

201.9140, 0.5354, 14.9844

Monochromacy



Original Color

201.2900, -3.1010, 14.6547

Achromatopsia

201.0000, 0.0000, 0.0000

Achromatomaly

200.8050, -0.8899, 5.4330

CSS Examples

Text

The CSS property to change the color of the text to YUV 201.2900, -3.1010, 14.6547 is called "color". The color property can be set on classes, ids or directly on the HTML element.

This example shows how text in the color `rgb(218, 194, 195)` looks like.

```
.text, #text, p{  
    color:rgb(218, 194, 195)  
}
```

If you want to add a text shadow in that color use the text-shadow property, you can generate a text shadow directly with our [CSS Text Shadow Generator](#).

Here you see how black text with a 4 pixel rgb(218, 194, 195) colored shadow looks like.

```
.shadow{ text-shadow: 4px 4px 2px rgb(218, 194, 195) }
```

Border

The CSS property to change the border of an element to YUV 201.2900, -3.1010, 14.6547 is called "border". The border property can be set on classes, ids or directly on the HTML element.

This example shows the color as border, it can be applied via the CSS property "border" or "border-color".

```
.border, #border, table{ border:4px solid rgb(218, 194, 195) }
```


If only the border color should be changed use the property border-color.

```
.border{ border-color:rgb(218, 194, 195) }
```

If you want to add a box shadow in that color use:

Here you see how a box with a 4 pixel rgb(218, 194, 195) colored shadow looks like.

```
.boxshadow{ -moz-box-shadow:4px 4px 4px  
4px rgb(218, 194, 195); -webkit-box-  
shadow:4px 4px 4px 4px rgb(218, 194, 195);  
box-shadow:4px 4px 4px 4px rgb(218, 194,  
195) }
```

Background

The CSS property to change the background color of an element to YUV 201.2900, -3.1010, 14.6547 is called "background". The background property can be set on classes, ids or directly on the HTML element.

```
.background, #background, body{  
background: rgb(218, 194, 195) }
```

If only the background color should be changed can be used:

```
.background{ background-color: rgb(218,  
194, 195) }
```

This example shows the color as background, it is applied via the CSS property "background".

To optimize and compress your CSS code, you can use our [online CSS compressor and optimizer](#) based on csstidy. If you want to create a linear or radial gradient as background or border, check our [CSS Gradient Generator](#).

Hey! You found this booklet interesting? Support Converting Colors with the new Membership Option!

The pro membership hides all ads, plus gives you double the colors in the color bucket, and more awesome pro features!

[Learn more, Memberships starting at \\$2.50/m!](#)

**Follow me
on Twitter!**

@ConvertingColor