

Converting Colors

YUV(201.3080, -7.0538,
22.5319)

Have a look what the booklet for
YUV(201.3080, -7.0538, 22.5319)
contains.

YUV(201.3080, -7.0538, 22.5319)	3
<i>Conversions</i>	4
<i>Details</i>	6
<i>Harmonies</i>	12
<i>Previews</i>	24
<i>Color Blindness Simulation</i>	28
<i>CSS Examples</i>	31

Color

**YUV(201.3080, -7.0538,
22.5319)**

Conversions

Conversions Part 1

Format	Color
Hex	E3BFBB
RGB	227, 191, 187
RGB Percent	89%, 75%, 73%
CMY	0.1098, 0.2510, 0.2667
CMYK	0.00, 0.16, 0.18, 0.11
HSL	6°, 42%, 81%
HSV	6°, 18%, 89%
XYZ	59.2790, 57.1804, 54.9263
YIQ	201.3080, 22.7400, 6.3880

Conversions

Conversions Part 2

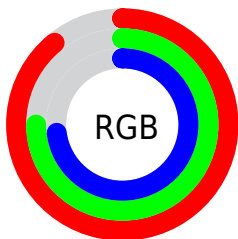
Format	Color
R _Y B	227, 191, 187
Decimal	14925755
CIE Lab	80.28, 12.19, 6.79
CIE LCh	80, 13.953, 29.127
Yxy	57.1804, 0.3459, 0.3336
Android (android.graphics.Color)	4293115835 (0xFFE3BFBB)
YUV	201.3080, -7.0538, 22.5319
Hunter-Lab	75.6177, 7.6006, 9.8660

Details

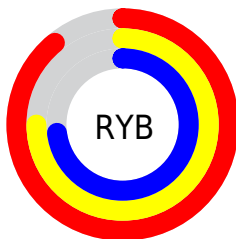
The YUV color $201.3080, -7.0538, 22.5319$ is a light color, and the websafe version is hex `FFCCCC`. A complement of this color would be $212.6920, 7.0538, -22.5319$, and the grayscale version is $201.0000, 0.0000, 0.0000$.

A 20% lighter version of the original color is $248.9360, -2.9264, 5.3181$, and $147.4110, -6.6116, 20.6876$ is the 20% darker color. If you saturate the color by 10%, you get $186.9460, -11.3124, 35.1274$, and if you desaturate by 10%, it is $215.6700, -2.7953, 9.9364$.

Distribution



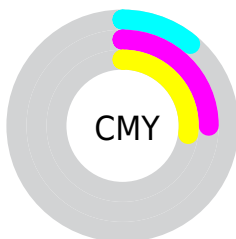
- Red (89%)
- Green (75%)
- Blue (73%)



- Red (89%)
- Yellow (75%)
- Blue (73%)



- Cyan (0%)
- Magenta (16%)
- Yellow (18%)
- Black (11%)




- Cyan (11%)
- Magenta (25%)
- Yellow (27%)

Brightness & Saturation Gradients

These gradients show how the YUV color 201.3080, -7.0538, 22.5319 changes by changing the brightness by 10 percent. The first figure shows a shift by +10% for each color and the second figure -10%.

Similar to the brightness gradients but the following saturation gradients show a change of the YUV color 201.3080, -7.0538, 22.5319 by changing the saturation by 10% instead.


 201.3080, -7.0538,
22.5319

 201.3080, -7.0538,
22.5319


255.0000, 0.0000,
0.0000


 174.0090, -6.9064,
21.9171


 248.9360, -2.9264,
5.3181

 147.4110, -6.6116,
20.6876

 121.2260, -6.0274,
19.9728

 96.5140, -6.1694,
18.8432

 72.3290, -5.5852,
18.1285

 49.7310, -5.2904,
16.8989

 28.2470, -4.5588,

15.5694

■ 7.7740, -3.8326,
15.9842

■ 0.0000, 0.0000,
0.0000

■ 201.3080, -7.0538,
22.5319

■ 201.3080, -7.0538,
22.5319

■ 186.9460,
-11.3124, 35.1274

■ 215.6700, -2.7953,
9.9364

■ 172.1110,
-14.8447, 48.1377

■ 230.5050, 0.7370,
-3.0739

■ 157.7490,
-19.1033, 60.7331

■ 244.8670, 4.9956,
-15.6694

■ 142.8000,
-23.0724, 73.8434

■ 246.6280, 4.1274,
-17.2138

■ 128.5520,
-26.8941, 86.3389

■ 113.6030,
-30.8633, 99.4492

■ 99.2410, -35.1218,
112.0446

■ 84.8790, -39.3803,
124.6401

■ 81.3740, -40.1174,
127.7140

Harmonies

Analogous

The Analogous color harmony consists of three colors that are next to each other on the color wheel.



201.6050, -0.7913, 20.5174



201.3080, -7.0538, 22.5319



200.4340, -11.5530, 18.9134

Triad

The Triadic color harmony groups three colors that are evenly spaced from another and form a triangle on the color wheel.



201.3080, -7.0538, 22.5319



195.5440, -5.1982, -12.7551



198.3650, 13.1311, -11.7211

Complementary

The Complementary color scheme is a pair of colors which are on the opposite of each other on the color wheel.



201.3080, -7.0538, 22.5319



212.6920, 7.0538, -22.5319

Split Complementary

Split-complementary colors differ from the complementary color scheme. The scheme consists of three colors, the original color and two neighbors of the complement color.



196.3700, 12.1426, -21.3725



201.3080, -7.0538, 22.5319



194.9110, 1.5229, -21.8469

Square

The Square scheme is like the rectangle color scheme, but the four colors are evenly spaced on the color wheel.



201.3080, -7.0538, 22.5319



197.2420, -10.4723, -1.0892



194.6100, 8.0803, -25.0910



200.4590, 10.6197, 0.4745

Rectangle

The Rectangle color scheme consists of four colors that form a rectangle on the color wheel.



201.3080, -7.0538, 22.5319



199.7600, -12.6997, 13.3655



194.6100, 8.0803, -25.0910



197.9300, 12.8525, -15.7246

Sweetspot

The Sweet Spot groups the original color and five complimentary colors.



201.3080, -7.0538, 22.5319



247.0610, -2.4951, 6.9625



203.0640, 9.8284, 20.9919



122.9790, -1.4686, 4.4034



0.0000, 0.0000, 0.0000



128.0000, 0.0000, 0.0000

Same Dimension

The Same Dimension uses a secret algorithm to generate beautiful new colors.



201.3080, -7.0538, 22.5319



220.6680, -9.6963, 30.1092



213.0480, -12.8417, 12.2359



107.1750, -2.0583, 6.8625



64.0870, -31.5949, 100.7787



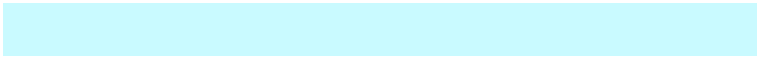
18.1840, -8.9647, 28.7796

Inverse Universe

The Inverse Universe completely reimagines the original color for something new.



212.6920, 7.0538, -22.5319



235.9190, 9.4069, -30.6240



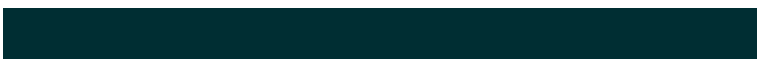
200.9520, 12.8417, -12.2359



110.8250, 2.0583, -6.8625



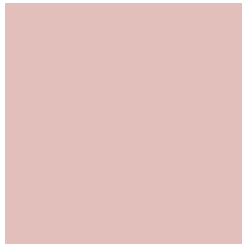
114.9130, 31.5949, -100.7787



32.8160, 8.9647, -28.7796

Previews

White Background



This preview shows how the YUV color 201.3080, -7.0538, 22.5319 looks on a white background.

Color Contrast Check

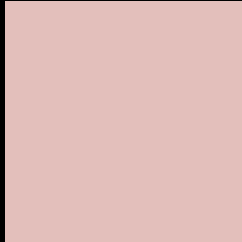
Large Text (above 18pt) WCAG AA × Fail

Any Text WCAG AA × Fail

Large Text (above 18pt) WCAG AAA × Fail

Any Text WCAG AAA × Fail

Black Background



This preview shows how the YUV color 201.3080, -7.0538, 22.5319 looks on a black background.

Color Contrast Check

Large Text (above 18pt) WCAG AA ✓ Pass

Any Text WCAG AA ✓ Pass

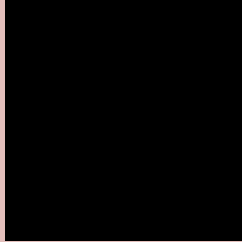
Large Text (above 18pt) WCAG AAA ✓ Pass

Any Text WCAG AAA ✓ Pass

If you want to check with other color combinations, try the [Color Contrast Checker](#).

YUV 201.3080, -7.0538, 22.5319

Background



This preview shows how black text looks on a background with the YUV color 201.3080, -7.0538, 22.5319.



This preview shows how white text looks on a background with the YUV color 201.3080, -7.0538,

Color Blindness Simulation

Color vision deficiency is a very complex topic, and I could not describe the different causes any better than Wikipedia does, so if you want to learn more, you should check out their [article about color blindness](#).

Dichromacy



Original Color

201.3080, -7.0538, 22.5319

Protanopia

199.2950, -4.0894, 5.0033

Deuteranopia

200.6990, -6.7536, 19.5580



Tritanopia

202.5560, 0.2189, 23.1914

Trichromacy



Original Color

201.3080, -7.0538, 22.5319

Protanomaly

199.8120, -4.8373, 11.5659

Deuteranomaly

200.9980, -6.9010, 20.1728

Tritanomaly

202.1600, -2.5439, 22.6617

Monochromacy



Original Color

201.3080, -7.0538, 22.5319

Achromatopsia

201.0000, 0.0000, 0.0000

Achromatomaly

200.7730, -2.3531, 8.0921

CSS Examples

Text

The CSS property to change the color of the text to YUV 201.3080, -7.0538, 22.5319 is called "color". The color property can be set on classes, ids or directly on the HTML element.

This example shows how text in the color `rgb(227, 191, 187)` looks like.

```
.text, #text, p{  
    color:rgb(227, 191, 187)  
}
```

If you want to add a text shadow in that color use the text-shadow property, you can generate a text shadow directly with our [CSS Text Shadow Generator](#).

Here you see how black text with a 4 pixel rgb(227, 191, 187) colored shadow looks like.

```
.shadow{ text-shadow: 4px 4px 2px rgb(227, 191, 187) }
```

Border

The CSS property to change the border of an element to YUV 201.3080, -7.0538, 22.5319 is called "border". The border property can be set on classes, ids or directly on the HTML element.

This example shows the color as border, it can be applied via the CSS property "border" or "border-color".

```
.border, #border, table{ border:4px solid rgb(227, 191, 187) }
```


If only the border color should be changed use the property `border-color`.

```
.border{ border-color:rgb(227, 191, 187) }
```

If you want to add a box shadow in that color use:

Here you see how a box with a 4 pixel `rgb(227, 191, 187)` colored shadow looks like.

```
.boxshadow{ -moz-box-shadow:4px 4px 4px 4px rgb(227, 191, 187); -webkit-box-shadow:4px 4px 4px 4px rgb(227, 191, 187); box-shadow:4px 4px 4px 4px rgb(227, 191, 187) }
```

Background

The CSS property to change the background color of an element to YUV 201.3080, -7.0538, 22.5319 is called "background". The background property can be set on classes, ids or directly on the HTML element.

```
.background, #background, body{  
background: rgb(227, 191, 187) }
```

If only the background color should be changed can be used:

```
.background{ background-color: rgb(227,  
191, 187) }
```

This example shows the color as background, it is applied via the CSS property "background".

To optimize and compress your CSS code, you can use our [online CSS compressor and optimizer](#) based on csstidy. If you want to create a linear or radial gradient as background or border, check our [CSS Gradient Generator](#).

Hey! You found this booklet interesting? Support Converting Colors with the new Membership Option!

The pro membership hides all ads, plus gives you double the colors in the color bucket, and more awesome pro features!

[Learn more, Memberships starting at \\$2.50/m!](#)

**Follow me
on Twitter!**

@ConvertingColor