

Converting Colors

YUV(201.4670, -11.5692,
24.1464)

Have a look what the booklet for
YUV(201.4670, -11.5692, 24.1464)
contains.

YUV(201.4670, -11.5692, 24.1464)	3
<i>Conversions</i>	4
<i>Details</i>	6
<i>Harmonies</i>	12
<i>Previews</i>	24
<i>Color Blindness Simulation</i>	28
<i>CSS Examples</i>	31

Color

**YUV(201.4670, -11.5692,
24.1464)**

Conversions

Conversions Part 1

Format	Color
Hex	E5C0B2
RGB	229, 192, 178
RGB Percent	90%, 75%, 70%
CMY	0.1020, 0.2471, 0.3020
CMYK	0.00, 0.16, 0.22, 0.10
HSL	16°, 50%, 80%
HSV	16°, 22%, 90%
XYZ	59.1986, 57.5716, 50.1118
YIQ	201.4670, 26.5460, 3.4900

Conversions

Conversions Part 2

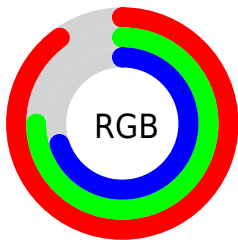
Format	Color
R_{YB}	229, 197, 178
Decimal	15057074
CIE _{Lab}	80.50, 11.05, 11.96
CIE _{LCh}	81, 16.287, 47.271
Yxy	57.5716, 0.3547, 0.3450
Android (android.graphics.Color)	4293247154 (0xFFE5C0B2)
YUV	201.4670, -11.5692, 24.1464
Hunter-Lab	75.8760, 6.4832, 13.9555

Details

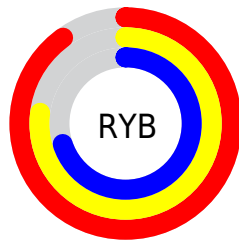
The YUV color $201.4670, -11.5692, 24.1464$ is a light color, and the websafe version is hex FFCCCC . A complement of this color would be $205.5330, 11.5692, -24.1464$, and the grayscale version is $202.0000, 0.0000, 0.0000$.

A 20% lighter version of the original color is $248.4970, -7.1470, 5.7031$, and $147.5700, -11.1270, 22.3021$ is the 20% darker color. If you saturate the color by 10%, you get $188.8660, -16.6959, 35.1975$, and if you desaturate by 10%, it is $214.0680, -6.4425, 13.0954$.

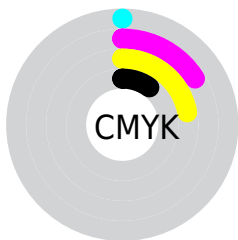
Distribution



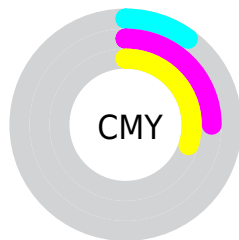
- Red (90%)
- Green (75%)
- Blue (70%)



- Red (90%)
- Yellow (77%)
- Blue (70%)



- Cyan (0%)
- Magenta (16%)
- Yellow (22%)
- Black (10%)



- Cyan (10%)
- Magenta (25%)
- Yellow (30%)

Brightness & Saturation Gradients

These gradients show how the YUV color 201.4670, -11.5692, 24.1464 changes by changing the brightness by 10 percent. The first figure shows a shift by +10% for each color and the second figure -10%.

Similar to the brightness gradients but the following saturation gradients show a change of the YUV color 201.4670, -11.5692, 24.1464 by changing the saturation by 10% instead.

■ 201.4670,
-11.5692, 24.1464

■ 201.4670,
-11.5692, 24.1464

255.0000, 0.0000,
0.0000

■ 174.1680,
-11.4218, 23.5317

■ 248.4970, -7.1470,
5.7031

■ 147.5700,
-11.1270, 22.3021

■ 121.3850,
-10.5428, 21.5874

■ 96.2000, -9.9586,
20.8726

■ 72.4170, -9.0796,
18.9283

■ 49.8190, -8.7848,
17.6987

■ 28.1070, -8.9268,

16.5692

■ 7.4750, -3.6852,
15.3694

■ 0.0000, 0.0000,
0.0000

■ 201.4670,
-11.5692, 24.1464

■ 201.4670,
-11.5692, 24.1464

■ 188.8660,
-16.6959, 35.1975

■ 214.0680, -6.4425,
13.0954

■ 176.8520,
-22.1120, 45.7338

■ 226.0820, -1.0264,
2.5591

■ 164.2510,
-27.2387, 56.7849

■ 238.6830, 4.1003,
-8.4920

■ 152.2370,
-32.6548, 67.3212

■ 247.2260, 3.8326,
-15.9842

■ 139.6360,
-37.7815, 78.3722

■ 127.1490,
-42.4715, 89.3233

■ 115.1350,
-47.8876, 99.8596

■ 105.4520,
-51.9878, 108.3516

Harmonies

Analogous

The Analogous color harmony consists of three colors that are next to each other on the color wheel.



202.0850, -5.4649, 26.2355



201.4670, -11.5692, 24.1464



199.6140, -14.5997, 16.1245

Triad

The Triadic color harmony groups three colors that are evenly spaced from another and form a triangle on the color wheel.



201.4670, -11.5692, 24.1464



194.9280, -0.9505, -21.8619



200.3380, 14.1304, -5.5584

Complementary

The Complementary color scheme is a pair of colors which are on the opposite of each other on the color wheel.



201.4670, -11.5692, 24.1464



205.5330, 11.5692, -24.1464

Split Complementary

Split-complementary colors differ from the complementary color scheme. The scheme consists of three colors, the original color and two neighbors of the complement color.



197.8910, 15.3367, -19.1984



201.4670, -11.5692, 24.1464



194.5340, 6.6387, -29.4093

Square

The Square scheme is like the rectangle color scheme, but the four colors are evenly spaced on the color wheel.



201.4670, -11.5692, 24.1464



196.6430, -8.6980, -10.2109



195.4400, 12.6011, -28.4499



202.0580, 8.8454, 9.5961

Rectangle

The Rectangle color scheme consists of four colors that form a rectangle on the color wheel.



201.4670, -11.5692, 24.1464



198.9720, -14.2832, 7.9176



195.4400, 12.6011, -28.4499



199.8320, 14.8728, -10.3767

Sweetspot

The Sweet Spot groups the original color and five complimentary colors.



201.4670, -11.5692, 24.1464



245.3170, -4.1003, 8.4920



197.4670, 8.6438, 27.6544



122.0500, -2.4896, 5.2182



0.0000, 0.0000, 0.0000



128.0000, 0.0000, 0.0000

Same Dimension

The Same Dimension uses a secret algorithm to generate beautiful new colors.



201.4670, -11.5692, 24.1464



217.7840, -15.6695, 32.6384



216.1420, -18.8040, 11.2765



108.3490, -2.6371, 5.8329



82.2840, -40.5660, 84.8199



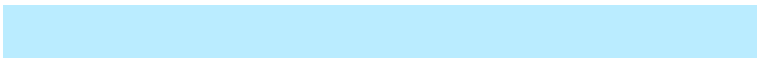
23.4670, -11.5692, 24.1464

Inverse Universe

The Inverse Universe completely reimagines the original color for something new.



205.5330, 11.5692, -24.1464



223.2160, 15.6695, -32.6384



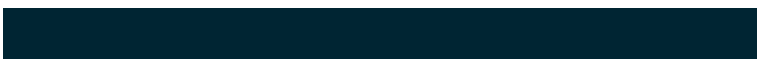
190.8580, 18.8040, -11.2765



109.6510, 2.6371, -5.8329



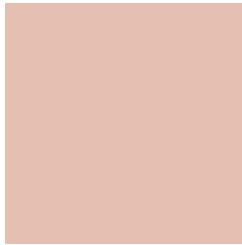
96.7160, 40.5660, -84.8199



27.5330, 11.5692, -24.1464

Previews

White Background



This preview shows how the YUV color 201.4670, -11.5692, 24.1464 looks on a white background.

Color Contrast Check

Large Text (above 18pt) WCAG AA × Fail

Any Text WCAG AA × Fail

Large Text (above 18pt) WCAG AAA × Fail

Any Text WCAG AAA × Fail

Black Background



This preview shows how the YUV color 201.4670, -11.5692, 24.1464 looks on a black background.

Color Contrast Check

Large Text (above 18pt) WCAG AA ✓ Pass

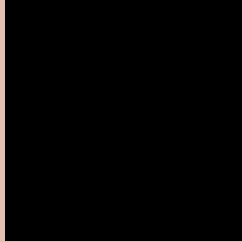
Any Text WCAG AA ✓ Pass

Large Text (above 18pt) WCAG AAA ✓ Pass

Any Text WCAG AAA ✓ Pass

If you want to check with other color combinations, try the [Color Contrast Checker](#).

YUV 201.4670, -11.5692, 24.1464 Background



This preview shows how black text looks on a background with the YUV color 201.4670, -11.5692, 24.1464.



This preview shows how white text looks on a background with the YUV color 201.4670, -11.5692,

Color Blindness Simulation

Color vision deficiency is a very complex topic, and I could not describe the different causes any better than Wikipedia does, so if you want to learn more, you should check out their [article about color blindness](#).

Dichromacy



Original Color

201.4670, -11.5692, 24.1464

Protanopia

199.7530, -8.7522, 7.2326

Deuteranopia

201.4560, -11.5638, 22.4021



Tritanopia

202.8660, 0.0661, 25.5505

Trichromacy



Original Color

201.4670, -11.5692, 24.1464

Protanomaly

200.2700, -9.5001, 13.7952

Deuteranomaly

201.7550, -11.7112, 23.0169

Tritanomaly

202.1280, -4.0071, 25.3207

Monochromacy



Original Color

201.4670, -11.5692, 24.1464

Achromatopsia

201.0000, 0.0000, 0.0000

Achromatomaly

201.3170, -4.1003, 8.4920

CSS Examples

Text

The CSS property to change the color of the text to YUV 201.4670, -11.5692, 24.1464 is called "color". The color property can be set on classes, ids or directly on the HTML element.

This example shows how text in the color `rgb(229, 192, 178)` looks like.

```
.text, #text, p{  
    color:rgb(229, 192, 178)  
}
```

If you want to add a text shadow in that color use the text-shadow property, you can generate a text shadow directly with our [CSS Text Shadow Generator](#).

Here you see how black text with a 4 pixel rgb(229, 192, 178) colored shadow looks like.

```
.shadow{ text-shadow: 4px 4px 2px rgb(229, 192, 178) }
```

Border

The CSS property to change the border of an element to YUV 201.4670, -11.5692, 24.1464 is called "border".

The border property can be set on classes, ids or directly on the HTML element.

This example shows the color as border, it can be applied via the CSS property "border" or "border-color".

```
.border, #border, table{ border:4px solid rgb(229, 192, 178) }
```


If only the border color should be changed use the property `border-color`.

```
.border{ border-color:rgb(229, 192, 178) }
```

If you want to add a box shadow in that color use:

Here you see how a box with a 4 pixel `rgb(229, 192, 178)` colored shadow looks like.

```
.boxshadow{ -moz-box-shadow:4px 4px 4px  
4px rgb(229, 192, 178); -webkit-box-  
shadow:4px 4px 4px 4px rgb(229, 192, 178);  
box-shadow:4px 4px 4px 4px rgb(229, 192,  
178) }
```

Background

The CSS property to change the background color of an element to YUV 201.4670, -11.5692, 24.1464 is called "background". The background property can be set on classes, ids or directly on the HTML element.

```
.background, #background, body{  
background: rgb(229, 192, 178) }
```

If only the background color should be changed can be used:

```
.background{ background-color: rgb(229,  
192, 178) }
```

This example shows the color as background, it is applied via the CSS property "background".

To optimize and compress your CSS code, you can use our [online CSS compressor and optimizer](#) based on csstidy. If you want to create a linear or radial gradient as background or border, check our [CSS Gradient Generator](#).

Hey! You found this booklet interesting? Support Converting Colors with the new Membership Option!

The pro membership hides all ads, plus gives you double the colors in the color bucket, and more awesome pro features!

[Learn more, Memberships starting at \\$2.50/m!](#)

**Follow me
on Twitter!**

@ConvertingColor