

Converting Colors

YUV(201.5440, 1.7038, 13.5549)

Have a look what the booklet for
YUV(201.5440, 1.7038, 13.5549)
contains.

YUV(201.5440, 1.7038, 13.5549)	3
<i>Conversions</i>	4
<i>Details</i>	6
<i>Harmonies</i>	12
<i>Previews</i>	24
<i>Color Blindness Simulation</i>	28
<i>CSS Examples</i>	31

Color

**YUV(201.5440, 1.7038,
13.5549)**

Conversions

Conversions Part 1

Format	Color
Hex	D9C1CD
RGB	217, 193, 205
RGB Percent	85%, 76%, 80%
CMY	0.1490, 0.2431, 0.1961
CMYK	0.00, 0.11, 0.06, 0.15
HSL	330°, 24%, 80%
HSV	330°, 11%, 85%
XYZ	58.7047, 57.2994, 65.7234
YIQ	201.5440, 10.4520, 8.8200

Conversions

Conversions Part 2

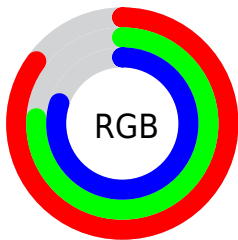
Format	Color
R _Y B	217, 193, 205
Decimal	14270925
CIE Lab	80.35, 10.52, -2.91
CIE LCh	80, 10.912, 344.544
Yxy	57.2994, 0.3230, 0.3153
Android (android.graphics.Color)	4292461005 (0xFFD9C1CD)
YUV	201.5440, 1.7038, 13.5549
Hunter-Lab	75.6964, 5.9631, 1.5089

Details

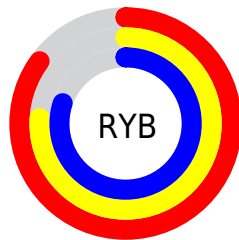
The YUV color **201.5440, 1.7038, 13.5549** is a light color, and the websafe version is hex **CCCCCC**. A complement of this color would be **208.4560, -1.7038, -13.5549**, and the grayscale version is **202.0000, 0.0000, 0.0000**.

A 20% lighter version of the original color is **251.4780, 1.7363, 3.0888**, and **147.2450, 1.8512, 12.9401** is the 20% darker color. If you saturate the color by 10%, you get **187.3760, 3.2656, 25.9802**, and if you desaturate by 10%, it is **215.7120, 0.1420, 1.1296**.

Distribution



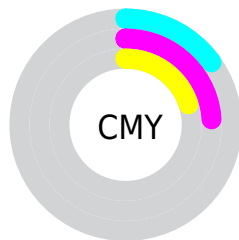
- Red (85%)
- Green (76%)
- Blue (80%)



- Red (85%)
- Yellow (76%)
- Blue (80%)



- Cyan (0%)
- Magenta (11%)
- Yellow (6%)
- Black (15%)



- Cyan (15%)
- Magenta (24%)
- Yellow (20%)

Brightness & Saturation Gradients


These gradients show how the YUV color 201.5440, 1.7038, 13.5549 changes by changing the brightness by 10 percent. The first figure shows a shift by +10% for each color and the second figure -10%.

Similar to the brightness gradients but the following saturation gradients show a change of the YUV color 201.5440, 1.7038, 13.5549 by changing the saturation by 10% instead.


 201.5440, 1.7038,
13.5549

 201.5440, 1.7038,
13.5549


255.0000, 0.0000,
0.0000

 174.2450, 1.8512,
12.9401


 251.4780, 1.7363,
3.0888

 147.2450, 1.8512,
12.9401

 121.8320, 1.5618,
12.4253

 96.5330, 1.7092,
11.8106

 73.1200, 1.4198,
11.2958

 50.5220, 1.7147,
10.0662

 29.1090, 1.4253,

9.5514

■ 7.3050, 0.8356,
12.0105

■ 0.0000, 0.0000,
0.0000

■ 201.5440, 1.7038,
13.5549

■ 201.5440, 1.7038,
13.5549

■ 187.3760, 3.2656,
25.9802

■ 215.7120, 0.1420,
1.1296

■ 173.7950, 4.5381,
37.8908

■ 229.2930, -1.1304,
-10.7810

■ 159.6270, 6.0999,
50.3161

■ 241.7000, -1.8241,
-21.6619

■ 145.5730, 8.0985,
62.6415

■ 242.8400, 2.5439,
-22.6617

■ 131.9920, 9.3709,
74.5520

■ 243.6380, 5.6015,
-23.3615

■ 117.8240, 10.9328,
86.9774

■ 103.6560, 12.4946,
99.4027

■ 89.4880, 14.0564,
111.8280

■ 77.3090, 15.6237,
122.5090

Harmonies

Analogous

The Analogous color harmony consists of three colors that are next to each other on the color wheel.



200.7540, 6.5303, 5.4777



201.5440, 1.7038, 13.5549



201.6000, -3.2538, 17.0138

Triad

The Triadic color harmony groups three colors that are evenly spaced from another and form a triangle on the color wheel.



201.5440, 1.7038, 13.5549



198.6170, -9.1782, 3.8439



196.3550, 8.2060, -18.7283

Complementary

The Complementary color scheme is a pair of colors which are on the opposite of each other on the color wheel.



201.5440, 1.7038, 13.5549



208.4560, -1.7038, -13.5549

Split Complementary

Split-complementary colors differ from the complementary color scheme. The scheme consists of three colors, the original color and two neighbors of the complement color.



195.9160, 3.9854, -18.3433



201.5440, 1.7038, 13.5549



197.3600, -6.0935, -5.5777

Square

The Square scheme is like the rectangle color scheme, but the four colors are evenly spaced on the color wheel.



201.5440, 1.7038, 13.5549



199.8460, -9.7841, 11.5361



196.2710, -1.1196, -14.2697



198.2570, 10.2263, -13.3804

Rectangle

The Rectangle color scheme consists of four colors that form a rectangle on the color wheel.



201.5440, 1.7038, 13.5549



200.8020, -6.3114, 17.7136



196.2710, -1.1196, -14.2697



196.3010, 6.7536, -19.5580

Sweetspot

The Sweet Spot groups the original color and five complimentary colors.



201.5440, 1.7038, 13.5549



249.8480, 0.5679, 4.5183



199.3240, 8.7143, 4.9779



124.1360, 0.4260, 3.3887



0.0000, 0.0000, 0.0000



128.0000, 0.0000, 0.0000

Same Dimension

The Same Dimension uses a secret algorithm to generate beautiful new colors.



201.5440, 1.7038, 13.5549



233.6910, 2.1243, 18.6880



200.1760, -3.5378, 14.7546



102.8590, 0.5625, 6.2627



61.6450, 12.5000, 97.6583



16.3760, 3.2656, 25.9802

Inverse Universe

The Inverse Universe completely reimagines the original color for something new.



201.5440, 1.7038, 13.5549



233.6910, 2.1243, 18.6880



209.8240, 3.5378, -14.7546



102.8590, 0.5625, 6.2627



61.6450, 12.5000, 97.6583



16.3760, 3.2656, 25.9802

Previews

White Background



This preview shows how the YUV color 201.5440, 1.7038, 13.5549 looks on a white background.

Color Contrast Check

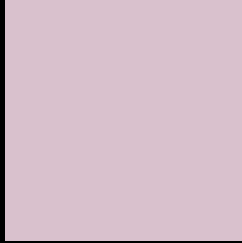
Large Text (above 18pt) WCAG AA × Fail

Any Text WCAG AA × Fail

Large Text (above 18pt) WCAG AAA × Fail

Any Text WCAG AAA × Fail

Black Background



This preview shows how the YUV color 201.5440, 1.7038, 13.5549 looks on a black background.

Color Contrast Check

Large Text (above 18pt) WCAG AA ✓ Pass

Any Text WCAG AA ✓ Pass

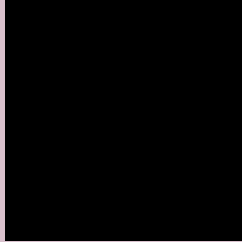
Large Text (above 18pt) WCAG AAA ✓ Pass

Any Text WCAG AAA ✓ Pass

If you want to check with other color combinations, try the [Color Contrast Checker](#).

YUV 201.5440, 1.7038, 13.5549

Background



This preview shows how black text looks on a background with the YUV color 201.5440, 1.7038, 13.5549.



This preview shows how white text looks on a background with the YUV color 201.5440, 1.7038,

Color Blindness Simulation

Color vision deficiency is a very complex topic, and I could not describe the different causes any better than Wikipedia does, so if you want to learn more, you should check out their [article about color blindness](#).

Dichromacy



Original Color

201.5440, 1.7038, 13.5549

Protanopia

199.7380, 4.0732, 0.2298

Deuteranopia

201.2450, 1.8512, 12.9401



Tritanopia

201.8860, 3.0142, 13.2550

Trichromacy



Original Color

201.5440, 1.7038, 13.5549

Protanomaly

200.2440, 3.3307, 5.0480

Deuteranomaly

201.2450, 1.8512, 12.9401

Tritanomaly

201.7720, 2.5774, 13.3550

Monochromacy



Original Color

201.5440, 1.7038, 13.5549

Achromatopsia

202.0000, 0.0000, 0.0000

Achromatomaly

201.8480, 0.5679, 4.5183

CSS Examples

Text

The CSS property to change the color of the text to YUV 201.5440, 1.7038, 13.5549 is called "color". The color property can be set on classes, ids or directly on the HTML element.

This example shows how text in the color `rgb(217, 193, 205)` looks like.

```
.text, #text, p{  
    color:rgb(217, 193, 205)  
}
```

If you want to add a text shadow in that color use the text-shadow property, you can generate a text shadow directly with our [CSS Text Shadow Generator](#).

Here you see how black text with a 4 pixel rgb(217, 193, 205) colored shadow looks like.

```
.shadow{ text-shadow: 4px 4px 2px rgb(217, 193, 205) }
```

Border

The CSS property to change the border of an element to YUV 201.5440, 1.7038, 13.5549 is called "border". The border property can be set on classes, ids or directly on the HTML element.

This example shows the color as border, it can be applied via the CSS property "border" or "border-color".

```
.border, #border, table{ border:4px solid rgb(217, 193, 205) }
```


If only the border color should be changed use the property `border-color`.

```
.border{ border-color:rgb(217, 193, 205) }
```

If you want to add a box shadow in that color use:

Here you see how a box with a 4 pixel `rgb(217, 193, 205)` colored shadow looks like.

```
.boxshadow{ -moz-box-shadow:4px 4px 4px  
4px rgb(217, 193, 205); -webkit-box-  
shadow:4px 4px 4px 4px rgb(217, 193, 205);  
box-shadow:4px 4px 4px 4px rgb(217, 193,  
205) }
```

Background

The CSS property to change the background color of an element to YUV 201.5440, 1.7038, 13.5549 is called "background". The background property can be set on classes, ids or directly on the HTML element.

```
.background, #background, body{  
background: rgb(217, 193, 205) }
```

If only the background color should be changed can be used:

```
.background{ background-color: rgb(217,  
193, 205) }
```

This example shows the color as background, it is applied via the CSS property "background".

To optimize and compress your CSS code, you can use our [online CSS compressor and optimizer](#) based on csstidy. If you want to create a linear or radial gradient as background or border, check our [CSS Gradient Generator](#).

Hey! You found this booklet interesting? Support Converting Colors with the new Membership Option!

The pro membership hides all ads, plus gives you double the colors in the color bucket, and more awesome pro features!

[Learn more, Memberships starting at \\$2.50/m!](#)

**Follow me
on Twitter!**

@ConvertingColor