

Converting Colors

YUV(201.6560, -8.2114,
20.4727)

Have a look what the booklet for
YUV(201.6560, -8.2114, 20.4727)
contains.

YUV(201.6560, -8.2114, 20.4727)	3
<i>Conversions</i>	4
<i>Details</i>	6
<i>Harmonies</i>	12
<i>Previews</i>	24
<i>Color Blindness Simulation</i>	28
<i>CSS Examples</i>	31

Color

**YUV(201.6560, -8.2114,
20.4727)**

Conversions

Conversions Part 1

Format	Color
Hex	E1C1B9
RGB	225, 193, 185
RGB Percent	88%, 76%, 73%
CMY	0.1176, 0.2431, 0.2745
CMYK	0.00, 0.14, 0.18, 0.12
HSL	12°, 40%, 80%
HSV	12°, 18%, 88%
XYZ	58.8783, 57.6503, 53.9233
YIQ	201.6560, 21.6400, 4.2960

Conversions

Conversions Part 2

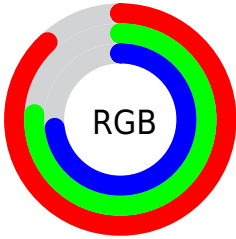
Format	Color
R _Y B	225, 195, 185
Decimal	14795193
CIE Lab	80.54, 10.09, 8.22
CIE LCh	81, 13.015, 39.168
Yxy	57.6503, 0.3454, 0.3382
Android (android.graphics.Color)	4292985273 (0xFFE1C1B9)
YUV	201.6560, -8.2114, 20.4727
Hunter-Lab	75.9278, 5.5444, 11.0421

Details

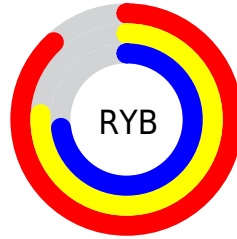
The YUV color $201.6560, -8.2114, 20.4727$ is a light color, and the websafe version is hex FFCCCC . A complement of this color would be $208.3440, 8.2114, -20.4727$, and the grayscale version is $202.0000, 0.0000, 0.0000$.

A 20% lighter version of the original color is $249.8820, -4.3788, 4.4885$, and $147.1720, -7.4798, 19.1432$ is the 20% darker color. If you saturate the color by 10%, you get $188.5820, -12.6119, 31.9386$, and if you desaturate by 10%, it is $214.8440, -3.3741, 8.9068$.

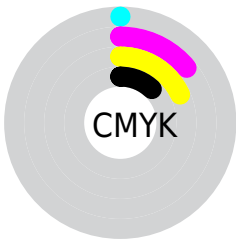
Distribution



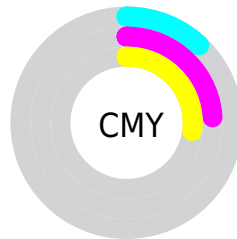
- Red (88%)
- Green (76%)
- Blue (73%)



- Red (88%)
- Yellow (76%)
- Blue (73%)



- Cyan (0%)
- Magenta (14%)
- Yellow (18%)
- Black (12%)



- Cyan (12%)
- Magenta (24%)
- Yellow (27%)

Brightness & Saturation Gradients

These gradients show how the YUV color 201.6560, -8.2114, 20.4727 changes by changing the brightness by 10 percent. The first figure shows a shift by +10% for each color and the second figure -10%.


Similar to the brightness gradients but the following saturation gradients show a change of the YUV color 201.6560, -8.2114, 20.4727 by changing the saturation by 10% instead.


 201.6560, -8.2114,
20.4727

 201.6560, -8.2114,
20.4727


255.0000, 0.0000,
0.0000


 174.3570, -8.0640,
19.8579


 249.8820, -4.3788,
4.4885

 147.1720, -7.4798,
19.1432

 121.8730, -7.3324,
18.5284

 96.6880, -6.7482,
17.8136

 73.0900, -6.4534,
16.5841

 50.1930, -6.0111,
14.7397

 28.5950, -5.7163,

13.5102

■ 7.1760, -3.5378,
14.7546

■ 0.0000, 0.0000,
0.0000

■ 201.6560, -8.2114,
20.4727

■ 201.6560, -8.2114,
20.4727

■ 188.5820,
-12.6119, 31.9386

■ 214.8440, -3.3741,
8.9068

■ 175.3940,
-17.4492, 43.5045

■ 227.9180, 1.0264,
-2.5591

■ 162.2060,
-22.2866, 55.0703

■ 241.1060, 5.8637,
-14.1250

■ 149.1320,
-26.6871, 66.5362

■ 246.0300, 4.4222,
-18.4433

■ 136.0580,
-31.0876, 78.0021

■ 122.8700,
-35.9249, 89.5680

■ 109.7960,
-40.3254, 101.0339

■ 96.6080, -45.1627,
112.5998

■ 93.6900, -46.1892,
115.1589

Harmonies

Analogous

The Analogous color harmony consists of three colors that are next to each other on the color wheel.



202.6220, -3.2646, 20.5025



201.6560, -8.2114, 20.4727



200.4120, -11.5421, 15.4247

Triad

The Triadic color harmony groups three colors that are evenly spaced from another and form a triangle on the color wheel.



201.6560, -8.2114, 20.4727



196.2170, -2.5720, -15.0993



200.3440, 11.6624, -7.3177

Complementary

The Complementary color scheme is a pair of colors which are on the opposite of each other on the color wheel.



201.6560, -8.2114, 20.4727



208.3440, 8.2114, -20.4727

Split Complementary

Split-complementary colors differ from the complementary color scheme. The scheme consists of three colors, the original color and two neighbors of the complement color.



197.6910, 11.9843, -17.2690



201.6560, -8.2114, 20.4727



195.7800, 3.5595, -21.7321

Square

The Square scheme is like the rectangle color scheme, but the four colors are evenly spaced on the color wheel.



201.6560, -8.2114, 20.4727



197.7900, -8.2775, -5.0778



196.2620, 9.2378, -23.0318



201.9110, 8.4249, 4.4631

Rectangle

The Rectangle color scheme consists of four colors that form a rectangle on the color wheel.



201.6560, -8.2114, 20.4727



199.6670, -11.6678, 9.0620



196.2620, 9.2378, -23.0318



199.4360, 12.1101, -10.9064

Sweetspot

The Sweet Spot groups the original color and five complimentary colors.



201.6560, -8.2114, 20.4727



247.6480, -2.7845, 6.4477



200.6080, 8.0813, 21.3918



122.9790, -1.4686, 4.4034



0.0000, 0.0000, 0.0000



128.0000, 0.0000, 0.0000

Same Dimension

The Same Dimension uses a secret algorithm to generate beautiful new colors.



201.6560, -8.2114, 20.4727



223.6030, -11.1433, 27.5352



213.3960, -13.9992, 10.1767



105.4630, -2.2003, 5.7329



73.1690, -36.0723, 90.1828



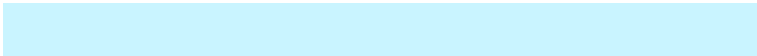
20.2220, -9.9694, 24.3613

Inverse Universe

The Inverse Universe completely reimagines the original color for something new.



208.3440, 8.2114, -20.4727



232.3970, 11.1433, -27.5352



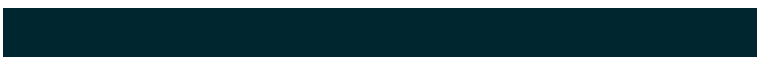
196.6040, 13.9992, -10.1767



107.5370, 2.2003, -5.7329



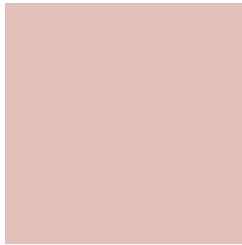
102.8310, 36.0723, -90.1828



28.3650, 9.6801, -24.8761

Previews

White Background



This preview shows how the YUV color 201.6560, -8.2114, 20.4727 looks on a white background.

Color Contrast Check

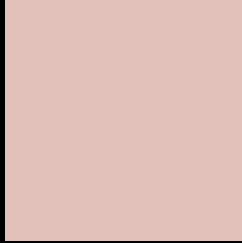
Large Text (above 18pt) WCAG AA × Fail

Any Text WCAG AA × Fail

Large Text (above 18pt) WCAG AAA × Fail

Any Text WCAG AAA × Fail

Black Background



This preview shows how the YUV color 201.6560, -8.2114, 20.4727 looks on a black background.

Color Contrast Check

Large Text (above 18pt) WCAG AA ✓ Pass

Any Text WCAG AA ✓ Pass

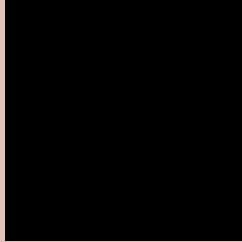
Large Text (above 18pt) WCAG AAA ✓ Pass

Any Text WCAG AAA ✓ Pass

If you want to check with other color combinations, try the [Color Contrast Checker](#).

YUV 201.6560, -8.2114, 20.4727

Background



This preview shows how black text looks on a background with the YUV color 201.6560, -8.2114, 20.4727.

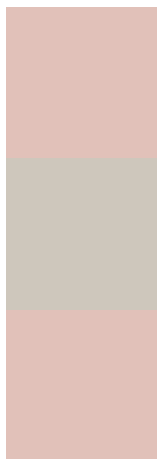


This preview shows how white text looks on a background with the YUV color 201.6560, -8.2114,

Color Blindness Simulation

Color vision deficiency is a very complex topic, and I could not describe the different causes any better than Wikipedia does, so if you want to learn more, you should check out their [article about color blindness](#).

Dichromacy



Original Color

201.6560, -8.2114, 20.4727

Protanopia

199.8390, -5.8366, 5.4032

Deuteranopia

201.6560, -8.2114, 20.4727



Tritanopia

202.7730, 1.0979, 21.2471

Trichromacy



Original Color

201.6560, -8.2114, 20.4727

Protanomaly

200.6440, -6.7265, 10.8362

Deuteranomaly

201.6560, -8.2114, 20.4727

Tritanomaly

202.2630, -2.1017, 20.8173

Monochromacy



Original Color

201.6560, -8.2114, 20.4727

Achromatopsia

202.0000, 0.0000, 0.0000

Achromatomaly

201.9470, -2.9319, 7.0625

CSS Examples

Text

The CSS property to change the color of the text to YUV 201.6560, -8.2114, 20.4727 is called "color". The color property can be set on classes, ids or directly on the HTML element.

This example shows how text in the color `rgb(225, 193, 185)` looks like.

```
.text, #text, p{  
    color:rgb(225, 193, 185)  
}
```

If you want to add a text shadow in that color use the text-shadow property, you can generate a text shadow directly with our [CSS Text Shadow Generator](#).

Here you see how black text with a 4 pixel rgb(225, 193, 185) colored shadow looks like.

```
.shadow{ text-shadow: 4px 4px 2px rgb(225, 193, 185) }
```

Border

The CSS property to change the border of an element to YUV 201.6560, -8.2114, 20.4727 is called "border". The border property can be set on classes, ids or directly on the HTML element.

This example shows the color as border, it can be applied via the CSS property "border" or "border-color".

```
.border, #border, table{ border:4px solid rgb(225, 193, 185) }
```


If only the border color should be changed use the property `border-color`.

```
.border{ border-color:rgb(225, 193, 185) }
```

If you want to add a box shadow in that color use:

Here you see how a box with a 4 pixel `rgb(225, 193, 185)` colored shadow looks like.

```
.boxshadow{ -moz-box-shadow:4px 4px 4px 4px rgb(225, 193, 185); -webkit-box-shadow:4px 4px 4px 4px rgb(225, 193, 185); box-shadow:4px 4px 4px 4px rgb(225, 193, 185) }
```

Background

The CSS property to change the background color of an element to YUV 201.6560, -8.2114, 20.4727 is called "background". The background property can be set on classes, ids or directly on the HTML element.

```
.background, #background, body{  
background: rgb(225, 193, 185) }
```

If only the background color should be changed can be used:

```
.background{ background-color: rgb(225,  
193, 185) }
```

This example shows the color as background, it is applied via the CSS property "background".

To optimize and compress your CSS code, you can use our [online CSS compressor and optimizer](#) based on csstidy. If you want to create a linear or radial gradient as background or border, check our [CSS Gradient Generator](#).

Hey! You found this booklet interesting? Support Converting Colors with the new Membership Option!

The pro membership hides all ads, plus gives you double the colors in the color bucket, and more awesome pro features!

[Learn more, Memberships starting at \\$2.50/m!](#)

**Follow me
on Twitter!**

@ConvertingColor