

Converting Colors

YUV(201.9240, -14.7525,
18.4837)

Have a look what the booklet for
YUV(201.9240, -14.7525, 18.4837)
contains.

YUV(201.9240, -14.7525, 18.4837)	3
<i>Conversions</i>	4
<i>Details</i>	6
<i>Harmonies</i>	12
<i>Previews</i>	24
<i>Color Blindness Simulation</i>	28
<i>CSS Examples</i>	31

Color

**YUV(201.9240, -14.7525,
18.4837)**

Conversions

Conversions Part 1

Format	Color
Hex	DFC5AC
RGB	223, 197, 172
RGB Percent	87%, 77%, 67%
CMY	0.1255, 0.2275, 0.3255
CMYK	0.00, 0.12, 0.23, 0.13
HSL	29°, 44%, 77%
HSV	29°, 23%, 87%
XYZ	57.8441, 58.5990, 47.2918
YIQ	201.9240, 23.5210, -2.2630

Conversions

Conversions Part 2

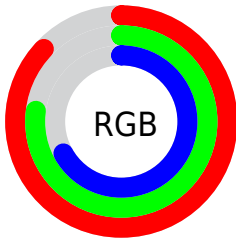
Format	Color
RYB	223, 221, 172
Decimal	14665132
CIELab	81.07, 5.31, 15.90
CIElCh	81, 16.764, 71.534
Yxy	58.5990, 0.3533, 0.3579
Android (android.graphics.Color)	4292855212 (0xFFDFC5AC)
YUV	201.9240, -14.7525, 18.4837
Hunter-Lab	76.5500, 0.9188, 16.9563

Details

The YUV color $201.9240, -14.7525, 18.4837$ is a light color, and the websafe version is hex FFCCCC . A complement of this color would be $193.0760, 14.7525, -18.4837$, and the grayscale version is $202.0000, 0.0000, 0.0000$.

A 20% lighter version of the original color is $251.2210, -11.9410, 3.3142$, and $147.5540, -13.5841, 17.0541$ is the 20% darker color. If you saturate the color by 10%, you get $192.9590, -21.1788, 26.3460$, and if you desaturate by 10%, it is $210.8890, -8.3263, 10.6213$.

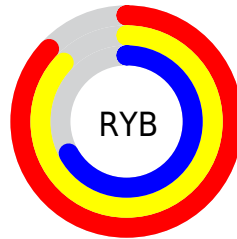
Distribution



Red (87%)

Green (77%)

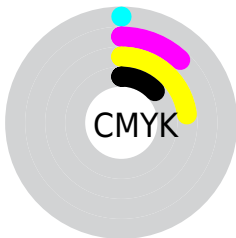
Blue (67%)



Red (87%)

Yellow (87%)

Blue (67%)

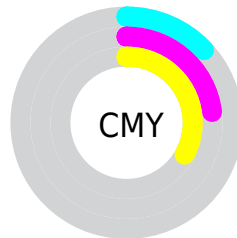


Cyan (0%)

Magenta (12%)

Yellow (23%)

Black (13%)



Cyan (13%)

Magenta (23%)

Yellow (33%)

Brightness & Saturation Gradients

These gradients show how the YUV color 201.9240, -14.7525, 18.4837 changes by changing the brightness by 10 percent. The first figure shows a shift by +10% for each color and the second figure -10%.

Similar to the brightness gradients but the following saturation gradients show a change of the YUV color 201.9240, -14.7525, 18.4837 by changing the saturation by 10% instead.

■ 201.9240,
-14.7525, 18.4837

■ 201.9240,
-14.7525, 18.4837

255.0000, 0.0000,
0.0000

■ 174.6250,
-14.6051, 17.8689

■ 251.2210,
-11.9410, 3.3142

■ 147.5540,
-13.5841, 17.0541

■ 122.2550,
-13.4367, 16.4394

■ 97.0700, -12.8525,
15.7246

■ 73.2870, -11.9735,
13.7803

■ 50.1020, -11.3893,
13.0655

■ 28.3470, -12.9891,

12.8507

■ 5.3820, -2.6533,
11.0660

■ 0.0000, 0.0000,
0.0000

■ 201.9240,
-14.7525, 18.4837

■ 201.9240,
-14.7525, 18.4837

■ 192.9590,
-21.1788, 26.3460

■ 210.8890, -8.3263,
10.6213

■ 183.2930,
-27.7524, 34.8230

■ 220.5550, -1.7526,
2.1443

■ 174.3280,
-34.1787, 42.6853

■ 229.5200, 4.6736,
-5.7180

■ 165.3630,
-40.6050, 50.5476

■ 237.8010, 8.4791,
-12.9805

■ 155.8110,
-46.7418, 58.9248

■ 244.8450, 5.0064,
-19.1581

■ 146.7320,
-53.6049, 66.8870

■ 245.4320, 4.7170,
-19.6729

■ 137.1800,
-59.7417, 75.2641

■ 130.6600,
-64.4154, 80.9822

Harmonies

Analogous

The Analogous color harmony consists of three colors that are next to each other on the color wheel.



203.5920, -11.1379, 25.7908



201.9240, -14.7525, 18.4837



200.2600, -14.4252, 6.7880

Triad

The Triadic color harmony groups three colors that are evenly spaced from another and form a triangle on the color wheel.



201.9240, -14.7525, 18.4837



195.8930, 5.4758, -29.7242



203.5030, 10.5980, 7.4519

Complementary

The Complementary color scheme is a pair of colors which are on the opposite of each other on the color wheel.



201.9240, -14.7525, 18.4837



193.0760, 14.7525, -18.4837

Split Complementary

Split-complementary colors differ from the complementary color scheme. The scheme consists of three colors, the original color and two neighbors of the complement color.



201.8430, 14.8674, -8.6323



201.9240, -14.7525, 18.4837



196.3150, 12.1697, -30.0943

Square

The Square scheme is like the rectangle color scheme, but the four colors are evenly spaced on the color wheel.



201.9240, -14.7525, 18.4837



196.7710, -2.8451, -20.8472



198.9830, 15.7844, -22.7871



204.7450, 3.5767, 19.5176

Rectangle

The Rectangle color scheme consists of four colors that form a rectangle on the color wheel.



201.9240, -14.7525, 18.4837



198.7750, -12.2141, -2.4337



198.9830, 15.7844, -22.7871



202.9260, 12.3615, 1.8189

Sweetspot

The Sweet Spot groups the original color and five complimentary colors.



201.9240, -14.7525, 18.4837



247.6650, -5.2578, 6.4328



190.2130, 3.8390, 28.7542



123.2240, -3.0684, 4.1886



0.0000, 0.0000, 0.0000



128.0000, 0.0000, 0.0000

Same Dimension

The Same Dimension uses a secret algorithm to generate beautiful new colors.



201.9240, -14.7525, 18.4837



226.5890, -20.0104, 24.9164



216.5990, -21.9873, 5.6137



107.2240, -3.0684, 4.1886



103.1060, -50.8313, 63.9280



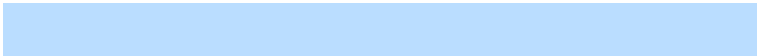
28.4400, -14.0209, 17.1541

Inverse Universe

The Inverse Universe completely reimagines the original color for something new.



193.0760, 14.7525, -18.4837



214.4110, 20.0104, -24.9164



178.4010, 21.9873, -5.6137



105.7760, 3.0684, -4.1886



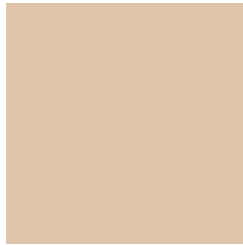
72.8940, 50.8313, -63.9280



20.1470, 13.7315, -17.6689

Previews

White Background



This preview shows how the YUV color 201.9240, -14.7525, 18.4837 looks on a white background.

Color Contrast Check

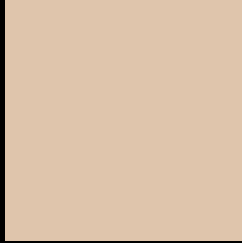
Large Text (above 18pt) WCAG AA × Fail

Any Text WCAG AA × Fail

Large Text (above 18pt) WCAG AAA × Fail

Any Text WCAG AAA × Fail

Black Background



This preview shows how the YUV color 201.9240, -14.7525, 18.4837 looks on a black background.

Color Contrast Check

Large Text (above 18pt) WCAG AA ✓ Pass

Any Text WCAG AA ✓ Pass

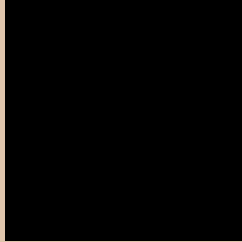
Large Text (above 18pt) WCAG AAA ✓ Pass

Any Text WCAG AAA ✓ Pass

If you want to check with other color combinations, try the [Color Contrast Checker](#).

YUV 201.9240, -14.7525, 18.4837

Background



This preview shows how black text looks on a background with the YUV color 201.9240, -14.7525, 18.4837.



This preview shows how white text looks on a background with the YUV color 201.9240, -14.7525, 18.4837.

Color Blindness Simulation

Color vision deficiency is a very complex topic, and I could not describe the different causes any better than Wikipedia does, so if you want to learn more, you should check out their [article about color blindness](#).

Dichromacy



Original Color

201.9240, -14.7525, 18.4837

Protanopia

200.9120, -13.2676, 8.8472

Deuteranopia

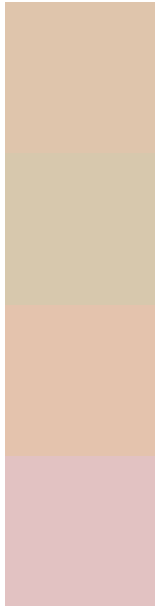
202.6690, -14.6268, 24.8463



Tritanopia

204.1750, 1.3927, 20.0175

Trichromacy



Original Color

201.9240, -14.7525, 18.4837

Protanomaly

201.4070, -14.0047, 11.9211

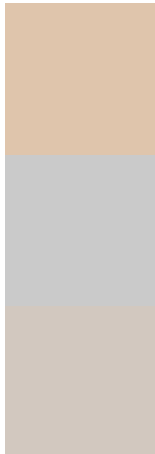
Deuteranomaly

202.3590, -14.4740, 22.4872

Tritanomaly

203.5680, -4.7170, 19.6729

Monochromacy



Original Color

201.9240, -14.7525, 18.4837

Achromatopsia

202.0000, 0.0000, 0.0000

Achromatomaly

201.9640, -5.4053, 7.0476

CSS Examples

Text

The CSS property to change the color of the text to YUV 201.9240, -14.7525, 18.4837 is called "color". The color property can be set on classes, ids or directly on the HTML element.

This example shows how text in the color `rgb(223, 197, 172)` looks like.

```
.text, #text, p{  
    color:rgb(223, 197, 172)  
}
```

If you want to add a text shadow in that color use the text-shadow property, you can generate a text shadow directly with our [CSS Text Shadow Generator](#).

Here you see how black text with a 4 pixel rgb(223, 197, 172) colored shadow looks like.

```
.shadow{ text-shadow: 4px 4px 2px rgb(223, 197, 172) }
```

Border

The CSS property to change the border of an element to YUV 201.9240, -14.7525, 18.4837 is called "border".

The border property can be set on classes, ids or directly on the HTML element.

This example shows the color as border, it can be applied via the CSS property "border" or "border-color".

```
.border, #border, table{ border:4px solid rgb(223, 197, 172) }
```


If only the border color should be changed use the property border-color.

```
.border{ border-color:rgb(223, 197, 172) }
```

If you want to add a box shadow in that color use:

Here you see how a box with a 4 pixel rgb(223, 197, 172) colored shadow looks like.

```
.boxshadow{ -moz-box-shadow:4px 4px 4px  
4px rgb(223, 197, 172); -webkit-box-  
shadow:4px 4px 4px 4px rgb(223, 197, 172);  
box-shadow:4px 4px 4px 4px rgb(223, 197,  
172) }
```

Background

The CSS property to change the background color of an element to YUV 201.9240, -14.7525, 18.4837 is called "background". The background property can be set on classes, ids or directly on the HTML element.

```
.background, #background, body{  
background: rgb(223, 197, 172) }
```

If only the background color should be changed can be used:

```
.background{ background-color: rgb(223,  
197, 172) }
```

This example shows the color as background, it is applied via the CSS property "background".

To optimize and compress your CSS code, you can use our [online CSS compressor and optimizer](#) based on csstidy. If you want to create a linear or radial gradient as background or border, check our [CSS Gradient Generator](#).

Hey! You found this booklet interesting? Support Converting Colors with the new Membership Option!

The pro membership hides all ads, plus gives you double the colors in the color bucket, and more awesome pro features!

[Learn more, Memberships starting at \\$2.50/m!](#)

**Follow me
on Twitter!**

@ConvertingColor