

Converting Colors

YUV(202.3990, -1.6757,
24.2061)

Have a look what the booklet for
YUV(202.3990, -1.6757, 24.2061)
contains.

YUV(202.3990, -1.6757, 24.2061)	3
<i>Conversions</i>	4
<i>Details</i>	6
<i>Harmonies</i>	12
<i>Previews</i>	24
<i>Color Blindness Simulation</i>	28
<i>CSS Examples</i>	31

Color

**YUV(202.3990, -1.6757,
24.2061)**

Conversions

Conversions Part 1

Format	Color
Hex	E6BDC7
RGB	230, 189, 199
RGB Percent	90%, 74%, 78%
CMY	0.0980, 0.2588, 0.2196
CMYK	0.00, 0.18, 0.13, 0.10
HSL	345°, 45%, 82%
HSV	345°, 18%, 90%
XYZ	61.1395, 57.3417, 61.8785
YIQ	202.3990, 21.2260, 11.8020

Conversions

Conversions Part 2

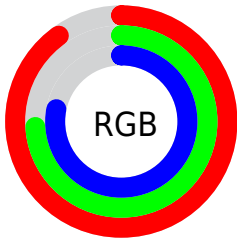
Format	Color
R _Y B	230, 189, 199
Decimal	15121863
CIE Lab	80.37, 16.22, 0.50
CIE LCh	80, 16.230, 1.749
Yxy	57.3417, 0.3390, 0.3179
Android (android.graphics.Color)	4293311943 (0xFFE6BDC7)
YUV	202.3990, -1.6757, 24.2061
Hunter-Lab	75.7243, 11.6027, 4.5579

Details

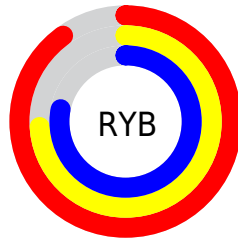
The YUV color $202.3990, -1.6757, 24.2061$ is a light color, and the websafe version is hex `FFCCCC`. A complement of this color would be $216.6010, 1.6757, -24.2061$, and the grayscale version is $202.0000, 0.0000, 0.0000$.

A 20% lighter version of the original color is $249.1300, 2.8939, 5.1480$, and $148.3880, -1.6703, 22.4617$ is the 20% darker color. If you saturate the color by 10%, you get $186.9600, -2.4453, 37.7461$, and if you desaturate by 10%, it is $217.8380, -0.9061, 10.6661$.

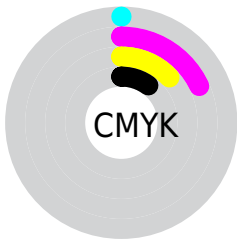
Distribution



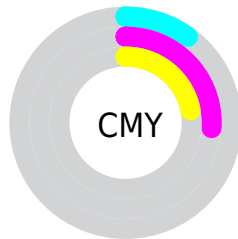
- Red (90%)
- Green (74%)
- Blue (78%)



- Red (90%)
- Yellow (74%)
- Blue (78%)



- Cyan (0%)
- Magenta (18%)
- Yellow (13%)
- Black (10%)




- Cyan (10%)
- Magenta (26%)
- Yellow (22%)

Brightness & Saturation Gradients


These gradients show how the YUV color 202.3990, -1.6757, 24.2061 changes by changing the brightness by 10 percent. The first figure shows a shift by +10% for each color and the second figure -10%.


Similar to the brightness gradients but the following saturation gradients show a change of the YUV color 202.3990, -1.6757, 24.2061 by changing the saturation by 10% instead.

 202.3990, -1.6757,
24.2061


 202.3990, -1.6757,
24.2061


255.0000, 0.0000,
0.0000


 175.1000, -1.5283,
23.5913


 249.1300, 2.8939,
5.1480

 148.3880, -1.6703,
22.4617

 122.2030, -1.0861,
21.7470

 97.4910, -1.2281,
20.6174

 73.1920, -1.0807,
20.0026

 50.2950, -0.6384,
18.1583

 28.6970, -0.3436,

16.9287

■ 9.3830, -4.1328,
18.9581

■ 0.0000, 0.0000,
0.0000

■ 202.3990, -1.6757,
24.2061

■ 202.3990, -1.6757,
24.2061

■ 186.9600, -2.4453,
37.7461

■ 217.8380, -0.9061,
10.6661

■ 171.4070, -3.6517,
51.3861

■ 233.3910, 0.3002,
-2.9739

■ 155.9680, -4.4212,
64.9261

■ 247.0690, 1.9380,
-14.9695

■ 140.4150, -5.6276,
78.5660

■ 247.5250, 3.6852,
-15.3694

■ 124.9760, -6.3972,
92.1060

■ 109.5370, -7.1667,
105.6461

■ 93.9840, -8.3731,
119.2860

■ 78.5450, -9.1427,
132.8260

■ 75.1540, -9.4429,
135.7999

Harmonies

Analogous

The Analogous color harmony consists of three colors that are next to each other on the color wheel.



202.2930, 5.7716, 15.5290



202.3990, -1.6757, 24.2061



201.5750, -8.6645, 25.8057

Triad

The Triadic color harmony groups three colors that are evenly spaced from another and form a triangle on the color wheel.



202.3990, -1.6757, 24.2061



196.8890, -11.7773, -2.5337



196.3310, 14.6268, -24.8463

Complementary

The Complementary color scheme is a pair of colors which are on the opposite of each other on the color wheel.



202.3990, -1.6757, 24.2061



216.6010, 1.6757, -24.2061

Split Complementary

Split-complementary colors differ from the complementary color scheme. The scheme consists of three colors, the original color and two neighbors of the complement color.



194.4460, 10.1331, -30.2091



202.3990, -1.6757, 24.2061



195.5220, -5.1873, -16.2438

Square

The Square scheme is like the rectangle color scheme, but the four colors are evenly spaced on the color wheel.



202.3990, -1.6757, 24.2061



199.1680, -14.8728, 10.3767



193.9320, 2.9915, -26.2504



198.5220, 15.0257, -12.7358

Rectangle

The Rectangle color scheme consists of four colors that form a rectangle on the color wheel.



202.3990, -1.6757, 24.2061



200.6410, -12.1480, 23.1168



193.9320, 2.9915, -26.2504



195.3800, 13.6167, -27.5203

Sweetspot

The Sweet Spot groups the original color and five complimentary colors.



202.3990, -1.6757, 24.2061



246.2290, -0.6059, 7.6922



202.9430, 13.3391, 14.9590



122.6200, -0.3057, 4.7183



0.0000, 0.0000, 0.0000



128.0000, 0.0000, 0.0000

Same Dimension

The Same Dimension uses a secret algorithm to generate beautiful new colors.



202.3990, -1.6757, 24.2061



218.7420, -1.8448, 31.7983



207.1290, -8.9376, 20.0579



106.9300, -0.4585, 7.0774



58.5370, -7.1667, 105.6461



16.6170, -2.2762, 30.1539

Inverse Universe

The Inverse Universe completely reimagines the original color for something new.



202.3990, -1.6757, 24.2061



218.7420, -1.8448, 31.7983



211.8710, 8.9376, -20.0579



106.9300, -0.4585, 7.0774



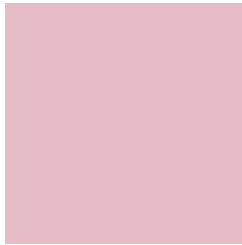
58.5370, -7.1667, 105.6461



16.6170, -2.2762, 30.1539

Previews

White Background



This preview shows how the YUV color 202.3990, -1.6757, 24.2061 looks on a white background.

Color Contrast Check

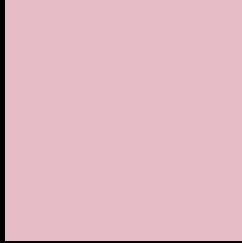
Large Text (above 18pt) WCAG AA × Fail

Any Text WCAG AA × Fail

Large Text (above 18pt) WCAG AAA × Fail

Any Text WCAG AAA × Fail

Black Background



This preview shows how the YUV color 202.3990, -1.6757, 24.2061 looks on a black background.

Color Contrast Check

Large Text (above 18pt) WCAG AA ✓ Pass

Any Text WCAG AA ✓ Pass

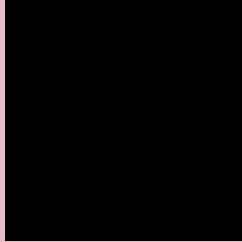
Large Text (above 18pt) WCAG AAA ✓ Pass

Any Text WCAG AAA ✓ Pass

If you want to check with other color combinations, try the [Color Contrast Checker](#).

YUV 202.3990, -1.6757, 24.2061

Background



This preview shows how black text looks on a background with the YUV color 202.3990, -1.6757, 24.2061.



This preview shows how white text looks on a background with the YUV color 202.3990, -1.6757,

Color Blindness Simulation

Color vision deficiency is a very complex topic, and I could not describe the different causes any better than Wikipedia does, so if you want to learn more, you should check out their [article about color blindness](#).

Dichromacy



Original Color

202.3990, -1.6757, 24.2061

Protanopia

200.5810, 2.1786, 1.2445

Deuteranopia

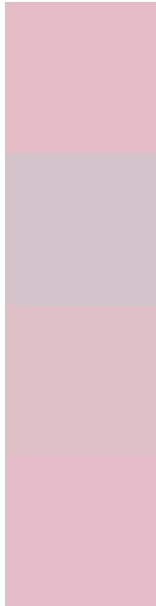
201.3440, -1.6486, 15.4843



Tritanopia

202.5670, 0.2135, 24.9357

Trichromacy



Original Color

202.3990, -1.6757, 24.2061

Protanomaly

200.9950, 0.9885, 9.6514

Deuteranomaly

201.9530, -1.9488, 18.4582

Tritanomaly

202.4530, -0.2233, 25.0357

Monochromacy



Original Color

202.3990, -1.6757, 24.2061

Achromatopsia

202.0000, 0.0000, 0.0000

Achromatomaly

201.9410, -0.4639, 8.8217

CSS Examples

Text

The CSS property to change the color of the text to YUV 202.3990, -1.6757, 24.2061 is called "color". The color property can be set on classes, ids or directly on the HTML element.

This example shows how text in the color `rgb(230, 189, 199)` looks like.

```
.text, #text, p{  
    color:rgb(230, 189, 199)  
}
```

If you want to add a text shadow in that color use the text-shadow property, you can generate a text shadow directly with our [CSS Text Shadow Generator](#).

Here you see how black text with a 4 pixel rgb(230, 189, 199) colored shadow looks like.

```
.shadow{ text-shadow: 4px 4px 2px rgb(230, 189, 199) }
```

Border

The CSS property to change the border of an element to YUV 202.3990, -1.6757, 24.2061 is called "border". The border property can be set on classes, ids or directly on the HTML element.

This example shows the color as border, it can be applied via the CSS property "border" or "border-color".

```
.border, #border, table{ border:4px solid rgb(230, 189, 199) }
```


If only the border color should be changed use the property `border-color`.

```
.border{ border-color:rgb(230, 189, 199) }
```

If you want to add a box shadow in that color use:

Here you see how a box with a 4 pixel `rgb(230, 189, 199)` colored shadow looks like.

```
.boxshadow{ -moz-box-shadow:4px 4px 4px  
4px rgb(230, 189, 199); -webkit-box-  
shadow:4px 4px 4px 4px rgb(230, 189, 199);  
box-shadow:4px 4px 4px 4px rgb(230, 189,  
199) }
```

Background

The CSS property to change the background color of an element to YUV 202.3990, -1.6757, 24.2061 is called "background". The background property can be set on classes, ids or directly on the HTML element.

```
.background, #background, body{  
background: rgb(230, 189, 199) }
```

If only the background color should be changed can be used:

```
.background{ background-color: rgb(230,  
189, 199) }
```

This example shows the color as background, it is applied via the CSS property "background".

To optimize and compress your CSS code, you can use our [online CSS compressor and optimizer](#) based on csstidy. If you want to create a linear or radial gradient as background or border, check our [CSS Gradient Generator](#).

Hey! You found this booklet interesting? Support Converting Colors with the new Membership Option!

The pro membership hides all ads, plus gives you double the colors in the color bucket, and more awesome pro features!

[Learn more, Memberships starting at \\$2.50/m!](#)

**Follow me
on Twitter!**

@ConvertingColor