

Converting Colors

YUV(202.8840, -7.3378,
20.2727)

Have a look what the booklet for
YUV(202.8840, -7.3378, 20.2727)
contains.

YUV(202.8840, -7.3378, 20.2727)	3
<i>Conversions</i>	4
<i>Details</i>	6
<i>Harmonies</i>	12
<i>Previews</i>	24
<i>Color Blindness Simulation</i>	28
<i>CSS Examples</i>	31

Color

**YUV(202.8840, -7.3378,
20.2727)**

Conversions

Conversions Part 1

Format	Color
Hex	E2C2BC
RGB	226, 194, 188
RGB Percent	89%, 76%, 74%
CMY	0.1137, 0.2392, 0.2627
CMYK	0.00, 0.14, 0.17, 0.11
HSL	9°, 40%, 81%
HSV	9°, 17%, 89%
XYZ	59.7329, 58.3832, 55.6978
YIQ	202.8840, 20.9980, 4.9180

Conversions

Conversions Part 2

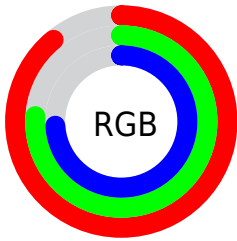
Format	Color
R _Y B	226, 195, 188
Decimal	14860988
CIE Lab	80.95, 10.39, 7.21
CIE LCh	81, 12.642, 34.750
Yxy	58.3832, 0.3437, 0.3359
Android (android.graphics.Color)	4293051068 (0xFFE2C2BC)
YUV	202.8840, -7.3378, 20.2727
Hunter-Lab	76.4089, 5.8275, 10.2671

Details

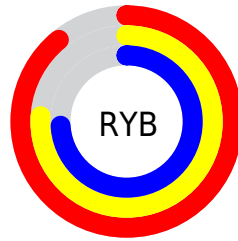
The YUV color $202.8840, -7.3378, 20.2727$ is a light color, and the websafe version is hex FFCCCC . A complement of this color would be $211.1160, 7.3378, -20.2727$, and the grayscale version is $203.0000, 0.0000, 0.0000$.

A 20% lighter version of the original color is $251.3980, -3.6472, 3.1590$, and $148.4000, -6.6062, 18.9432$ is the 20% darker color. If you saturate the color by 10%, you get $189.1090, -11.8857, 32.3534$, and if you desaturate by 10%, it is $216.6590, -2.7899, 8.1921$.

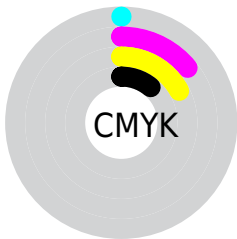
Distribution



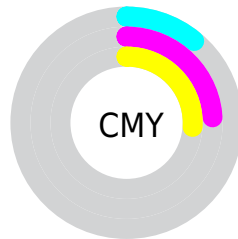
- Red (89%)
- Green (76%)
- Blue (74%)



- Red (89%)
- Yellow (76%)
- Blue (74%)



- Cyan (0%)
- Magenta (14%)
- Yellow (17%)
- Black (11%)



- Cyan (11%)
- Magenta (24%)
- Yellow (26%)

Brightness & Saturation Gradients

These gradients show how the YUV color 202.8840, -7.3378, 20.2727 changes by changing the brightness by 10 percent. The first figure shows a shift by +10% for each color and the second figure -10%.

Similar to the brightness gradients but the following saturation gradients show a change of the YUV color 202.8840, -7.3378, 20.2727 by changing the saturation by 10% instead.

■ 202.8840, -7.3378,
20.2727

■ 202.8840, -7.3378,
20.2727

255.0000, 0.0000,
0.0000

■ 175.5850, -7.1904,
19.6580

■ 251.3980, -3.6472,
3.1590

■ 148.4000, -6.6062,
18.9432

■ 123.1010, -6.4588,
18.3284

■ 97.8020, -6.3114,
17.7136

■ 73.9050, -5.8692,
15.8693

■ 50.7200, -5.2850,
15.1546

■ 29.8230, -4.8427,

13.3102

■ 7.4750, -3.6852,
15.3694

■ 0.0000, 0.0000,
0.0000

■ 202.8840, -7.3378,
20.2727

■ 202.8840, -7.3378,
20.2727

■ 189.1090,
-11.8857, 32.3534

■ 216.6590, -2.7899,
8.1921

■ 175.4480,
-15.9969, 44.3341

■ 230.3200, 1.3212,
-3.7886

■ 161.6730,
-20.5448, 56.4148

■ 243.9810, 5.4324,
-15.7693

■ 148.0120,
-24.6559, 68.3955

■ 246.3290, 4.2748,
-17.8285

■ 134.2370,
-29.2038, 80.4762

■ 120.4620,
-33.7518, 92.5568

■ 106.8010,
-37.8629, 104.5375

■ 93.0260, -42.4108,
116.6182

■ 88.7060, -43.7321,
120.4068

Harmonies

Analogous

The Analogous color harmony consists of three colors that are next to each other on the color wheel.



203.5510, -2.2436, 19.6878



202.8840, -7.3378, 20.2727



201.9390, -10.8159, 15.8395

Triad

The Triadic color harmony groups three colors that are evenly spaced from another and form a triangle on the color wheel.



202.8840, -7.3378, 20.2727



197.7010, -3.3036, -13.7698



200.6320, 11.5204, -8.4473

Complementary

The Complementary color scheme is a pair of colors which are on the opposite of each other on the color wheel.



202.8840, -7.3378, 20.2727



211.1160, 7.3378, -20.2727

Split Complementary

Split-complementary colors differ from the complementary color scheme. The scheme consists of three colors, the original color and two neighbors of the complement color.



198.8650, 11.4056, -18.2986



202.8840, -7.3378, 20.2727



196.8510, 2.5385, -20.9173

Square

The Square scheme is like the rectangle color scheme, but the four colors are evenly spaced on the color wheel.



202.8840, -7.3378, 20.2727



198.6870, -8.7197, -3.2335



197.3330, 8.2168, -22.2170



202.3130, 8.7197, 3.2335

Rectangle

The Rectangle color scheme consists of four colors that form a rectangle on the color wheel.



202.8840, -7.3378, 20.2727



200.7920, -11.2365, 10.7064



197.3330, 8.2168, -22.2170



200.3110, 11.6787, -12.5507

Sweetspot

The Sweet Spot groups the original color and five complimentary colors.



202.8840, -7.3378, 20.2727



247.0610, -2.4951, 6.9625



203.0100, 8.3761, 20.1622



122.9790, -1.4686, 4.4034



0.0000, 0.0000, 0.0000



128.0000, 0.0000, 0.0000

Same Dimension

The Same Dimension uses a secret algorithm to generate beautiful new colors.



202.8840, -7.3378, 20.2727



223.9450, -9.8329, 27.2352



214.0370, -12.8362, 10.4916



105.4630, -2.2003, 5.7329



69.0600, -34.0466, 93.7864



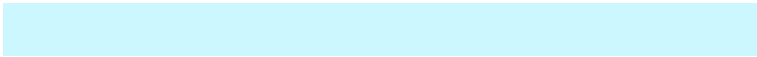
19.0480, -9.3907, 25.3909

Inverse Universe

The Inverse Universe completely reimagines the original color for something new.



211.1160, 7.3378, -20.2727



235.0550, 9.8329, -27.2352



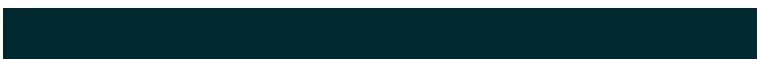
199.9630, 12.8362, -10.4916



107.5370, 2.2003, -5.7329



106.9400, 34.0466, -93.7864



29.5390, 9.1013, -25.9057

Previews

White Background



This preview shows how the YUV color 202.8840, -7.3378, 20.2727 looks on a white background.

Color Contrast Check

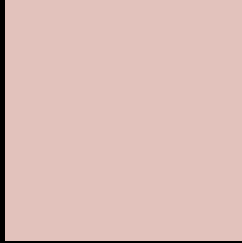
Large Text (above 18pt) WCAG AA × Fail

Any Text WCAG AA × Fail

Large Text (above 18pt) WCAG AAA × Fail

Any Text WCAG AAA × Fail

Black Background



This preview shows how the YUV color 202.8840, -7.3378, 20.2727 looks on a black background.

Color Contrast Check

Large Text (above 18pt) WCAG AA ✓ Pass

Any Text WCAG AA ✓ Pass

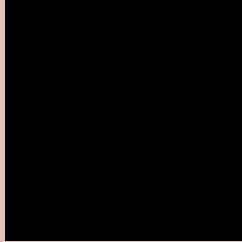
Large Text (above 18pt) WCAG AAA ✓ Pass

Any Text WCAG AAA ✓ Pass

If you want to check with other color combinations, try the [Color Contrast Checker](#).

YUV 202.8840, -7.3378, 20.2727

Background



This preview shows how black text looks on a background with the YUV color 202.8840, -7.3378, 20.2727.

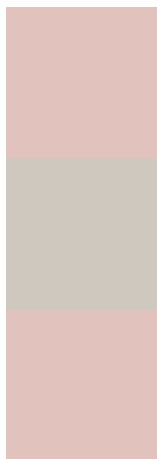


This preview shows how white text looks on a background with the YUV color 202.8840, -7.3378,

Color Blindness Simulation

Color vision deficiency is a very complex topic, and I could not describe the different causes any better than Wikipedia does, so if you want to learn more, you should check out their [article about color blindness](#).

Dichromacy



Original Color

202.8840, -7.3378, 20.2727

Protanopia

201.0670, -4.9630, 5.2032

Deuteranopia

202.5850, -7.1904, 19.6580



Tritanopia

203.7730, 1.0979, 21.2471

Trichromacy



Original Color

202.8840, -7.3378, 20.2727

Protanomaly

201.8720, -5.8529, 10.6363

Deuteranomaly

202.5850, -7.1904, 19.6580

Tritanomaly

203.2630, -2.1017, 20.8173

Monochromacy



Original Color

202.8840, -7.3378, 20.2727

Achromatopsia

203.0000, 0.0000, 0.0000

Achromatomaly

203.0610, -2.4951, 6.9625

CSS Examples

Text

The CSS property to change the color of the text to YUV 202.8840, -7.3378, 20.2727 is called "color". The color property can be set on classes, ids or directly on the HTML element.

This example shows how text in the color `rgb(226, 194, 188)` looks like.

```
.text, #text, p{  
    color:rgb(226, 194, 188)  
}
```

If you want to add a text shadow in that color use the text-shadow property, you can generate a text shadow directly with our [CSS Text Shadow Generator](#).

Here you see how black text with a 4 pixel rgb(226, 194, 188) colored shadow looks like.

```
.shadow{ text-shadow: 4px 4px 2px rgb(226, 194, 188) }
```

Border

The CSS property to change the border of an element to YUV 202.8840, -7.3378, 20.2727 is called "border". The border property can be set on classes, ids or directly on the HTML element.

This example shows the color as border, it can be applied via the CSS property "border" or "border-color".

```
.border, #border, table{ border:4px solid rgb(226, 194, 188) }
```


If only the border color should be changed use the property `border-color`.

```
.border{ border-color:rgb(226, 194, 188) }
```

If you want to add a box shadow in that color use:

Here you see how a box with a 4 pixel `rgb(226, 194, 188)` colored shadow looks like.

```
.boxshadow{ -moz-box-shadow:4px 4px 4px 4px rgb(226, 194, 188); -webkit-box-shadow:4px 4px 4px 4px rgb(226, 194, 188); box-shadow:4px 4px 4px 4px rgb(226, 194, 188) }
```

Background

The CSS property to change the background color of an element to YUV 202.8840, -7.3378, 20.2727 is called "background". The background property can be set on classes, ids or directly on the HTML element.

```
.background, #background, body{  
background: rgb(226, 194, 188) }
```

If only the background color should be changed can be used:

```
.background{ background-color: rgb(226,  
194, 188) }
```

This example shows the color as background, it is applied via the CSS property "background".

To optimize and compress your CSS code, you can use our [online CSS compressor and optimizer](#) based on csstidy. If you want to create a linear or radial gradient as background or border, check our [CSS Gradient Generator](#).

Hey! You found this booklet interesting? Support Converting Colors with the new Membership Option!

The pro membership hides all ads, plus gives you double the colors in the color bucket, and more awesome pro features!

[Learn more, Memberships starting at \\$2.50/m!](#)

**Follow me
on Twitter!**

@ConvertingColor