

# Converting Colors

YUV(202.9250, -16.2320,  
26.3758)

Have a look what the booklet for  
YUV(202.9250, -16.2320, 26.3758)  
contains.

<b>YUV(202.9250, -16.2320, 26.3758)</b> .....	3
<b><i>Conversions</i></b> .....	4
<b><i>Details</i></b> .....	6
<b><i>Harmonies</i></b> .....	12
<b><i>Previews</i></b> .....	24
<b><i>Color Blindness Simulation</i></b> .....	28
<b><i>CSS Examples</i></b> .....	31

# Color

**YUV(202.9250, -16.2320,  
26.3758)**

# Conversions

## Conversions Part 1

Format	Color
Hex	E9C2AA
RGB	233, 194, 170
RGB Percent	91%, 76%, 67%
CMY	0.0863, 0.2392, 0.3333
CMYK	0.00, 0.17, 0.27, 0.09
HSL	23°, 59%, 79%
HSV	23°, 27%, 91%
XYZ	60.1518, 58.8095, 46.2112
YIQ	202.9250, 30.9480, 0.8040

# Conversions

## Conversions Part 2

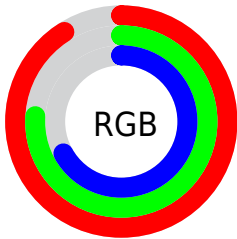
<b>Format</b>	<b>Color</b>
<b>R<sub>YB</sub></b>	233, 209, 170
Decimal	15319722
CIE Lab	81.19, 10.37, 17.26
CIE LCh	81, 20.139, 59.005
Yxy	58.8095, 0.3642, 0.3560
Android (android.graphics.Color)	4293509802 (0xFFE9C2AA)
YUV	202.9250, -16.2320, 26.3758
Hunter-Lab	76.6873, 5.8084, 17.9534

# Details

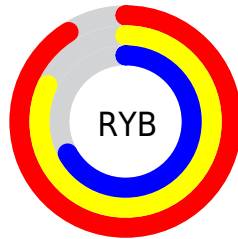
The YUV color  $202.9250, -16.2320, 26.3758$  is a light color, and the websafe version is hex  $\text{FFCCCC}$ . A complement of this color would be  $200.0750, 16.2320, -26.3758$ , and the grayscale version is  $203.0000, 0.0000, 0.0000$ .

A 20% lighter version of the original color is  $249.2320, -11.9464, 5.0585$ , and  $148.2560, -14.9162, 24.3315$  is the 20% darker color. If you saturate the color by 10%, you get  $192.0850, -22.2269, 35.8825$ , and if you desaturate by 10%, it is  $213.7650, -10.2371, 16.8691$ .

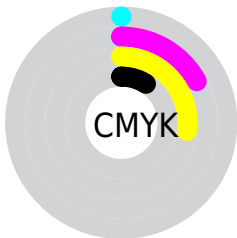
# Distribution



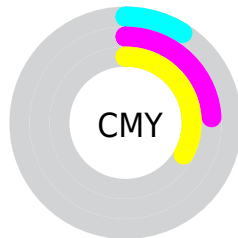
- Red (91%)
- Green (76%)
- Blue (67%)



- Red (91%)
- Yellow (82%)
- Blue (67%)



- Cyan (0%)
- Magenta (17%)
- Yellow (27%)
- Black (9%)



- Cyan (9%)
- Magenta (24%)
- Yellow (33%)

# Brightness & Saturation Gradients

These gradients show how the YUV color 202.9250, -16.2320, 26.3758 changes by changing the brightness by 10 percent. The first figure shows a shift by +10% for each color and the second figure -10%.

Similar to the brightness gradients but the following saturation gradients show a change of the YUV color 202.9250, -16.2320, 26.3758 by changing the saturation by 10% instead.



202.9250,  
-16.2320, 26.3758

202.9250,  
-16.2320, 26.3758

255.0000, 0.0000,  
0.0000

175.3270,  
-15.9372, 25.1462

249.2320,  
-11.9464, 5.0585

148.2560,  
-14.9162, 24.3315

254.8860, -0.4368,  
0.1000

122.6580,  
-14.6214, 23.1019

97.4730, -14.0372,  
22.3872

73.6900, -13.1582,  
20.4429

50.9070, -12.2792,  
18.4986

28.7390, -14.1683,

17.7689

■ 7.7740, -3.8326,  
15.9842

■ 0.0000, 0.0000,  
0.0000

■ 202.9250,  
-16.2320, 26.3758

■ 202.9250,  
-16.2320, 26.3758

■ 192.0850,  
-22.2269, 35.8825

■ 213.7650,  
-10.2371, 16.8691

■ 180.5440,  
-28.3692, 46.0039

■ 225.3060, -4.0949,  
6.7476

■ 169.7040,  
-34.3641, 55.5106

■ 236.1460, 1.9000,  
-2.7590

■ 158.2770,  
-40.0696, 65.5321

■ 246.6610, 4.1111,  
-11.9807

■ 147.3230,  
-46.5012, 75.1387

■ 248.4220, 3.2430,  
-13.5251

■ 135.8960,  
-52.2067, 85.1602

■ 125.0560,  
-58.2016, 94.6669

■ 121.9100,  
-60.1016, 97.4259

# Harmonies

## Analogous

The Analogous color harmony consists of three colors that are next to each other on the color wheel.



204.5650, -10.1385, 31.9535



202.9250, -16.2320, 26.3758



200.9790, -18.2306, 14.0504

# Triad

The Triadic color harmony groups three colors that are evenly spaced from another and form a triangle on the color wheel.



202.9250, -16.2320, 26.3758



195.0730, 2.4290, -32.5130



203.4250, 15.5665, 0.5043

# Complementary

The Complementary color scheme is a pair of colors which are on the opposite of each other on the color wheel.



202.9250, -16.2320, 26.3758



200.0750, 16.2320, -26.3758

# Split Complementary

Split-complementary colors differ from the complementary color scheme. The scheme consists of three colors, the original color and two neighbors of the complement color.



200.2270, 19.1151, -17.7391



202.9250, -16.2320, 26.3758



194.5590, 12.0494, -38.2012

# Square

The Square scheme is like the rectangle color scheme, but the four colors are evenly spaced on the color wheel.



202.9250, -16.2320, 26.3758



196.3430, -7.0711, -18.7178



196.7860, 17.8535, -33.1383



204.8850, 7.9447, 18.5179



# Rectangle

The Rectangle color scheme consists of four colors that form a rectangle on the color wheel.



202.9250, -16.2320, 26.3758



199.6680, -16.5983, 3.7992



196.7860, 17.8535, -33.1383



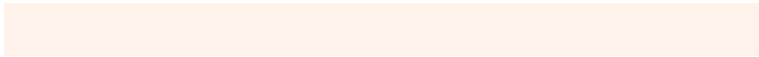
202.4350, 17.0405, -5.6435

# Sweetspot

The Sweet Spot groups the original color and five complimentary colors.



202.9250, -16.2320, 26.3758



245.0890, -4.9739, 8.6919



193.3970, 8.1853, 34.7318



121.8220, -3.3632, 5.4181



0.0000, 0.0000, 0.0000



128.0000, 0.0000, 0.0000



# Same Dimension

The Same Dimension uses a secret algorithm to generate beautiful new colors.



202.9250, -16.2320, 26.3758



215.7150, -21.0585, 34.4529



221.1220, -25.2031, 10.4170



111.6370, -2.7790, 4.7034



94.6220, -46.6486, 75.7535



27.8860, -13.7478, 22.9020

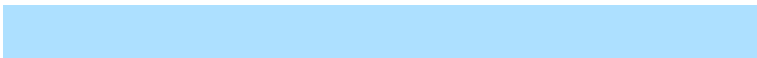


# Inverse Universe

The Inverse Universe completely reimagines the original color for something new.



200.0750, 16.2320, -26.3758



212.2850, 21.0585, -34.4529



181.8780, 25.2031, -10.4170



111.3630, 2.7790, -4.7034



86.3780, 46.6486, -75.7535



25.5270, 14.0372, -22.3872



# Previews

## White Background



This preview shows how the YUV color 202.9250, -16.2320, 26.3758 looks on a white background.

## Color Contrast Check

Large Text (above 18pt) WCAG AA × Fail

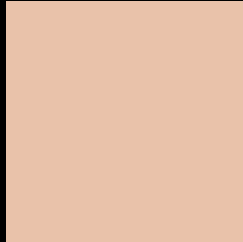
Any Text WCAG AA × Fail

Large Text (above 18pt) WCAG AAA × Fail

Any Text WCAG AAA × Fail



# Black Background



This preview shows how the YUV color 202.9250, -16.2320, 26.3758 looks on a black background.

## Color Contrast Check

Large Text (above 18pt) WCAG AA ✓ Pass

Any Text WCAG AA ✓ Pass

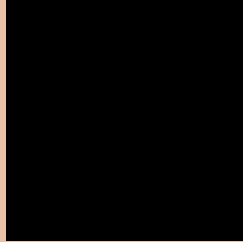
Large Text (above 18pt) WCAG AAA ✓ Pass

Any Text WCAG AAA ✓ Pass

If you want to check with other color combinations, try the [Color Contrast Checker](#).

# YUV 202.9250, -16.2320, 26.3758

## Background



This preview shows how black text looks on a background with the YUV color 202.9250, -16.2320, 26.3758.



This preview shows how white text looks on a background with the YUV color 202.9250, -16.2320,

26.3758.

# Color Blindness Simulation

Color vision deficiency is a very complex topic, and I could not describe the different causes any better than Wikipedia does, so if you want to learn more, you should check out their [article about color blindness](#).

## Dichromacy



### Original Color

202.9250, -16.2320, 26.3758

### Protanopia

201.2110, -13.4150, 9.4620

### Deuteranopia

202.9250, -16.2320, 26.3758



## Tritanopia

205.0620, -0.5236, 28.0096

# Trichromacy



## Original Color

202.9250, -16.2320, 26.3758

## Protanomaly

201.7280, -14.1629, 16.0245

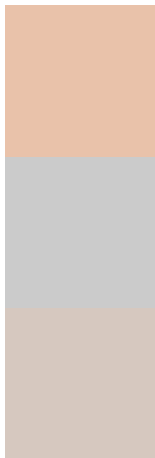
## Deuteranomaly

202.9250, -16.2320, 26.3758

## Tritanomaly

204.5690, -6.1965, 27.5650

# Monochromacy



## Original Color

202.9250, -16.2320, 26.3758

## Achromatopsia

203.0000, 0.0000, 0.0000

## Achromatomaly

203.1600, -5.9949, 9.5067

# CSS Examples

## Text

The CSS property to change the color of the text to YUV 202.9250, -16.2320, 26.3758 is called "color". The color property can be set on classes, ids or directly on the HTML element.

This example shows how text in the color `rgb(233, 194, 170)` looks like.

```
.text, #text, p{  
    color:rgb(233, 194, 170)  
}
```

If you want to add a text shadow in that color use the text-shadow property, you can generate a text shadow directly with our [CSS Text Shadow Generator](#).

Here you see how black text with a 4 pixel rgb(233, 194, 170) colored shadow looks like.

```
.shadow{ text-shadow: 4px 4px 2px rgb(233, 194, 170) }
```

## Border

The CSS property to change the border of an element to YUV 202.9250, -16.2320, 26.3758 is called "border".

The border property can be set on classes, ids or directly on the HTML element.

This example shows the color as border, it can be applied via the CSS property "border" or "border-color".

```
.border, #border, table{ border:4px solid rgb(233, 194, 170) }
```



If only the border color should be changed use the property border-color.

```
.border{ border-color:rgb(233, 194, 170) }
```

If you want to add a box shadow in that color use:

Here you see how a box with a 4 pixel rgb(233, 194, 170) colored shadow looks like.

```
.boxshadow{ -moz-box-shadow:4px 4px 4px  
4px rgb(233, 194, 170); -webkit-box-  
shadow:4px 4px 4px 4px rgb(233, 194, 170);  
box-shadow:4px 4px 4px 4px rgb(233, 194,  
170) }
```

# Background

The CSS property to change the background color of an element to YUV 202.9250, -16.2320, 26.3758 is called "background". The background property can be set on classes, ids or directly on the HTML element.

```
.background, #background, body{  
background: rgb(233, 194, 170) }
```

If only the background color should be changed can be used:

```
.background{ background-color: rgb(233,  
194, 170) }
```

This example shows the color as background, it is applied via the CSS property "background".

To optimize and compress your CSS code, you can use our [online CSS compressor and optimizer](#) based on csstidy. If you want to create a linear or radial gradient as background or border, check our [CSS Gradient Generator](#).

Hey! You found this booklet interesting? Support Converting Colors with the new Membership Option!

The pro membership hides all ads, plus gives you double the colors in the color bucket, and more awesome pro features!

**[Learn more, Memberships starting at \\$2.50/m!](#)**

**Follow me  
on Twitter!**

@ConvertingColor