

# Converting Colors

YUV(203.2970, -7.0484,  
20.7875)

Have a look what the booklet for  
YUV(203.2970, -7.0484, 20.7875)  
contains.

<b>YUV(203.2970, -7.0484, 20.7875)</b> .....	3
<b><i>Conversions</i></b> .....	4
<b><i>Details</i></b> .....	6
<b><i>Harmonies</i></b> .....	12
<b><i>Previews</i></b> .....	24
<b><i>Color Blindness Simulation</i></b> .....	28
<b><i>CSS Examples</i></b> .....	31

# Color

**YUV(203.2970, -7.0484,  
20.7875)**

# Conversions

## Conversions Part 1

Format	Color
Hex	E3C2BD
RGB	227, 194, 189
RGB Percent	89%, 76%, 74%
CMY	0.1098, 0.2392, 0.2588
CMYK	0.00, 0.15, 0.17, 0.11
HSL	8°, 40%, 82%
HSV	8°, 17%, 89%
XYZ	60.1556, 58.5886, 56.2823
YIQ	203.2970, 21.2730, 5.4410

# Conversions

## Conversions Part 2

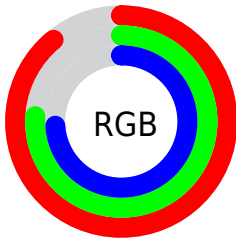
Format	Color
R <sub>Y</sub> B	227, 195, 189
Decimal	14926525
CIE Lab	81.06, 10.91, 6.84
CIE LCh	81, 12.875, 32.111
Yxy	58.5886, 0.3437, 0.3347
Android (android.graphics.Color)	4293116605 (0xFFE3C2BD)
YUV	203.2970, -7.0484, 20.7875
Hunter-Lab	76.5432, 6.3334, 9.9842

# Details

The YUV color  $203.2970, -7.0484, 20.7875$  is a light color, and the websafe version is hex  $\text{FFCCCC}$ . A complement of this color would be  $212.7030, 7.0484, -20.7875$ , and the grayscale version is  $203.0000, 0.0000, 0.0000$ .

A 20% lighter version of the original color is  $251.5120, -3.2104, 3.0590$ , and  $148.8130, -6.3168, 19.4580$  is the 20% darker color. If you saturate the color by 10%, you get  $188.9350, -11.3070, 33.3830$ , and if you desaturate by 10%, it is  $217.6590, -2.7899, 8.1921$ .

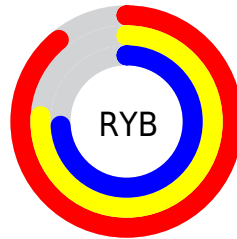
# Distribution



Red (89%)

Green (76%)

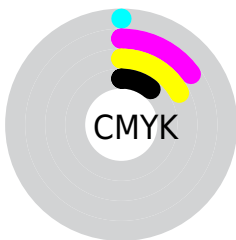
Blue (74%)



Red (89%)

Yellow (76%)

Blue (74%)

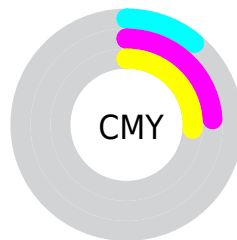


Cyan (0%)

Magenta (15%)

Yellow (17%)

Black (11%)



Cyan (11%)

Magenta (24%)

Yellow (26%)

# Brightness & Saturation Gradients

These gradients show how the YUV color 203.2970, -7.0484, 20.7875 changes by changing the brightness by 10 percent. The first figure shows a shift by +10% for each color and the second figure -10%.

Similar to the brightness gradients but the following saturation gradients show a change of the YUV color 203.2970, -7.0484, 20.7875 by changing the saturation by 10% instead.





 203.2970, -7.0484,  
20.7875


 203.2970, -7.0484,  
20.7875


255.0000, 0.0000,  
0.0000


 175.9980, -6.9010,  
20.1728


 251.5120, -3.2104,  
3.0590

 148.8130, -6.3168,  
19.4580

 123.1010, -6.4588,  
18.3284

 97.9160, -5.8746,  
17.6137

 74.3180, -5.5798,  
16.3841

 51.1330, -4.9956,  
15.6694

 30.2360, -4.5533,

13.8250

■ 7.7740, -3.8326,  
15.9842

■ 0.0000, 0.0000,  
0.0000

■ 203.2970, -7.0484,  
20.7875

■ 203.2970, -7.0484,  
20.7875

■ 188.9350,  
-11.3070, 33.3830

■ 217.6590, -2.7899,  
8.1921

■ 175.2740,  
-15.4181, 45.3637

■ 231.3200, 1.3212,  
-3.7886

■ 160.9120,  
-19.6766, 57.9592

■ 245.4540, 4.7062,  
-16.1842

■ 146.5500,  
-23.9351, 70.5547

■ 246.6280, 4.1274,  
-17.2138

■ 132.3020,  
-27.7569, 83.0501

■ 118.5270,  
-32.3048, 95.1308

■ 104.1650,  
-36.5633, 107.7263

■ 89.8030, -40.8219,  
120.3218

■ 85.4830, -42.1431,  
124.1104

# Harmonies

## Analogous

The Analogous color harmony consists of three colors that are next to each other on the color wheel.



203.7790, -1.3700, 19.4878



203.2970, -7.0484, 20.7875



202.2380, -10.9633, 16.4543

# Triad

The Triadic color harmony groups three colors that are evenly spaced from another and form a triangle on the color wheel.



203.2970, -7.0484, 20.7875



197.8860, -3.8878, -13.0550



201.0340, 11.8152, -9.6768

# Complementary

The Complementary color scheme is a pair of colors which are on the opposite of each other on the color wheel.



203.2970, -7.0484, 20.7875



212.7030, 7.0484, -20.7875

# Split Complementary

Split-complementary colors differ from the complementary color scheme. The scheme consists of three colors, the original color and two neighbors of the complement color.



199.1530, 11.2636, -19.4282



203.2970, -7.0484, 20.7875



197.7370, 2.1017, -20.8173

# Square

The Square scheme is like the rectangle color scheme, but the four colors are evenly spaced on the color wheel.



203.2970, -7.0484, 20.7875



199.2850, -9.0145, -2.0039



197.6210, 8.0748, -23.3466



202.8290, 9.4513, 1.9040



# Rectangle

The Rectangle color scheme consists of four colors that form a rectangle on the color wheel.



203.2970, -7.0484, 20.7875



201.3900, -11.5313, 11.9360



197.6210, 8.0748, -23.3466



200.1260, 12.2629, -13.2655

# Sweetspot

The Sweet Spot groups the original color and five complimentary colors.



203.2970, -7.0484, 20.7875



247.0610, -2.4951, 6.9625



204.2380, 9.2497, 19.9623



122.9790, -1.4686, 4.4034



0.0000, 0.0000, 0.0000



128.0000, 0.0000, 0.0000



# Same Dimension

The Same Dimension uses a secret algorithm to generate beautiful new colors.



203.2970, -7.0484, 20.7875



223.3580, -9.5435, 27.7500



213.8630, -12.2575, 11.5211



107.7620, -2.3477, 6.3477



67.0220, -33.0418, 98.2047



19.3580, -9.5435, 27.7500

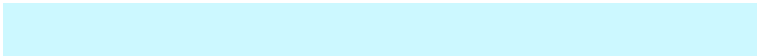


# Inverse Universe

The Inverse Universe completely reimagines the original color for something new.



212.7030, 7.0484, -20.7875



235.6420, 9.5435, -27.7500



202.1370, 12.2575, -11.5211



110.2380, 2.3477, -6.3477



111.3910, 33.3312, -97.6899

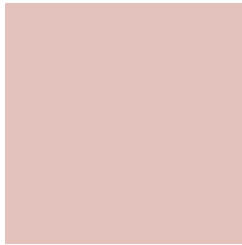


31.6420, 9.5435, -27.7500



# Previews

## White Background



This preview shows how the YUV color 203.2970, -7.0484, 20.7875 looks on a white background.

## Color Contrast Check

Large Text (above 18pt) WCAG AA × Fail

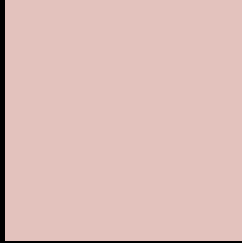
Any Text WCAG AA × Fail

Large Text (above 18pt) WCAG AAA × Fail

Any Text WCAG AAA × Fail



# Black Background



This preview shows how the YUV color 203.2970, -7.0484, 20.7875 looks on a black background.

## Color Contrast Check

Large Text (above 18pt) WCAG AA ✓ Pass

Any Text WCAG AA ✓ Pass

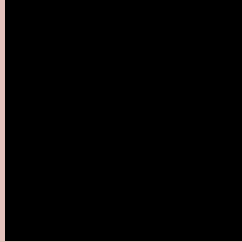
Large Text (above 18pt) WCAG AAA ✓ Pass

Any Text WCAG AAA ✓ Pass

If you want to check with other color combinations, try the [Color Contrast Checker](#).

# YUV 203.2970, -7.0484, 20.7875

## Background



This preview shows how black text looks on a background with the YUV color 203.2970, -7.0484, 20.7875.



This preview shows how white text looks on a background with the YUV color 203.2970, -7.0484,

20.7875.

# Color Blindness Simulation

Color vision deficiency is a very complex topic, and I could not describe the different causes any better than Wikipedia does, so if you want to learn more, you should check out their [article about color blindness](#).

## Dichromacy



### Original Color

203.2970, -7.0484, 20.7875

### Protanopia

201.8820, -4.3788, 4.4885

### Deuteranopia

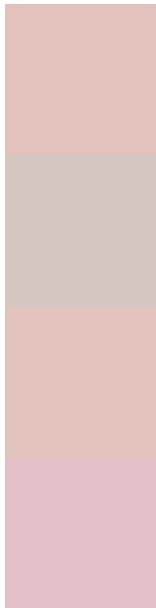
203.5850, -7.1904, 19.6580



## Tritanopia

204.0720, 0.9505, 21.8619

# Trichromacy



## Original Color

203.2970, -7.0484, 20.7875

## Protanomaly

202.1000, -4.9793, 10.4363

## Deuteranomaly

203.5850, -7.1904, 19.6580

## Tritanomaly

203.6760, -1.8123, 21.3321

# Monochromacy



## Original Color

203.2970, -7.0484, 20.7875

## Achromatopsia

203.0000, 0.0000, 0.0000

## Achromatomaly

203.3600, -2.6425, 7.5773

# CSS Examples

## Text

The CSS property to change the color of the text to YUV 203.2970, -7.0484, 20.7875 is called "color". The color property can be set on classes, ids or directly on the HTML element.

This example shows how text in the color `rgb(227, 194, 189)` looks like.

```
.text, #text, p{  
    color:rgb(227, 194, 189)  
}
```

If you want to add a text shadow in that color use the text-shadow property, you can generate a text shadow directly with our [CSS Text Shadow Generator](#).

Here you see how black text with a 4 pixel rgb(227, 194, 189) colored shadow looks like.

```
.shadow{ text-shadow: 4px 4px 2px rgb(227, 194, 189) }
```

## Border

The CSS property to change the border of an element to YUV 203.2970, -7.0484, 20.7875 is called "border". The border property can be set on classes, ids or directly on the HTML element.

This example shows the color as border, it can be applied via the CSS property "border" or "border-color".

```
.border, #border, table{ border:4px solid rgb(227, 194, 189) }
```



If only the border color should be changed use the property border-color.

```
.border{ border-color:rgb(227, 194, 189) }
```

If you want to add a box shadow in that color use:

Here you see how a box with a 4 pixel rgb(227, 194, 189) colored shadow looks like.

```
.boxshadow{ -moz-box-shadow:4px 4px 4px  
4px rgb(227, 194, 189); -webkit-box-  
shadow:4px 4px 4px 4px rgb(227, 194, 189);  
box-shadow:4px 4px 4px 4px rgb(227, 194,  
189) }
```

# Background

The CSS property to change the background color of an element to YUV 203.2970, -7.0484, 20.7875 is called "background". The background property can be set on classes, ids or directly on the HTML element.

```
.background, #background, body{  
background: rgb(227, 194, 189) }
```

If only the background color should be changed can be used:

```
.background{ background-color: rgb(227,  
194, 189) }
```

This example shows the color as background, it is applied via the CSS property "background".

To optimize and compress your CSS code, you can use our [online CSS compressor and optimizer](#) based on csstidy. If you want to create a linear or radial gradient as background or border, check our [CSS Gradient Generator](#).

Hey! You found this booklet interesting? Support Converting Colors with the new Membership Option!

The pro membership hides all ads, plus gives you double the colors in the color bucket, and more awesome pro features!

**[Learn more, Memberships starting at \\$2.50/m!](#)**

**Follow me  
on Twitter!**

@ConvertingColor