

Converting Colors

YUV(203.8600, -0.9170,
14.1548)

Have a look what the booklet for
YUV(203.8600, -0.9170, 14.1548)
contains.

YUV(203.8600, -0.9170, 14.1548)	3
<i>Conversions</i>	4
<i>Details</i>	6
<i>Harmonies</i>	12
<i>Previews</i>	24
<i>Color Blindness Simulation</i>	28
<i>CSS Examples</i>	31

Color

**YUV(203.8600, -0.9170,
14.1548)**

Conversions

Conversions Part 1

Format	Color
Hex	DCC4CA
RGB	220, 196, 202
RGB Percent	86%, 77%, 79%
CMY	0.1373, 0.2314, 0.2078
CMYK	0.00, 0.11, 0.08, 0.14
HSL	345°, 26%, 82%
HSV	345°, 11%, 86%
XYZ	59.9158, 58.9598, 64.0996
YIQ	203.8600, 12.3780, 6.9540

Conversions

Conversions Part 2

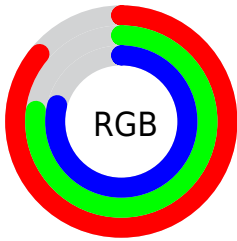
Format	Color
R _Y B	220, 196, 202
Decimal	14468298
CIE Lab	81.27, 9.45, 0.09
CIE LCh	81, 9.453, 0.515
Yxy	58.9598, 0.3275, 0.3222
Android (android.graphics.Color)	4292658378 (0xFFDCC4CA)
YUV	203.8600, -0.9170, 14.1548
Hunter-Lab	76.7853, 4.9099, 4.2550

Details

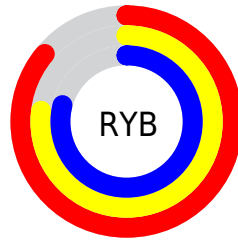
The YUV color $203.8600, -0.9170, 14.1548$ is a light color, and the websafe version is hex `CCCCCC`. A complement of this color would be $212.1400, 0.9170, -14.1548$, and the grayscale version is $204.0000, 0.0000, 0.0000$.

A 20% lighter version of the original color is $253.8260, 0.5788, 1.0296$, and $149.5610, -0.7696, 13.5400$ is the 20% darker color. If you saturate the color by 10%, you get $189.0080, -1.9759, 27.1800$, and if you desaturate by 10%, it is $218.7120, 0.1420, 1.1296$.

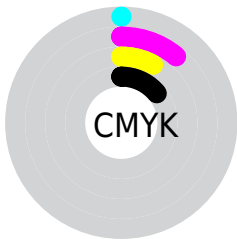
Distribution



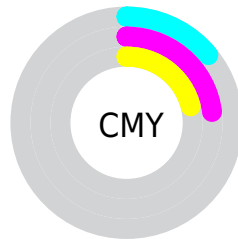
- Red (86%)
- Green (77%)
- Blue (79%)



- Red (86%)
- Yellow (77%)
- Blue (79%)



- Cyan (0%)
- Magenta (11%)
- Yellow (8%)
- Black (14%)



- Cyan (14%)
- Magenta (23%)
- Yellow (21%)

Brightness & Saturation Gradients

These gradients show how the YUV color 203.8600, -0.9170, 14.1548 changes by changing the brightness by 10 percent. The first figure shows a shift by +10% for each color and the second figure -10%.

Similar to the brightness gradients but the following saturation gradients show a change of the YUV color 203.8600, -0.9170, 14.1548 by changing the saturation by 10% instead.

203.8600, -0.9170,
14.1548

203.8600, -0.9170,
14.1548

255.0000, 0.0000,
0.0000

176.5610, -0.7696,
13.5400

253.8260, 0.5788,
1.0296

149.5610, -0.7696,
13.5400

123.8490, -0.9116,
12.4104

98.8490, -0.9116,
12.4104

74.6640, -0.3274,
11.6957

52.2510, -0.6167,
11.1809

30.6530, -0.3219,

9.9513

7.7460, -1.3538,
14.2548

0.0000, 0.0000,
0.0000

203.8600, -0.9170,
14.1548

203.8600, -0.9170,
14.1548

189.0080, -1.9759,
27.1800

218.7120, 0.1420,
1.1296

174.2700, -2.5981,
40.1052

233.4500, 0.7642,
-11.7956

159.4180, -3.6571,
53.1304

244.1930, 3.8489,
-21.2173

144.6800, -4.2792,
66.0556

244.5350, 5.1592,
-21.5172

■ 129.8280, -5.3382,
79.0808

■ 115.0900, -5.9604,
92.0061

■ 100.2380, -7.0193,
105.0313

■ 85.5000, -7.6415,
117.9565

■ 72.0500, -8.4056,
129.7522

Harmonies

Analogous

The Analogous color harmony consists of three colors that are next to each other on the color wheel.



203.6790, 3.6093, 9.0515



203.8600, -0.9170, 14.1548



203.1330, -4.9956, 15.6694

Triad

The Triadic color harmony groups three colors that are evenly spaced from another and form a triangle on the color wheel.



203.8600, -0.9170, 14.1548



200.5670, -6.6885, -1.3743



200.0890, 8.3371, -14.1101

Complementary

The Complementary color scheme is a pair of colors which are on the opposite of each other on the color wheel.



203.8600, -0.9170, 14.1548



212.1400, 0.9170, -14.1548

Split Complementary

Split-complementary colors differ from the complementary color scheme. The scheme consists of three colors, the original color and two neighbors of the complement color.



199.2690, 5.2904, -16.8989



203.8600, -0.9170, 14.1548



199.4350, -3.1725, -9.1515

Square

The Square scheme is like the rectangle color scheme, but the four colors are evenly spaced on the color wheel.



203.8600, -0.9170, 14.1548



201.4540, -8.6048, 6.6178



198.9550, 1.5012, -14.8695



201.8340, 8.4628, -7.7474

Rectangle

The Rectangle color scheme consists of four colors that form a rectangle on the color wheel.



203.8600, -0.9170, 14.1548



203.2530, -7.0267, 13.8101



198.9550, 1.5012, -14.8695



199.8500, 7.4690, -15.6544

Sweetspot

The Sweet Spot groups the original color and five complimentary colors.



203.8600, -0.9170, 14.1548



249.6200, -0.3057, 4.7183



204.1180, 7.8298, 8.6665



124.0220, -0.0108, 3.4887



0.0000, 0.0000, 0.0000



128.0000, 0.0000, 0.0000

Same Dimension

The Same Dimension uses a secret algorithm to generate beautiful new colors.



203.8600, -0.9170, 14.1548



232.7790, -1.3700, 19.4878



206.6980, -5.2741, 11.6659



102.5170, -0.7479, 6.5626



56.6290, -6.7191, 102.0574



15.0080, -1.9759, 27.1800

Inverse Universe

The Inverse Universe completely reimagines the original color for something new.



203.8600, -0.9170, 14.1548



232.7790, -1.3700, 19.4878



209.3020, 5.2741, -11.6659



102.5170, -0.7479, 6.5626



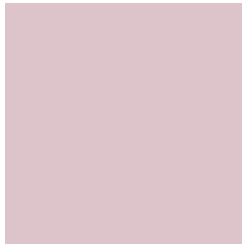
56.6290, -6.7191, 102.0574



15.0080, -1.9759, 27.1800

Previews

White Background



This preview shows how the YUV color 203.8600, -0.9170, 14.1548 looks on a white background.

Color Contrast Check

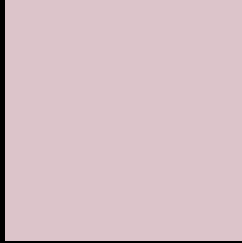
Large Text (above 18pt) WCAG AA × Fail

Any Text WCAG AA × Fail

Large Text (above 18pt) WCAG AAA × Fail

Any Text WCAG AAA × Fail

Black Background



This preview shows how the YUV color 203.8600, -0.9170, 14.1548 looks on a black background.

Color Contrast Check

Large Text (above 18pt) WCAG AA ✓ Pass

Any Text WCAG AA ✓ Pass

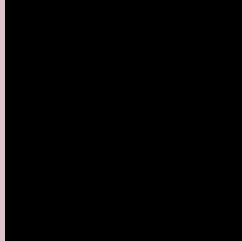
Large Text (above 18pt) WCAG AAA ✓ Pass

Any Text WCAG AAA ✓ Pass

If you want to check with other color combinations, try the [Color Contrast Checker](#).

YUV 203.8600, -0.9170, 14.1548

Background



This preview shows how black text looks on a background with the YUV color 203.8600, -0.9170, 14.1548.



This preview shows how white text looks on a background with the YUV color 203.8600, -0.9170,

Color Blindness Simulation

Color vision deficiency is a very complex topic, and I could not describe the different causes any better than Wikipedia does, so if you want to learn more, you should check out their [article about color blindness](#).

Dichromacy



Original Color

203.8600, -0.9170, 14.1548

Protanopia

202.6520, 1.1576, 2.0592

Deuteranopia

204.1590, -1.0644, 14.7696



Tritanopia

204.4840, 2.7194, 14.4845

Trichromacy



Original Color

203.8600, -0.9170, 14.1548

Protanomaly

202.8590, 0.5625, 6.2627

Deuteranomaly

204.1590, -1.0644, 14.7696

Tritanomaly

204.1420, 1.4090, 14.7845

Monochromacy



Original Color

203.8600, -0.9170, 14.1548

Achromatopsia

204.0000, 0.0000, 0.0000

Achromatomaly

203.9190, -0.4531, 5.3330

CSS Examples

Text

The CSS property to change the color of the text to YUV 203.8600, -0.9170, 14.1548 is called "color". The color property can be set on classes, ids or directly on the HTML element.

This example shows how text in the color `rgb(220, 196, 202)` looks like.

```
.text, #text, p{  
    color:rgb(220, 196, 202)  
}
```

If you want to add a text shadow in that color use the text-shadow property, you can generate a text shadow directly with our [CSS Text Shadow Generator](#).

Here you see how black text with a 4 pixel rgb(220, 196, 202) colored shadow looks like.

```
.shadow{ text-shadow: 4px 4px 2px rgb(220, 196, 202) }
```

Border

The CSS property to change the border of an element to YUV 203.8600, -0.9170, 14.1548 is called "border". The border property can be set on classes, ids or directly on the HTML element.

This example shows the color as border, it can be applied via the CSS property "border" or "border-color".

```
.border, #border, table{ border:4px solid rgb(220, 196, 202) }
```


If only the border color should be changed use the property `border-color`.

```
.border{ border-color:rgb(220, 196, 202) }
```

If you want to add a box shadow in that color use:

Here you see how a box with a 4 pixel `rgb(220, 196, 202)` colored shadow looks like.

```
.boxshadow{ -moz-box-shadow:4px 4px 4px  
4px rgb(220, 196, 202); -webkit-box-  
shadow:4px 4px 4px 4px rgb(220, 196, 202);  
box-shadow:4px 4px 4px 4px rgb(220, 196,  
202) }
```

Background

The CSS property to change the background color of an element to YUV 203.8600, -0.9170, 14.1548 is called "background". The background property can be set on classes, ids or directly on the HTML element.

```
.background, #background, body{  
background: rgb(220, 196, 202) }
```

If only the background color should be changed can be used:

```
.background{ background-color: rgb(220,  
196, 202) }
```

This example shows the color as background, it is applied via the CSS property "background".

To optimize and compress your CSS code, you can use our [online CSS compressor and optimizer](#) based on csstidy. If you want to create a linear or radial gradient as background or border, check our [CSS Gradient Generator](#).

Hey! You found this booklet interesting? Support Converting Colors with the new Membership Option!

The pro membership hides all ads, plus gives you double the colors in the color bucket, and more awesome pro features!

[Learn more, Memberships starting at \\$2.50/m!](#)

**Follow me
on Twitter!**

@ConvertingColor