

Converting Colors

YUV(204.2130, 0.3880, 15.5992)

Have a look what the booklet for
YUV(204.2130, 0.3880, 15.5992)
contains.

YUV(204.2130, 0.3880, 15.5992)	3
<i>Conversions</i>	4
<i>Details</i>	6
<i>Harmonies</i>	12
<i>Previews</i>	24
<i>Color Blindness Simulation</i>	28
<i>CSS Examples</i>	31

Color

**YUV(204.2130, 0.3880,
15.5992)**

Conversions

Conversions Part 1

Format	Color
Hex	DEC3CD
RGB	222, 195, 205
RGB Percent	87%, 76%, 80%
CMY	0.1294, 0.2353, 0.1961
CMYK	0.00, 0.12, 0.08, 0.13
HSL	338°, 29%, 82%
HSV	338°, 12%, 87%
XYZ	60.6588, 58.9676, 65.9424
YIQ	204.2130, 12.8820, 8.8340

Conversions

Conversions Part 2

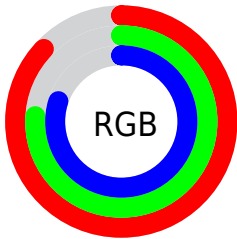
Format	Color
R _Y B	222, 195, 205
Decimal	14599117
CIE Lab	81.27, 11.20, -1.50
CIE LCh	81, 11.298, 352.377
Yxy	58.9676, 0.3269, 0.3178
Android (android.graphics.Color)	4292789197 (0xFFDEC3CD)
YUV	204.2130, 0.3880, 15.5992
Hunter-Lab	76.7904, 6.6188, 2.8390

Details

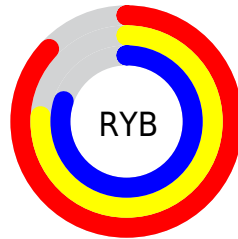
The YUV color $204.2130, 0.3880, 15.5992$ is a light color, and the websafe version is hex `CCCCCC`. A complement of this color would be $212.7870, -0.3880, -15.5992$, and the grayscale version is $204.0000, 0.0000, 0.0000$.

A 20% lighter version of the original color is $253.2390, 0.8682, 1.5444$, and $149.9140, 0.5354, 14.9844$ is the 20% darker color. If you saturate the color by 10%, you get $189.7030, 0.6394, 28.3245$, and if you desaturate by 10%, it is $218.7230, 0.1366, 2.8739$.

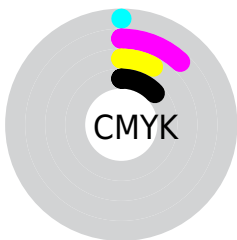
Distribution



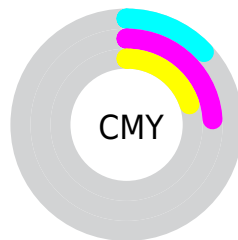
- Red (87%)
- Green (76%)
- Blue (80%)



- Red (87%)
- Yellow (76%)
- Blue (80%)



- Cyan (0%)
- Magenta (12%)
- Yellow (8%)
- Black (13%)



- Cyan (13%)
- Magenta (24%)
- Yellow (20%)

Brightness & Saturation Gradients

These gradients show how the YUV color 204.2130, 0.3880, 15.5992 changes by changing the brightness by 10 percent. The first figure shows a shift by +10% for each color and the second figure -10%.

Similar to the brightness gradients but the following saturation gradients show a change of the YUV color 204.2130, 0.3880, 15.5992 by changing the saturation by 10% instead.

■ 204.2130, 0.3880,
15.5992

■ 204.2130, 0.3880,
15.5992

255.0000, 0.0000,
0.0000

■ 176.9140, 0.5354,
14.9844

■ 253.2390, 0.8682,
1.5444

■ 149.9140, 0.5354,
14.9844

■ 124.2020, 0.3934,
13.8548

■ 99.2020, 0.3934,
13.8548

■ 75.4900, 0.2514,
12.7253

■ 52.3050, 0.8356,
12.0105

■ 30.8920, 0.5462,

11.4957

■ 8.5010, 0.2460,
14.4696

■ 0.0000, 0.0000,
0.0000

■ 204.2130, 0.3880,
15.5992

■ 204.2130, 0.3880,
15.5992

■ 189.7030, 0.6394,
28.3245

■ 218.7230, 0.1366,
2.8739

■ 175.1930, 0.8909,
41.0497

■ 233.2330, -0.1149,
-9.8513

■ 160.0960, 1.4317,
54.2898

■ 244.2210, 1.3700,
-19.4878

■ 145.5860, 1.6831,
67.0151

■ 245.1330, 4.8644,
-20.2876

■ 131.0760, 1.9345,
79.7403

■ 116.5660, 2.1860,
92.4656

■ 102.0560, 2.4374,
105.1909

■ 86.9590, 2.9782,
118.4310

■ 75.7260, 3.0931,
128.2823

Harmonies

Analogous

The Analogous color harmony consists of three colors that are next to each other on the color wheel.



203.8360, 5.5039, 8.0368



204.2130, 0.3880, 15.5992



203.8560, -4.8590, 18.5433

Triad

The Triadic color harmony groups three colors that are evenly spaced from another and form a triangle on the color wheel.



204.2130, 0.3880, 15.5992



200.8940, -9.3147, 0.9700



199.5830, 9.0796, -18.9283

Complementary

The Complementary color scheme is a pair of colors which are on the opposite of each other on the color wheel.



204.2130, 0.3880, 15.5992



212.7870, -0.3880, -15.5992

Split Complementary

Split-complementary colors differ from the complementary color scheme. The scheme consists of three colors, the original color and two neighbors of the complement color.



198.5460, 5.1538, -19.7728



204.2130, 0.3880, 15.5992



199.8650, -5.3564, -8.6516

Square

The Square scheme is like the rectangle color scheme, but the four colors are evenly spaced on the color wheel.



204.2130, 0.3880, 15.5992



202.0200, -10.3629, 10.5065



198.6020, 0.1962, -16.3140



201.3820, 10.6577, -11.7360

Rectangle

The Rectangle color scheme consists of four colors that form a rectangle on the color wheel.



204.2130, 0.3880, 15.5992



203.4600, -7.6218, 18.0136



198.6020, 0.1962, -16.3140



199.0560, 8.3534, -19.3431

Sweetspot

The Sweet Spot groups the original color and five complimentary colors.



204.2130, 0.3880, 15.5992



248.4460, 0.2731, 5.7479



203.1610, 9.2876, 7.7518



123.3210, -0.1583, 4.1035



0.0000, 0.0000, 0.0000



128.0000, 0.0000, 0.0000

Same Dimension

The Same Dimension uses a secret algorithm to generate beautiful new colors.



204.2130, 0.3880, 15.5992



229.9580, 0.5137, 21.9618



204.8340, -4.8482, 15.0546



104.7450, 0.1257, 6.3626



60.0340, 2.4482, 101.7022



16.4040, 0.7868, 27.7097

Inverse Universe

The Inverse Universe completely reimagines the original color for something new.



204.2130, 0.3880, 15.5992



229.9580, 0.5137, 21.9618



212.1660, 4.8482, -15.0546



104.7450, 0.1257, 6.3626



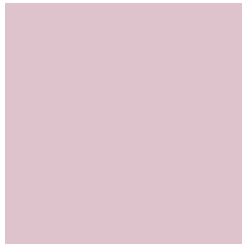
60.0340, 2.4482, 101.7022



16.4040, 0.7868, 27.7097

Previews

White Background



This preview shows how the YUV color 204.2130, 0.3880, 15.5992 looks on a white background.

Color Contrast Check

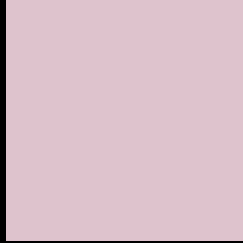
Large Text (above 18pt) WCAG AA × Fail

Any Text WCAG AA × Fail

Large Text (above 18pt) WCAG AAA × Fail

Any Text WCAG AAA × Fail

Black Background



This preview shows how the YUV color 204.2130, 0.3880, 15.5992 looks on a black background.

Color Contrast Check

Large Text (above 18pt) WCAG AA ✓ Pass

Any Text WCAG AA ✓ Pass

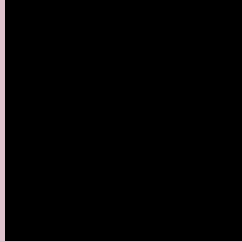
Large Text (above 18pt) WCAG AAA ✓ Pass

Any Text WCAG AAA ✓ Pass

If you want to check with other color combinations, try the [Color Contrast Checker](#).

YUV 204.2130, 0.3880, 15.5992

Background



This preview shows how black text looks on a background with the YUV color 204.2130, 0.3880, 15.5992.



This preview shows how white text looks on a background with the YUV color 204.2130, 0.3880,

Color Blindness Simulation

Color vision deficiency is a very complex topic, and I could not describe the different causes any better than Wikipedia does, so if you want to learn more, you should check out their [article about color blindness](#).

Dichromacy



Original Color

204.2130, 0.3880, 15.5992

Protanopia

202.6950, 2.6154, 1.1445

Deuteranopia

204.2020, 0.3934, 13.8548



Tritanopia

204.3810, 2.2772, 16.3289

Trichromacy



Original Color

204.2130, 0.3880, 15.5992

Protanomaly

203.5000, 1.7255, 6.5775

Deuteranomaly

204.5010, 0.2460, 14.4696

Tritanomaly

204.2670, 1.8404, 16.4288

Monochromacy



Original Color

204.2130, 0.3880, 15.5992

Achromatopsia

204.0000, 0.0000, 0.0000

Achromatomaly

204.3320, -0.1637, 5.8478

CSS Examples

Text

The CSS property to change the color of the text to YUV 204.2130, 0.3880, 15.5992 is called "color". The color property can be set on classes, ids or directly on the HTML element.

This example shows how text in the color `rgb(222, 195, 205)` looks like.

```
.text, #text, p{  
    color:rgb(222, 195, 205)  
}
```

If you want to add a text shadow in that color use the text-shadow property, you can generate a text shadow directly with our [CSS Text Shadow Generator](#).

Here you see how black text with a 4 pixel rgb(222, 195, 205) colored shadow looks like.

```
.shadow{ text-shadow: 4px 4px 2px rgb(222, 195, 205) }
```

Border

The CSS property to change the border of an element to YUV 204.2130, 0.3880, 15.5992 is called "border". The border property can be set on classes, ids or directly on the HTML element.

This example shows the color as border, it can be applied via the CSS property "border" or "border-color".

```
.border, #border, table{ border:4px solid rgb(222, 195, 205) }
```


If only the border color should be changed use the property `border-color`.

```
.border{ border-color:rgb(222, 195, 205) }
```

If you want to add a box shadow in that color use:

Here you see how a box with a 4 pixel `rgb(222, 195, 205)` colored shadow looks like.

```
.boxshadow{ -moz-box-shadow:4px 4px 4px  
4px rgb(222, 195, 205); -webkit-box-  
shadow:4px 4px 4px 4px rgb(222, 195, 205);  
box-shadow:4px 4px 4px 4px rgb(222, 195,  
205) }
```

Background

The CSS property to change the background color of an element to YUV 204.2130, 0.3880, 15.5992 is called "background". The background property can be set on classes, ids or directly on the HTML element.

```
.background, #background, body{  
background: rgb(222, 195, 205) }
```

If only the background color should be changed can be used:

```
.background{ background-color: rgb(222,  
195, 205) }
```

This example shows the color as background, it is applied via the CSS property "background".

To optimize and compress your CSS code, you can use our [online CSS compressor and optimizer](#) based on csstidy. If you want to create a linear or radial gradient as background or border, check our [CSS Gradient Generator](#).

Hey! You found this booklet interesting? Support Converting Colors with the new Membership Option!

The pro membership hides all ads, plus gives you double the colors in the color bucket, and more awesome pro features!

[Learn more, Memberships starting at \\$2.50/m!](#)

**Follow me
on Twitter!**

@ConvertingColor