

Converting Colors

YUV(204.3650, -16.9419,
20.7279)

Have a look what the booklet for
YUV(204.3650, -16.9419, 20.7279)
contains.

YUV(204.3650, -16.9419, 20.7279)	3
<i>Conversions</i>	4
<i>Details</i>	6
<i>Harmonies</i>	12
<i>Previews</i>	24
<i>Color Blindness Simulation</i>	28
<i>CSS Examples</i>	31

Color

**YUV(204.3650, -16.9419,
20.7279)**

Conversions

Conversions Part 1

Format	Color
Hex	E4C7AA
RGB	228, 199, 170
RGB Percent	89%, 78%, 67%
CMY	0.1059, 0.2196, 0.3333
CMYK	0.00, 0.13, 0.25, 0.11
HSL	30°, 52%, 78%
HSV	30°, 25%, 89%
XYZ	59.6740, 60.2431, 46.5131
YIQ	204.3650, 26.5930, -2.8710

Conversions

Conversions Part 2

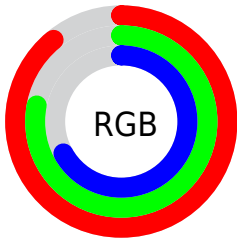
Format	Color
R _Y B	228, 228, 170
Decimal	14993322
CIE Lab	81.97, 5.85, 18.29
CIE LCh	82, 19.202, 72.248
Yxy	60.2431, 0.3586, 0.3620
Android (android.graphics.Color)	4293183402 (0xFFE4C7AA)
YUV	204.3650, -16.9419, 20.7279
Hunter-Lab	77.6164, 1.4078, 18.8008

Details

The YUV color $204.3650, -16.9419, 20.7279$ is a light color, and the websafe version is hex FFCC99 . A complement of this color would be $193.6350, 16.9419, -20.7279$, and the grayscale version is $205.0000, 0.0000, 0.0000$.

A 20% lighter version of the original color is $251.5800, -13.1039, 2.9993$, and $149.9950, -15.7735, 19.2984$ is the 20% darker color. If you saturate the color by 10%, you get $195.2860, -23.8050, 28.6902$, and if you desaturate by 10%, it is $213.4440, -10.0789, 12.7656$.

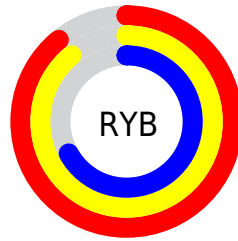
Distribution



Red (89%)

Green (78%)

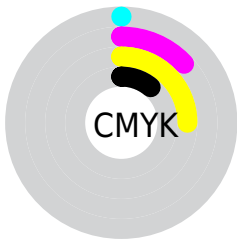
Blue (67%)



Red (89%)

Yellow (89%)

Blue (67%)

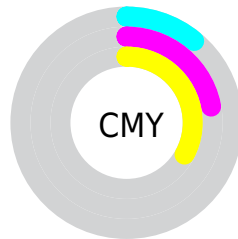


Cyan (0%)

Magenta (13%)

Yellow (25%)

Black (11%)



Cyan (11%)

Magenta (22%)

Yellow (33%)

Brightness & Saturation Gradients

These gradients show how the YUV color 204.3650, -16.9419, 20.7279 changes by changing the brightness by 10 percent. The first figure shows a shift by +10% for each color and the second figure -10%.

Similar to the brightness gradients but the following saturation gradients show a change of the YUV color 204.3650, -16.9419, 20.7279 by changing the saturation by 10% instead.

■ 204.3650,
-16.9419, 20.7279

■ 204.3650,
-16.9419, 20.7279

255.0000, 0.0000,
0.0000

■ 177.0660,
-16.7945, 20.1131

■ 251.5800,
-13.1039, 2.9993

■ 149.9950,
-15.7735, 19.2984

254.8860, -0.4368,
0.1000

■ 124.3970,
-15.4787, 18.0688

■ 99.2120, -14.8945,
17.3541

■ 74.8420, -13.7261,
15.9246

■ 52.2440, -13.4313,
14.6950

■ 30.1900, -14.8837,

13.8654

■ 7.7520, -3.8217,
12.4955

■ 0.0000, 0.0000,
0.0000

■ 204.3650,
-16.9419, 20.7279

■ 204.3650,
-16.9419, 20.7279

■ 195.2860,
-23.8050, 28.6902

■ 213.4440,
-10.0789, 12.7656

■ 185.6200,
-30.3787, 37.1673

■ 223.1100, -3.5052,
4.2885

■ 176.6550,
-36.8049, 45.0296

■ 232.0750, 2.9210,
-3.5738

■ 166.9890,
-43.3786, 53.5066

■ 241.0570, 6.8739,
-11.4510

■ 157.9100,
-50.2416, 61.4689

■ 246.9270, 3.9800,
-16.5990

■ 148.8310,
-57.1047, 69.4312

■ 139.1650,
-63.6783, 77.9083

■ 135.0900,
-66.5994, 81.4821

Harmonies

Analogous

The Analogous color harmony consists of three colors that are next to each other on the color wheel.



205.8590, -12.7485, 29.0647



204.3650, -16.9419, 20.7279



202.3910, -16.4618, 6.6731

Triad

The Triadic color harmony groups three colors that are evenly spaced from another and form a triangle on the color wheel.



204.3650, -16.9419, 20.7279



196.9140, 6.9444, -34.1276



206.5570, 12.0504, 8.2815

Complementary

The Complementary color scheme is a pair of colors which are on the opposite of each other on the color wheel.



204.3650, -16.9419, 20.7279



193.6350, 16.9419, -20.7279

Split Complementary

Split-complementary colors differ from the complementary color scheme. The scheme consists of three colors, the original color and two neighbors of the complement color.



204.1140, 17.1988, -9.7470



204.3650, -16.9419, 20.7279



198.1510, 14.2226, -35.2124

Square

The Square scheme is like the rectangle color scheme, but the four colors are evenly spaced on the color wheel.



204.3650, -16.9419, 20.7279



197.7490, -2.8343, -24.3359



200.9440, 18.2686, -26.2609



207.1800, 3.8553, 23.5211

Rectangle

The Rectangle color scheme consists of four colors that form a rectangle on the color wheel.



204.3650, -16.9419, 20.7279



201.3080, -13.9558, -3.7781



200.9440, 18.2686, -26.2609



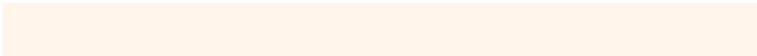
205.9800, 13.8139, 2.6485

Sweetspot

The Sweet Spot groups the original color and five complimentary colors.



204.3650, -16.9419, 20.7279



246.8500, -5.8420, 7.1476



190.6480, 4.1175, 32.7577



122.4090, -3.6526, 4.9033



0.0000, 0.0000, 0.0000



128.0000, 0.0000, 0.0000

Same Dimension

The Same Dimension uses a secret algorithm to generate beautiful new colors.



204.3650, -16.9419, 20.7279



222.5140, -22.9314, 28.4902



221.3880, -25.3343, 5.7987



110.1100, -3.5052, 4.2885



105.7640, -52.1417, 64.2280



30.5110, -15.0419, 17.9689

Inverse Universe

The Inverse Universe completely reimagines the original color for something new.



193.6350, 16.9419, -20.7279



207.8990, 23.2208, -27.9754



176.6120, 25.3343, -5.7987



107.8900, 3.5052, -4.2885



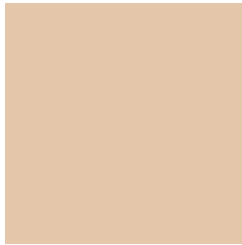
72.6490, 52.4310, -63.7132



21.0760, 14.7525, -18.4837

Previews

White Background



This preview shows how the YUV color 204.3650, -16.9419, 20.7279 looks on a white background.

Color Contrast Check

Large Text (above 18pt) WCAG AA × Fail

Any Text WCAG AA × Fail

Large Text (above 18pt) WCAG AAA × Fail

Any Text WCAG AAA × Fail

Black Background



This preview shows how the YUV color 204.3650, -16.9419, 20.7279 looks on a black background.

Color Contrast Check

Large Text (above 18pt) WCAG AA ✓ Pass

Any Text WCAG AA ✓ Pass

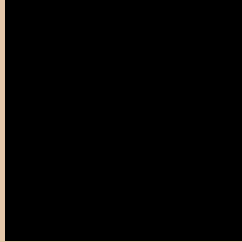
Large Text (above 18pt) WCAG AAA ✓ Pass

Any Text WCAG AAA ✓ Pass

If you want to check with other color combinations, try the [Color Contrast Checker](#).

YUV 204.3650, -16.9419, 20.7279

Background



This preview shows how black text looks on a background with the YUV color 204.3650, -16.9419, 20.7279.



This preview shows how white text looks on a background with the YUV color 204.3650, -16.9419, 20.7279.

Color Blindness Simulation

Color vision deficiency is a very complex topic, and I could not describe the different causes any better than Wikipedia does, so if you want to learn more, you should check out their [article about color blindness](#).

Dichromacy



Original Color

204.3650, -16.9419, 20.7279

Protanopia

203.0540, -15.3096, 10.4766

Deuteranopia

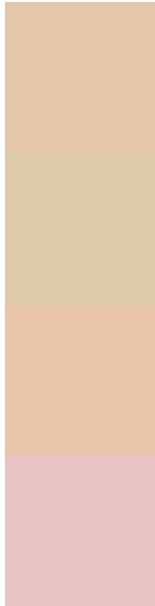
204.8110, -16.6688, 26.4758



Tritanopia

207.3710, 0.8031, 22.4766

Trichromacy



Original Color

204.3650, -16.9419, 20.7279

Protanomaly

203.8480, -16.1941, 14.1653

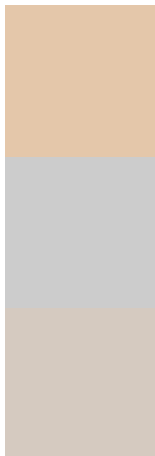
Deuteranomaly

204.5010, -16.5160, 24.1166

Tritanomaly

206.3510, -5.5960, 21.6172

Monochromacy



Original Color

204.3650, -16.9419, 20.7279

Achromatopsia

204.0000, 0.0000, 0.0000

Achromatomaly

204.1490, -5.9895, 7.7623

CSS Examples

Text

The CSS property to change the color of the text to YUV 204.3650, -16.9419, 20.7279 is called "color". The color property can be set on classes, ids or directly on the HTML element.

This example shows how text in the color `rgb(228, 199, 170)` looks like.

```
.text, #text, p{  
    color:rgb(228, 199, 170)  
}
```

If you want to add a text shadow in that color use the text-shadow property, you can generate a text shadow directly with our [CSS Text Shadow Generator](#).

Here you see how black text with a 4 pixel rgb(228, 199, 170) colored shadow looks like.

```
.shadow{ text-shadow: 4px 4px 2px rgb(228, 199, 170) }
```

Border

The CSS property to change the border of an element to YUV 204.3650, -16.9419, 20.7279 is called "border".

The border property can be set on classes, ids or directly on the HTML element.

This example shows the color as border, it can be applied via the CSS property "border" or "border-color".

```
.border, #border, table{ border:4px solid rgb(228, 199, 170) }
```


If only the border color should be changed use the property `border-color`.

```
.border{ border-color:rgb(228, 199, 170) }
```

If you want to add a box shadow in that color use:

Here you see how a box with a 4 pixel `rgb(228, 199, 170)` colored shadow looks like.

```
.boxshadow{ -moz-box-shadow:4px 4px 4px  
4px rgb(228, 199, 170); -webkit-box-  
shadow:4px 4px 4px 4px rgb(228, 199, 170);  
box-shadow:4px 4px 4px 4px rgb(228, 199,  
170) }
```

Background

The CSS property to change the background color of an element to YUV 204.3650, -16.9419, 20.7279 is called "background". The background property can be set on classes, ids or directly on the HTML element.

```
.background, #background, body{  
background: rgb(228, 199, 170) }
```

If only the background color should be changed can be used:

```
.background{ background-color: rgb(228,  
199, 170) }
```

This example shows the color as background, it is applied via the CSS property "background".

To optimize and compress your CSS code, you can use our [online CSS compressor and optimizer](#) based on csstidy. If you want to create a linear or radial gradient as background or border, check our [CSS Gradient Generator](#).

Hey! You found this booklet interesting? Support Converting Colors with the new Membership Option!

The pro membership hides all ads, plus gives you double the colors in the color bucket, and more awesome pro features!

[Learn more, Memberships starting at \\$2.50/m!](#)

**Follow me
on Twitter!**

@ConvertingColor