

Converting Colors

YUV(204.7420, -5.2958,
18.6433)

Have a look what the booklet for
YUV(204.7420, -5.2958, 18.6433)
contains.

YUV(204.7420, -5.2958, 18.6433)	3
<i>Conversions</i>	4
<i>Details</i>	6
<i>Harmonies</i>	12
<i>Previews</i>	24
<i>Color Blindness Simulation</i>	28
<i>CSS Examples</i>	31

Color

**YUV(204.7420, -5.2958,
18.6433)**

Conversions

Conversions Part 1

Format	Color
Hex	E2C4C2
RGB	226, 196, 194
RGB Percent	89%, 77%, 76%
CMY	0.1137, 0.2314, 0.2392
CMYK	0.00, 0.13, 0.14, 0.11
HSL	4°, 36%, 82%
HSV	4°, 14%, 89%
XYZ	60.8416, 59.5436, 59.3253
YIQ	204.7420, 18.5220, 5.7380

Conversions

Conversions Part 2

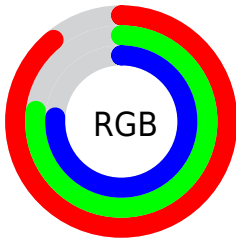
Format	Color
R _Y B	226, 196, 194
Decimal	14861506
CIE Lab	81.59, 10.27, 4.91
CIE LCh	82, 11.381, 25.536
Yxy	59.5436, 0.3386, 0.3313
Android (android.graphics.Color)	4293051586 (0xFFE2C4C2)
YUV	204.7420, -5.2958, 18.6433
Hunter-Lab	77.1645, 5.7031, 8.4321

Details

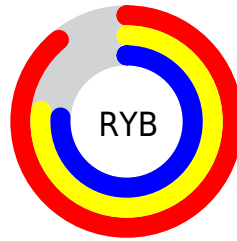
The YUV color $204.7420, -5.2958, 18.6433$ is a light color, and the websafe version is hex FFCCCC . A complement of this color would be $215.2580, 5.2958, -18.6433$, and the grayscale version is $205.0000, 0.0000, 0.0000$.

A 20% lighter version of the original color is $253.2560, -1.6052, 1.5295$, and $150.1440, -5.0010, 17.4137$ is the 20% darker color. If you saturate the color by 10%, you get $189.7930, -9.2649, 31.7535$, and if you desaturate by 10%, it is $219.6910, -1.3267, 5.5330$.

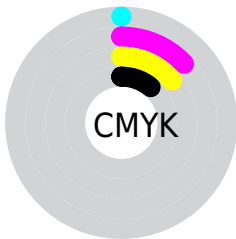
Distribution



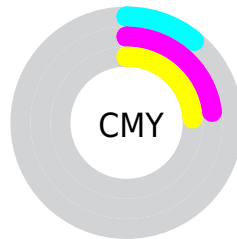
- Red (89%)
- Green (77%)
- Blue (76%)



- Red (89%)
- Yellow (77%)
- Blue (76%)



- Cyan (0%)
- Magenta (13%)
- Yellow (14%)
- Black (11%)



- Cyan (11%)
- Magenta (23%)
- Yellow (24%)

Brightness & Saturation Gradients

These gradients show how the YUV color 204.7420, -5.2958, 18.6433 changes by changing the brightness by 10 percent. The first figure shows a shift by +10% for each color and the second figure -10%.

Similar to the brightness gradients but the following saturation gradients show a change of the YUV color 204.7420, -5.2958, 18.6433 by changing the saturation by 10% instead.

 204.7420, -5.2958,
18.6433

 204.7420, -5.2958,
18.6433


255.0000, 0.0000,
0.0000


 177.4430, -5.1484,
18.0285


 253.2560, -1.6052,
1.5295

 150.1440, -5.0010,
17.4137

 124.8450, -4.8536,
16.7989

 99.5460, -4.7062,
16.1842

 75.3610, -4.1220,
15.4694

 52.7630, -3.8272,
14.2398

 31.1650, -3.5323,

13.0103

■ 8.0730, -3.9800,
16.5990

■ 0.0000, 0.0000,
0.0000

■ 204.7420, -5.2958,
18.6433

■ 204.7420, -5.2958,
18.6433

■ 189.7930, -9.2649,
31.7535

■ 219.6910, -1.3267,
5.5330

■ 174.9580,
-12.7973, 44.7638

■ 234.5260, 2.2057,
-7.4773

■ 159.4220,
-16.4770, 58.3889

■ 246.3290, 4.2748,
-17.8285

■ 144.5870,
-20.0094, 71.3992

■ 129.6380,
-23.9785, 84.5095

■ 114.6890,
-27.9477, 97.6197

■ 99.8540, -31.4800,
110.6300

■ 84.9050, -35.4492,
123.7403

■ 75.7920, -37.3655,
131.7324

Harmonies

Analogous

The Analogous color harmony consists of three colors that are next to each other on the color wheel.



205.3980, -0.1962, 16.3140



204.7420, -5.2958, 18.6433



203.8080, -8.7793, 15.9544

Triad

The Triadic color harmony groups three colors that are evenly spaced from another and form a triangle on the color wheel.



204.7420, -5.2958, 18.6433



200.2670, -5.0616, -9.8812



202.0940, 10.7997, -10.6064

Complementary

The Complementary color scheme is a pair of colors which are on the opposite of each other on the color wheel.



204.7420, -5.2958, 18.6433



215.2580, 5.2958, -18.6433

Split Complementary

Split-complementary colors differ from the complementary color scheme. The scheme consists of three colors, the original color and two neighbors of the complement color.



200.4090, 9.6584, -17.8987



204.7420, -5.2958, 18.6433



199.4170, 0.7804, -17.0287

Square

The Square scheme is like the rectangle color scheme, but the four colors are evenly spaced on the color wheel.



204.7420, -5.2958, 18.6433



201.5950, -9.1673, 0.3552



199.3610, 5.7380, -20.4876



203.9920, 8.8779, -0.8700

Rectangle

The Rectangle color scheme consists of four colors that form a rectangle on the color wheel.



204.7420, -5.2958, 18.6433



203.0310, -10.3683, 12.2508



199.3610, 5.7380, -20.4876



201.3710, 10.6631, -13.4804

Sweetspot

The Sweet Spot groups the original color and five complimentary colors.



204.7420, -5.2958, 18.6433



247.9900, -1.4741, 6.1478



206.9880, 8.3869, 16.6735



123.6800, -1.3212, 3.7886



0.0000, 0.0000, 0.0000



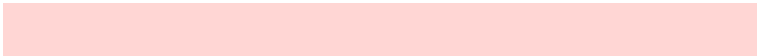
128.0000, 0.0000, 0.0000

Same Dimension

The Same Dimension uses a secret algorithm to generate beautiful new colors.



204.7420, -5.2958, 18.6433



226.0310, -6.9173, 25.4058



214.1340, -9.9261, 10.4065



104.8760, -1.9109, 6.2477



59.0810, -29.1269, 102.5380



16.1130, -7.9437, 27.9649

Inverse Universe

The Inverse Universe completely reimagines the original color for something new.



215.2580, 5.2958, -18.6433



240.3820, 7.2067, -24.8910



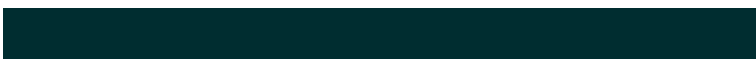
205.8660, 9.9261, -10.4065



108.1240, 1.9109, -6.2477



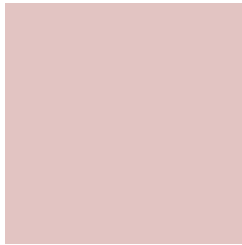
116.9190, 29.1269, -102.5380



31.8870, 7.9437, -27.9649

Previews

White Background



This preview shows how the YUV color 204.7420, -5.2958, 18.6433 looks on a white background.

Color Contrast Check

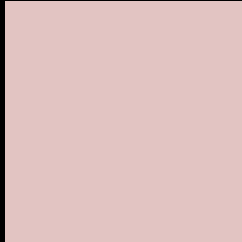
Large Text (above 18pt) WCAG AA × Fail

Any Text WCAG AA × Fail

Large Text (above 18pt) WCAG AAA × Fail

Any Text WCAG AAA × Fail

Black Background



This preview shows how the YUV color 204.7420, -5.2958, 18.6433 looks on a black background.

Color Contrast Check

Large Text (above 18pt) WCAG AA ✓ Pass

Any Text WCAG AA ✓ Pass

Large Text (above 18pt) WCAG AAA ✓ Pass

Any Text WCAG AAA ✓ Pass

If you want to check with other color combinations, try the [Color Contrast Checker](#).

YUV 204.7420, -5.2958, 18.6433

Background



This preview shows how black text looks on a background with the YUV color 204.7420, -5.2958, 18.6433.

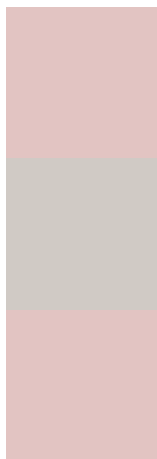


This preview shows how white text looks on a background with the YUV color 204.7420, -5.2958,

Color Blindness Simulation

Color vision deficiency is a very complex topic, and I could not describe the different causes any better than Wikipedia does, so if you want to learn more, you should check out their [article about color blindness](#).

Dichromacy



Original Color

204.7420, -5.2958, 18.6433

Protanopia

203.2240, -3.0684, 4.1886

Deuteranopia

204.7420, -5.2958, 18.6433



Tritanopia

205.8760, 1.5401, 19.4027

Trichromacy



Original Color

204.7420, -5.2958, 18.6433

Protanomaly

204.0290, -3.9583, 9.6216

Deuteranomaly

204.7420, -5.2958, 18.6433

Tritanomaly

205.5940, -0.7858, 18.7731

Monochromacy



Original Color

204.7420, -5.2958, 18.6433

Achromatopsia

205.0000, 0.0000, 0.0000

Achromatomaly

205.1750, -2.0583, 6.8625

CSS Examples

Text

The CSS property to change the color of the text to YUV 204.7420, -5.2958, 18.6433 is called "color". The color property can be set on classes, ids or directly on the HTML element.

This example shows how text in the color `rgb(226, 196, 194)` looks like.

```
.text, #text, p{  
    color:rgb(226, 196, 194)  
}
```

If you want to add a text shadow in that color use the text-shadow property, you can generate a text shadow directly with our [CSS Text Shadow Generator](#).

Here you see how black text with a 4 pixel rgb(226, 196, 194) colored shadow looks like.

```
.shadow{ text-shadow: 4px 4px 2px rgb(226, 196, 194) }
```

Border

The CSS property to change the border of an element to YUV 204.7420, -5.2958, 18.6433 is called "border". The border property can be set on classes, ids or directly on the HTML element.

This example shows the color as border, it can be applied via the CSS property "border" or "border-color".

```
.border, #border, table{ border:4px solid rgb(226, 196, 194) }
```


If only the border color should be changed use the property `border-color`.

```
.border{ border-color:rgb(226, 196, 194) }
```

If you want to add a box shadow in that color use:

Here you see how a box with a 4 pixel `rgb(226, 196, 194)` colored shadow looks like.

```
.boxshadow{ -moz-box-shadow:4px 4px 4px 4px rgb(226, 196, 194); -webkit-box-shadow:4px 4px 4px 4px rgb(226, 196, 194); box-shadow:4px 4px 4px 4px rgb(226, 196, 194) }
```

Background

The CSS property to change the background color of an element to YUV 204.7420, -5.2958, 18.6433 is called "background". The background property can be set on classes, ids or directly on the HTML element.

```
.background, #background, body{  
background: rgb(226, 196, 194) }
```

If only the background color should be changed can be used:

```
.background{ background-color: rgb(226,  
196, 194) }
```

This example shows the color as background, it is applied via the CSS property "background".

To optimize and compress your CSS code, you can use our [online CSS compressor and optimizer](#) based on csstidy. If you want to create a linear or radial gradient as background or border, check our [CSS Gradient Generator](#).

Hey! You found this booklet interesting? Support Converting Colors with the new Membership Option!

The pro membership hides all ads, plus gives you double the colors in the color bucket, and more awesome pro features!

[Learn more, Memberships starting at \\$2.50/m!](#)

**Follow me
on Twitter!**

@ConvertingColor