

Converting Colors

YUV(205.1030, -12.8688,
20.9577)

Have a look what the booklet for
YUV(205.1030, -12.8688, 20.9577)
contains.

YUV(205.1030, -12.8688, 20.9577)	3
<i>Conversions</i>	4
<i>Details</i>	6
<i>Harmonies</i>	12
<i>Previews</i>	24
<i>Color Blindness Simulation</i>	28
<i>CSS Examples</i>	31

Color

**YUV(205.1030, -12.8688,
20.9577)**

Conversions

Conversions Part 1	
Format	Color
Hex	E5C6B3
RGB	229, 198, 179
RGB Percent	90%, 78%, 70%
CMY	0.1020, 0.2235, 0.2980
CMYK	0.00, 0.14, 0.22, 0.10
HSL	23°, 49%, 80%
HSV	23°, 22%, 90%
XYZ	60.6439, 60.3009, 51.0908
YIQ	205.1030, 24.5750, 0.6630

Conversions

Conversions Part 2

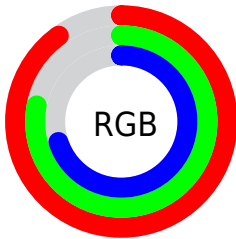
Format	Color
RYB	229, 210, 179
Decimal	15058611
CIELab	82.00, 8.03, 13.55
CIELCh	82, 15.752, 59.365
Yxy	60.3009, 0.3525, 0.3505
Android (android.graphics.Color)	4293248691 (0xFFE5C6B3)
YUV	205.1030, -12.8688, 20.9577
Hunter-Lab	77.6536, 3.5063, 15.3488

Details

The YUV color **205.1030, -12.8688, 20.9577** is a light color, and the websafe version is hex **FFCCCC**. A complement of this color would be **202.8970, 12.8688, -20.9577**, and the grayscale version is **205.0000, 0.0000, 0.0000**.

A 20% lighter version of the original color is **252.7200, -8.7360, 1.9996**, and **150.6190, -12.1372, 19.6281** is the 20% darker color. If you saturate the color by 10%, you get **194.2630, -18.8637, 30.4643**, and if you desaturate by 10%, it is **215.9430, -6.8739, 11.4510**.

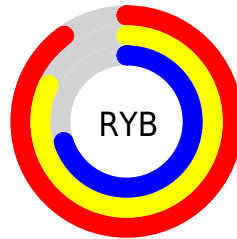
Distribution



Red (90%)

Green (78%)

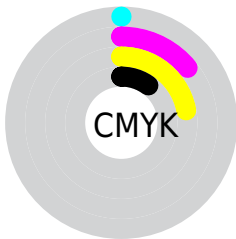
Blue (70%)



Red (90%)

Yellow (82%)

Blue (70%)

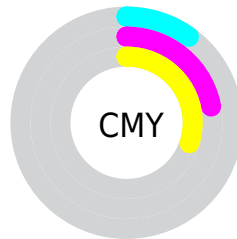


Cyan (0%)

Magenta (14%)

Yellow (22%)

Black (10%)



Cyan (10%)


Magenta (22%)


Yellow (30%)

Brightness & Saturation Gradients

These gradients show how the YUV color 205.1030, -12.8688, 20.9577 changes by changing the brightness by 10 percent. The first figure shows a shift by +10% for each color and the second figure -10%.


Similar to the brightness gradients but the following saturation gradients show a change of the YUV color 205.1030, -12.8688, 20.9577 by changing the saturation by 10% instead.


 205.1030,
-12.8688, 20.9577


 205.1030,
-12.8688, 20.9577


255.0000, 0.0000,
0.0000


 177.8040,
-12.7214, 20.3429


 252.7200, -8.7360,
1.9996

 150.6190,
-12.1372, 19.6281

 125.0210,
-11.8424, 18.3986

 99.8360, -11.2581,
17.6838

 75.6510, -10.6739,
16.9691

 52.8680, -9.7949,
15.0248

 31.1560, -9.9369,

13.8952

8.0620, -3.9746,
14.8546

0.0000, 0.0000,
0.0000

205.1030,
-12.8688, 20.9577

205.1030,
-12.8688, 20.9577

194.2630,
-18.8637, 30.4643

215.9430, -6.8739,
11.4510

183.4230,
-24.8585, 39.9710

226.7830, -0.8790,
1.9443

171.9960,
-30.5640, 49.9925

238.2100, 4.8265,
-8.0772

161.1560,
-36.5589, 59.4992

247.2260, 3.8326,
-15.9842

■ 150.3160,
-42.5538, 69.0059

■ 139.5900,
-48.1119, 78.4126

■ 128.7500,
-54.1067, 87.9193

■ 119.5400,
-58.9332, 95.9964

Harmonies

Analogous

The Analogous color harmony consists of three colors that are next to each other on the color wheel.



206.3900, -8.0803, 25.0910



205.1030, -12.8688, 20.9577



203.6950, -14.1466, 10.7915

Triad

The Triadic color harmony groups three colors that are evenly spaced from another and form a triangle on the color wheel.



205.1030, -12.8688, 20.9577



199.0030, 1.9705, -25.4356



205.2140, 12.2195, 0.6893

Complementary

The Complementary color scheme is a pair of colors which are on the opposite of each other on the color wheel.



205.1030, -12.8688, 20.9577



202.8970, 12.8688, -20.9577

Split Complementary

Split-complementary colors differ from the complementary color scheme. The scheme consists of three colors, the original color and two neighbors of the complement color.



203.1090, 14.7363, -13.2506



205.1030, -12.8688, 20.9577



198.9300, 9.4015, -28.8796

Square

The Square scheme is like the rectangle color scheme, but the four colors are evenly spaced on the color wheel.



205.1030, -12.8688, 20.9577



200.0060, -5.9190, -14.9143



200.8040, 13.9006, -25.2611



206.6950, 6.0664, 14.2995

Rectangle

The Rectangle color scheme consists of four colors that form a rectangle on the color wheel.



205.1030, -12.8688, 20.9577



202.5800, -13.1039, 2.9993



200.8040, 13.9006, -25.2611



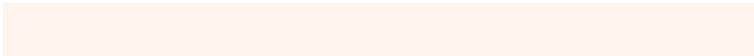
204.8220, 13.3988, -4.2289

Sweetspot

The Sweet Spot groups the original color and five complimentary colors.



205.1030, -12.8688, 20.9577



246.4910, -4.6791, 7.4624



197.5980, 6.6072, 27.5396



122.6370, -2.7790, 4.7034



0.0000, 0.0000, 0.0000



128.0000, 0.0000, 0.0000

Same Dimension

The Same Dimension uses a secret algorithm to generate beautiful new colors.



205.1030, -12.8688, 20.9577



223.4090, -16.9636, 27.7053



219.1910, -19.8142, 8.6025



109.5230, -3.2158, 4.8033



93.4370, -46.0644, 75.0388



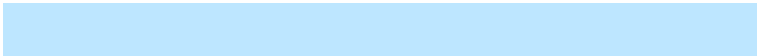
26.4020, -13.0162, 21.5724

Inverse Universe

The Inverse Universe completely reimagines the original color for something new.



202.8970, 12.8688, -20.9577



220.5910, 16.9636, -27.7053



188.8090, 19.8142, -8.6025



108.4770, 3.2158, -4.8033



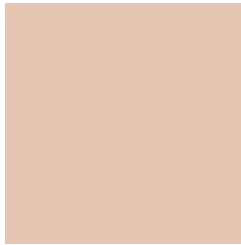
85.5630, 46.0644, -75.0388



24.5980, 13.0162, -21.5724

Previews

White Background



This preview shows how the YUV color 205.1030, -12.8688, 20.9577 looks on a white background.

Color Contrast Check

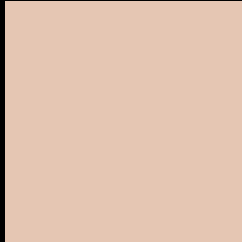
Large Text (above 18pt) WCAG AA × Fail

Any Text WCAG AA × Fail

Large Text (above 18pt) WCAG AAA × Fail

Any Text WCAG AAA × Fail

Black Background



This preview shows how the YUV color 205.1030, -12.8688, 20.9577 looks on a black background.

Color Contrast Check

Large Text (above 18pt) WCAG AA ✓ Pass

Any Text WCAG AA ✓ Pass

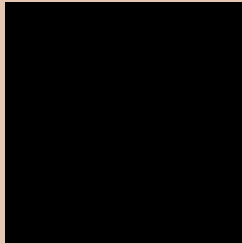
Large Text (above 18pt) WCAG AAA ✓ Pass

Any Text WCAG AAA ✓ Pass

If you want to check with other color combinations, try the [Color Contrast Checker](#).

YUV 205.1030, -12.8688, 20.9577

Background



This preview shows how black text looks on a background with the YUV color 205.1030, -12.8688, 20.9577.



This preview shows how white text looks on a background with the YUV color 205.1030, -12.8688, 20.9577.

Color Blindness Simulation

Color vision deficiency is a very complex topic, and I could not describe the different causes any better than Wikipedia does, so if you want to learn more, you should check out their [article about color blindness](#).

Dichromacy



Original Color

205.1030, -12.8688, 20.9577

Protanopia

203.5960, -10.6468, 8.2473

Deuteranopia

205.7120, -13.1690, 23.9316



Tritanopia

207.3710, 0.8031, 22.4766

Trichromacy



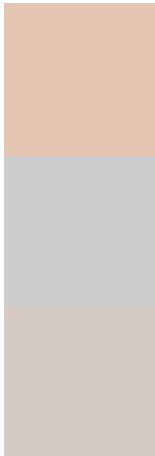
Original Color
205.1030, -12.8688, 20.9577

Protanomaly
204.1020, -11.3893, 13.0655

Deuteranomaly
205.4130, -13.0216, 23.3168

Tritanomaly
206.4050, -4.1437, 22.4468

Monochromacy



Original Color
205.1030, -12.8688, 20.9577

Achromatopsia
205.0000, 0.0000, 0.0000

Achromatomaly
204.9040, -4.3897, 7.9772

CSS Examples

Text

The CSS property to change the color of the text to YUV 205.1030, -12.8688, 20.9577 is called "color". The color property can be set on classes, ids or directly on the HTML element.

This example shows how text in the color `rgb(229, 198, 179)` looks like.

```
.text, #text, p{  
    color:rgb(229, 198, 179)  
}
```

If you want to add a text shadow in that color use the text-shadow property, you can generate a text shadow directly with our [CSS Text Shadow Generator](#).

Here you see how black text with a 4 pixel rgb(229, 198, 179) colored shadow looks like.

```
.shadow{ text-shadow: 4px 4px 2px rgb(229, 198, 179) }
```

Border

The CSS property to change the border of an element to YUV 205.1030, -12.8688, 20.9577 is called "border".

The border property can be set on classes, ids or directly on the HTML element.

This example shows the color as border, it can be applied via the CSS property "border" or "border-color".

```
.border, #border, table{ border:4px solid rgb(229, 198, 179) }
```


If only the border color should be changed use the property border-color.

```
.border{ border-color:rgb(229, 198, 179) }
```

If you want to add a box shadow in that color use:

Here you see how a box with a 4 pixel rgb(229, 198, 179) colored shadow looks like.

```
.boxshadow{ -moz-box-shadow:4px 4px 4px  
4px rgb(229, 198, 179); -webkit-box-  
shadow:4px 4px 4px 4px rgb(229, 198, 179);  
box-shadow:4px 4px 4px 4px rgb(229, 198,  
179) }
```

Background

The CSS property to change the background color of an element to YUV 205.1030, -12.8688, 20.9577 is called "background". The background property can be set on classes, ids or directly on the HTML element.

```
.background, #background, body{  
background: rgb(229, 198, 179) }
```

If only the background color should be changed can be used:

```
.background{ background-color: rgb(229,  
198, 179) }
```

This example shows the color as background, it is applied via the CSS property "background".

To optimize and compress your CSS code, you can use our [online CSS compressor and optimizer](#) based on csstidy. If you want to create a linear or radial gradient as background or border, check our [CSS Gradient Generator](#).

Hey! You found this booklet
interesting? Support Converting
Colors with the new Membership
Option!

The pro membership hides all ads, plus gives you
double the colors in the color bucket, and more
awesome pro features!

[Learn more, Memberships starting at \\$2.50/m!](#)

**Follow me
on Twitter!**

@ConvertingColor