

Converting Colors

YUV(206.1800, -12.9067,
33.1681)

Have a look what the booklet for
YUV(206.1800, -12.9067, 33.1681)
contains.

YUV(206.1800, -12.9067, 33.1681)	3
<i>Conversions</i>	4
<i>Details</i>	6
<i>Harmonies</i>	12
<i>Previews</i>	24
<i>Color Blindness Simulation</i>	28
<i>CSS Examples</i>	31

Color

**YUV(206.1800, -12.9067,
33.1681)**

Conversions

Conversions Part 1

Format	Color
Hex	F4C0B4
RGB	244, 192, 180
RGB Percent	96%, 75%, 71%
CMY	0.0431, 0.2471, 0.2941
CMYK	0.00, 0.21, 0.26, 0.04
HSL	11°, 74%, 83%
HSV	11°, 26%, 96%
XYZ	64.3961, 60.2277, 51.4111
YIQ	206.1800, 34.8440, 7.2920

Conversions

Conversions Part 2

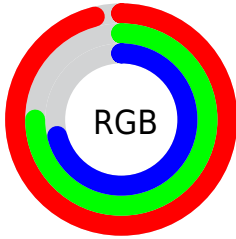
Format	Color
R_{YB}	244, 195, 180
Decimal	16040116
CIE _{Lab}	81.96, 16.90, 13.16
CIE _{LCh}	82, 21.419, 37.913
Yxy	60.2277, 0.3658, 0.3421
Android (android.graphics.Color)	4294230196 (0xFFFF4C0B4)
YUV	206.1800, -12.9067, 33.1681
Hunter-Lab	77.6065, 12.3039, 15.0474

Details

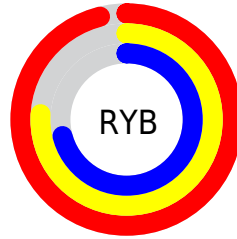
The YUV color $206.1800, -12.9067, 33.1681$ is a light color, and the websafe version is hex FFCCCC . A complement of this color would be $217.8200, 12.9067, -33.1681$, and the grayscale version is $206.0000, 0.0000, 0.0000$.

A 20% lighter version of the original color is $249.3120, -6.5628, 4.9884$, and $151.3970, -12.0277, 31.2238$ is the 20% darker color. If you saturate the color by 10%, you get $191.7040, -17.6021, 45.8636$, and if you desaturate by 10%, it is $220.6560, -8.2114, 20.4727$.

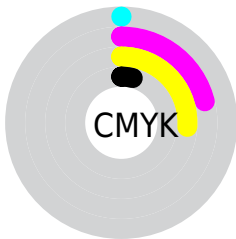
Distribution



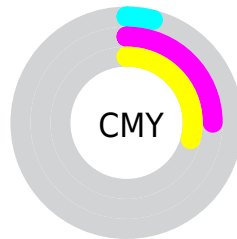
- Red (96%)
- Green (75%)
- Blue (71%)



- Red (96%)
- Yellow (76%)
- Blue (71%)



- Cyan (0%)
- Magenta (21%)
- Yellow (26%)
- Black (4%)



- Cyan (4%)
- Magenta (25%)
- Yellow (29%)

Brightness & Saturation Gradients

These gradients show how the YUV color 206.1800, -12.9067, 33.1681 changes by changing the brightness by 10 percent. The first figure shows a shift by +10% for each color and the second figure -10%.

Similar to the brightness gradients but the following saturation gradients show a change of the YUV color 206.1800, -12.9067, 33.1681 by changing the saturation by 10% instead.

■ 206.1800,
-12.9067, 33.1681

■ 206.1800,
-12.9067, 33.1681

255.0000, 0.0000,
0.0000

■ 178.5820,
-12.6119, 31.9386

■ 249.3120, -6.5628,
4.9884

■ 151.3970,
-12.0277, 31.2238

■ 125.5000,
-11.5855, 29.3795

■ 100.0160,
-10.8539, 28.0500

■ 76.1190, -10.4117,
26.2056

■ 52.7490, -9.2433,
24.7761

■ 30.4390, -9.0904,

22.4170

■ 10.4650, -5.1592,
21.5172

■ 0.0000, 0.0000,
0.0000

■ 206.1800,
-12.9067, 33.1681

■ 206.1800,
-12.9067, 33.1681

■ 191.7040,
-17.6021, 45.8636

■ 220.6560, -8.2114,
20.4727

■ 177.1140,
-22.7342, 58.6590

■ 235.2460, -3.0793,
7.6773

■ 163.2250,
-27.7189, 70.8397

■ 249.1350, 1.9054,
-4.5034

■ 148.6350,
-32.8511, 83.6351

■ 251.7110, 1.6215,
-6.7625

■ 134.1590,
-37.5464, 96.3306

■ 119.6830,
-42.2417, 109.0260

■ 105.0930,
-47.3738, 121.8214

■ 99.9580, -49.2793,
126.3248

Harmonies

Analogous

The Analogous color harmony consists of three colors that are next to each other on the color wheel.



207.4710, -4.1762, 32.9129



206.1800, -12.9067, 33.1681



204.3440, -18.4106, 25.1313

Triad

The Triadic color harmony groups three colors that are evenly spaced from another and form a triangle on the color wheel.



206.1800, -12.9067, 33.1681



197.5810, -4.7234, -25.0655



203.6620, 19.3936, -13.7356

Complementary

The Complementary color scheme is a pair of colors which are on the opposite of each other on the color wheel.



206.1800, -12.9067, 33.1681



217.8200, 12.9067, -33.1681

Split Complementary

Split-complementary colors differ from the complementary color scheme. The scheme consists of three colors, the original color and two neighbors of the complement color.



199.6660, 19.8847, -31.2791



206.1800, -12.9067, 33.1681



196.3650, 6.2291, -38.0311

Square

The Square scheme is like the rectangle color scheme, but the four colors are evenly spaced on the color wheel.



206.1800, -12.9067, 33.1681



199.9870, -13.7976, -7.8816



196.4600, 15.5492, -40.7454



206.5290, 14.5292, 6.5521

Rectangle

The Rectangle color scheme consists of four colors that form a rectangle on the color wheel.



206.1800, -12.9067, 33.1681



203.3490, -19.3991, 15.4799



196.4600, 15.5492, -40.7454



202.1450, 20.1415, -20.2982

Sweetspot

The Sweet Spot groups the original color and five complimentary colors.



206.1800, -12.9067, 33.1681



242.7410, -3.8163, 10.7511



205.0640, 13.2794, 34.1469



120.0610, -2.4951, 6.9625



0.0000, 0.0000, 0.0000



128.0000, 0.0000, 0.0000

Same Dimension

The Same Dimension uses a secret algorithm to generate beautiful new colors.



206.1800, -12.9067, 33.1681



208.4260, -15.9860, 40.8454



224.9640, -22.1673, 16.6946



114.7620, -2.3477, 6.3477



76.1590, -37.5464, 96.3306



24.0980, -11.8803, 30.6091

Inverse Universe

The Inverse Universe completely reimagines the original color for something new.



217.8200, 12.9067, -33.1681



222.5740, 15.9860, -40.8454



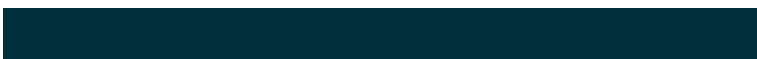
199.0360, 22.1673, -16.6946



117.2380, 2.3477, -6.3477



109.8410, 37.5464, -96.3306



34.9020, 11.8803, -30.6091

Previews

White Background



This preview shows how the YUV color 206.1800, -12.9067, 33.1681 looks on a white background.

Color Contrast Check

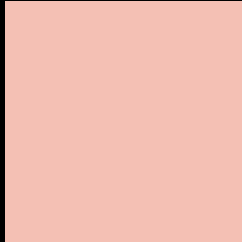
Large Text (above 18pt) WCAG AA × Fail

Any Text WCAG AA × Fail

Large Text (above 18pt) WCAG AAA × Fail

Any Text WCAG AAA × Fail

Black Background



This preview shows how the YUV color 206.1800, -12.9067, 33.1681 looks on a black background.

Color Contrast Check

Large Text (above 18pt) WCAG AA ✓ Pass

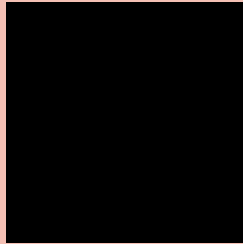
Any Text WCAG AA ✓ Pass

Large Text (above 18pt) WCAG AAA ✓ Pass

Any Text WCAG AAA ✓ Pass

If you want to check with other color combinations, try the [Color Contrast Checker](#).

YUV 206.1800, -12.9067, 33.1681 Background



This preview shows how black text looks on a background with the YUV color 206.1800, -12.9067, 33.1681.



This preview shows how white text looks on a background with the YUV color 206.1800, -12.9067, 33.1681.

Color Blindness Simulation

Color vision deficiency is a very complex topic, and I could not describe the different causes any better than Wikipedia does, so if you want to learn more, you should check out their [article about color blindness](#).

Dichromacy



Original Color

206.1800, -12.9067, 33.1681

Protanopia

203.7530, -8.7522, 7.2326

Deuteranopia

205.7120, -13.1690, 23.9316



Tritanopia

207.9380, -2.4344, 34.2574

Trichromacy



Original Color

206.1800, -12.9067, 33.1681

Protanomaly

204.7650, -10.2371, 16.8691

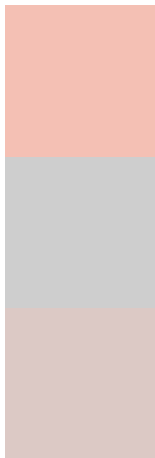
Deuteranomaly

205.7340, -13.1799, 27.4203

Tritanomaly

207.3140, -6.0708, 33.9276

Monochromacy



Original Color

206.1800, -12.9067, 33.1681

Achromatopsia

206.0000, 0.0000, 0.0000

Achromatomaly

206.2250, -4.5479, 12.0807

CSS Examples

Text

The CSS property to change the color of the text to YUV 206.1800, -12.9067, 33.1681 is called "color". The color property can be set on classes, ids or directly on the HTML element.

This example shows how text in the color `rgb(244, 192, 180)` looks like.

```
.text, #text, p{  
    color:rgb(244, 192, 180)  
}
```

If you want to add a text shadow in that color use the text-shadow property, you can generate a text shadow directly with our [CSS Text Shadow Generator](#).

Here you see how black text with a 4 pixel rgb(244, 192, 180) colored shadow looks like.

```
.shadow{ text-shadow: 4px 4px 2px rgb(244, 192, 180) }
```

Border

The CSS property to change the border of an element to YUV 206.1800, -12.9067, 33.1681 is called "border".

The border property can be set on classes, ids or directly on the HTML element.

This example shows the color as border, it can be applied via the CSS property "border" or "border-color".

```
.border, #border, table{ border:4px solid rgb(244, 192, 180) }
```


If only the border color should be changed use the property `border-color`.

```
.border{ border-color:rgb(244, 192, 180) }
```

If you want to add a box shadow in that color use:

Here you see how a box with a 4 pixel `rgb(244, 192, 180)` colored shadow looks like.

```
.boxshadow{ -moz-box-shadow:4px 4px 4px  
4px rgb(244, 192, 180); -webkit-box-  
shadow:4px 4px 4px 4px rgb(244, 192, 180);  
box-shadow:4px 4px 4px 4px rgb(244, 192,  
180) }
```

Background

The CSS property to change the background color of an element to YUV 206.1800, -12.9067, 33.1681 is called "background". The background property can be set on classes, ids or directly on the HTML element.

```
.background, #background, body{  
background: rgb(244, 192, 180) }
```

If only the background color should be changed can be used:

```
.background{ background-color: rgb(244,  
192, 180) }
```

This example shows the color as background, it is applied via the CSS property "background".

To optimize and compress your CSS code, you can use our [online CSS compressor and optimizer](#) based on csstidy. If you want to create a linear or radial gradient as background or border, check our [CSS Gradient Generator](#).

Hey! You found this booklet interesting? Support Converting Colors with the new Membership Option!

The pro membership hides all ads, plus gives you double the colors in the color bucket, and more awesome pro features!

[Learn more, Memberships starting at \\$2.50/m!](#)

**Follow me
on Twitter!**

@ConvertingColor