

Converting Colors

YUV(206.2020, 0.3934, 13.8548)

Have a look what the booklet for
YUV(206.2020, 0.3934, 13.8548)
contains.

YUV(206.2020, 0.3934, 13.8548)	3
<i>Conversions</i>	4
<i>Details</i>	6
<i>Harmonies</i>	12
<i>Previews</i>	24
<i>Color Blindness Simulation</i>	28
<i>CSS Examples</i>	31

Color

**YUV(206.2020, 0.3934,
13.8548)**

Conversions

Conversions Part 1

Format	Color
Hex	DEC6CF
RGB	222, 198, 207
RGB Percent	87%, 78%, 81%
CMY	0.1294, 0.2235, 0.1882
CMYK	0.00, 0.11, 0.07, 0.13
HSL	338°, 27%, 82%
HSV	338°, 11%, 87%
XYZ	61.5808, 60.4228, 67.4486
YIQ	206.2020, 11.4150, 7.8870

Conversions

Conversions Part 2

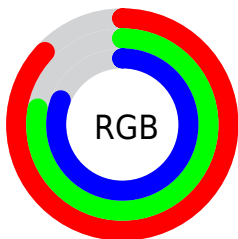
Format	Color
R _Y B	222, 198, 207
Decimal	14599887
CIE Lab	82.07, 9.95, -1.41
CIE LCh	82, 10.047, 351.938
Yxy	60.4228, 0.3250, 0.3189
Android (android.graphics.Color)	4292789967 (0xFFDEC6CF)
YUV	206.2020, 0.3934, 13.8548
Hunter-Lab	77.7321, 5.3798, 2.9662

Details

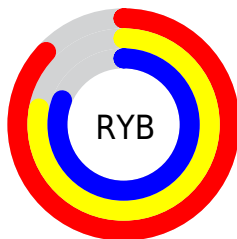
The YUV color $206.2020, 0.3934, 13.8548$ is a light color, and the websafe version is hex `CCCCCC`. A complement of this color would be $213.7980, -0.3934, -13.8548$, and the grayscale version is $206.0000, 0.0000, 0.0000$.

A 20% lighter version of the original color is $255.0000, 0.0000, 0.0000$, and $151.9030, 0.5408, 13.2401$ is the 20% darker color. If you saturate the color by 10%, you get $191.6920, 0.6448, 26.5801$, and if you desaturate by 10%, it is $220.7120, 0.1420, 1.1296$.

Distribution



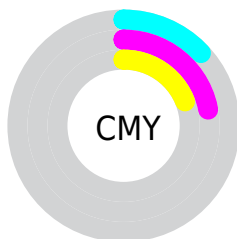
- Red (87%)
- Green (78%)
- Blue (81%)



- Red (87%)
- Yellow (78%)
- Blue (81%)



- Cyan (0%)
- Magenta (11%)
- Yellow (7%)
- Black (13%)



- Cyan (13%)
- Magenta (22%)
- Yellow (19%)

Brightness & Saturation Gradients

These gradients show how the YUV color 206.2020, 0.3934, 13.8548 changes by changing the brightness by 10 percent. The first figure shows a shift by +10% for each color and the second figure -10%.

Similar to the brightness gradients but the following saturation gradients show a change of the YUV color 206.2020, 0.3934, 13.8548 by changing the saturation by 10% instead.

■ 206.2020, 0.3934,
13.8548

■ 206.2020, 0.3934,
13.8548

255.0000, 0.0000,
0.0000

■ 178.7890, 0.1040,
13.3400

■ 151.9030, 0.5408,
13.2401

■ 126.1910, 0.3988,
12.1105

■ 101.1910, 0.3988,
12.1105

■ 76.8920, 0.5462,
11.4957

■ 54.1800, 0.4043,
10.3661

■ 32.8810, 0.5517,

9.7514

■ 8.7290, 1.1196,
14.2697

■ 0.0000, 0.0000,
0.0000

■ 206.2020, 0.3934,
13.8548

■ 206.2020, 0.3934,
13.8548

■ 191.6920, 0.6448,
26.5801

■ 220.7120, 0.1420,
1.1296

■ 177.1820, 0.8963,
39.3054

■ 235.2220, -0.1094,
-11.5957

■ 162.0850, 1.4371,
52.5455

■ 244.4490, 2.2436,
-19.6878

■ 147.6890, 2.1253,
65.1707

■ 245.1330, 4.8644,
-20.2876

■ 133.1790, 2.3768,
77.8960

■ 118.6690, 2.6282,
90.6213

■ 104.1590, 2.8796,
103.3466

■ 89.0620, 3.4204,
116.5866

■ 75.8400, 3.5299,
128.1823

Harmonies

Analogous

The Analogous color harmony consists of three colors that are next to each other on the color wheel.



206.0100, 4.9251, 7.0072



206.2020, 0.3934, 13.8548



205.9590, -4.4168, 16.6990

Triad

The Triadic color harmony groups three colors that are evenly spaced from another and form a triangle on the color wheel.



206.2020, 0.3934, 13.8548



203.2360, -8.0043, 0.6700



201.7790, 8.4900, -16.4692

Complementary

The Complementary color scheme is a pair of colors which are on the opposite of each other on the color wheel.



206.2020, 0.3934, 13.8548



213.7980, -0.3934, -13.8548

Split Complementary

Split-complementary colors differ from the complementary color scheme. The scheme consists of three colors, the original color and two neighbors of the complement color.



201.4430, 4.7116, -17.9285



206.2020, 0.3934, 13.8548



201.9900, -4.9251, -7.0072

Square

The Square scheme is like the rectangle color scheme, but the four colors are evenly spaced on the color wheel.



206.2020, 0.3934, 13.8548



204.6500, -9.1944, 9.0770



201.4990, -0.2460, -14.4696



203.6380, 9.0525, -10.2065

Rectangle

The Rectangle color scheme consists of four colors that form a rectangle on the color wheel.



206.2020, 0.3934, 13.8548



205.6770, -6.7428, 16.0693



201.4990, -0.2460, -14.4696



201.7250, 7.0376, -17.2988

Sweetspot

The Sweet Spot groups the original color and five complimentary colors.



206.2020, 0.3934, 13.8548



249.7340, 0.1311, 4.6183



205.2210, 8.2720, 6.8222



124.0220, -0.0108, 3.4887



0.0000, 0.0000, 0.0000



128.0000, 0.0000, 0.0000

Same Dimension

The Same Dimension uses a secret algorithm to generate beautiful new colors.



206.2020, 0.3934, 13.8548



233.2350, 0.3771, 19.0879



206.9370, -4.4059, 13.2103



104.7450, 0.1257, 6.3626



60.1480, 2.8850, 101.6022



16.4040, 0.7868, 27.7097

Inverse Universe

The Inverse Universe completely reimagines the original color for something new.



206.2020, 0.3934, 13.8548



233.2350, 0.3771, 19.0879



213.0630, 4.4059, -13.2103



104.7450, 0.1257, 6.3626



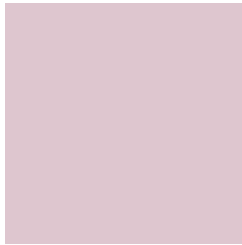
60.1480, 2.8850, 101.6022



16.4040, 0.7868, 27.7097

Previews

White Background



This preview shows how the YUV color 206.2020, 0.3934, 13.8548 looks on a white background.

Color Contrast Check

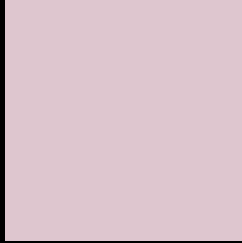
Large Text (above 18pt) WCAG AA × Fail

Any Text WCAG AA × Fail

Large Text (above 18pt) WCAG AAA × Fail

Any Text WCAG AAA × Fail

Black Background



This preview shows how the YUV color 206.2020, 0.3934, 13.8548 looks on a black background.

Color Contrast Check

Large Text (above 18pt) WCAG AA ✓ Pass

Any Text WCAG AA ✓ Pass

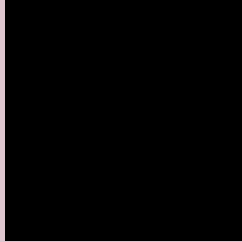
Large Text (above 18pt) WCAG AAA ✓ Pass

Any Text WCAG AAA ✓ Pass

If you want to check with other color combinations, try the [Color Contrast Checker](#).

YUV 206.2020, 0.3934, 13.8548

Background



This preview shows how black text looks on a background with the YUV color 206.2020, 0.3934, 13.8548.



This preview shows how white text looks on a background with the YUV color 206.2020, 0.3934,

Color Blindness Simulation

Color vision deficiency is a very complex topic, and I could not describe the different causes any better than Wikipedia does, so if you want to learn more, you should check out their [article about color blindness](#).

Dichromacy



Original Color

206.2020, 0.3934, 13.8548

Protanopia

204.6950, 2.6154, 1.1445

Deuteranopia

206.5010, 0.2460, 14.4696



Tritanopia

206.5980, 3.1562, 14.3846

Trichromacy



Original Color

206.2020, 0.3934, 13.8548

Protanomaly

205.2010, 1.8729, 5.9627

Deuteranomaly

206.5010, 0.2460, 14.4696

Tritanomaly

206.3700, 2.2826, 14.5845

Monochromacy



Original Color

206.2020, 0.3934, 13.8548

Achromatopsia

206.0000, 0.0000, 0.0000

Achromatomaly

206.0330, -0.0163, 5.2331

CSS Examples

Text

The CSS property to change the color of the text to YUV 206.2020, 0.3934, 13.8548 is called "color". The color property can be set on classes, ids or directly on the HTML element.

This example shows how text in the color `rgb(222, 198, 207)` looks like.

```
.text, #text, p{  
    color:rgb(222, 198, 207)  
}
```

If you want to add a text shadow in that color use the text-shadow property, you can generate a text shadow directly with our [CSS Text Shadow Generator](#).

Here you see how black text with a 4 pixel rgb(222, 198, 207) colored shadow looks like.

```
.shadow{ text-shadow: 4px 4px 2px rgb(222, 198, 207) }
```

Border

The CSS property to change the border of an element to YUV 206.2020, 0.3934, 13.8548 is called "border". The border property can be set on classes, ids or directly on the HTML element.

This example shows the color as border, it can be applied via the CSS property "border" or "border-color".

```
.border, #border, table{ border:4px solid rgb(222, 198, 207) }
```


If only the border color should be changed use the property border-color.

```
.border{ border-color:rgb(222, 198, 207) }
```

If you want to add a box shadow in that color use:

Here you see how a box with a 4 pixel rgb(222, 198, 207) colored shadow looks like.

```
.boxshadow{ -moz-box-shadow:4px 4px 4px  
4px rgb(222, 198, 207); -webkit-box-  
shadow:4px 4px 4px 4px rgb(222, 198, 207);  
box-shadow:4px 4px 4px 4px rgb(222, 198,  
207) }
```

Background

The CSS property to change the background color of an element to YUV 206.2020, 0.3934, 13.8548 is called "background". The background property can be set on classes, ids or directly on the HTML element.

```
.background, #background, body{  
background: rgb(222, 198, 207) }
```

If only the background color should be changed can be used:

```
.background{ background-color: rgb(222,  
198, 207) }
```

This example shows the color as background, it is applied via the CSS property "background".

To optimize and compress your CSS code, you can use our [online CSS compressor and optimizer](#) based on csstidy. If you want to create a linear or radial gradient as background or border, check our [CSS Gradient Generator](#).

Hey! You found this booklet interesting? Support Converting Colors with the new Membership Option!

The pro membership hides all ads, plus gives you double the colors in the color bucket, and more awesome pro features!

[Learn more, Memberships starting at \\$2.50/m!](#)

**Follow me
on Twitter!**

@ConvertingColor