

Converting Colors

YUV(206.3720, -4.1274,
17.2138)

Have a look what the booklet for
YUV(206.3720, -4.1274, 17.2138)
contains.

YUV(206.3720, -4.1274, 17.2138)	3
<i>Conversions</i>	4
<i>Details</i>	6
<i>Harmonies</i>	12
<i>Previews</i>	24
<i>Color Blindness Simulation</i>	28
<i>CSS Examples</i>	31

Color

**YUV(206.3720, -4.1274,
17.2138)**

Conversions

Conversions Part 1

Format	Color
Hex	E2C6C6
RGB	226, 198, 198
RGB Percent	89%, 78%, 78%
CMY	0.1137, 0.2235, 0.2235
CMYK	0.00, 0.12, 0.12, 0.11
HSL	0°, 33%, 83%
HSV	0°, 12%, 89%
XYZ	61.7512, 60.6341, 61.8750
YIQ	206.3720, 16.6880, 5.9360

Conversions

Conversions Part 2

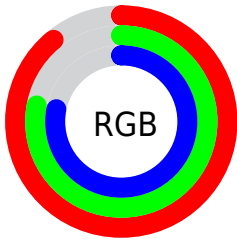
Format	Color
R _Y B	226, 198, 198
Decimal	14862022
CIE Lab	82.18, 9.85, 3.62
CIE LCh	82, 10.498, 20.170
Yxy	60.6341, 0.3351, 0.3291
Android (android.graphics.Color)	4293052102 (0xFFE2C6C6)
YUV	206.3720, -4.1274, 17.2138
Hunter-Lab	77.8679, 5.2860, 7.3948

Details

The YUV color $206.3720, -4.1274, 17.2138$ is a light color, and the websafe version is hex FFCCCC . A complement of this color would be $217.6280, 4.1274, -17.2138$, and the grayscale version is $206.0000, 0.0000, 0.0000$.

A 20% lighter version of the original color is $255.0000, 0.0000, 0.0000$, and $151.7740, -3.8326, 15.9842$ is the 20% darker color. If you saturate the color by 10%, you get $190.2490, -7.5178, 31.3536$, and if you desaturate by 10%, it is $222.4950, -0.7370, 3.0739$.

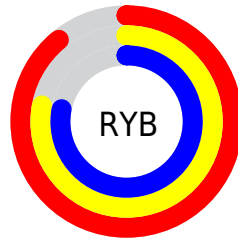
Distribution



Red (89%)

Green (78%)

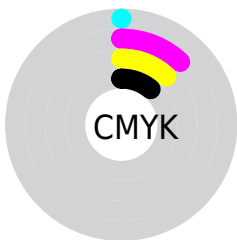
Blue (78%)



Red (89%)

Yellow (78%)

Blue (78%)

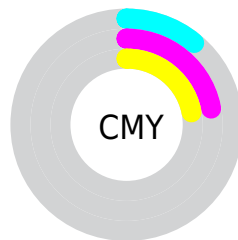


Cyan (0%)

Magenta (12%)

Yellow (12%)

Black (11%)



Cyan (11%)

Magenta (22%)

Yellow (22%)

Brightness & Saturation Gradients

These gradients show how the YUV color 206.3720, -4.1274, 17.2138 changes by changing the brightness by 10 percent. The first figure shows a shift by +10% for each color and the second figure -10%.

Similar to the brightness gradients but the following saturation gradients show a change of the YUV color 206.3720, -4.1274, 17.2138 by changing the saturation by 10% instead.

■ 206.3720, -4.1274,
17.2138

■ 206.3720, -4.1274,
17.2138

255.0000, 0.0000,
0.0000

■ 179.0730, -3.9800,
16.5990

■ 151.7740, -3.8326,
15.9842

■ 125.8880, -3.3958,
15.8842

■ 101.1760, -3.5378,
14.7546

■ 76.8770, -3.3904,
14.1399

■ 54.2790, -3.0955,
12.9103

■ 32.6810, -2.8007,

11.6808

■ 8.3720, -4.1274,
17.2138

■ 0.0000, 0.0000,
0.0000

■ 206.3720, -4.1274,
17.2138

■ 206.3720, -4.1274,
17.2138

■ 190.2490, -7.5178,
31.3536

■ 222.4950, -0.7370,
3.0739

■ 174.8270,
-10.7607, 44.8787

■ 237.9170, 2.5059,
-10.4512

■ 158.7040,
-14.1511, 59.0186

■ 246.3290, 4.2748,
-17.8285

■ 143.2820,
-17.3940, 72.5437

■ 127.1590,
-20.7844, 86.6836

■ 111.0360,
-24.1747, 100.8234

■ 95.6140, -27.4177,
114.3485

■ 79.4910, -30.8081,
128.4884

■ 67.5740, -33.3140,
138.9396

Harmonies

Analogous

The Analogous color harmony consists of three colors that are next to each other on the color wheel.



206.6150, 0.6828, 14.3696



206.3720, -4.1274, 17.2138



205.7370, -7.7583, 15.1397

Triad

The Triadic color harmony groups three colors that are evenly spaced from another and form a triangle on the color wheel.



206.3720, -4.1274, 17.2138



202.5770, -5.2145, -7.5220



203.5670, 10.0735, -11.0213

Complementary

The Complementary color scheme is a pair of colors which are on the opposite of each other on the color wheel.



206.3720, -4.1274, 17.2138



217.6280, 4.1274, -17.2138

Split Complementary

Split-complementary colors differ from the complementary color scheme. The scheme consists of three colors, the original color and two neighbors of the complement color.



202.0670, 8.3480, -17.5988



206.3720, -4.1274, 17.2138



201.4990, -0.2460, -14.4696

Square

The Square scheme is like the rectangle color scheme, but the four colors are evenly spaced on the color wheel.



206.3720, -4.1274, 17.2138



203.4210, -8.5886, 1.3848



201.1440, 4.8590, -18.5433



204.9810, 8.8834, -2.6143

Rectangle

The Rectangle color scheme consists of four colors that form a rectangle on the color wheel.



206.3720, -4.1274, 17.2138



205.2590, -9.4947, 12.0509



201.1440, 4.8590, -18.5433



202.8440, 9.9369, -13.8952

Sweetspot

The Sweet Spot groups the original color and five complimentary colors.



206.3720, -4.1274, 17.2138



247.9900, -1.4741, 6.1478



209.5640, 8.1029, 14.4144



123.0930, -1.0318, 4.3034



0.0000, 0.0000, 0.0000



128.0000, 0.0000, 0.0000

Same Dimension

The Same Dimension uses a secret algorithm to generate beautiful new colors.



206.3720, -4.1274, 17.2138



228.3620, -5.6015, 23.3615



214.5900, -8.1789, 10.0066



104.2890, -1.6215, 6.7625



52.6240, -25.9436, 108.2008



14.3520, -7.0755, 29.5093

Inverse Universe

The Inverse Universe completely reimagines the original color for something new.



217.6280, 4.1274, -17.2138



243.6380, 5.6015, -23.3615



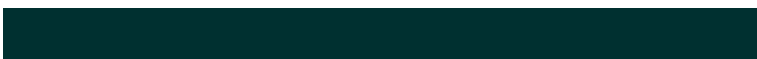
209.4100, 8.1789, -10.0066



108.7110, 1.6215, -6.7625



123.3760, 25.9436, -108.2008



33.6480, 7.0755, -29.5093

Previews

White Background



This preview shows how the YUV color 206.3720, -4.1274, 17.2138 looks on a white background.

Color Contrast Check

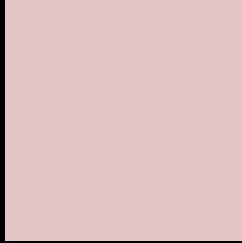
Large Text (above 18pt) WCAG AA × Fail

Any Text WCAG AA × Fail

Large Text (above 18pt) WCAG AAA × Fail

Any Text WCAG AAA × Fail

Black Background



This preview shows how the YUV color 206.3720, -4.1274, 17.2138 looks on a black background.

Color Contrast Check

Large Text (above 18pt) WCAG AA ✓ Pass

Any Text WCAG AA ✓ Pass

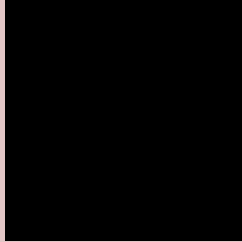
Large Text (above 18pt) WCAG AAA ✓ Pass

Any Text WCAG AAA ✓ Pass

If you want to check with other color combinations, try the [Color Contrast Checker](#).

YUV 206.3720, -4.1274, 17.2138

Background



This preview shows how black text looks on a background with the YUV color 206.3720, -4.1274, 17.2138.



This preview shows how white text looks on a background with the YUV color 206.3720, -4.1274,

Color Blindness Simulation

Color vision deficiency is a very complex topic, and I could not describe the different causes any better than Wikipedia does, so if you want to learn more, you should check out their [article about color blindness](#).

Dichromacy



Original Color

206.3720, -4.1274, 17.2138

Protanopia

205.1530, -2.0474, 3.3738

Deuteranopia

206.6710, -4.2748, 17.8285



Tritanopia

207.2780, 1.8349, 18.1732

Trichromacy



Original Color

206.3720, -4.1274, 17.2138

Protanomaly

205.6590, -2.7899, 8.1921

Deuteranomaly

206.6710, -4.2748, 17.8285

Tritanomaly

206.9960, -0.4910, 17.5435

Monochromacy



Original Color

206.3720, -4.1274, 17.2138

Achromatopsia

206.0000, 0.0000, 0.0000

Achromatomaly

205.9900, -1.4741, 6.1478

CSS Examples

Text

The CSS property to change the color of the text to YUV 206.3720, -4.1274, 17.2138 is called "color". The color property can be set on classes, ids or directly on the HTML element.

This example shows how text in the color `rgb(226, 198, 198)` looks like.

```
.text, #text, p{  
    color:rgb(226, 198, 198)  
}
```

If you want to add a text shadow in that color use the text-shadow property, you can generate a text shadow directly with our [CSS Text Shadow Generator](#).

Here you see how black text with a 4 pixel rgb(226, 198, 198) colored shadow looks like.

```
.shadow{ text-shadow: 4px 4px 2px rgb(226, 198, 198) }
```

Border

The CSS property to change the border of an element to YUV 206.3720, -4.1274, 17.2138 is called "border". The border property can be set on classes, ids or directly on the HTML element.

This example shows the color as border, it can be applied via the CSS property "border" or "border-color".

```
.border, #border, table{ border:4px solid rgb(226, 198, 198) }
```


If only the border color should be changed use the property `border-color`.

```
.border{ border-color:rgb(226, 198, 198) }
```

If you want to add a box shadow in that color use:

Here you see how a box with a 4 pixel `rgb(226, 198, 198)` colored shadow looks like.

```
.boxshadow{ -moz-box-shadow:4px 4px 4px 4px rgb(226, 198, 198); -webkit-box-shadow:4px 4px 4px 4px rgb(226, 198, 198); box-shadow:4px 4px 4px 4px rgb(226, 198, 198) }
```

Background

The CSS property to change the background color of an element to YUV 206.3720, -4.1274, 17.2138 is called "background". The background property can be set on classes, ids or directly on the HTML element.

```
.background, #background, body{  
background: rgb(226, 198, 198) }
```

If only the background color should be changed can be used:

```
.background{ background-color: rgb(226,  
198, 198) }
```

This example shows the color as background, it is applied via the CSS property "background".

To optimize and compress your CSS code, you can use our [online CSS compressor and optimizer](#) based on csstidy. If you want to create a linear or radial gradient as background or border, check our [CSS Gradient Generator](#).

Hey! You found this booklet interesting? Support Converting Colors with the new Membership Option!

The pro membership hides all ads, plus gives you double the colors in the color bucket, and more awesome pro features!

[Learn more, Memberships starting at \\$2.50/m!](#)

**Follow me
on Twitter!**

@ConvertingColor