

Converting Colors

YUV(206.5800, -9.6529,
16.1543)

Have a look what the booklet for
YUV(206.5800, -9.6529, 16.1543)
contains.

YUV(206.5800, -9.6529, 16.1543)	3
<i>Conversions</i>	4
<i>Details</i>	6
<i>Harmonies</i>	12
<i>Previews</i>	24
<i>Color Blindness Simulation</i>	28
<i>CSS Examples</i>	31

Color

**YUV(206.5800, -9.6529,
16.1543)**

Conversions

Conversions Part 1

Format	Color
Hex	E1C9BB
RGB	225, 201, 187
RGB Percent	88%, 79%, 73%
CMY	0.1176, 0.2118, 0.2667
CMYK	0.00, 0.11, 0.17, 0.12
HSL	22°, 39%, 81%
HSV	22°, 17%, 88%
XYZ	60.9076, 61.3687, 55.6489
YIQ	206.5800, 18.7980, 0.7340

Conversions

Conversions Part 2

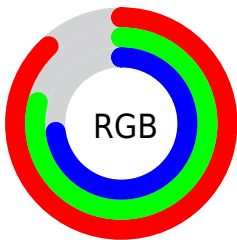
Format	Color
R _Y B	225, 209, 187
Decimal	14797243
CIE Lab	82.58, 6.17, 10.05
CIE LCh	83, 11.797, 58.460
Yxy	61.3687, 0.3423, 0.3449
Android (android.graphics.Color)	4292987323 (0xFFE1C9BB)
YUV	206.5800, -9.6529, 16.1543
Hunter-Lab	78.3382, 1.6912, 12.7190

Details

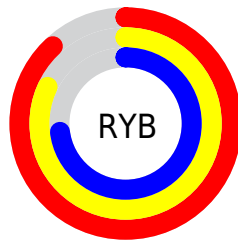
The YUV color $206.5800, -9.6529, 16.1543$ is a light color, and the websafe version is hex `CCCCCC`. A complement of this color would be $205.4200, 9.6529, -16.1543$, and the grayscale version is $207.0000, 0.0000, 0.0000$.

A 20% lighter version of the original color is $253.6320, -5.2416, 1.1997$, and $152.0960, -8.9213, 14.8248$ is the 20% darker color. If you saturate the color by 10%, you get $195.7400, -15.6478, 25.6610$, and if you desaturate by 10%, it is $217.4200, -3.6581, 6.6477$.

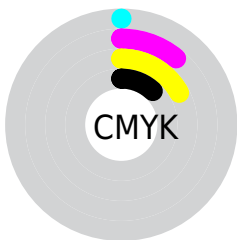
Distribution



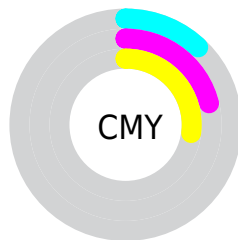
- Red (88%)
- Green (79%)
- Blue (73%)



- Red (88%)
- Yellow (82%)
- Blue (73%)



- Cyan (0%)
- Magenta (11%)
- Yellow (17%)
- Black (12%)



- Cyan (12%)
- Magenta (21%)
- Yellow (27%)

Brightness & Saturation Gradients


These gradients show how the YUV color 206.5800, -9.6529, 16.1543 changes by changing the brightness by 10 percent. The first figure shows a shift by +10% for each color and the second figure -10%.

Similar to the brightness gradients but the following saturation gradients show a change of the YUV color 206.5800, -9.6529, 16.1543 by changing the saturation by 10% instead.

 206.5800, -9.6529,
16.1543


 206.5800, -9.6529,
16.1543

255.0000, 0.0000,
0.0000


 179.2810, -9.5055,
15.5396


 253.6320, -5.2416,
1.1997

 152.0960, -8.9213,
14.8248

 126.2100, -8.4845,
14.7248

 101.4980, -8.6265,
13.5953

 77.3130, -8.0423,
12.8805

 54.1280, -7.4581,
12.1657

 32.6440, -6.7265,

10.8362

■ 9.5240, -4.6953,
12.6955

■ 0.0000, 0.0000,
0.0000

■ 206.5800, -9.6529,
16.1543

■ 206.5800, -9.6529,
16.1543

■ 195.7400,
-15.6478, 25.6610

■ 217.4200, -3.6581,
6.6477

■ 185.0140,
-21.2059, 35.0677

■ 228.1460, 1.9000,
-2.7590

■ 173.5870,
-26.9114, 45.0892

■ 239.5730, 7.6055,
-12.7805

■ 162.8610,
-32.4695, 54.4959

■ 246.0300, 4.4222,
-18.4433

■ 152.1350,
-38.0276, 63.9026

■ 141.2950,
-44.0224, 73.4093

■ 130.5690,
-49.5805, 82.8160

■ 119.1420,
-55.2860, 92.8375

■ 115.9960,
-57.1860, 95.5965

Harmonies

Analogous

The Analogous color harmony consists of three colors that are next to each other on the color wheel.



207.8130, -6.3168, 19.4580



206.5800, -9.6529, 16.1543



205.0090, -10.3574, 8.7621

Triad

The Triadic color harmony groups three colors that are evenly spaced from another and form a triangle on the color wheel.



206.5800, -9.6529, 16.1543



201.8190, 1.0752, -18.2583



206.7040, 9.0199, 0.2596

Complementary

The Complementary color scheme is a pair of colors which are on the opposite of each other on the color wheel.



206.5800, -9.6529, 16.1543



205.4200, 9.6529, -16.1543

Split Complementary

Split-complementary colors differ from the complementary color scheme. The scheme consists of three colors, the original color and two neighbors of the complement color.



205.0940, 10.7997, -10.6064



206.5800, -9.6529, 16.1543



202.2900, 6.7590, -21.3023

Square

The Square scheme is like the rectangle color scheme, but the four colors are evenly spaced on the color wheel.



206.5800, -9.6529, 16.1543



202.7830, -4.3300, -11.2107



203.2240, 10.2426, -18.6134



207.9180, 4.4774, 10.5959

Rectangle

The Rectangle color scheme consists of four colors that form a rectangle on the color wheel.



206.5800, -9.6529, 16.1543



204.3780, -10.0464, 2.2995



203.2240, 10.2426, -18.6134



205.9100, 9.9044, -3.4291

Sweetspot

The Sweet Spot groups the original color and five complimentary colors.



206.5800, -9.6529, 16.1543



248.8220, -3.3632, 5.4181



201.0980, 4.8817, 20.9621



124.1530, -2.0474, 3.3738



0.0000, 0.0000, 0.0000



128.0000, 0.0000, 0.0000

Same Dimension

The Same Dimension uses a secret algorithm to generate beautiful new colors.



206.5800, -9.6529, 16.1543



230.4020, -13.0162, 21.5724



217.7330, -15.1514, 6.3732



106.6370, -2.7790, 4.7034



90.7790, -44.7540, 74.7388



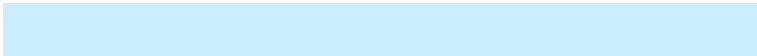
24.9180, -12.2846, 20.2429

Inverse Universe

The Inverse Universe completely reimagines the original color for something new.



205.4200, 9.6529, -16.1543



228.5980, 13.0162, -21.5724



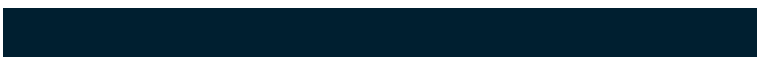
194.2670, 15.1514, -6.3732



106.3630, 2.7790, -4.7034



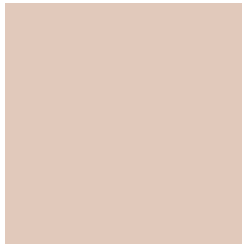
85.2210, 44.7540, -74.7388



23.6690, 11.9952, -20.7577

Previews

White Background



This preview shows how the YUV color 206.5800, -9.6529, 16.1543 looks on a white background.

Color Contrast Check

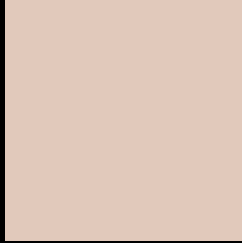
Large Text (above 18pt) WCAG AA × Fail

Any Text WCAG AA × Fail

Large Text (above 18pt) WCAG AAA × Fail

Any Text WCAG AAA × Fail

Black Background



This preview shows how the YUV color 206.5800, -9.6529, 16.1543 looks on a black background.

Color Contrast Check

Large Text (above 18pt) WCAG AA ✓ Pass

Any Text WCAG AA ✓ Pass

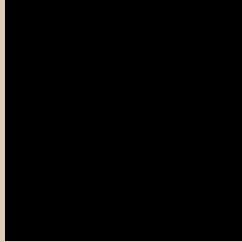
Large Text (above 18pt) WCAG AAA ✓ Pass

Any Text WCAG AAA ✓ Pass

If you want to check with other color combinations, try the [Color Contrast Checker](#).

YUV 206.5800, -9.6529, 16.1543

Background



This preview shows how black text looks on a background with the YUV color 206.5800, -9.6529, 16.1543.



This preview shows how white text looks on a background with the YUV color 206.5800, -9.6529,

Color Blindness Simulation

Color vision deficiency is a very complex topic, and I could not describe the different causes any better than Wikipedia does, so if you want to learn more, you should check out their [article about color blindness](#).

Dichromacy



Original Color

206.5800, -9.6529, 16.1543

Protanopia

205.5680, -8.1680, 6.5179

Deuteranopia

207.0260, -9.3798, 21.9022



Tritanopia

208.0930, 2.4192, 17.4584

Trichromacy



Original Color

206.5800, -9.6529, 16.1543

Protanomaly

206.0630, -8.9051, 9.5917

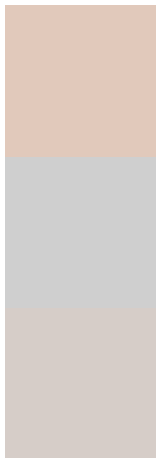
Deuteranomaly

206.7160, -9.2270, 19.5431

Tritanomaly

207.3550, -1.6540, 17.2287

Monochromacy



Original Color

206.5800, -9.6529, 16.1543

Achromatopsia

207.0000, 0.0000, 0.0000

Achromatomaly

207.1210, -3.5107, 6.0329

CSS Examples

Text

The CSS property to change the color of the text to YUV 206.5800, -9.6529, 16.1543 is called "color". The color property can be set on classes, ids or directly on the HTML element.

This example shows how text in the color `rgb(225, 201, 187)` looks like.

```
.text, #text, p{  
    color:rgb(225, 201, 187)  
}
```

If you want to add a text shadow in that color use the text-shadow property, you can generate a text shadow directly with our [CSS Text Shadow Generator](#).

Here you see how black text with a 4 pixel rgb(225, 201, 187) colored shadow looks like.

```
.shadow{ text-shadow: 4px 4px 2px rgb(225, 201, 187) }
```

Border

The CSS property to change the border of an element to YUV 206.5800, -9.6529, 16.1543 is called "border". The border property can be set on classes, ids or directly on the HTML element.

This example shows the color as border, it can be applied via the CSS property "border" or "border-color".

```
.border, #border, table{ border:4px solid rgb(225, 201, 187) }
```


If only the border color should be changed use the property border-color.

```
.border{ border-color:rgb(225, 201, 187) }
```

If you want to add a box shadow in that color use:

Here you see how a box with a 4 pixel rgb(225, 201, 187) colored shadow looks like.

```
.boxshadow{ -moz-box-shadow:4px 4px 4px  
4px rgb(225, 201, 187); -webkit-box-  
shadow:4px 4px 4px 4px rgb(225, 201, 187);  
box-shadow:4px 4px 4px 4px rgb(225, 201,  
187) }
```

Background

The CSS property to change the background color of an element to YUV 206.5800, -9.6529, 16.1543 is called "background". The background property can be set on classes, ids or directly on the HTML element.

```
.background, #background, body{  
background: rgb(225, 201, 187) }
```

If only the background color should be changed can be used:

```
.background{ background-color: rgb(225,  
201, 187) }
```

This example shows the color as background, it is applied via the CSS property "background".

To optimize and compress your CSS code, you can use our [online CSS compressor and optimizer](#) based on csstidy. If you want to create a linear or radial gradient as background or border, check our [CSS Gradient Generator](#).

Hey! You found this booklet interesting? Support Converting Colors with the new Membership Option!

The pro membership hides all ads, plus gives you double the colors in the color bucket, and more awesome pro features!

[Learn more, Memberships starting at \\$2.50/m!](#)

**Follow me
on Twitter!**

@ConvertingColor