

Converting Colors

YUV(206.6480, -16.0955,
29.2497)

Have a look what the booklet for
YUV(206.6480, -16.0955, 29.2497)
contains.

YUV(206.6480, -16.0955, 29.2497)	3
<i>Conversions</i>	4
<i>Details</i>	6
<i>Harmonies</i>	12
<i>Previews</i>	24
<i>Color Blindness Simulation</i>	28
<i>CSS Examples</i>	31

Color

**YUV(206.6480, -16.0955,
29.2497)**

Conversions

Conversions Part 1

Format	Color
Hex	F0C4AE
RGB	240, 196, 174
RGB Percent	94%, 77%, 68%
CMY	0.0588, 0.2314, 0.3176
CMYK	0.00, 0.18, 0.27, 0.06
HSL	20°, 69%, 81%
HSV	20°, 27%, 94%
XYZ	63.3151, 61.0611, 48.4933
YIQ	206.6480, 33.2860, 2.4860

Conversions

Conversions Part 2

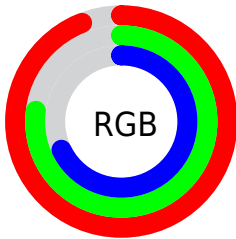
Format	Color
R _Y B	240, 207, 174
Decimal	15778990
CIE Lab	82.41, 12.49, 16.94
CIE LCh	82, 21.046, 53.603
Yxy	61.0611, 0.3663, 0.3532
Android (android.graphics.Color)	4293969070 (0xFFFF0C4AE)
YUV	206.6480, -16.0955, 29.2497
Hunter-Lab	78.1416, 7.8837, 17.9048

Details

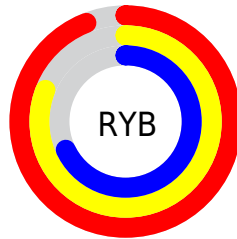
The YUV color $206.6480, -16.0955, 29.2497$ is a light color, and the websafe version is hex FFCCCC . A complement of this color would be $207.3520, 16.0955, -29.2497$, and the grayscale version is $207.0000, 0.0000, 0.0000$.

A 20% lighter version of the original color is $250.9760, -10.3412, 3.5290$, and $151.9790, -14.7796, 27.2054$ is the 20% darker color. If you saturate the color by 10%, you get $194.5200, -21.9484, 39.8860$, and if you desaturate by 10%, it is $218.7760, -10.2426, 18.6134$.

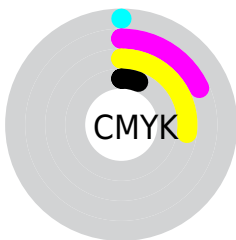
Distribution



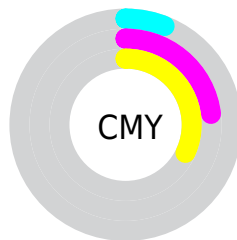
- Red (94%)
- Green (77%)
- Blue (68%)



- Red (94%)
- Yellow (81%)
- Blue (68%)



- Cyan (0%)
- Magenta (18%)
- Yellow (27%)
- Black (6%)



- Cyan (6%)
- Magenta (23%)
- Yellow (32%)

Brightness & Saturation Gradients

These gradients show how the YUV color 206.6480, -16.0955, 29.2497 changes by changing the brightness by 10 percent. The first figure shows a shift by +10% for each color and the second figure -10%.

Similar to the brightness gradients but the following saturation gradients show a change of the YUV color 206.6480, -16.0955, 29.2497 by changing the saturation by 10% instead.

206.6480,
-16.0955, 29.2497

206.6480,
-16.0955, 29.2497

255.0000, 0.0000,
0.0000

179.0500,
-15.8006, 28.0202

250.9760,
-10.3412, 3.5290

151.9790,
-14.7796, 27.2054

126.3810,
-14.4848, 25.9759

100.8970,
-13.7532, 24.6463

76.4130, -13.0216,
23.3168

53.3310, -11.9952,
20.7577

31.2770, -13.4476,

19.9281

■ 9.2690, -4.5696,
19.0581

■ 0.0000, 0.0000,
0.0000

■ 206.6480,
-16.0955, 29.2497

■ 206.6480,
-16.0955, 29.2497

■ 194.5200,
-21.9484, 39.8860

■ 218.7760,
-10.2426, 18.6134

■ 182.3920,
-27.8013, 50.5222

■ 230.9040, -4.3897,
7.9772

■ 170.2640,
-33.6542, 61.1585

■ 243.0320, 1.4632,
-2.6591

■ 158.1360,
-39.5070, 71.7947

■ 250.5150, 2.2111,
-9.2217

■ 146.0080,
-45.3599, 82.4310

■ 133.8800,
-51.2128, 93.0672

■ 121.7520,
-57.0657, 103.7035

■ 118.7200,
-58.5290, 106.3626

Harmonies

Analogous

The Analogous color harmony consists of three colors that are next to each other on the color wheel.



208.2170, -8.9810, 34.0127



206.6480, -16.0955, 29.2497



204.7730, -19.1151, 17.7391

Triad

The Triadic color harmony groups three colors that are evenly spaced from another and form a triangle on the color wheel.



206.6480, -16.0955, 29.2497



198.0300, 0.9712, -31.5983



206.1580, 17.1771, -2.7696

Complementary

The Complementary color scheme is a pair of colors which are on the opposite of each other on the color wheel.



206.6480, -16.0955, 29.2497



207.3520, 16.0955, -29.2497

Split Complementary

Split-complementary colors differ from the complementary color scheme. The scheme consists of three colors, the original color and two neighbors of the complement color.



202.8350, 20.2943, -22.6573



206.6480, -16.0955, 29.2497



197.3200, 11.1812, -39.7456

Square

The Square scheme is like the rectangle color scheme, but the four colors are evenly spaced on the color wheel.



206.6480, -16.0955, 29.2497



200.3710, -9.5499, -16.9884



199.1770, 18.1537, -36.1122



208.4440, 10.1341, 16.2736

Rectangle

The Rectangle color scheme consists of four colors that form a rectangle on the color wheel.



206.6480, -16.0955, 29.2497



203.6360, -18.0615, 6.4582



199.1770, 18.1537, -36.1122



205.4560, 18.5092, -10.0469

Sweetspot

The Sweet Spot groups the original color and five complimentary colors.



206.6480, -16.0955, 29.2497



244.5020, -4.6845, 9.2067



198.7500, 9.4903, 36.1763



121.2350, -3.0739, 5.9329



0.0000, 0.0000, 0.0000



128.0000, 0.0000, 0.0000

Same Dimension

The Same Dimension uses a secret algorithm to generate beautiful new colors.



206.6480, -16.0955, 29.2497



212.5520, -20.4851, 37.2269



226.0190, -25.6454, 12.2613



113.9360, -2.9264, 5.3181



90.8230, -44.7757, 81.7162



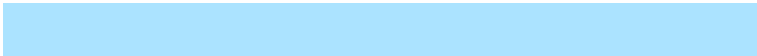
27.8970, -13.7532, 24.6463

Inverse Universe

The Inverse Universe completely reimagines the original color for something new.



207.3520, 16.0955, -29.2497



213.4480, 20.4851, -37.2269



187.9810, 25.6454, -12.2613



114.0640, 2.9264, -5.3181



92.5900, 45.0651, -81.2014



28.1030, 13.7532, -24.6463

Previews

White Background



This preview shows how the YUV color 206.6480, -16.0955, 29.2497 looks on a white background.

Color Contrast Check

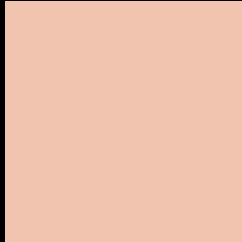
Large Text (above 18pt) WCAG AA × Fail

Any Text WCAG AA × Fail

Large Text (above 18pt) WCAG AAA × Fail

Any Text WCAG AAA × Fail

Black Background



This preview shows how the YUV color 206.6480, -16.0955, 29.2497 looks on a black background.

Color Contrast Check

Large Text (above 18pt) WCAG AA ✓ Pass

Any Text WCAG AA ✓ Pass

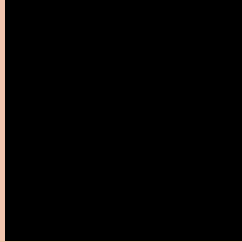
Large Text (above 18pt) WCAG AAA ✓ Pass

Any Text WCAG AAA ✓ Pass

If you want to check with other color combinations, try the [Color Contrast Checker](#).

YUV 206.6480, -16.0955, 29.2497

Background



This preview shows how black text looks on a background with the YUV color 206.6480, -16.0955, 29.2497.



This preview shows how white text looks on a background with the YUV color 206.6480, -16.0955, 29.2497.

Color Blindness Simulation

Color vision deficiency is a very complex topic, and I could not describe the different causes any better than Wikipedia does, so if you want to learn more, you should check out their [article about color blindness](#).

Dichromacy



Original Color

206.6480, -16.0955, 29.2497

Protanopia

204.9120, -13.2676, 8.8472

Deuteranopia

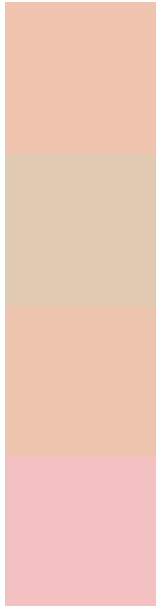
206.0390, -15.7952, 26.2758



Tritanopia

208.5570, -1.2606, 31.0835

Trichromacy



Original Color

206.6480, -16.0955, 29.2497

Protanomaly

205.7280, -14.1629, 16.0245

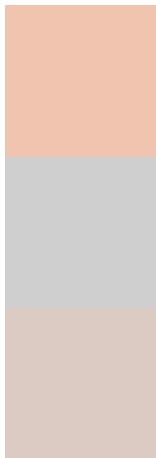
Deuteranomaly

206.3380, -15.9426, 26.8906

Tritanomaly

208.0640, -6.9336, 30.6389

Monochromacy



Original Color

206.6480, -16.0955, 29.2497

Achromatopsia

207.0000, 0.0000, 0.0000

Achromatomaly

206.8720, -5.8529, 10.6363

CSS Examples

Text

The CSS property to change the color of the text to YUV 206.6480, -16.0955, 29.2497 is called "color". The color property can be set on classes, ids or directly on the HTML element.

This example shows how text in the color `rgb(240, 196, 174)` looks like.

```
.text, #text, p{  
    color:rgb(240, 196, 174)  
}
```

If you want to add a text shadow in that color use the text-shadow property, you can generate a text shadow directly with our [CSS Text Shadow Generator](#).

Here you see how black text with a 4 pixel rgb(240, 196, 174) colored shadow looks like.

```
.shadow{ text-shadow: 4px 4px 2px rgb(240, 196, 174) }
```

Border

The CSS property to change the border of an element to YUV 206.6480, -16.0955, 29.2497 is called "border".

The border property can be set on classes, ids or directly on the HTML element.

This example shows the color as border, it can be applied via the CSS property "border" or "border-color".

```
.border, #border, table{ border:4px solid rgb(240, 196, 174) }
```


If only the border color should be changed use the property border-color.

```
.border{ border-color:rgb(240, 196, 174) }
```

If you want to add a box shadow in that color use:

Here you see how a box with a 4 pixel rgb(240, 196, 174) colored shadow looks like.

```
.boxshadow{ -moz-box-shadow:4px 4px 4px  
4px rgb(240, 196, 174); -webkit-box-  
shadow:4px 4px 4px 4px rgb(240, 196, 174);  
box-shadow:4px 4px 4px 4px rgb(240, 196,  
174) }
```

Background

The CSS property to change the background color of an element to YUV 206.6480, -16.0955, 29.2497 is called "background". The background property can be set on classes, ids or directly on the HTML element.

```
.background, #background, body{  
background: rgb(240, 196, 174) }
```

If only the background color should be changed can be used:

```
.background{ background-color: rgb(240,  
196, 174) }
```

This example shows the color as background, it is applied via the CSS property "background".

To optimize and compress your CSS code, you can use our [online CSS compressor and optimizer](#) based on csstidy. If you want to create a linear or radial gradient as background or border, check our [CSS Gradient Generator](#).

Hey! You found this booklet interesting? Support Converting Colors with the new Membership Option!

The pro membership hides all ads, plus gives you double the colors in the color bucket, and more awesome pro features!

[Learn more, Memberships starting at \\$2.50/m!](#)

**Follow me
on Twitter!**

@ConvertingColor