

Converting Colors

YUV(207.2420, -7.0213,
12.0658)

Have a look what the booklet for
YUV(207.2420, -7.0213, 12.0658)
contains.

YUV(207.2420, -7.0213, 12.0658)	3
<i>Conversions</i>	4
<i>Details</i>	6
<i>Harmonies</i>	12
<i>Previews</i>	24
<i>Color Blindness Simulation</i>	28
<i>CSS Examples</i>	31

Color

**YUV(207.2420, -7.0213,
12.0658)**

Conversions

Conversions Part 1

Format	Color
Hex	DDCBC1
RGB	221, 203, 193
RGB Percent	87%, 80%, 76%
CMY	0.1333, 0.2039, 0.2431
CMYK	0.00, 0.08, 0.13, 0.13
HSL	21°, 29%, 81%
HSV	21°, 13%, 87%
XYZ	60.8004, 61.9343, 59.2021
YIQ	207.2420, 13.9380, 0.7060

Conversions

Conversions Part 2

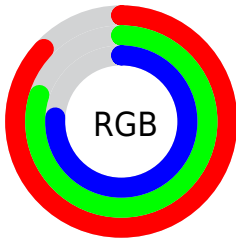
Format	Color
R _Y B	221, 209, 193
Decimal	14535617
CIE Lab	82.88, 4.62, 7.24
CIE LCh	83, 8.588, 57.483
Yxy	61.9343, 0.3342, 0.3404
Android (android.graphics.Color)	4292725697 (0xFFDDCBC1)
YUV	207.2420, -7.0213, 12.0658
Hunter-Lab	78.6983, 0.1826, 10.4870

Details

The YUV color $207.2420, -7.0213, 12.0658$ is a light color, and the websafe version is hex `CCCCCC`. A complement of this color would be $206.7580, 7.0213, -12.0658$, and the grayscale version is $207.0000, 0.0000, 0.0000$.

A 20% lighter version of the original color is $254.3160, -2.6208, 0.5999$, and $153.0570, -6.4371, 11.3510$ is the 20% darker color. If you saturate the color by 10%, you get $196.5160, -12.5794, 21.4725$, and if you desaturate by 10%, it is $217.9680, -1.4632, 2.6591$.

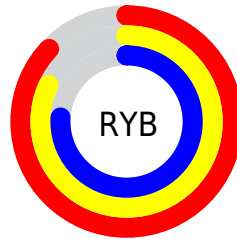
Distribution



Red (87%)

Green (80%)

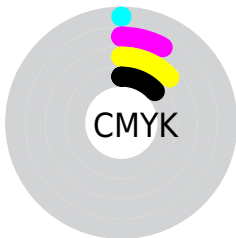
Blue (76%)



Red (87%)

Yellow (82%)

Blue (76%)

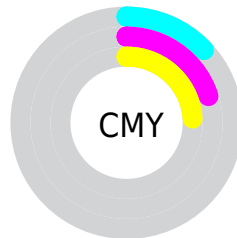


Cyan (0%)

Magenta (8%)

Yellow (13%)

Black (13%)



Cyan (13%)

Magenta (20%)

Yellow (24%)

Brightness & Saturation Gradients

These gradients show how the YUV color 207.2420, -7.0213, 12.0658 changes by changing the brightness by 10 percent. The first figure shows a shift by +10% for each color and the second figure -10%.

Similar to the brightness gradients but the following saturation gradients show a change of the YUV color 207.2420, -7.0213, 12.0658 by changing the saturation by 10% instead.

■ 207.2420, -7.0213,
12.0658

■ 207.2420, -7.0213,
12.0658

255.0000, 0.0000,
0.0000

■ 179.9430, -6.8739,
11.4510

■ 254.3160, -2.6208,
0.5999

■ 153.0570, -6.4371,
11.3510

■ 126.7580, -6.2897,
10.7362

■ 101.8720, -5.8529,
10.6363

■ 77.5730, -5.7055,
10.0215

■ 54.9750, -5.4107,
8.7919

■ 33.6760, -5.2633,

8.1771

■ 10.3990, -5.1267,
11.0511

■ 0.0000, 0.0000,
0.0000

■ 207.2420, -7.0213,
12.0658

■ 207.2420, -7.0213,
12.0658

■ 196.5160,
-12.5794, 21.4725

■ 217.9680, -1.4632,
2.6591

■ 185.7900,
-18.1375, 30.8792

■ 228.6940, 4.0949,
-6.7476

■ 174.4770,
-23.4062, 40.8007

■ 239.5510, 7.6164,
-16.2692

■ 163.7510,
-28.9642, 50.2074

■ 244.8340, 5.0118,
-20.9024

■ 153.0250,
-34.5223, 59.6141

■ 142.1850,
-40.5172, 69.1208

■ 131.4590,
-46.0753, 78.5275

■ 120.1460,
-51.3440, 88.4490

■ 112.4520,
-55.4388, 95.1966

Harmonies

Analogous

The Analogous color harmony consists of three colors that are next to each other on the color wheel.



207.6490, -4.2640, 14.3398



207.2420, -7.0213, 12.0658



206.5680, -8.1680, 6.5179

Triad

The Triadic color harmony groups three colors that are evenly spaced from another and form a triangle on the color wheel.



207.2420, -7.0213, 12.0658



203.7380, 0.6222, -12.9252



207.4220, 6.6940, -0.3701

Complementary

The Complementary color scheme is a pair of colors which are on the opposite of each other on the color wheel.



207.2420, -7.0213, 12.0658



206.7580, 7.0213, -12.0658

Split Complementary

Split-complementary colors differ from the complementary color scheme. The scheme consists of three colors, the original color and two neighbors of the complement color.



205.7200, 8.0260, -7.6474



207.2420, -7.0213, 12.0658



204.0520, 4.4114, -14.9546

Square

The Square scheme is like the rectangle color scheme, but the four colors are evenly spaced on the color wheel.



207.2420, -7.0213, 12.0658



204.3320, -3.6147, -7.3072



205.1600, 7.3161, -13.2953



207.6680, 3.6147, 7.3072

Rectangle

The Rectangle color scheme consists of four colors that form a rectangle on the color wheel.



207.2420, -7.0213, 12.0658



205.4750, -7.1362, 2.2144



205.1600, 7.3161, -13.2953



206.6390, 7.5730, -2.3144

Sweetspot

The Sweet Spot groups the original color and five complimentary colors.



207.2420, -7.0213, 12.0658



249.7510, -2.3422, 4.6034



203.4240, 3.7350, 15.4142



124.2670, -1.6106, 3.2738



0.0000, 0.0000, 0.0000



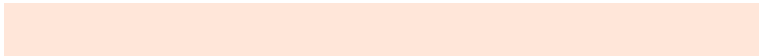
128.0000, 0.0000, 0.0000

Same Dimension

The Same Dimension uses a secret algorithm to generate beautiful new colors.



207.2420, -7.0213, 12.0658



235.9930, -9.3635, 16.6691



215.4600, -11.0728, 4.8586



104.6370, -2.7790, 4.7034



88.1210, -43.4437, 74.4389



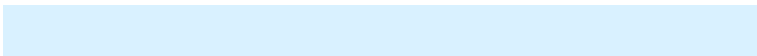
23.1460, -11.4110, 20.0430

Inverse Universe

The Inverse Universe completely reimagines the original color for something new.



206.7580, 7.0213, -12.0658



235.4200, 9.6529, -16.1543



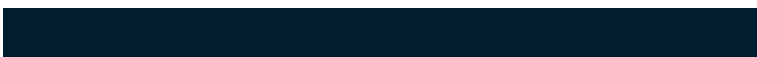
198.5400, 11.0728, -4.8586



104.3630, 2.7790, -4.7034



84.8790, 43.4437, -74.4389



22.8540, 11.4110, -20.0430

Previews

White Background



This preview shows how the YUV color 207.2420, -7.0213, 12.0658 looks on a white background.

Color Contrast Check

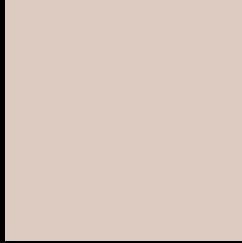
Large Text (above 18pt) WCAG AA × Fail

Any Text WCAG AA × Fail

Large Text (above 18pt) WCAG AAA × Fail

Any Text WCAG AAA × Fail

Black Background



This preview shows how the YUV color 207.2420, -7.0213, 12.0658 looks on a black background.

Color Contrast Check

Large Text (above 18pt) WCAG AA ✓ Pass

Any Text WCAG AA ✓ Pass

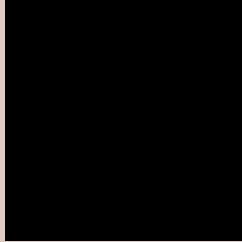
Large Text (above 18pt) WCAG AAA ✓ Pass

Any Text WCAG AAA ✓ Pass

If you want to check with other color combinations, try the [Color Contrast Checker](#).

YUV 207.2420, -7.0213, 12.0658

Background



This preview shows how black text looks on a background with the YUV color 207.2420, -7.0213, 12.0658.



This preview shows how white text looks on a background with the YUV color 207.2420, -7.0213,

Color Blindness Simulation

Color vision deficiency is a very complex topic, and I could not describe the different causes any better than Wikipedia does, so if you want to learn more, you should check out their [article about color blindness](#).

Dichromacy



Original Color

207.2420, -7.0213, 12.0658

Protanopia

206.7250, -6.2734, 5.5032

Deuteranopia

207.9980, -6.9010, 20.1728



Tritanopia

208.8860, 3.0142, 13.2550

Trichromacy



Original Color

207.2420, -7.0213, 12.0658

Protanomaly

207.0350, -6.4263, 7.8623

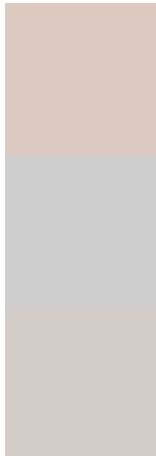
Deuteranomaly

207.3890, -6.6008, 17.1988

Tritanomaly

208.2620, -0.6222, 12.9252

Monochromacy



Original Color

207.2420, -7.0213, 12.0658

Achromatopsia

207.0000, 0.0000, 0.0000

Achromatomaly

207.3380, -2.6316, 4.0886

CSS Examples

Text

The CSS property to change the color of the text to YUV 207.2420, -7.0213, 12.0658 is called "color". The color property can be set on classes, ids or directly on the HTML element.

This example shows how text in the color `rgb(221, 203, 193)` looks like.

```
.text, #text, p{  
    color:rgb(221, 203, 193)  
}
```

If you want to add a text shadow in that color use the text-shadow property, you can generate a text shadow directly with our [CSS Text Shadow Generator](#).

Here you see how black text with a 4 pixel rgb(221, 203, 193) colored shadow looks like.

```
.shadow{ text-shadow: 4px 4px 2px rgb(221, 203, 193) }
```

Border

The CSS property to change the border of an element to YUV 207.2420, -7.0213, 12.0658 is called "border". The border property can be set on classes, ids or directly on the HTML element.

This example shows the color as border, it can be applied via the CSS property "border" or "border-color".

```
.border, #border, table{ border:4px solid rgb(221, 203, 193) }
```


If only the border color should be changed use the property border-color.

```
.border{ border-color:rgb(221, 203, 193) }
```

If you want to add a box shadow in that color use:

Here you see how a box with a 4 pixel rgb(221, 203, 193) colored shadow looks like.

```
.boxshadow{ -moz-box-shadow:4px 4px 4px  
4px rgb(221, 203, 193); -webkit-box-  
shadow:4px 4px 4px 4px rgb(221, 203, 193);  
box-shadow:4px 4px 4px 4px rgb(221, 203,  
193) }
```

Background

The CSS property to change the background color of an element to YUV 207.2420, -7.0213, 12.0658 is called "background". The background property can be set on classes, ids or directly on the HTML element.

```
.background, #background, body{  
background: rgb(221, 203, 193) }
```

If only the background color should be changed can be used:

```
.background{ background-color: rgb(221,  
203, 193) }
```

This example shows the color as background, it is applied via the CSS property "background".

To optimize and compress your CSS code, you can use our [online CSS compressor and optimizer](#) based on csstidy. If you want to create a linear or radial gradient as background or border, check our [CSS Gradient Generator](#).

Hey! You found this booklet interesting? Support Converting Colors with the new Membership Option!

The pro membership hides all ads, plus gives you double the colors in the color bucket, and more awesome pro features!

[Learn more, Memberships starting at \\$2.50/m!](#)

**Follow me
on Twitter!**

@ConvertingColor