

Converting Colors

YUV(207.3660, -1.6594,
18.9730)

Have a look what the booklet for
YUV(207.3660, -1.6594, 18.9730)
contains.

YUV(207.3660, -1.6594, 18.9730)	3
<i>Conversions</i>	4
<i>Details</i>	6
<i>Harmonies</i>	12
<i>Previews</i>	24
<i>Color Blindness Simulation</i>	28
<i>CSS Examples</i>	31

Color

**YUV(207.3660, -1.6594,
18.9730)**

Conversions

Conversions Part 1

Format	Color
Hex	E5C5CC
RGB	229, 197, 204
RGB Percent	90%, 77%, 80%
CMY	0.1020, 0.2275, 0.2000
CMYK	0.00, 0.14, 0.11, 0.10
HSL	347°, 38%, 84%
HSV	347°, 14%, 90%
XYZ	63.1784, 60.9502, 65.5614
YIQ	207.3660, 16.8250, 8.9610

Conversions

Conversions Part 2

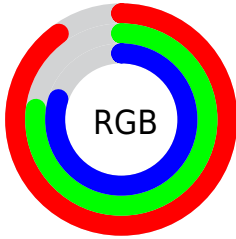
Format	Color
R _Y B	229, 197, 204
Decimal	15058380
CIE Lab	82.35, 12.43, 0.69
CIE LCh	82, 12.450, 3.162
Yxy	60.9502, 0.3331, 0.3213
Android (android.graphics.Color)	4293248460 (0xFFE5C5CC)
YUV	207.3660, -1.6594, 18.9730
Hunter-Lab	78.0706, 7.8272, 4.8594

Details

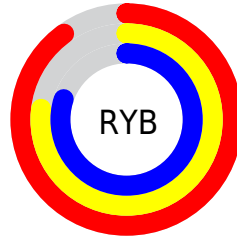
The YUV color $207.3660, -1.6594, 18.9730$ is a light color, and the websafe version is hex FFCCCC . A complement of this color would be $218.6340, 1.6594, -18.9730$, and the grayscale version is $207.0000, 0.0000, 0.0000$.

A 20% lighter version of the original color is $254.4130, 0.2894, 0.5148$, and $152.7680, -1.3646, 17.7435$ is the 20% darker color. If you saturate the color by 10%, you get $191.8130, -2.8658, 32.6130$, and if you desaturate by 10%, it is $222.9190, -0.4531, 5.3330$.

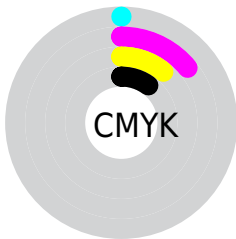
Distribution



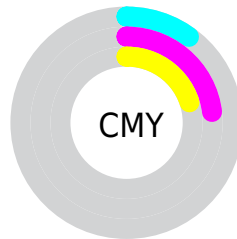
- Red (90%)
- Green (77%)
- Blue (80%)



- Red (90%)
- Yellow (77%)
- Blue (80%)



- Cyan (0%)
- Magenta (14%)
- Yellow (11%)
- Black (10%)



- Cyan (10%)
- Magenta (23%)
- Yellow (20%)

Brightness & Saturation Gradients

These gradients show how the YUV color 207.3660, -1.6594, 18.9730 changes by changing the brightness by 10 percent. The first figure shows a shift by +10% for each color and the second figure -10%.

Similar to the brightness gradients but the following saturation gradients show a change of the YUV color 207.3660, -1.6594, 18.9730 by changing the saturation by 10% instead.

■ 207.3660, -1.6594,
18.9730

■ 207.3660, -1.6594,
18.9730

255.0000, 0.0000,
0.0000

■ 180.0670, -1.5120,
18.3582

254.4130, 0.2894,
0.5148

■ 152.7680, -1.3646,
17.7435

■ 127.3550, -1.6540,
17.2287

■ 102.0560, -1.5066,
16.6139

■ 77.7570, -1.3592,
15.9991

■ 54.8600, -0.9170,
14.1548

■ 33.2620, -0.6222,

12.9252

■ 9.7680, -1.3646,
17.7435

■ 0.0000, 0.0000,
0.0000

■ 207.3660, -1.6594,
18.9730

■ 207.3660, -1.6594,
18.9730

■ 191.8130, -2.8658,
32.6130

■ 222.9190, -0.4531,
5.3330

■ 176.2600, -4.0722,
46.2530

■ 238.4720, 0.7533,
-8.3069

■ 160.7070, -5.2786,
59.8930

■ 247.2260, 3.8326,
-15.9842

■ 145.1540, -6.4849,
73.5329

■ 130.3020, -7.5439,
86.5581

■ 114.7490, -8.7503,
100.1981

■ 99.1960, -9.9566,
113.8381

■ 83.6430, -11.1630,
127.4781

■ 74.1710, -11.9163,
135.7850

Harmonies

Analogous

The Analogous color harmony consists of three colors that are next to each other on the color wheel.



207.2280, 4.3246, 12.9550



207.3660, -1.6594, 18.9730



206.9980, -6.9010, 20.1728

Triad

The Triadic color harmony groups three colors that are evenly spaced from another and form a triangle on the color wheel.



207.3660, -1.6594, 18.9730



202.9860, -8.8671, -2.6187



202.7510, 10.9688, -18.1986

Complementary

The Complementary color scheme is a pair of colors which are on the opposite of each other on the color wheel.



207.3660, -1.6594, 18.9730



218.6340, 1.6594, -18.9730

Split Complementary

Split-complementary colors differ from the complementary color scheme. The scheme consists of three colors, the original color and two neighbors of the complement color.



201.2190, 7.7800, -22.1171



207.3660, -1.6594, 18.9730



201.8860, -3.8878, -13.0550

Square

The Square scheme is like the rectangle color scheme, but the four colors are evenly spaced on the color wheel.



207.3660, -1.6594, 18.9730



204.1830, -10.9362, 7.7325



201.1500, 2.3910, -20.3026



204.3330, 11.6678, -9.0620

Rectangle

The Rectangle color scheme consists of four colors that form a rectangle on the color wheel.



207.3660, -1.6594, 18.9730



206.5910, -9.6584, 17.8987



201.1500, 2.3910, -20.3026



202.2130, 10.2480, -20.3578

Sweetspot

The Sweet Spot groups the original color and five complimentary colors.



207.3660, -1.6594, 18.9730



248.2180, -0.6005, 5.9478



208.1230, 10.2924, 12.1701



123.3210, -0.1583, 4.1035



0.0000, 0.0000, 0.0000



128.0000, 0.0000, 0.0000

Same Dimension

The Same Dimension uses a secret algorithm to generate beautiful new colors.



207.3660, -1.6594, 18.9730



225.8830, -2.4073, 25.5356



211.8510, -7.3215, 15.0397



106.9300, -0.4585, 7.0774



57.9670, -9.3507, 106.1459



16.5030, -2.7130, 30.2539

Inverse Universe

The Inverse Universe completely reimagines the original color for something new.



207.3660, -1.6594, 18.9730



225.8830, -2.4073, 25.5356



214.1490, 7.3215, -15.0397



106.9300, -0.4585, 7.0774



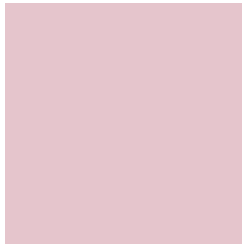
57.9670, -9.3507, 106.1459



16.5030, -2.7130, 30.2539

Previews

White Background



This preview shows how the YUV color 207.3660, -1.6594, 18.9730 looks on a white background.

Color Contrast Check

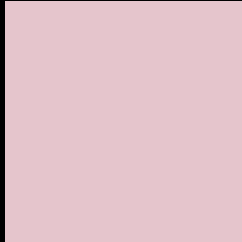
Large Text (above 18pt) WCAG AA × Fail

Any Text WCAG AA × Fail

Large Text (above 18pt) WCAG AAA × Fail

Any Text WCAG AAA × Fail

Black Background



This preview shows how the YUV color 207.3660, -1.6594, 18.9730 looks on a black background.

Color Contrast Check

Large Text (above 18pt) WCAG AA ✓ Pass

Any Text WCAG AA ✓ Pass

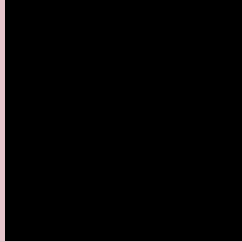
Large Text (above 18pt) WCAG AAA ✓ Pass

Any Text WCAG AAA ✓ Pass

If you want to check with other color combinations, try the [Color Contrast Checker](#).

YUV 207.3660, -1.6594, 18.9730

Background



This preview shows how black text looks on a background with the YUV color 207.3660, -1.6594, 18.9730.



This preview shows how white text looks on a background with the YUV color 207.3660, -1.6594,

Color Blindness Simulation

Color vision deficiency is a very complex topic, and I could not describe the different causes any better than Wikipedia does, so if you want to learn more, you should check out their [article about color blindness](#).

Dichromacy



Original Color

207.3660, -1.6594, 18.9730

Protanopia

205.6520, 1.1576, 2.0592

Deuteranopia

206.7570, -1.3592, 15.9991



Tritanopia

207.8760, 1.5401, 19.4027

Trichromacy



Original Color

207.3660, -1.6594, 18.9730

Protanomaly

206.1690, 0.4097, 8.6218

Deuteranomaly

207.0560, -1.5066, 16.6139

Tritanomaly

207.5340, 0.2297, 19.7027

Monochromacy



Original Color

207.3660, -1.6594, 18.9730

Achromatopsia

207.0000, 0.0000, 0.0000

Achromatomaly

206.9300, -0.4585, 7.0774

CSS Examples

Text

The CSS property to change the color of the text to YUV 207.3660, -1.6594, 18.9730 is called "color". The color property can be set on classes, ids or directly on the HTML element.

This example shows how text in the color `rgb(229, 197, 204)` looks like.

```
.text, #text, p{  
    color:rgb(229, 197, 204)  
}
```

If you want to add a text shadow in that color use the text-shadow property, you can generate a text shadow directly with our [CSS Text Shadow Generator](#).

Here you see how black text with a 4 pixel rgb(229, 197, 204) colored shadow looks like.

```
.shadow{ text-shadow: 4px 4px 2px rgb(229, 197, 204) }
```

Border

The CSS property to change the border of an element to YUV 207.3660, -1.6594, 18.9730 is called "border". The border property can be set on classes, ids or directly on the HTML element.

This example shows the color as border, it can be applied via the CSS property "border" or "border-color".

```
.border, #border, table{ border:4px solid rgb(229, 197, 204) }
```


If only the border color should be changed use the property border-color.

```
.border{ border-color:rgb(229, 197, 204) }
```

If you want to add a box shadow in that color use:

Here you see how a box with a 4 pixel rgb(229, 197, 204) colored shadow looks like.

```
.boxshadow{ -moz-box-shadow:4px 4px 4px  
4px rgb(229, 197, 204); -webkit-box-  
shadow:4px 4px 4px 4px rgb(229, 197, 204);  
box-shadow:4px 4px 4px 4px rgb(229, 197,  
204) }
```

Background

The CSS property to change the background color of an element to YUV 207.3660, -1.6594, 18.9730 is called "background". The background property can be set on classes, ids or directly on the HTML element.

```
.background, #background, body{  
background: rgb(229, 197, 204) }
```

If only the background color should be changed can be used:

```
.background{ background-color: rgb(229,  
197, 204) }
```

This example shows the color as background, it is applied via the CSS property "background".

To optimize and compress your CSS code, you can use our [online CSS compressor and optimizer](#) based on csstidy. If you want to create a linear or radial gradient as background or border, check our [CSS Gradient Generator](#).

Hey! You found this booklet interesting? Support Converting Colors with the new Membership Option!

The pro membership hides all ads, plus gives you double the colors in the color bucket, and more awesome pro features!

[Learn more, Memberships starting at \\$2.50/m!](#)

**Follow me
on Twitter!**

@ConvertingColor