

Converting Colors

YUV(207.7280, -14.1629,
16.0245)

Have a look what the booklet for
YUV(207.7280, -14.1629, 16.0245)
contains.

YUV(207.7280, -14.1629, 16.0245)	3
<i>Conversions</i>	4
<i>Details</i>	6
<i>Harmonies</i>	12
<i>Previews</i>	24
<i>Color Blindness Simulation</i>	28
<i>CSS Examples</i>	31

Color

**YUV(207.7280, -14.1629,
16.0245)**

Conversions

Conversions Part 1

Format	Color
Hex	E2CCB3
RGB	226, 204, 179
RGB Percent	89%, 80%, 70%
CMY	0.1137, 0.2000, 0.2980
CMYK	0.00, 0.10, 0.21, 0.11
HSL	32°, 45%, 79%
HSV	32°, 21%, 89%
XYZ	61.0936, 62.6092, 51.5126
YIQ	207.7280, 21.1370, -3.1110

Conversions

Conversions Part 2

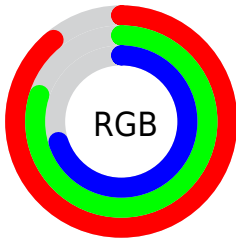
Format	Color
R _Y B	220, 226, 179
Decimal	14863539
CIE Lab	83.24, 3.77, 15.26
CIE LCh	83, 15.714, 76.136
Yxy	62.6092, 0.3487, 0.3573
Android (android.graphics.Color)	4293053619 (0xFFE2CCB3)
YUV	207.7280, -14.1629, 16.0245
Hunter-Lab	79.1259, -0.6496, 16.7892

Details

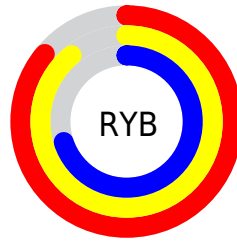
The YUV color $207.7280, -14.1629, 16.0245$ is a light color, and the websafe version is hex `CCCCCC`. A complement of this color would be $197.2720, 14.1629, -16.0245$, and the grayscale version is $208.0000, 0.0000, 0.0000$.

A 20% lighter version of the original color is $252.7200, -8.7360, 1.9996$, and $153.2440, -13.4313, 14.6950$ is the 20% darker color. If you saturate the color by 10%, you get $198.6490, -21.0260, 23.9868$, and if you desaturate by 10%, it is $216.8070, -7.2999, 8.0623$.

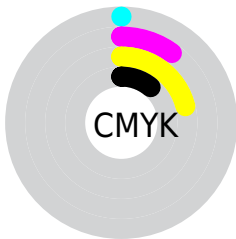
Distribution



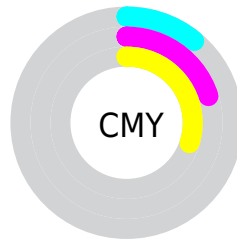
- Red (89%)
- Green (80%)
- Blue (70%)



- Red (86%)
- Yellow (89%)
- Blue (70%)



- Cyan (0%)
- Magenta (10%)
- Yellow (21%)
- Black (11%)



- Cyan (11%)
- Magenta (20%)
- Yellow (30%)

Brightness & Saturation Gradients

These gradients show how the YUV color 207.7280, -14.1629, 16.0245 changes by changing the brightness by 10 percent. The first figure shows a shift by +10% for each color and the second figure -10%.

Similar to the brightness gradients but the following saturation gradients show a change of the YUV color 207.7280, -14.1629, 16.0245 by changing the saturation by 10% instead.

■ 207.7280,
-14.1629, 16.0245

■ 207.7280,
-14.1629, 16.0245

255.0000, 0.0000,
0.0000

■ 180.4290,
-14.0155, 15.4098

■ 252.7200, -8.7360,
1.9996

■ 153.2440,
-13.4313, 14.6950

■ 127.0590,
-12.8471, 13.9803

■ 101.8740,
-12.2629, 13.2655

■ 77.6890, -11.6787,
12.5507

■ 55.2050, -10.9471,
11.2212

■ 33.4930, -11.0890,

10.0916

■ 11.5730, -5.7055,
10.0215

■ 0.0000, 0.0000,
0.0000

■ 207.7280,
-14.1629, 16.0245

■ 207.7280,
-14.1629, 16.0245

■ 198.6490,
-21.0260, 23.9868

■ 216.8070, -7.2999,
8.0623

■ 190.2710,
-27.7416, 31.3343

■ 225.1850, -0.5842,
0.7148

■ 181.1920,
-34.6047, 39.2966

■ 234.2640, 6.2788,
-7.2475

■ 172.8140,
-41.3203, 46.6441

■ 241.0460, 6.8793,
-13.1953

■ 163.7350,
-48.1834, 54.6064

■ 246.3290, 4.2748,
-17.8285

■ 155.2430,
-55.3358, 62.0539

■ 146.2780,
-61.7621, 69.9162

■ 138.0140,
-68.0409, 77.1637

Harmonies

Analogous

The Analogous color harmony consists of three colors that are next to each other on the color wheel.



209.2820, -10.9850, 23.4317



207.7280, -14.1629, 16.0245



206.1780, -13.3988, 4.2289

Triad

The Triadic color harmony groups three colors that are evenly spaced from another and form a triangle on the color wheel.



207.7280, -14.1629, 16.0245



202.1320, 6.3439, -28.1798



209.7590, 8.9928, 8.9814

Complementary

The Complementary color scheme is a pair of colors which are on the opposite of each other on the color wheel.



207.7280, -14.1629, 16.0245



197.2720, 14.1629, -16.0245

Split Complementary

Split-complementary colors differ from the complementary color scheme. The scheme consists of three colors, the original color and two neighbors of the complement color.



208.2240, 13.6936, -5.4584



207.7280, -14.1629, 16.0245



203.0380, 12.3063, -27.2203

Square

The Square scheme is like the rectangle color scheme, but the four colors are evenly spaced on the color wheel.



207.7280, -14.1629, 16.0245



203.1130, -1.5347, -21.1471



205.4780, 15.0473, -19.7132



210.4030, 2.2663, 19.8176

Rectangle

The Rectangle color scheme consists of four colors that form a rectangle on the color wheel.



207.7280, -14.1629, 16.0245



204.8070, -10.7509, -5.0927



205.4780, 15.0473, -19.7132



209.4810, 10.6089, 3.9632

Sweetspot

The Sweet Spot groups the original color and five complimentary colors.



207.7280, -14.1629, 16.0245



249.1810, -4.5262, 5.1033



195.6750, 3.1182, 26.5950



124.0390, -2.4842, 3.4738



0.0000, 0.0000, 0.0000



128.0000, 0.0000, 0.0000

Same Dimension

The Same Dimension uses a secret algorithm to generate beautiful new colors.



207.7280, -14.1629, 16.0245



230.0940, -19.2733, 21.8426



220.3430, -20.3821, 4.0842



107.8110, -3.3578, 3.6738



107.8020, -53.1464, 59.8096



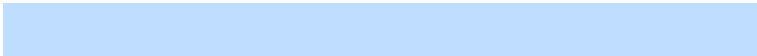
29.6140, -14.5997, 16.1245

Inverse Universe

The Inverse Universe completely reimagines the original color for something new.



197.2720, 14.1629, -16.0245



215.9060, 19.2733, -21.8426



184.6570, 20.3821, -4.0842



105.1890, 3.3578, -3.6738



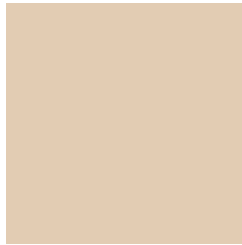
68.1980, 53.1464, -59.8096



18.9730, 14.3103, -16.6393

Previews

White Background



This preview shows how the YUV color 207.7280, -14.1629, 16.0245 looks on a white background.

Color Contrast Check

Large Text (above 18pt) WCAG AA × Fail

Any Text WCAG AA × Fail

Large Text (above 18pt) WCAG AAA × Fail

Any Text WCAG AAA × Fail

Black Background



This preview shows how the YUV color 207.7280, -14.1629, 16.0245 looks on a black background.

Color Contrast Check

Large Text (above 18pt) WCAG AA ✓ Pass

Any Text WCAG AA ✓ Pass

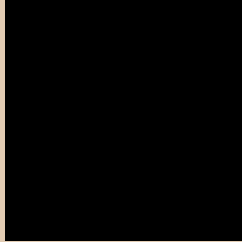
Large Text (above 18pt) WCAG AAA ✓ Pass

Any Text WCAG AAA ✓ Pass

If you want to check with other color combinations, try the [Color Contrast Checker](#).

YUV 207.7280, -14.1629, 16.0245

Background



This preview shows how black text looks on a background with the YUV color 207.7280, -14.1629, 16.0245.



This preview shows how white text looks on a background with the YUV color 207.7280, -14.1629, 16.0245.

Color Blindness Simulation

Color vision deficiency is a very complex topic, and I could not describe the different causes any better than Wikipedia does, so if you want to learn more, you should check out their [article about color blindness](#).

Dichromacy



Original Color

207.7280, -14.1629, 16.0245

Protanopia

206.9120, -13.2676, 8.8472

Deuteranopia

208.7830, -14.1900, 24.7463



Tritanopia

209.9790, 1.9824, 17.5584

Trichromacy



Original Color

207.7280, -14.1629, 16.0245

Protanomaly

207.2220, -13.4204, 11.2063

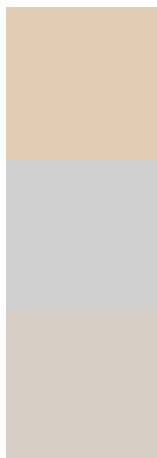
Deuteranomaly

208.1740, -13.8898, 21.7724

Tritanomaly

209.3720, -4.1274, 17.2138

Monochromacy



Original Color

207.7280, -14.1629, 16.0245

Achromatopsia

208.0000, 0.0000, 0.0000

Achromatomaly

208.2520, -5.5472, 5.9180

CSS Examples

Text

The CSS property to change the color of the text to YUV 207.7280, -14.1629, 16.0245 is called "color". The color property can be set on classes, ids or directly on the HTML element.

This example shows how text in the color `rgb(226, 204, 179)` looks like.

```
.text, #text, p{  
    color:rgb(226, 204, 179)  
}
```

If you want to add a text shadow in that color use the text-shadow property, you can generate a text shadow directly with our [CSS Text Shadow Generator](#).

Here you see how black text with a 4 pixel rgb(226, 204, 179) colored shadow looks like.

```
.shadow{ text-shadow: 4px 4px 2px rgb(226, 204, 179) }
```

Border

The CSS property to change the border of an element to YUV 207.7280, -14.1629, 16.0245 is called "border".

The border property can be set on classes, ids or directly on the HTML element.

This example shows the color as border, it can be applied via the CSS property "border" or "border-color".

```
.border, #border, table{ border:4px solid rgb(226, 204, 179) }
```


If only the border color should be changed use the property `border-color`.

```
.border{ border-color:rgb(226, 204, 179) }
```

If you want to add a box shadow in that color use:

Here you see how a box with a 4 pixel `rgb(226, 204, 179)` colored shadow looks like.

```
.boxshadow{ -moz-box-shadow:4px 4px 4px  
4px rgb(226, 204, 179); -webkit-box-  
shadow:4px 4px 4px 4px rgb(226, 204, 179);  
box-shadow:4px 4px 4px 4px rgb(226, 204,  
179) }
```

Background

The CSS property to change the background color of an element to YUV 207.7280, -14.1629, 16.0245 is called "background". The background property can be set on classes, ids or directly on the HTML element.

```
.background, #background, body{  
background: rgb(226, 204, 179) }
```

If only the background color should be changed can be used:

```
.background{ background-color: rgb(226,  
204, 179) }
```

This example shows the color as background, it is applied via the CSS property "background".

To optimize and compress your CSS code, you can use our [online CSS compressor and optimizer](#) based on csstidy. If you want to create a linear or radial gradient as background or border, check our [CSS Gradient Generator](#).

Hey! You found this booklet interesting? Support Converting Colors with the new Membership Option!

The pro membership hides all ads, plus gives you double the colors in the color bucket, and more awesome pro features!

[Learn more, Memberships starting at \\$2.50/m!](#)

**Follow me
on Twitter!**

@ConvertingColor