

Converting Colors

YUV(207.8690, -11.2744,
22.9169)

Have a look what the booklet for
YUV(207.8690, -11.2744, 22.9169)
contains.

YUV(207.8690, -11.2744, 22.9169)	3
<i>Conversions</i>	4
<i>Details</i>	6
<i>Harmonies</i>	12
<i>Previews</i>	24
<i>Color Blindness Simulation</i>	28
<i>CSS Examples</i>	31

Color

**YUV(207.8690, -11.2744,
22.9169)**

Conversions

Conversions Part 1

Format	Color
Hex	EAC7B9
RGB	234, 199, 185
RGB Percent	92%, 78%, 73%
CMY	0.0824, 0.2196, 0.2745
CMYK	0.00, 0.15, 0.21, 0.08
HSL	17°, 54%, 82%
HSV	17°, 21%, 92%
XYZ	63.1121, 61.8421, 54.5093
YIQ	207.8690, 25.3540, 3.0660

Conversions

Conversions Part 2

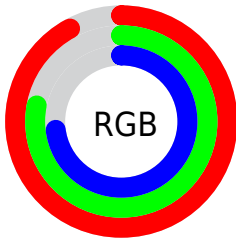
Format	Color
RYB	234, 205, 185
Decimal	15386553
CIELab	82.83, 10.22, 11.59
CIElCh	83, 15.452, 48.592
Yxy	61.8421, 0.3517, 0.3446
Android (android.graphics.Color)	4293576633 (0xFFEAC7B9)
YUV	207.8690, -11.2744, 22.9169
Hunter-Lab	78.6397, 5.6351, 13.9508

Details

The YUV color $207.8690, -11.2744, 22.9169$ is a light color, and the websafe version is hex FFCCCC . A complement of this color would be $211.1310, 11.2744, -22.9169$, and the grayscale version is $208.0000, 0.0000, 0.0000$.

A 20% lighter version of the original color is $253.4040, -6.1152, 1.3997$, and $153.3850, -10.5428, 21.5874$ is the 20% darker color. If you saturate the color by 10%, you get $195.2680, -16.4011, 33.9680$, and if you desaturate by 10%, it is $220.4700, -6.1477, 11.8658$.

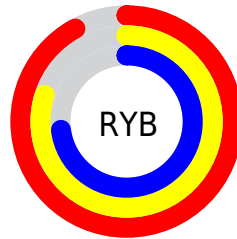
Distribution



Red (92%)

Green (78%)

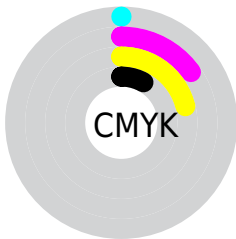
Blue (73%)



Red (92%)

Yellow (80%)

Blue (73%)

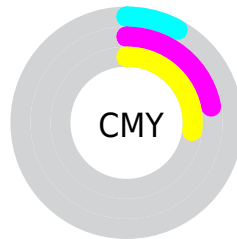


Cyan (0%)

Magenta (15%)

Yellow (21%)

Black (8%)



Cyan (8%)

Magenta (22%)

Yellow (27%)

Brightness & Saturation Gradients

These gradients show how the YUV color 207.8690, -11.2744, 22.9169 changes by changing the brightness by 10 percent. The first figure shows a shift by +10% for each color and the second figure -10%.

Similar to the brightness gradients but the following saturation gradients show a change of the YUV color 207.8690, -11.2744, 22.9169 by changing the saturation by 10% instead.

■ 207.8690,
-11.2744, 22.9169

■ 207.8690,
-11.2744, 22.9169

255.0000, 0.0000,
0.0000

■ 180.5700,
-11.1270, 22.3021

■ 253.4040, -6.1152,
1.3997

■ 153.3850,
-10.5428, 21.5874

■ 127.2000, -9.9586,
20.8726

■ 102.3030, -9.5164,
19.0283

■ 78.0040, -9.3690,
18.4135

■ 54.6340, -8.2006,
16.9840

■ 33.0360, -7.9057,

15.7544

■ 10.1440, -5.0010,
17.4137

■ 0.0000, 0.0000,
0.0000

■ 207.8690,
-11.2744, 22.9169

■ 207.8690,
-11.2744, 22.9169

■ 195.2680,
-16.4011, 33.9680

■ 220.4700, -6.1477,
11.8658

■ 183.1400,
-22.2540, 44.6042

■ 232.5980, -0.2948,
1.2296

■ 170.5390,
-27.3807, 55.6553

■ 245.1990, 4.8319,
-9.8215

■ 157.8240,
-32.9442, 66.8064

■ 248.7210, 3.0955,
-12.9103

■ 145.2230,
-38.0709, 77.8574

■ 133.2090,
-43.4870, 88.3937

■ 120.4940,
-49.0505, 99.5448

■ 109.2950,
-53.8824, 109.3663

Harmonies

Analogous

The Analogous color harmony consists of three colors that are next to each other on the color wheel.



209.0740, -5.4595, 24.4911



207.8690, -11.2744, 22.9169



206.1300, -13.8681, 14.7950

Triad

The Triadic color harmony groups three colors that are evenly spaced from another and form a triangle on the color wheel.



207.8690, -11.2744, 22.9169



201.3410, -0.6611, -21.3471



206.8220, 13.3988, -4.2289

Complementary

The Complementary color scheme is a pair of colors which are on the opposite of each other on the color wheel.



207.8690, -11.2744, 22.9169



211.1310, 11.2744, -22.9169

Split Complementary

Split-complementary colors differ from the complementary color scheme. The scheme consists of three colors, the original color and two neighbors of the complement color.



204.3750, 14.6051, -17.8689



207.8690, -11.2744, 22.9169



201.2460, 6.7807, -28.2797

Square

The Square scheme is like the rectangle color scheme, but the four colors are evenly spaced on the color wheel.



207.8690, -11.2744, 22.9169



202.8710, -7.8244, -10.4109



202.3370, 12.1589, -26.6055



208.9440, 8.4086, 9.6961

Rectangle

The Rectangle color scheme consists of four colors that form a rectangle on the color wheel.



207.8690, -11.2744, 22.9169



205.7870, -13.6990, 7.2028



202.3370, 12.1589, -26.6055



206.3160, 14.1412, -9.0471

Sweetspot

The Sweet Spot groups the original color and five complimentary colors.



207.8690, -11.2744, 22.9169



246.8330, -3.3687, 7.1625



203.6410, 8.0650, 26.6248



122.8650, -1.9054, 4.5034



0.0000, 0.0000, 0.0000



128.0000, 0.0000, 0.0000

Same Dimension

The Same Dimension uses a secret algorithm to generate beautiful new colors.



207.8690, -11.2744, 22.9169



220.7020, -14.6431, 30.0793



221.9570, -18.2198, 10.5617



111.0500, -2.4896, 5.2182



84.6430, -41.7290, 84.5051



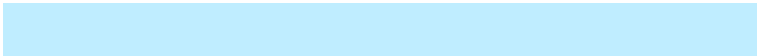
24.9510, -12.3008, 25.4760

Inverse Universe

The Inverse Universe completely reimagines the original color for something new.



211.1310, 11.2744, -22.9169



225.2980, 14.6431, -30.0793



197.0430, 18.2198, -10.5617



111.9500, 2.4897, -5.2181



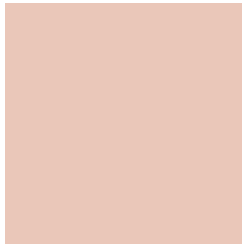
96.3570, 41.7290, -84.5051



28.4620, 12.5902, -24.9612

Previews

White Background



This preview shows how the YUV color 207.8690, -11.2744, 22.9169 looks on a white background.

Color Contrast Check

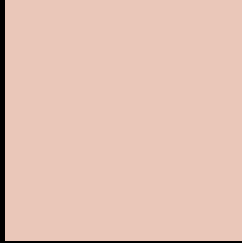
Large Text (above 18pt) WCAG AA × Fail

Any Text WCAG AA × Fail

Large Text (above 18pt) WCAG AAA × Fail

Any Text WCAG AAA × Fail

Black Background



This preview shows how the YUV color 207.8690, -11.2744, 22.9169 looks on a black background.

Color Contrast Check

Large Text (above 18pt) WCAG AA ✓ Pass

Any Text WCAG AA ✓ Pass

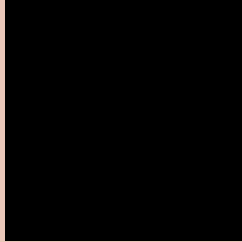
Large Text (above 18pt) WCAG AAA ✓ Pass

Any Text WCAG AAA ✓ Pass

If you want to check with other color combinations, try the [Color Contrast Checker](#).

YUV 207.8690, -11.2744, 22.9169

Background



This preview shows how black text looks on a background with the YUV color 207.8690, -11.2744, 22.9169.



This preview shows how white text looks on a background with the YUV color 207.8690, -11.2744, 22.9169.

Color Blindness Simulation

Color vision deficiency is a very complex topic, and I could not describe the different causes any better than Wikipedia does, so if you want to learn more, you should check out their [article about color blindness](#).

Dichromacy



Original Color

207.8690, -11.2744, 22.9169

Protanopia

206.4540, -8.6048, 6.6178

Deuteranopia

207.8690, -11.2744, 22.9169



Tritanopia

209.2680, 0.3609, 24.3210

Trichromacy



Original Color

207.8690, -11.2744, 22.9169

Protanomaly

206.6720, -9.2053, 12.5657

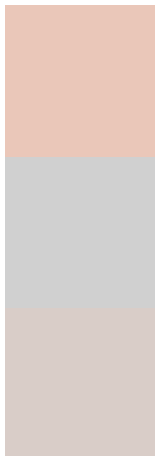
Deuteranomaly

207.8690, -11.2744, 22.9169

Tritanomaly

208.5300, -3.7123, 24.0912

Monochromacy



Original Color

207.8690, -11.2744, 22.9169

Achromatopsia

208.0000, 0.0000, 0.0000

Achromatomaly

208.0180, -3.9529, 7.8772

CSS Examples

Text

The CSS property to change the color of the text to YUV 207.8690, -11.2744, 22.9169 is called "color". The color property can be set on classes, ids or directly on the HTML element.

This example shows how text in the color `rgb(234, 199, 185)` looks like.

```
.text, #text, p{  
    color:rgb(234, 199, 185)  
}
```

If you want to add a text shadow in that color use the text-shadow property, you can generate a text shadow directly with our [CSS Text Shadow Generator](#).

Here you see how black text with a 4 pixel rgb(234, 199, 185) colored shadow looks like.

```
.shadow{ text-shadow: 4px 4px 2px rgb(234, 199, 185) }
```

Border

The CSS property to change the border of an element to YUV 207.8690, -11.2744, 22.9169 is called "border".

The border property can be set on classes, ids or directly on the HTML element.

This example shows the color as border, it can be applied via the CSS property "border" or "border-color".

```
.border, #border, table{ border:4px solid rgb(234, 199, 185) }
```


If only the border color should be changed use the property `border-color`.

```
.border{ border-color:rgb(234, 199, 185) }
```

If you want to add a box shadow in that color use:

Here you see how a box with a 4 pixel `rgb(234, 199, 185)` colored shadow looks like.

```
.boxshadow{ -moz-box-shadow:4px 4px 4px  
4px rgb(234, 199, 185); -webkit-box-  
shadow:4px 4px 4px 4px rgb(234, 199, 185);  
box-shadow:4px 4px 4px 4px rgb(234, 199,  
185) }
```

Background

The CSS property to change the background color of an element to YUV 207.8690, -11.2744, 22.9169 is called "background". The background property can be set on classes, ids or directly on the HTML element.

```
.background, #background, body{  
background: rgb(234, 199, 185) }
```

If only the background color should be changed can be used:

```
.background{ background-color: rgb(234,  
199, 185) }
```

This example shows the color as background, it is applied via the CSS property "background".

To optimize and compress your CSS code, you can use our [online CSS compressor and optimizer](#) based on csstidy. If you want to create a linear or radial gradient as background or border, check our [CSS Gradient Generator](#).

Hey! You found this booklet interesting? Support Converting Colors with the new Membership Option!

The pro membership hides all ads, plus gives you double the colors in the color bucket, and more awesome pro features!

[Learn more, Memberships starting at \\$2.50/m!](#)

**Follow me
on Twitter!**

@ConvertingColor