

Converting Colors

YUV(207.8850, -12.2683,
15.0099)

Have a look what the booklet for
YUV(207.8850, -12.2683, 15.0099)
contains.

YUV(207.8850, -12.2683, 15.0099)	3
<i>Conversions</i>	4
<i>Details</i>	6
<i>Harmonies</i>	12
<i>Previews</i>	24
<i>Color Blindness Simulation</i>	28
<i>CSS Examples</i>	31

Color

**YUV(207.8850, -12.2683,
15.0099)**

Conversions

Conversions Part 1

Format	Color
Hex	E1CCB7
RGB	225, 204, 183
RGB Percent	88%, 80%, 72%
CMY	0.1176, 0.2000, 0.2824
CMYK	0.00, 0.09, 0.19, 0.12
HSL	30°, 41%, 80%
HSV	30°, 19%, 88%
XYZ	61.1914, 62.6122, 53.6600
YIQ	207.8850, 19.2570, -2.0790

Conversions

Conversions Part 2

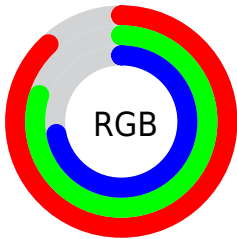
Format	Color
R _Y B	225, 225, 183
Decimal	14798007
CIE Lab	83.24, 3.99, 13.12
CIE LCh	83, 13.716, 73.093
Yxy	62.6122, 0.3448, 0.3528
Android (android.graphics.Color)	4292988087 (0xFFE1CCB7)
YUV	207.8850, -12.2683, 15.0099
Hunter-Lab	79.1279, -0.4355, 15.1824

Details

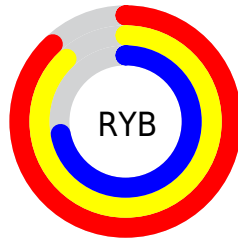
The YUV color $207.8850, -12.2683, 15.0099$ is a light color, and the websafe version is hex $CCCCCC$. A complement of this color would be $200.1150, 12.2683, -15.0099$, and the grayscale version is $208.0000, 0.0000, 0.0000$.

A 20% lighter version of the original color is $253.1760, -6.9888, 1.5996$, and $153.4010, -11.5367, 13.6803$ is the 20% darker color. If you saturate the color by 10%, you get $198.9200, -18.6946, 22.8722$, and if you desaturate by 10%, it is $216.9640, -5.4053, 7.0476$.

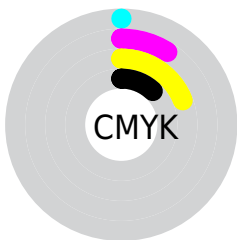
Distribution



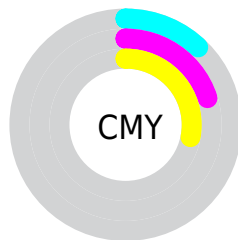
- Red (88%)
- Green (80%)
- Blue (72%)



- Red (88%)
- Yellow (88%)
- Blue (72%)



- Cyan (0%)
- Magenta (9%)
- Yellow (19%)
- Black (12%)



- Cyan (12%)
- Magenta (20%)
- Yellow (28%)

Brightness & Saturation Gradients

These gradients show how the YUV color 207.8850, -12.2683, 15.0099 changes by changing the brightness by 10 percent. The first figure shows a shift by +10% for each color and the second figure -10%.

Similar to the brightness gradients but the following saturation gradients show a change of the YUV color 207.8850, -12.2683, 15.0099 by changing the saturation by 10% instead.

■ 207.8850,
-12.2683, 15.0099

■ 207.8850,
-12.2683, 15.0099

255.0000, 0.0000,
0.0000

■ 180.5860,
-12.1209, 14.3951

■ 253.1760, -6.9888,
1.5996

■ 153.4010,
-11.5367, 13.6803

■ 127.5150,
-11.0999, 13.5803

■ 102.3300,
-10.5157, 12.8656

■ 78.1450, -9.9315,
12.1508

■ 55.5470, -9.6367,
10.9213

■ 33.9490, -9.3419,

9.6917

■ 11.5730, -5.7055,
10.0215

■ 0.0000, 0.0000,
0.0000

■ 207.8850,
-12.2683, 15.0099

■ 207.8850,
-12.2683, 15.0099

■ 198.9200,
-18.6946, 22.8722

■ 216.9640, -5.4053,
7.0476

■ 189.8410,
-25.5576, 30.8344

■ 226.5160, 0.7316,
-1.3295

■ 180.2890,
-31.6945, 39.2115

■ 235.5950, 7.5947,
-9.2918

■ 171.2100,
-38.5575, 47.1738

■ 242.5080, 6.1586,
-15.3545

■ 162.2450,
-44.9838, 55.0361

■ 246.0300, 4.4222,
-18.4433

■ 153.1660,
-51.8468, 62.9984

■ 143.6140,
-57.9837, 71.3755

■ 134.5350,
-64.8468, 79.3378

■ 133.6060,
-65.8678, 80.1525

Harmonies

Analogous

The Analogous color harmony consists of three colors that are next to each other on the color wheel.



208.7270, -9.2324, 21.2874



207.8850, -12.2683, 15.0099



206.2320, -11.9464, 5.0585

Triad

The Triadic color harmony groups three colors that are evenly spaced from another and form a triangle on the color wheel.



207.8850, -12.2683, 15.0099



203.1110, 4.8753, -23.7763



209.2210, 8.2720, 6.8222

Complementary

The Complementary color scheme is a pair of colors which are on the opposite of each other on the color wheel.



207.8850, -12.2683, 15.0099



200.1150, 12.2683, -15.0099

Split Complementary

Split-complementary colors differ from the complementary color scheme. The scheme consists of three colors, the original color and two neighbors of the complement color.



208.0560, 11.8044, -6.1881



207.8850, -12.2683, 15.0099



203.7780, 9.9694, -24.3613

Square

The Square scheme is like the rectangle color scheme, but the four colors are evenly spaced on the color wheel.



207.8850, -12.2683, 15.0099



203.3200, -2.1298, -16.9436



205.9190, 12.8579, -17.4690



209.7940, 2.5666, 16.8437

Rectangle

The Rectangle color scheme consists of four colors that form a rectangle on the color wheel.



207.8850, -12.2683, 15.0099



205.4590, -9.5933, -3.0335



205.9190, 12.8579, -17.4690



209.2420, 9.7407, 2.4188

Sweetspot

The Sweet Spot groups the original color and five complimentary colors.



207.8850, -12.2683, 15.0099



248.5940, -4.2368, 5.6181



197.9520, 2.9817, 23.7211



124.0390, -2.4842, 3.4738



0.0000, 0.0000, 0.0000



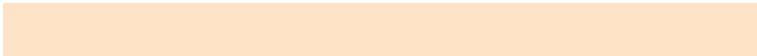
128.0000, 0.0000, 0.0000

Same Dimension

The Same Dimension uses a secret algorithm to generate beautiful new colors.



207.8850, -12.2683, 15.0099



232.1800, -16.3577, 20.0131



220.2120, -18.3455, 4.1991



107.8110, -3.3578, 3.6738



104.2800, -51.4100, 62.8984



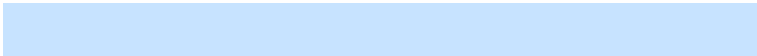
28.4400, -14.0209, 17.1541

Inverse Universe

The Inverse Universe completely reimagines the original color for something new.



200.1150, 12.2683, -15.0099



221.8200, 16.3577, -20.0131



187.7880, 18.3455, -4.1991



105.7760, 3.0684, -4.1886



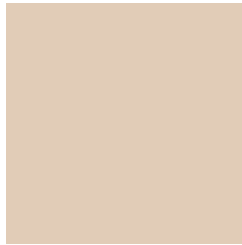
71.7200, 51.4100, -62.8984



19.5600, 14.0209, -17.1541

Previews

White Background



This preview shows how the YUV color 207.8850, -12.2683, 15.0099 looks on a white background.

Color Contrast Check

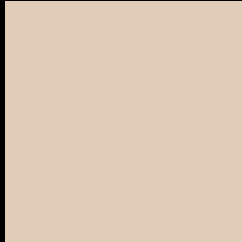
Large Text (above 18pt) WCAG AA × Fail

Any Text WCAG AA × Fail

Large Text (above 18pt) WCAG AAA × Fail

Any Text WCAG AAA × Fail

Black Background



This preview shows how the YUV color 207.8850, -12.2683, 15.0099 looks on a black background.

Color Contrast Check

Large Text (above 18pt) WCAG AA ✓ Pass

Any Text WCAG AA ✓ Pass

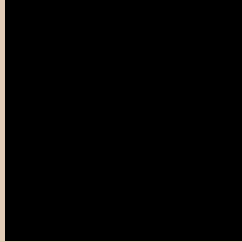
Large Text (above 18pt) WCAG AAA ✓ Pass

Any Text WCAG AAA ✓ Pass

If you want to check with other color combinations, try the [Color Contrast Checker](#).

YUV 207.8850, -12.2683, 15.0099

Background



This preview shows how black text looks on a background with the YUV color 207.8850, -12.2683, 15.0099.



This preview shows how white text looks on a background with the YUV color 207.8850, -12.2683, 15.0099.

Color Blindness Simulation

Color vision deficiency is a very complex topic, and I could not describe the different causes any better than Wikipedia does, so if you want to learn more, you should check out their [article about color blindness](#).

Dichromacy



Original Color

207.8850, -12.2683, 15.0099

Protanopia

207.0690, -11.3730, 7.8325

Deuteranopia

208.9400, -12.2954, 23.7316



Tritanopia

209.7940, 2.5666, 16.8437

Trichromacy



Original Color

207.8850, -12.2683, 15.0099

Protanomaly

207.3790, -11.5258, 10.1916

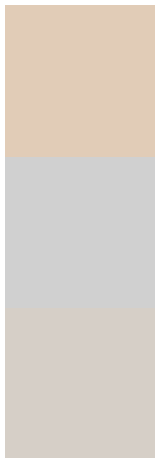
Deuteranomaly

208.3310, -11.9952, 20.7577

Tritanomaly

209.3010, -3.1064, 16.3990

Monochromacy



Original Color

207.8850, -12.2683, 15.0099

Achromatopsia

208.0000, 0.0000, 0.0000

Achromatomaly

208.1810, -4.5262, 5.1033

CSS Examples

Text

The CSS property to change the color of the text to YUV 207.8850, -12.2683, 15.0099 is called "color". The color property can be set on classes, ids or directly on the HTML element.

This example shows how text in the color `rgb(225, 204, 183)` looks like.

```
.text, #text, p{  
    color:rgb(225, 204, 183)  
}
```

If you want to add a text shadow in that color use the text-shadow property, you can generate a text shadow directly with our [CSS Text Shadow Generator](#).

Here you see how black text with a 4 pixel rgb(225, 204, 183) colored shadow looks like.

```
.shadow{ text-shadow: 4px 4px 2px rgb(225, 204, 183) }
```

Border

The CSS property to change the border of an element to YUV 207.8850, -12.2683, 15.0099 is called "border".

The border property can be set on classes, ids or directly on the HTML element.

This example shows the color as border, it can be applied via the CSS property "border" or "border-color".

```
.border, #border, table{ border:4px solid rgb(225, 204, 183) }
```


If only the border color should be changed use the property border-color.

```
.border{ border-color:rgb(225, 204, 183) }
```

If you want to add a box shadow in that color use:

Here you see how a box with a 4 pixel rgb(225, 204, 183) colored shadow looks like.

```
.boxshadow{ -moz-box-shadow:4px 4px 4px  
4px rgb(225, 204, 183); -webkit-box-  
shadow:4px 4px 4px 4px rgb(225, 204, 183);  
box-shadow:4px 4px 4px 4px rgb(225, 204,  
183) }
```

Background

The CSS property to change the background color of an element to YUV 207.8850, -12.2683, 15.0099 is called "background". The background property can be set on classes, ids or directly on the HTML element.

```
.background, #background, body{  
background: rgb(225, 204, 183) }
```

If only the background color should be changed can be used:

```
.background{ background-color: rgb(225,  
204, 183) }
```

This example shows the color as background, it is applied via the CSS property "background".

To optimize and compress your CSS code, you can use our [online CSS compressor and optimizer](#) based on csstidy. If you want to create a linear or radial gradient as background or border, check our [CSS Gradient Generator](#).

Hey! You found this booklet interesting? Support Converting Colors with the new Membership Option!

The pro membership hides all ads, plus gives you double the colors in the color bucket, and more awesome pro features!

[Learn more, Memberships starting at \\$2.50/m!](#)

**Follow me
on Twitter!**

@ConvertingColor