

Converting Colors

YUV(208.2340, -14.9054,
20.8428)

Have a look what the booklet for
YUV(208.2340, -14.9054, 20.8428)
contains.

YUV(208.2340, -14.9054, 20.8428)	3
<i>Conversions</i>	4
<i>Details</i>	6
<i>Harmonies</i>	12
<i>Previews</i>	24
<i>Color Blindness Simulation</i>	28
<i>CSS Examples</i>	31

Color

**YUV(208.2340, -14.9054,
20.8428)**

Conversions

Conversions Part 1

Format	Color
Hex	E8CAB2
RGB	232, 202, 178
RGB Percent	91%, 79%, 70%
CMY	0.0902, 0.2078, 0.3020
CMYK	0.00, 0.13, 0.23, 0.09
HSL	27°, 54%, 80%
HSV	27°, 23%, 91%
XYZ	62.4351, 62.6112, 50.9140
YIQ	208.2340, 25.5840, -1.1040

Conversions

Conversions Part 2

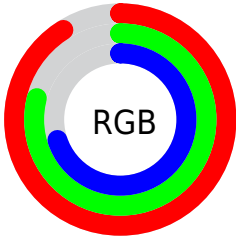
Format	Color
R _Y B	232, 221, 178
Decimal	15256242
CIE Lab	83.24, 6.90, 15.86
CIE LCh	83, 17.298, 66.505
Yxy	62.6112, 0.3548, 0.3558
Android (android.graphics.Color)	4293446322 (0xFFE8CAB2)
YUV	208.2340, -14.9054, 20.8428
Hunter-Lab	79.1273, 2.3722, 17.2393

Details

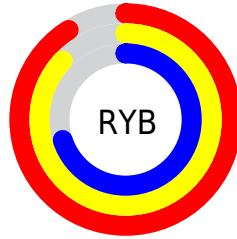
The YUV color $208.2340, -14.9054, 20.8428$ is a light color, and the websafe version is hex FFCCCC . A complement of this color would be $201.7660, 14.9054, -20.8428$, and the grayscale version is $208.0000, 0.0000, 0.0000$.

A 20% lighter version of the original color is $252.6060, -9.1728, 2.0995$, and $153.7500, -14.1738, 19.5132$ is the 20% darker color. If you saturate the color by 10%, you get $197.9810, -21.1896, 29.8347$, and if you desaturate by 10%, it is $218.4870, -8.6211, 11.8509$.

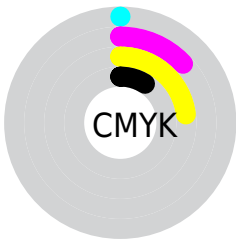
Distribution



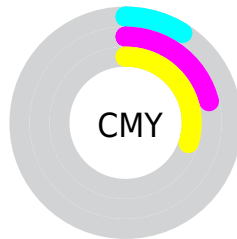
- Red (91%)
- Green (79%)
- Blue (70%)



- Red (91%)
- Yellow (87%)
- Blue (70%)



- Cyan (0%)
- Magenta (13%)
- Yellow (23%)
- Black (9%)



- Cyan (9%)
- Magenta (21%)
- Yellow (30%)

Brightness & Saturation Gradients

These gradients show how the YUV color 208.2340, -14.9054, 20.8428 changes by changing the brightness by 10 percent. The first figure shows a shift by +10% for each color and the second figure -10%.

Similar to the brightness gradients but the following saturation gradients show a change of the YUV color 208.2340, -14.9054, 20.8428 by changing the saturation by 10% instead.

■ 208.2340,
-14.9054, 20.8428

■ 208.2340,
-14.9054, 20.8428

255.0000, 0.0000,
0.0000

■ 180.9350,
-14.7580, 20.2280

■ 252.6060, -9.1728,
2.0995

■ 153.7500,
-14.1738, 19.5132

■ 127.5650,
-13.5895, 18.7985

■ 102.0810,
-12.8579, 17.4690

■ 78.4830, -12.5631,
16.2394

■ 55.1130, -11.3947,
14.8099

■ 33.2870, -11.9735,

13.7803

■ 11.5950, -5.7163,
13.5102

■ 0.0000, 0.0000,
0.0000

■ 208.2340,
-14.9054, 20.8428

■ 208.2340,
-14.9054, 20.8428

■ 197.9810,
-21.1896, 29.8347

■ 218.4870, -8.6211,
11.8509

■ 187.7280,
-27.4739, 38.8265

■ 228.7400, -2.3368,
2.8590

■ 177.3610,
-34.1950, 47.9184

■ 239.1070, 4.3842,
-6.2328

■ 167.1080,
-40.4792, 56.9103

■ 247.5360, 3.6798,
-13.6251

■ 157.4420,
-47.0529, 65.3874

■ 248.1230, 3.3904,
-14.1399

■ 147.1890,
-53.3372, 74.3792

■ 136.9360,
-59.6214, 83.3711

■ 129.8290,
-64.0057, 89.6040

Harmonies

Analogous

The Analogous color harmony consists of three colors that are next to each other on the color wheel.



209.8310, -10.2697, 27.3352



208.2340, -14.9054, 20.8428



206.3420, -15.4516, 9.3471

Triad

The Triadic color harmony groups three colors that are evenly spaced from another and form a triangle on the color wheel.



208.2340, -14.9054, 20.8428



201.5510, 4.1654, -29.4242



209.4210, 11.6244, 4.8928

Complementary

The Complementary color scheme is a pair of colors which are on the opposite of each other on the color wheel.



208.2340, -14.9054, 20.8428



201.7660, 14.9054, -20.8428

Split Complementary

Split-complementary colors differ from the complementary color scheme. The scheme consists of three colors, the original color and two neighbors of the complement color.



207.3480, 15.6044, -11.7062



208.2340, -14.9054, 20.8428



202.1900, 11.7383, -31.7386

Square

The Square scheme is like the rectangle color scheme, but the four colors are evenly spaced on the color wheel.



208.2340, -14.9054, 20.8428



202.7280, -4.3029, -19.9325



204.3740, 16.0846, -25.7610



210.7880, 5.0345, 18.6029

Rectangle

The Rectangle color scheme consists of four colors that form a rectangle on the color wheel.



208.2340, -14.9054, 20.8428



205.4440, -13.5299, -0.3894



204.3740, 16.0846, -25.7610



208.8440, 13.3879, -0.7402

Sweetspot

The Sweet Spot groups the original color and five complimentary colors.



208.2340, -14.9054, 20.8428



247.0780, -4.9685, 6.9476



197.6800, 5.5808, 30.0986



123.2240, -3.0684, 4.1886



0.0000, 0.0000, 0.0000



128.0000, 0.0000, 0.0000

Same Dimension

The Same Dimension uses a secret algorithm to generate beautiful new colors.



208.2340, -14.9054, 20.8428



223.4260, -19.4370, 27.6904



223.4960, -22.4295, 7.4580



109.5230, -3.2158, 4.8033



99.8940, -49.2477, 69.3760



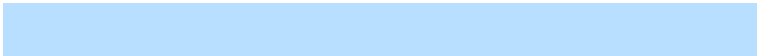
28.7500, -14.1738, 19.5132

Inverse Universe

The Inverse Universe completely reimagines the original color for something new.



201.7660, 14.9054, -20.8428



214.9870, 19.7264, -27.1756



186.5040, 22.4295, -7.4580



108.4770, 3.2158, -4.8033



78.5190, 49.5371, -68.8612



22.2500, 14.1738, -19.5132

Previews

White Background



This preview shows how the YUV color 208.2340, -14.9054, 20.8428 looks on a white background.

Color Contrast Check

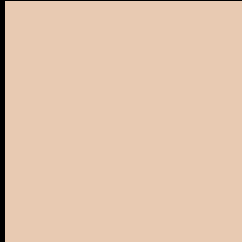
Large Text (above 18pt) WCAG AA × Fail

Any Text WCAG AA × Fail

Large Text (above 18pt) WCAG AAA × Fail

Any Text WCAG AAA × Fail

Black Background



This preview shows how the YUV color 208.2340, -14.9054, 20.8428 looks on a black background.

Color Contrast Check

Large Text (above 18pt) WCAG AA ✓ Pass

Any Text WCAG AA ✓ Pass

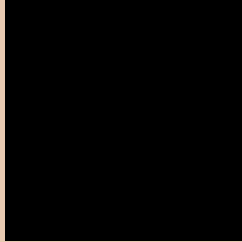
Large Text (above 18pt) WCAG AAA ✓ Pass

Any Text WCAG AAA ✓ Pass

If you want to check with other color combinations, try the [Color Contrast Checker](#).

YUV 208.2340, -14.9054, 20.8428

Background



This preview shows how black text looks on a background with the YUV color 208.2340, -14.9054, 20.8428.



This preview shows how white text looks on a background with the YUV color 208.2340, -14.9054, 20.8428.

20.8428.

Color Blindness Simulation

Color vision deficiency is a very complex topic, and I could not describe the different causes any better than Wikipedia does, so if you want to learn more, you should check out their [article about color blindness](#).

Dichromacy



Original Color

208.2340, -14.9054, 20.8428

Protanopia

206.9120, -13.2676, 8.8472

Deuteranopia

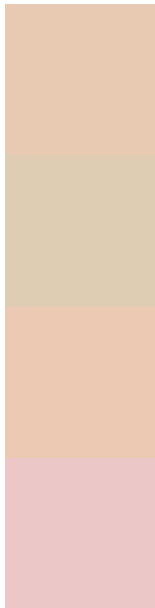
208.8540, -15.2110, 25.5610



Tritanopia

210.3710, 0.8031, 22.4766

Trichromacy



Original Color

208.2340, -14.9054, 20.8428

Protanomaly

207.1190, -13.8627, 13.0506

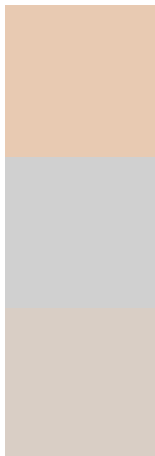
Deuteranomaly

208.8430, -15.2056, 23.8167

Tritanomaly

209.8780, -4.8699, 22.0320

Monochromacy



Original Color

208.2340, -14.9054, 20.8428

Achromatopsia

208.0000, 0.0000, 0.0000

Achromatomaly

208.2630, -5.5527, 7.6623

CSS Examples

Text

The CSS property to change the color of the text to YUV 208.2340, -14.9054, 20.8428 is called "color". The color property can be set on classes, ids or directly on the HTML element.

This example shows how text in the color `rgb(232, 202, 178)` looks like.

```
.text, #text, p{  
    color:rgb(232, 202, 178)  
}
```

If you want to add a text shadow in that color use the text-shadow property, you can generate a text shadow directly with our [CSS Text Shadow Generator](#).

Here you see how black text with a 4 pixel rgb(232, 202, 178) colored shadow looks like.

```
.shadow{ text-shadow: 4px 4px 2px rgb(232, 202, 178) }
```

Border

The CSS property to change the border of an element to YUV 208.2340, -14.9054, 20.8428 is called "border".

The border property can be set on classes, ids or directly on the HTML element.

This example shows the color as border, it can be applied via the CSS property "border" or "border-color".

```
.border, #border, table{ border:4px solid rgb(232, 202, 178) }
```


If only the border color should be changed use the property `border-color`.

```
.border{ border-color:rgb(232, 202, 178) }
```

If you want to add a box shadow in that color use:

Here you see how a box with a 4 pixel `rgb(232, 202, 178)` colored shadow looks like.

```
.boxshadow{ -moz-box-shadow:4px 4px 4px  
4px rgb(232, 202, 178); -webkit-box-  
shadow:4px 4px 4px 4px rgb(232, 202, 178);  
box-shadow:4px 4px 4px 4px rgb(232, 202,  
178) }
```

Background

The CSS property to change the background color of an element to YUV 208.2340, -14.9054, 20.8428 is called "background". The background property can be set on classes, ids or directly on the HTML element.

```
.background, #background, body{  
background: rgb(232, 202, 178) }
```

If only the background color should be changed can be used:

```
.background{ background-color: rgb(232,  
202, 178) }
```

This example shows the color as background, it is applied via the CSS property "background".

To optimize and compress your CSS code, you can use our [online CSS compressor and optimizer](#) based on csstidy. If you want to create a linear or radial gradient as background or border, check our [CSS Gradient Generator](#).

Hey! You found this booklet interesting? Support Converting Colors with the new Membership Option!

The pro membership hides all ads, plus gives you double the colors in the color bucket, and more awesome pro features!

[Learn more, Memberships starting at \\$2.50/m!](#)

**Follow me
on Twitter!**

@ConvertingColor