

Converting Colors

YUV(208.3680, -8.0694,
21.6023)

Have a look what the booklet for
YUV(208.3680, -8.0694, 21.6023)
contains.

YUV(208.3680, -8.0694, 21.6023)	3
<i>Conversions</i>	4
<i>Details</i>	6
<i>Harmonies</i>	12
<i>Previews</i>	24
<i>Color Blindness Simulation</i>	28
<i>CSS Examples</i>	31

Color

**YUV(208.3680, -8.0694,
21.6023)**

Conversions

Conversions Part 1

Format	Color
Hex	E9C7C0
RGB	233, 199, 192
RGB Percent	91%, 78%, 75%
CMY	0.0863, 0.2196, 0.2471
CMYK	0.00, 0.15, 0.18, 0.09
HSL	10°, 48%, 83%
HSV	10°, 18%, 91%
XYZ	63.5421, 61.9763, 58.4828
YIQ	208.3680, 22.5110, 5.0310

Conversions

Conversions Part 2

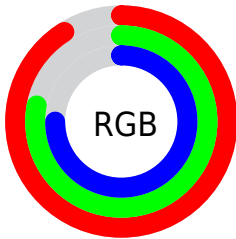
Format	Color
R _Y B	233, 200, 192
Decimal	15321024
CIE Lab	82.90, 10.90, 7.94
CIE LCh	83, 13.489, 36.082
Yxy	61.9763, 0.3453, 0.3368
Android (android.graphics.Color)	4293511104 (0xFFE9C7C0)
YUV	208.3680, -8.0694, 21.6023
Hunter-Lab	78.7250, 6.3058, 11.0625

Details

The YUV color $208.3680, -8.0694, 21.6023$ is a light color, and the websafe version is hex FFCCCC . A complement of this color would be $216.6320, 8.0694, -21.6023$, and the grayscale version is $208.0000, 0.0000, 0.0000$.

A 20% lighter version of the original color is $254.2020, -3.0576, 0.6998$, and $153.8840, -7.3378, 20.2727$ is the 20% darker color. If you saturate the color by 10%, you get $194.5930, -12.6173, 33.6829$, and if you desaturate by 10%, it is $222.1430, -3.5215, 9.5216$.

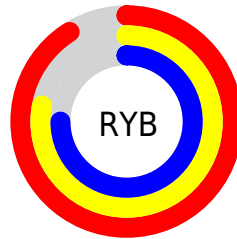
Distribution



Red (91%)

Green (78%)

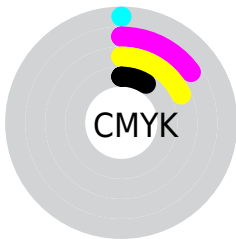
Blue (75%)



Red (91%)

Yellow (78%)

Blue (75%)

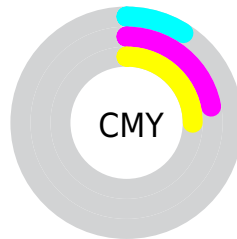


Cyan (0%)

Magenta (15%)

Yellow (18%)

Black (9%)



Cyan (9%)


Magenta (22%)

Yellow (25%)

Brightness & Saturation Gradients

These gradients show how the YUV color 208.3680, -8.0694, 21.6023 changes by changing the brightness by 10 percent. The first figure shows a shift by +10% for each color and the second figure -10%.


Similar to the brightness gradients but the following saturation gradients show a change of the YUV color 208.3680, -8.0694, 21.6023 by changing the saturation by 10% instead.


 208.3680, -8.0694,
21.6023


 208.3680, -8.0694,
21.6023

255.0000, 0.0000,
0.0000


 181.0690, -7.9220,
20.9875


 254.2020, -3.0576,
0.6998

 153.8840, -7.3378,
20.2727

 127.5850, -7.1904,
19.6580

 102.9870, -6.8956,
18.4284

 78.3890, -6.6008,
17.1988

 55.2040, -6.0166,
16.4841

 33.7200, -5.2850,

15.1546

■ 10.4430, -5.1484,
18.0285

■ 0.0000, 0.0000,
0.0000

■ 208.3680, -8.0694,
21.6023

■ 208.3680, -8.0694,
21.6023

■ 194.5930,
-12.6173, 33.6829

■ 222.1430, -3.5215,
9.5216

■ 180.1170,
-17.3127, 46.3784

■ 236.6190, 1.1738,
-3.1739

■ 166.3420,
-21.8606, 58.4591

■ 248.4220, 3.2430,
-13.5251

■ 152.5670,
-26.4085, 70.5397

■ 138.2050,
-30.6671, 83.1352

■ 124.3160,
-35.6518, 95.3159

■ 110.5410,
-40.1997, 107.3965

■ 96.1790, -44.4582,
119.9920

■ 93.1470, -45.9215,
122.6511

Harmonies

Analogous

The Analogous color harmony consists of three colors that are next to each other on the color wheel.



209.1490, -2.5385, 20.9173



208.3680, -8.0694, 21.6023



207.1240, -11.4001, 16.5543

Triad

The Triadic color harmony groups three colors that are evenly spaced from another and form a triangle on the color wheel.



208.3680, -8.0694, 21.6023



202.9890, -3.4456, -14.8994



206.4470, 12.1046, -9.1620

Complementary

The Complementary color scheme is a pair of colors which are on the opposite of each other on the color wheel.



208.3680, -8.0694, 21.6023



216.6320, 8.0694, -21.6023

Split Complementary

Split-complementary colors differ from the complementary color scheme. The scheme consists of three colors, the original color and two neighbors of the complement color.



204.3810, 12.1372, -19.6281



208.3680, -8.0694, 21.6023



202.0680, 3.4175, -22.8616

Square

The Square scheme is like the rectangle color scheme, but the four colors are evenly spaced on the color wheel.



208.3680, -8.0694, 21.6023



204.2740, -9.0091, -3.7483



202.5500, 9.0958, -24.1614



207.8400, 9.4459, 3.6483

Rectangle

The Rectangle color scheme consists of four colors that form a rectangle on the color wheel.



208.3680, -8.0694, 21.6023



206.4500, -12.5468, 11.0064



202.5500, 9.0958, -24.1614



205.5390, 12.5523, -12.7507

Sweetspot

The Sweet Spot groups the original color and five complimentary colors.



208.3680, -8.0694, 21.6023



247.0610, -2.4951, 6.9625



208.1350, 8.8074, 21.8066



122.9790, -1.4686, 4.4034



0.0000, 0.0000, 0.0000



128.0000, 0.0000, 0.0000

Same Dimension

The Same Dimension uses a secret algorithm to generate beautiful new colors.



208.3680, -8.0694, 21.6023



223.0160, -10.8539, 28.0500



220.1080, -13.8572, 11.3063



110.4630, -2.2003, 5.7329



72.3160, -35.6518, 95.3159



21.4290, -10.5645, 28.5648

Inverse Universe

The Inverse Universe completely reimagines the original color for something new.



216.6320, 8.0694, -21.6023



233.5710, 10.5645, -28.5648



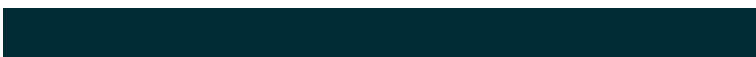
204.8920, 13.8572, -11.3063



112.5370, 2.2003, -5.7329



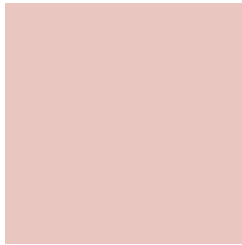
108.6840, 35.6518, -95.3159



31.9840, 10.8539, -28.0500

Previews

White Background



This preview shows how the YUV color 208.3680, -8.0694, 21.6023 looks on a white background.

Color Contrast Check

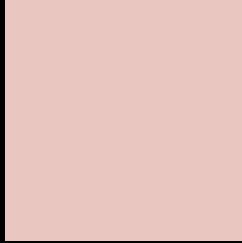
Large Text (above 18pt) WCAG AA × Fail

Any Text WCAG AA × Fail

Large Text (above 18pt) WCAG AAA × Fail

Any Text WCAG AAA × Fail

Black Background



This preview shows how the YUV color 208.3680, -8.0694, 21.6023 looks on a black background.

Color Contrast Check

Large Text (above 18pt) WCAG AA ✓ Pass

Any Text WCAG AA ✓ Pass

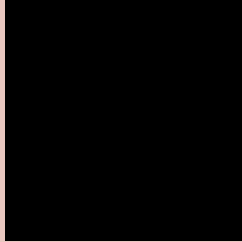
Large Text (above 18pt) WCAG AAA ✓ Pass

Any Text WCAG AAA ✓ Pass

If you want to check with other color combinations, try the [Color Contrast Checker](#).

YUV 208.3680, -8.0694, 21.6023

Background



This preview shows how black text looks on a background with the YUV color 208.3680, -8.0694, 21.6023.



This preview shows how white text looks on a background with the YUV color 208.3680, -8.0694,

Color Blindness Simulation

Color vision deficiency is a very complex topic, and I could not describe the different causes any better than Wikipedia does, so if you want to learn more, you should check out their [article about color blindness](#).

Dichromacy



Original Color

208.3680, -8.0694, 21.6023

Protanopia

206.9530, -5.3998, 5.3032

Deuteranopia

208.0690, -7.9220, 20.9875



Tritanopia

209.3710, 0.8031, 22.4766

Trichromacy



Original Color

208.3680, -8.0694, 21.6023

Protanomaly

207.1710, -6.0003, 11.2510

Deuteranomaly

208.0690, -7.9220, 20.9875

Tritanomaly

208.8610, -2.3965, 22.0469

Monochromacy



Original Color

208.3680, -8.0694, 21.6023

Achromatopsia

208.0000, 0.0000, 0.0000

Achromatomaly

208.2460, -3.0793, 7.6773

CSS Examples

Text

The CSS property to change the color of the text to YUV 208.3680, -8.0694, 21.6023 is called "color". The color property can be set on classes, ids or directly on the HTML element.

This example shows how text in the color `rgb(233, 199, 192)` looks like.

```
.text, #text, p{  
    color:rgb(233, 199, 192)  
}
```

If you want to add a text shadow in that color use the text-shadow property, you can generate a text shadow directly with our [CSS Text Shadow Generator](#).

Here you see how black text with a 4 pixel rgb(233, 199, 192) colored shadow looks like.

```
.shadow{ text-shadow: 4px 4px 2px rgb(233, 199, 192) }
```

Border

The CSS property to change the border of an element to YUV 208.3680, -8.0694, 21.6023 is called "border". The border property can be set on classes, ids or directly on the HTML element.

This example shows the color as border, it can be applied via the CSS property "border" or "border-color".

```
.border, #border, table{ border:4px solid rgb(233, 199, 192) }
```


If only the border color should be changed use the property `border-color`.

```
.border{ border-color:rgb(233, 199, 192) }
```

If you want to add a box shadow in that color use:

Here you see how a box with a 4 pixel `rgb(233, 199, 192)` colored shadow looks like.

```
.boxshadow{ -moz-box-shadow:4px 4px 4px 4px rgb(233, 199, 192); -webkit-box-shadow:4px 4px 4px 4px rgb(233, 199, 192); box-shadow:4px 4px 4px 4px rgb(233, 199, 192) }
```

Background

The CSS property to change the background color of an element to YUV 208.3680, -8.0694, 21.6023 is called "background". The background property can be set on classes, ids or directly on the HTML element.

```
.background, #background, body{  
background: rgb(233, 199, 192) }
```

If only the background color should be changed can be used:

```
.background{ background-color: rgb(233,  
199, 192) }
```

This example shows the color as background, it is applied via the CSS property "background".

To optimize and compress your CSS code, you can use our [online CSS compressor and optimizer](#) based on csstidy. If you want to create a linear or radial gradient as background or border, check our [CSS Gradient Generator](#).

Hey! You found this booklet interesting? Support Converting Colors with the new Membership Option!

The pro membership hides all ads, plus gives you double the colors in the color bucket, and more awesome pro features!

[Learn more, Memberships starting at \\$2.50/m!](#)

**Follow me
on Twitter!**

@ConvertingColor