

Converting Colors

YUV(208.3780, -6.5954,
15.4545)

Have a look what the booklet for
YUV(208.3780, -6.5954, 15.4545)
contains.

YUV(208.3780, -6.5954, 15.4545)	3
<i>Conversions</i>	4
<i>Details</i>	6
<i>Harmonies</i>	12
<i>Previews</i>	24
<i>Color Blindness Simulation</i>	28
<i>CSS Examples</i>	31

Color

**YUV(208.3780, -6.5954,
15.4545)**

Conversions

Conversions Part 1

Format	Color
Hex	E2CAC3
RGB	226, 202, 195
RGB Percent	89%, 79%, 76%
CMY	0.1137, 0.2078, 0.2353
CMYK	0.00, 0.11, 0.14, 0.11
HSL	14°, 35%, 83%
HSV	14°, 14%, 89%
XYZ	62.3349, 62.3499, 60.3791
YIQ	208.3780, 16.5510, 2.9110

Conversions

Conversions Part 2

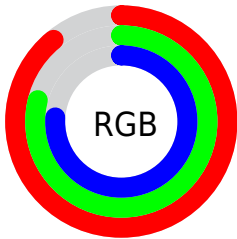
Format	Color
R _Y B	226, 204, 195
Decimal	14863043
CIE Lab	83.10, 7.26, 6.55
CIE LCh	83, 9.776, 42.048
Yxy	62.3499, 0.3368, 0.3369
Android (android.graphics.Color)	4293053123 (0xFFE2CAC3)
YUV	208.3780, -6.5954, 15.4545
Hunter-Lab	78.9620, 2.7296, 9.9367

Details

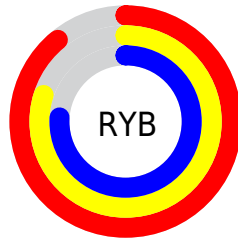
The YUV color $208.3780, -6.5954, 15.4545$ is a light color, and the websafe version is hex `CCCCCC`. A complement of this color would be $212.6220, 6.5954, -15.4545$, and the grayscale version is $208.0000, 0.0000, 0.0000$.

A 20% lighter version of the original color is $254.6580, -1.3104, 0.2999$, and $153.7800, -6.3005, 14.2249$ is the 20% darker color. If you saturate the color by 10%, you get $195.7770, -11.7221, 26.5056$, and if you desaturate by 10%, it is $220.9790, -1.4686, 4.4034$.

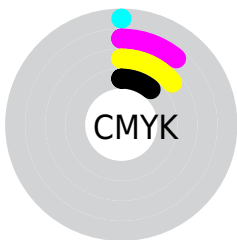
Distribution



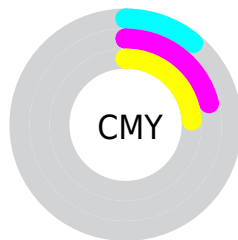
- Red (89%)
- Green (79%)
- Blue (76%)



- Red (89%)
- Yellow (80%)
- Blue (76%)



- Cyan (0%)
- Magenta (11%)
- Yellow (14%)
- Black (11%)



- Cyan (11%)
- Magenta (21%)
- Yellow (24%)

Brightness & Saturation Gradients

These gradients show how the YUV color 208.3780, -6.5954, 15.4545 changes by changing the brightness by 10 percent. The first figure shows a shift by +10% for each color and the second figure -10%.

Similar to the brightness gradients but the following saturation gradients show a change of the YUV color 208.3780, -6.5954, 15.4545 by changing the saturation by 10% instead.

■ 208.3780, -6.5954,
15.4545

■ 208.3780, -6.5954,
15.4545

255.0000, 0.0000,
0.0000

■ 181.0790, -6.4479,
14.8397

254.6580, -1.3104,
0.2999

■ 153.7800, -6.3005,
14.2249

■ 127.8940, -5.8637,
14.1250

■ 102.5950, -5.7163,
13.5102

■ 78.9970, -5.4215,
12.2806

■ 55.8120, -4.8373,
11.5659

■ 34.2140, -4.5425,

10.3363

■ 11.0080, -5.4269,
14.0250

■ 0.0000, 0.0000,
0.0000

■ 208.3780, -6.5954,
15.4545

■ 208.3780, -6.5954,
15.4545

■ 195.7770,
-11.7221, 26.5056

■ 220.9790, -1.4686,
4.4034

■ 182.7030,
-16.1226, 37.9715

■ 234.0530, 2.9319,
-7.0625

■ 170.1020,
-21.2493, 49.0225

■ 245.7420, 4.5642,
-17.3137

■ 157.0280,
-25.6498, 60.4884

■ 246.3290, 4.2748,
-17.8285

■ 144.4270,
-30.7765, 71.5395

■ 131.2390,
-35.6138, 83.1054

■ 118.7520,
-40.3037, 94.0565

■ 105.5640,
-45.1411, 105.6224

■ 97.5110, -48.0729,
112.6849

Harmonies

Analogous

The Analogous color harmony consists of three colors that are next to each other on the color wheel.



209.0020, -2.9590, 15.7842



208.3780, -6.5954, 15.4545



207.1880, -8.4737, 11.2361

Triad

The Triadic color harmony groups three colors that are evenly spaced from another and form a triangle on the color wheel.



208.3780, -6.5954, 15.4545



204.4670, -1.7092, -11.8106



206.9700, 8.8888, -4.3587

Complementary

The Complementary color scheme is a pair of colors which are on the opposite of each other on the color wheel.



208.3780, -6.5954, 15.4545



212.6220, 6.5954, -15.4545

Split Complementary

Split-complementary colors differ from the complementary color scheme. The scheme consists of three colors, the original color and two neighbors of the complement color.



205.6270, 9.0579, -11.9509



208.3780, -6.5954, 15.4545



204.2860, 2.8170, -16.9138

Square

The Square scheme is like the rectangle color scheme, but the four colors are evenly spaced on the color wheel.



208.3780, -6.5954, 15.4545



205.0720, -5.9515, -4.4481



204.7250, 7.0376, -17.2988



208.0420, 6.3883, 4.3482

Rectangle

The Rectangle color scheme consists of four colors that form a rectangle on the color wheel.



208.3780, -6.5954, 15.4545



206.4540, -8.6048, 6.6178



204.7250, 7.0376, -17.2988



206.3610, 9.1890, -7.3326

Sweetspot

The Sweet Spot groups the original color and five complimentary colors.



208.3780, -6.5954, 15.4545



249.1640, -2.0529, 5.1182



207.0050, 5.9135, 16.6586



124.2670, -1.6106, 3.2738



0.0000, 0.0000, 0.0000



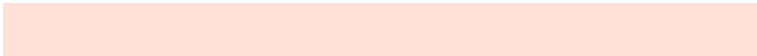
128.0000, 0.0000, 0.0000

Same Dimension

The Same Dimension uses a secret algorithm to generate beautiful new colors.



208.3780, -6.5954, 15.4545



231.5420, -8.6482, 20.5727



217.1830, -10.9362, 7.7325



106.0500, -2.4896, 5.2182



76.1040, -37.5193, 87.6088



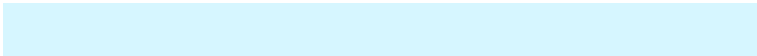
20.8090, -10.2588, 23.8465

Inverse Universe

The Inverse Universe completely reimagines the original color for something new.



212.6220, 6.5954, -15.4545



237.4580, 8.6482, -20.5727



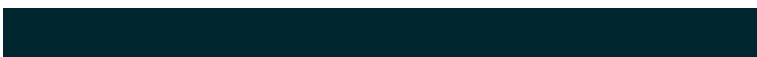
203.8170, 10.9362, -7.7325



107.5370, 2.2003, -5.7329



99.8960, 37.5193, -87.6088



27.7780, 9.9694, -24.3613

Previews

White Background



This preview shows how the YUV color 208.3780, -6.5954, 15.4545 looks on a white background.

Color Contrast Check

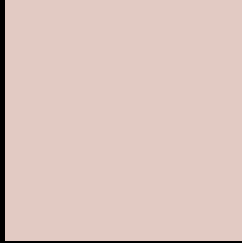
Large Text (above 18pt) WCAG AA × Fail

Any Text WCAG AA × Fail

Large Text (above 18pt) WCAG AAA × Fail

Any Text WCAG AAA × Fail

Black Background



This preview shows how the YUV color 208.3780, -6.5954, 15.4545 looks on a black background.

Color Contrast Check

Large Text (above 18pt) WCAG AA ✓ Pass

Any Text WCAG AA ✓ Pass

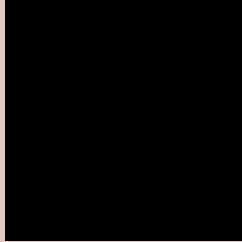
Large Text (above 18pt) WCAG AAA ✓ Pass

Any Text WCAG AAA ✓ Pass

If you want to check with other color combinations, try the [Color Contrast Checker](#).

YUV 208.3780, -6.5954, 15.4545

Background



This preview shows how black text looks on a background with the YUV color 208.3780, -6.5954, 15.4545.



This preview shows how white text looks on a background with the YUV color 208.3780, -6.5954,

15.4545.

Color Blindness Simulation

Color vision deficiency is a very complex topic, and I could not describe the different causes any better than Wikipedia does, so if you want to learn more, you should check out their [article about color blindness](#).

Dichromacy



Original Color

208.3780, -6.5954, 15.4545

Protanopia

207.0670, -4.9630, 5.2032

Deuteranopia

208.6990, -6.7536, 19.5580



Tritanopia

209.7940, 2.5666, 16.8437

Trichromacy



Original Color

208.3780, -6.5954, 15.4545

Protanomaly

207.8610, -5.8475, 8.8919

Deuteranomaly

208.6880, -6.7482, 17.8136

Tritanomaly

209.2840, -0.6330, 16.4139

Monochromacy



Original Color

208.3780, -6.5954, 15.4545

Achromatopsia

208.0000, 0.0000, 0.0000

Achromatomaly

208.3490, -2.6371, 5.8329

CSS Examples

Text

The CSS property to change the color of the text to YUV 208.3780, -6.5954, 15.4545 is called "color". The color property can be set on classes, ids or directly on the HTML element.

This example shows how text in the color `rgb(226, 202, 195)` looks like.

```
.text, #text, p{  
    color:rgb(226, 202, 195)  
}
```

If you want to add a text shadow in that color use the text-shadow property, you can generate a text shadow directly with our [CSS Text Shadow Generator](#).

Here you see how black text with a 4 pixel rgb(226, 202, 195) colored shadow looks like.

```
.shadow{ text-shadow: 4px 4px 2px rgb(226, 202, 195) }
```

Border

The CSS property to change the border of an element to YUV 208.3780, -6.5954, 15.4545 is called "border". The border property can be set on classes, ids or directly on the HTML element.

This example shows the color as border, it can be applied via the CSS property "border" or "border-color".

```
.border, #border, table{ border:4px solid rgb(226, 202, 195) }
```


If only the border color should be changed use the property `border-color`.

```
.border{ border-color:rgb(226, 202, 195) }
```

If you want to add a box shadow in that color use:

Here you see how a box with a 4 pixel `rgb(226, 202, 195)` colored shadow looks like.

```
.boxshadow{ -moz-box-shadow:4px 4px 4px 4px rgb(226, 202, 195); -webkit-box-shadow:4px 4px 4px 4px rgb(226, 202, 195); box-shadow:4px 4px 4px 4px rgb(226, 202, 195) }
```

Background

The CSS property to change the background color of an element to YUV 208.3780, -6.5954, 15.4545 is called "background". The background property can be set on classes, ids or directly on the HTML element.

```
.background, #background, body{  
background: rgb(226, 202, 195) }
```

If only the background color should be changed can be used:

```
.background{ background-color: rgb(226,  
202, 195) }
```

This example shows the color as background, it is applied via the CSS property "background".

To optimize and compress your CSS code, you can use our [online CSS compressor and optimizer](#) based on csstidy. If you want to create a linear or radial gradient as background or border, check our [CSS Gradient Generator](#).

Hey! You found this booklet interesting? Support Converting Colors with the new Membership Option!

The pro membership hides all ads, plus gives you double the colors in the color bucket, and more awesome pro features!

[Learn more, Memberships starting at \\$2.50/m!](#)

**Follow me
on Twitter!**

@ConvertingColor