

Converting Colors

YUV(208.6320, -1.7906,
14.3547)

Have a look what the booklet for
YUV(208.6320, -1.7906, 14.3547)
contains.

YUV(208.6320, -1.7906, 14.3547)	3
<i>Conversions</i>	4
<i>Details</i>	6
<i>Harmonies</i>	12
<i>Previews</i>	24
<i>Color Blindness Simulation</i>	28
<i>CSS Examples</i>	31

Color

**YUV(208.6320, -1.7906,
14.3547)**

Conversions

Conversions Part 1

Format	Color
Hex	E1C9CD
RGB	225, 201, 205
RGB Percent	88%, 79%, 80%
CMY	0.1176, 0.2118, 0.1961
CMYK	0.00, 0.11, 0.09, 0.12
HSL	350°, 29%, 84%
HSV	350°, 11%, 88%
XYZ	62.9574, 62.1886, 66.4430
YIQ	208.6320, 13.0200, 6.3320

Conversions

Conversions Part 2

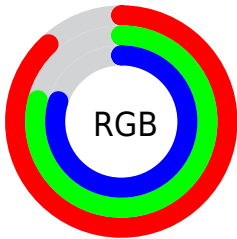
Format	Color
R _Y B	225, 201, 205
Decimal	14797261
CIE Lab	83.01, 9.07, 1.07
CIE LCh	83, 9.133, 6.753
Yxy	62.1886, 0.3286, 0.3246
Android (android.graphics.Color)	4292987341 (0xFFE1C9CD)
YUV	208.6320, -1.7906, 14.3547
Hunter-Lab	78.8598, 4.5003, 5.2473

Details

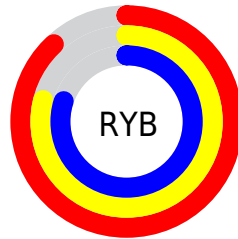
The YUV color $208.6320, -1.7906, 14.3547$ is a light color, and the websafe version is hex `CCCCCC`. A complement of this color would be $217.3680, 1.7906, -14.3547$, and the grayscale version is $209.0000, 0.0000, 0.0000$.

A 20% lighter version of the original color is $255.0000, 0.0000, 0.0000$, and $154.3330, -1.6432, 13.7400$ is the 20% darker color. If you saturate the color by 10%, you get $193.5520, -3.7231, 27.5799$, and if you desaturate by 10%, it is $223.7120, 0.1420, 1.1296$.

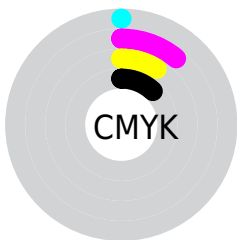
Distribution



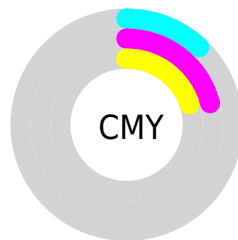
- Red (88%)
- Green (79%)
- Blue (80%)



- Red (88%)
- Yellow (79%)
- Blue (80%)



- Cyan (0%)
- Magenta (11%)
- Yellow (9%)
- Black (12%)



- Cyan (12%)
- Magenta (21%)
- Yellow (20%)

Brightness & Saturation Gradients

These gradients show how the YUV color 208.6320, -1.7906, 14.3547 changes by changing the brightness by 10 percent. The first figure shows a shift by +10% for each color and the second figure -10%.

Similar to the brightness gradients but the following saturation gradients show a change of the YUV color 208.6320, -1.7906, 14.3547 by changing the saturation by 10% instead.

■ 208.6320, -1.7906,
14.3547

■ 208.6320, -1.7906,
14.3547

255.0000, 0.0000,
0.0000

■ 181.3330, -1.6432,
13.7400

■ 154.3330, -1.6432,
13.7400

■ 128.0340, -1.4958,
13.1252

■ 102.7350, -1.3484,
12.5104

■ 79.0230, -1.4903,
11.3808

■ 56.1370, -1.0535,
11.2809

■ 34.4250, -1.1955,

10.1513

■ 11.4470, -1.2064,
13.6400

■ 0.0000, 0.0000,
0.0000

■ 208.6320, -1.7906,
14.3547

■ 208.6320, -1.7906,
14.3547

■ 193.5520, -3.7231,
27.5799

■ 223.7120, 0.1420,
1.1296

■ 177.9990, -4.9295,
41.2199

■ 239.3790, 1.7852,
-12.6104

■ 162.3320, -6.5727,
54.9598

■ 246.0300, 4.4222,
-18.4433

■ 147.2520, -8.5052,
68.1850

■ 132.1720,
-10.4378, 81.4102

■ 116.6190,
-11.6442, 95.0501

■ 100.9520,
-13.2873, 108.7901

■ 85.8720, -15.2199,
122.0153

■ 71.6070, -16.5683,
134.5257

Harmonies

Analogous

The Analogous color harmony consists of three colors that are next to each other on the color wheel.



208.7500, 2.5882, 9.8663



208.6320, -1.7906, 14.3547



208.3070, -5.5744, 14.6398

Triad

The Triadic color harmony groups three colors that are evenly spaced from another and form a triangle on the color wheel.



208.6320, -1.7906, 14.3547



205.0830, -5.9569, -2.7038



205.1000, 8.3317, -12.3657

Complementary

The Complementary color scheme is a pair of colors which are on the opposite of each other on the color wheel.



208.6320, -1.7906, 14.3547



217.3680, 1.7906, -14.3547

Split Complementary

Split-complementary colors differ from the complementary color scheme. The scheme consists of three colors, the original color and two neighbors of the complement color.



204.2090, 6.3060, -15.9693



208.6320, -1.7906, 14.3547



204.3640, -2.1515, -9.9662

Square

The Square scheme is like the rectangle color scheme, but the four colors are evenly spaced on the color wheel.



208.6320, -1.7906, 14.3547



206.5570, -8.1626, 4.7735



204.0690, 1.9380, -14.9695



206.8450, 8.4574, -6.0031

Rectangle

The Rectangle color scheme consists of four colors that form a rectangle on the color wheel.



208.6320, -1.7906, 14.3547



207.5410, -7.1687, 12.6805



204.0690, 1.9380, -14.9695



204.9750, 7.9003, -14.0101

Sweetspot

The Sweet Spot groups the original color and five complimentary colors.



208.6320, -1.7906, 14.3547



249.6200, -0.3057, 4.7183



209.7160, 7.5350, 9.8961



123.9080, -0.4476, 3.5887



0.0000, 0.0000, 0.0000



128.0000, 0.0000, 0.0000

Same Dimension

The Same Dimension uses a secret algorithm to generate beautiful new colors.



208.6320, -1.7906, 14.3547



232.4370, -2.6804, 19.7878



212.8720, -5.8529, 10.6363



104.5170, -0.7479, 6.5626



55.9300, -13.2765, 105.3014



15.2640, -3.5812, 28.7095

Inverse Universe

The Inverse Universe completely reimagines the original color for something new.



208.6320, -1.7906, 14.3547



232.4370, -2.6804, 19.7878



213.1280, 5.8529, -10.6363



104.5170, -0.7479, 6.5626



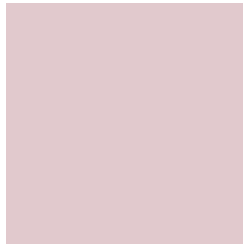
55.9300, -13.2765, 105.3014



15.2640, -3.5812, 28.7095

Previews

White Background



This preview shows how the YUV color 208.6320, -1.7906, 14.3547 looks on a white background.

Color Contrast Check

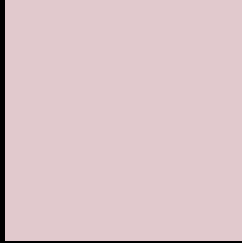
Large Text (above 18pt) WCAG AA × Fail

Any Text WCAG AA × Fail

Large Text (above 18pt) WCAG AAA × Fail

Any Text WCAG AAA × Fail

Black Background



This preview shows how the YUV color 208.6320, -1.7906, 14.3547 looks on a black background.

Color Contrast Check

Large Text (above 18pt) WCAG AA ✓ Pass

Any Text WCAG AA ✓ Pass

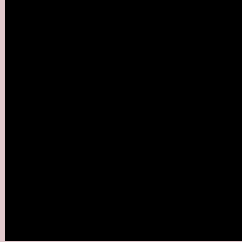
Large Text (above 18pt) WCAG AAA ✓ Pass

Any Text WCAG AAA ✓ Pass

If you want to check with other color combinations, try the [Color Contrast Checker](#).

YUV 208.6320, -1.7906, 14.3547

Background



This preview shows how black text looks on a background with the YUV color 208.6320, -1.7906, 14.3547.

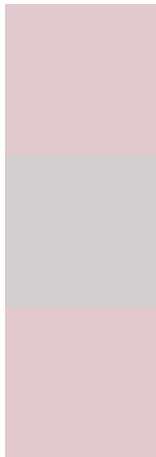


This preview shows how white text looks on a background with the YUV color 208.6320, -1.7906,

Color Blindness Simulation

Color vision deficiency is a very complex topic, and I could not describe the different causes any better than Wikipedia does, so if you want to learn more, you should check out their [article about color blindness](#).

Dichromacy



Original Color

208.6320, -1.7906, 14.3547

Protanopia

207.4240, 0.2840, 2.2592

Deuteranopia

208.6430, -1.7960, 16.0991



Tritanopia

208.8970, 3.0088, 14.9993

Trichromacy



Original Color

208.6320, -1.7906, 14.3547

Protanomaly

207.6310, -0.3111, 6.4626

Deuteranomaly

208.3440, -1.6486, 15.4843

Tritanomaly

209.0280, 0.9722, 14.8844

Monochromacy



Original Color

208.6320, -1.7906, 14.3547

Achromatopsia

209.0000, 0.0000, 0.0000

Achromatomaly

208.9190, -0.4531, 5.3330

CSS Examples

Text

The CSS property to change the color of the text to YUV 208.6320, -1.7906, 14.3547 is called "color". The color property can be set on classes, ids or directly on the HTML element.

This example shows how text in the color `rgb(225, 201, 205)` looks like.

```
.text, #text, p{  
    color:rgb(225, 201, 205)  
}
```

If you want to add a text shadow in that color use the text-shadow property, you can generate a text shadow directly with our [CSS Text Shadow Generator](#).

Here you see how black text with a 4 pixel rgb(225, 201, 205) colored shadow looks like.

```
.shadow{ text-shadow: 4px 4px 2px rgb(225, 201, 205) }
```

Border

The CSS property to change the border of an element to YUV 208.6320, -1.7906, 14.3547 is called "border". The border property can be set on classes, ids or directly on the HTML element.

This example shows the color as border, it can be applied via the CSS property "border" or "border-color".

```
.border, #border, table{ border:4px solid rgb(225, 201, 205) }
```


If only the border color should be changed use the property `border-color`.

```
.border{ border-color:rgb(225, 201, 205) }
```

If you want to add a box shadow in that color use:

Here you see how a box with a 4 pixel `rgb(225, 201, 205)` colored shadow looks like.

```
.boxshadow{ -moz-box-shadow:4px 4px 4px  
4px rgb(225, 201, 205); -webkit-box-  
shadow:4px 4px 4px 4px rgb(225, 201, 205);  
box-shadow:4px 4px 4px 4px rgb(225, 201,  
205) }
```

Background

The CSS property to change the background color of an element to YUV 208.6320, -1.7906, 14.3547 is called "background". The background property can be set on classes, ids or directly on the HTML element.

```
.background, #background, body{  
background: rgb(225, 201, 205) }
```

If only the background color should be changed can be used:

```
.background{ background-color: rgb(225,  
201, 205) }
```

This example shows the color as background, it is applied via the CSS property "background".

To optimize and compress your CSS code, you can use our [online CSS compressor and optimizer](#) based on csstidy. If you want to create a linear or radial gradient as background or border, check our [CSS Gradient Generator](#).

Hey! You found this booklet interesting? Support Converting Colors with the new Membership Option!

The pro membership hides all ads, plus gives you double the colors in the color bucket, and more awesome pro features!

[Learn more, Memberships starting at \\$2.50/m!](#)

**Follow me
on Twitter!**

@ConvertingColor