

Converting Colors

YUV(209.1220, -4.9901,
13.9250)

Have a look what the booklet for
YUV(209.1220, -4.9901, 13.9250)
contains.

YUV(209.1220, -4.9901, 13.9250)	3
<i>Conversions</i>	4
<i>Details</i>	6
<i>Harmonies</i>	12
<i>Previews</i>	24
<i>Color Blindness Simulation</i>	28
<i>CSS Examples</i>	31

Color

**YUV(209.1220, -4.9901,
13.9250)**

Conversions

Conversions Part 1

Format	Color
Hex	E1CBC7
RGB	225, 203, 199
RGB Percent	88%, 80%, 78%
CMY	0.1176, 0.2039, 0.2196
CMYK	0.00, 0.10, 0.12, 0.12
HSL	9°, 30%, 83%
HSV	9°, 12%, 88%
XYZ	62.7161, 62.8429, 62.8572
YIQ	209.1220, 14.3960, 3.4200

Conversions

Conversions Part 2

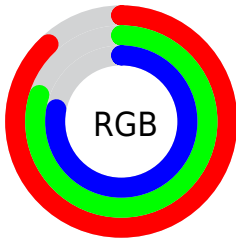
Format	Color
R _Y B	225, 204, 199
Decimal	14797767
CIE Lab	83.36, 7.02, 4.78
CIE LCh	83, 8.492, 34.243
Yxy	62.8429, 0.3329, 0.3335
Android (android.graphics.Color)	4292987847 (0xFFE1CBC7)
YUV	209.1220, -4.9901, 13.9250
Hunter-Lab	79.2735, 2.4889, 8.4795

Details

The YUV color $209.1220, -4.9901, 13.9250$ is a light color, and the websafe version is hex `CCCCCC`. A complement of this color would be $214.8780, 4.9901, -13.9250$, and the grayscale version is $209.0000, 0.0000, 0.0000$.

A 20% lighter version of the original color is $255.0000, 0.0000, 0.0000$, and $154.8230, -4.8427, 13.3102$ is the 20% darker color. If you saturate the color by 10%, you get $195.4610, -9.1013, 25.9057$, and if you desaturate by 10%, it is $222.8970, -0.4422, 1.8443$.

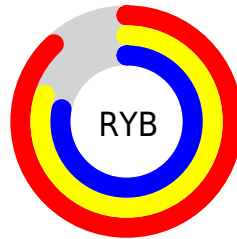
Distribution



Red (88%)

Green (80%)

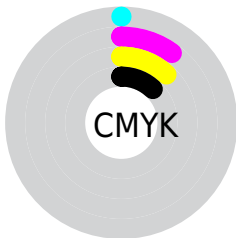
Blue (78%)



Red (88%)

Yellow (80%)

Blue (78%)

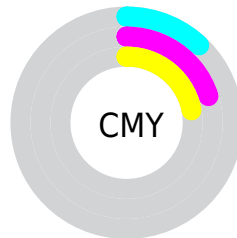


Cyan (0%)

Magenta (10%)

Yellow (12%)

Black (12%)



Cyan (12%)

Magenta (20%)

Yellow (22%)

Brightness & Saturation Gradients

These gradients show how the YUV color 209.1220, -4.9901, 13.9250 changes by changing the brightness by 10 percent. The first figure shows a shift by +10% for each color and the second figure -10%.

Similar to the brightness gradients but the following saturation gradients show a change of the YUV color 209.1220, -4.9901, 13.9250 by changing the saturation by 10% instead.

■ 209.1220, -4.9901,
13.9250

■ 209.1220, -4.9901,
13.9250

255.0000, 0.0000,
0.0000

■ 181.8230, -4.8427,
13.3102

■ 154.8230, -4.8427,
13.3102

■ 128.6380, -4.2585,
12.5955

■ 103.3390, -4.1111,
11.9807

■ 79.0400, -3.9637,
11.3659

■ 56.7410, -3.8163,
10.7511

■ 35.1430, -3.5215,

9.5216

■ 11.7090, -5.2795,
13.4102

■ 0.0000, 0.0000,
0.0000

■ 209.1220, -4.9901,
13.9250

■ 209.1220, -4.9901,
13.9250

■ 195.4610, -9.1013,
25.9057

■ 222.8970, -0.4422,
1.8443

■ 181.6860,
-13.6492, 37.9864

■ 236.5580, 3.6689,
-10.1364

■ 168.0250,
-17.7603, 49.9671

■ 246.0300, 4.4222,
-18.4433

■ 154.2500,
-22.3082, 62.0478

■ 140.5890,
-26.4194, 74.0284

■ 126.8140,
-30.9673, 86.1091

■ 113.0390,
-35.5152, 98.1898

■ 99.3780, -39.6264,
110.1705

■ 87.8200, -43.2953,
120.3069

Harmonies

Analogous

The Analogous color harmony consists of three colors that are next to each other on the color wheel.



209.4470, -1.2064, 13.6400



209.1220, -4.9901, 13.9250



208.5300, -7.1633, 10.9362

Triad

The Triadic color harmony groups three colors that are evenly spaced from another and form a triangle on the color wheel.



209.1220, -4.9901, 13.9250



205.6630, -2.2989, -9.3515



207.6170, 7.5838, -5.8031

Complementary

The Complementary color scheme is a pair of colors which are on the opposite of each other on the color wheel.



209.1220, -4.9901, 13.9250



214.8780, 4.9901, -13.9250

Split Complementary

Split-complementary colors differ from the complementary color scheme. The scheme consists of three colors, the original color and two neighbors of the complement color.



206.2850, 7.7475, -11.6509



209.1220, -4.9901, 13.9250



205.6670, 1.6432, -13.7400

Square

The Square scheme is like the rectangle color scheme, but the four colors are evenly spaced on the color wheel.



209.1220, -4.9901, 13.9250



206.3820, -6.1043, -2.0890



205.2800, 5.2850, -15.1546



208.6180, 6.1043, 2.0890

Rectangle

The Rectangle color scheme consists of four colors that form a rectangle on the color wheel.



209.1220, -4.9901, 13.9250



207.9810, -7.8786, 7.0327



205.2800, 5.2850, -15.1546



207.3070, 7.7366, -8.1622

Sweetspot

The Sweet Spot groups the original color and five complimentary colors.



209.1220, -4.9901, 13.9250



250.5660, -1.7580, 3.8886



209.2820, 5.7770, 13.7847



124.3810, -1.1738, 3.1739



0.0000, 0.0000, 0.0000



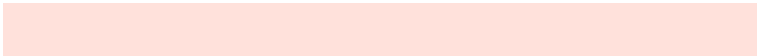
128.0000, 0.0000, 0.0000

Same Dimension

The Same Dimension uses a secret algorithm to generate beautiful new colors.



209.1220, -4.9901, 13.9250



233.2860, -7.0430, 19.0432



216.7530, -8.7522, 7.2326



105.4630, -2.2003, 5.7329



68.4730, -33.7572, 94.3012



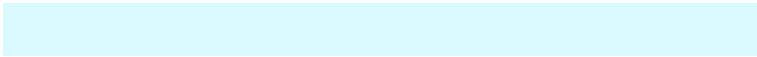
18.4610, -9.1013, 25.9057

Inverse Universe

The Inverse Universe completely reimagines the original color for something new.



214.8780, 4.9901, -13.9250



241.3010, 6.7536, -19.5580



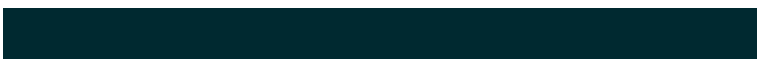
207.2470, 8.7522, -7.2326



107.5370, 2.2003, -5.7329



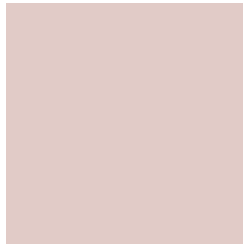
107.5270, 33.7572, -94.3012



29.5390, 9.1013, -25.9057

Previews

White Background



This preview shows how the YUV color 209.1220, -4.9901, 13.9250 looks on a white background.

Color Contrast Check

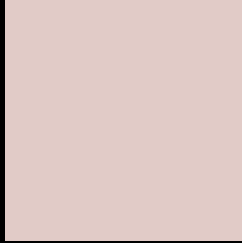
Large Text (above 18pt) WCAG AA × Fail

Any Text WCAG AA × Fail

Large Text (above 18pt) WCAG AAA × Fail

Any Text WCAG AAA × Fail

Black Background



This preview shows how the YUV color 209.1220, -4.9901, 13.9250 looks on a black background.

Color Contrast Check

Large Text (above 18pt) WCAG AA ✓ Pass

Any Text WCAG AA ✓ Pass

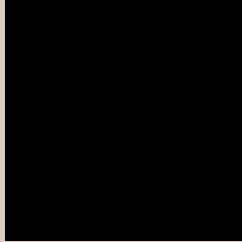
Large Text (above 18pt) WCAG AAA ✓ Pass

Any Text WCAG AAA ✓ Pass

If you want to check with other color combinations, try the [Color Contrast Checker](#).

YUV 209.1220, -4.9901, 13.9250

Background



This preview shows how black text looks on a background with the YUV color 209.1220, -4.9901, 13.9250.



This preview shows how white text looks on a background with the YUV color 209.1220, -4.9901,

13.9250.

Color Blindness Simulation

Color vision deficiency is a very complex topic, and I could not describe the different causes any better than Wikipedia does, so if you want to learn more, you should check out their [article about color blindness](#).

Dichromacy



Original Color

209.1220, -4.9901, 13.9250

Protanopia

208.1100, -3.5052, 4.2885

Deuteranopia

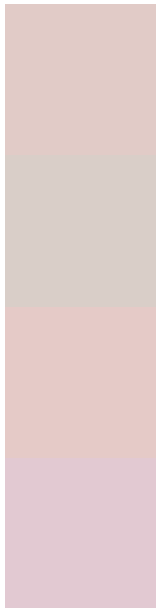
209.7420, -5.2958, 18.6433



Tritanopia

209.8970, 3.0088, 14.9993

Trichromacy



Original Color

209.1220, -4.9901, 13.9250

Protanomaly

208.6050, -4.2423, 7.3624

Deuteranomaly

209.7310, -5.2904, 16.8989

Tritanomaly

209.5010, 0.2460, 14.4696

Monochromacy



Original Color

209.1220, -4.9901, 13.9250

Achromatopsia

209.0000, 0.0000, 0.0000

Achromatomaly

209.1640, -2.0529, 5.1182

CSS Examples

Text

The CSS property to change the color of the text to YUV 209.1220, -4.9901, 13.9250 is called "color". The color property can be set on classes, ids or directly on the HTML element.

This example shows how text in the color `rgb(225, 203, 199)` looks like.

```
.text, #text, p{  
    color:rgb(225, 203, 199)  
}
```

If you want to add a text shadow in that color use the text-shadow property, you can generate a text shadow directly with our [CSS Text Shadow Generator](#).

Here you see how black text with a 4 pixel rgb(225, 203, 199) colored shadow looks like.

```
.shadow{ text-shadow: 4px 4px 2px rgb(225, 203, 199) }
```

Border

The CSS property to change the border of an element to YUV 209.1220, -4.9901, 13.9250 is called "border". The border property can be set on classes, ids or directly on the HTML element.

This example shows the color as border, it can be applied via the CSS property "border" or "border-color".

```
.border, #border, table{ border:4px solid rgb(225, 203, 199) }
```


If only the border color should be changed use the property `border-color`.

```
.border{ border-color:rgb(225, 203, 199) }
```

If you want to add a box shadow in that color use:

Here you see how a box with a 4 pixel `rgb(225, 203, 199)` colored shadow looks like.

```
.boxshadow{ -moz-box-shadow:4px 4px 4px 4px rgb(225, 203, 199); -webkit-box-shadow:4px 4px 4px 4px rgb(225, 203, 199); box-shadow:4px 4px 4px 4px rgb(225, 203, 199) }
```

Background

The CSS property to change the background color of an element to YUV 209.1220, -4.9901, 13.9250 is called "background". The background property can be set on classes, ids or directly on the HTML element.

```
.background, #background, body{  
background: rgb(225, 203, 199) }
```

If only the background color should be changed can be used:

```
.background{ background-color: rgb(225,  
203, 199) }
```

This example shows the color as background, it is applied via the CSS property "background".

To optimize and compress your CSS code, you can use our [online CSS compressor and optimizer](#) based on csstidy. If you want to create a linear or radial gradient as background or border, check our [CSS Gradient Generator](#).

Hey! You found this booklet interesting? Support Converting Colors with the new Membership Option!

The pro membership hides all ads, plus gives you double the colors in the color bucket, and more awesome pro features!

[Learn more, Memberships starting at \\$2.50/m!](#)

**Follow me
on Twitter!**

@ConvertingColor