

Converting Colors

YUV(209.1910, -16.3632,
21.7575)

Have a look what the booklet for
YUV(209.1910, -16.3632, 21.7575)
contains.

YUV(209.1910, -16.3632, 21.7575)	3
<i>Conversions</i>	4
<i>Details</i>	6
<i>Harmonies</i>	12
<i>Previews</i>	24
<i>Color Blindness Simulation</i>	28
<i>CSS Examples</i>	31

Color

**YUV(209.1910, -16.3632,
21.7575)**

Conversions

Conversions Part 1

Format	Color
Hex	EACBB0
RGB	234, 203, 176
RGB Percent	92%, 80%, 69%
CMY	0.0824, 0.2039, 0.3098
CMYK	0.00, 0.13, 0.25, 0.08
HSL	28°, 58%, 80%
HSV	28°, 25%, 92%
XYZ	63.1241, 63.3389, 49.9729
YIQ	209.1910, 27.1430, -1.8250

Conversions

Conversions Part 2

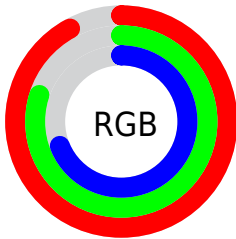
Format	Color
RYB	234, 227, 176
Decimal	15387568
CIELab	83.62, 6.84, 17.49
CIElCh	84, 18.776, 68.641
Yxy	63.3389, 0.3578, 0.3590
Android (android.graphics.Color)	4293577648 (0xFFEACBB0)
YUV	209.1910, -16.3632, 21.7575
Hunter-Lab	79.5857, 2.3037, 18.4810

Details

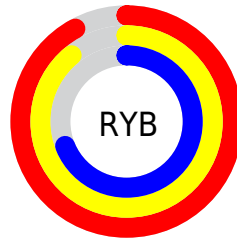
The YUV color $209.1910, -16.3632, 21.7575$ is a light color, and the websafe version is hex FFCC99 . A complement of this color would be $200.8090, 16.3632, -21.7575$, and the grayscale version is $209.0000, 0.0000, 0.0000$.

A 20% lighter version of the original color is $252.3780, -10.0464, 2.2995$, and $154.7070, -15.6316, 20.4280$ is the 20% darker color. If you saturate the color by 10%, you get $198.9380, -22.6474, 30.7494$, and if you desaturate by 10%, it is $219.4440, -10.0789, 12.7656$.

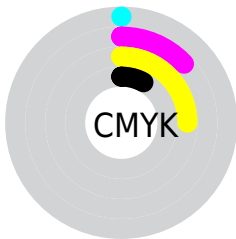
Distribution



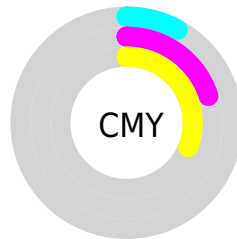
- Red (92%)
- Green (80%)
- Blue (69%)



- Red (92%)
- Yellow (89%)
- Blue (69%)



- Cyan (0%)
- Magenta (13%)
- Yellow (25%)
- Black (8%)



- Cyan (8%)
- Magenta (20%)
- Yellow (31%)

Brightness & Saturation Gradients

These gradients show how the YUV color 209.1910, -16.3632, 21.7575 changes by changing the brightness by 10 percent. The first figure shows a shift by +10% for each color and the second figure -10%.

Similar to the brightness gradients but the following saturation gradients show a change of the YUV color 209.1910, -16.3632, 21.7575 by changing the saturation by 10% instead.

■ 209.1910,
-16.3632, 21.7575

■ 209.1910,
-16.3632, 21.7575

255.0000, 0.0000,
0.0000

■ 181.5930,
-16.0683, 20.5279

■ 252.3780,
-10.0464, 2.2995

■ 154.7070,
-15.6316, 20.4280

■ 128.2230,
-14.8999, 19.0984

■ 103.0380,
-14.3157, 18.3837

■ 78.6680, -13.1473,
16.9542

■ 56.0700, -12.8525,
15.7246

■ 33.9450, -13.2839,

14.0802

■ 12.4810, -6.1531,
13.6102

■ 0.0000, 0.0000,
0.0000

■ 209.1910,
-16.3632, 21.7575

■ 209.1910,
-16.3632, 21.7575

■ 198.9380,
-22.6474, 30.7494

■ 219.4440,
-10.0789, 12.7656

■ 189.1580,
-29.6579, 39.3264

■ 229.2240, -3.0684,
4.1886

■ 178.9050,
-35.9422, 48.3183

■ 239.4770, 3.2158,
-4.8033

■ 169.1250,
-42.9526, 56.8954

■ 247.5470, 3.6743,
-11.8807

■ 158.8720,
-49.2369, 65.8873

■ 248.7210, 3.0955,
-12.9103

■ 149.2060,
-55.8106, 74.3643

■ 138.8390,
-62.5316, 83.4562

■ 133.9490,
-66.0369, 87.7447

Harmonies

Analogous

The Analogous color harmony consists of three colors that are next to each other on the color wheel.



210.5000, -11.5855, 29.3795



209.1910, -16.3632, 21.7575



207.4020, -16.4672, 8.4174

Triad

The Triadic color harmony groups three colors that are evenly spaced from another and form a triangle on the color wheel.



209.1910, -16.3632, 21.7575



202.1700, 5.3392, -32.5981



210.6600, 12.4926, 6.4372

Complementary

The Complementary color scheme is a pair of colors which are on the opposite of each other on the color wheel.



209.1910, -16.3632, 21.7575



200.8090, 16.3632, -21.7575

Split Complementary

Split-complementary colors differ from the complementary color scheme. The scheme consists of three colors, the original color and two neighbors of the complement color.



208.1030, 17.2042, -11.4913



209.1910, -16.3632, 21.7575



202.3360, 13.6384, -34.4977

Square

The Square scheme is like the rectangle color scheme, but the four colors are evenly spaced on the color wheel.



209.1910, -16.3632, 21.7575



203.4180, -4.1501, -22.2916



205.1180, 17.6898, -27.2905



212.0980, 4.8817, 20.9621

Rectangle

The Rectangle color scheme consists of four colors that form a rectangle on the color wheel.



209.1910, -16.3632, 21.7575



206.2050, -14.3981, -1.9338



205.1180, 17.6898, -27.2905



210.0830, 14.2561, 0.8042

Sweetspot

The Sweet Spot groups the original color and five complimentary colors.



209.1910, -16.3632, 21.7575



247.0780, -4.9685, 6.9476



196.9900, 5.4279, 32.4578



123.2240, -3.0684, 4.1886



0.0000, 0.0000, 0.0000



128.0000, 0.0000, 0.0000

Same Dimension

The Same Dimension uses a secret algorithm to generate beautiful new colors.



209.1910, -16.3632, 21.7575



222.2690, -21.3316, 28.7051



225.6270, -24.4661, 7.3431



112.2240, -3.0684, 4.1886



103.4270, -50.9895, 68.0315



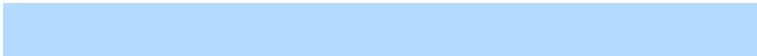
30.8210, -15.1948, 20.3280

Inverse Universe

The Inverse Universe completely reimagines the original color for something new.



200.8090, 16.3632, -21.7575



211.1440, 21.6210, -28.1903



184.3730, 24.4661, -7.3431



110.7760, 3.0684, -4.1886



77.5730, 50.9895, -68.0315



23.1790, 15.1948, -20.3280

Previews

White Background



This preview shows how the YUV color 209.1910, -16.3632, 21.7575 looks on a white background.

Color Contrast Check

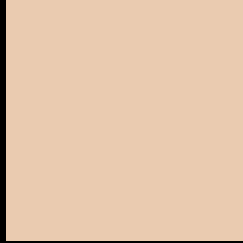
Large Text (above 18pt) WCAG AA × Fail

Any Text WCAG AA × Fail

Large Text (above 18pt) WCAG AAA × Fail

Any Text WCAG AAA × Fail

Black Background



This preview shows how the YUV color 209.1910, -16.3632, 21.7575 looks on a black background.

Color Contrast Check

Large Text (above 18pt) WCAG AA ✓ Pass

Any Text WCAG AA ✓ Pass

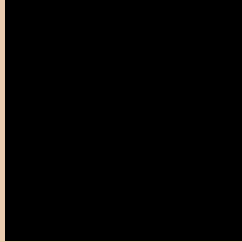
Large Text (above 18pt) WCAG AAA ✓ Pass

Any Text WCAG AAA ✓ Pass

If you want to check with other color combinations, try the [Color Contrast Checker](#).

YUV 209.1910, -16.3632, 21.7575

Background



This preview shows how black text looks on a background with the YUV color 209.1910, -16.3632, 21.7575.



This preview shows how white text looks on a background with the YUV color 209.1910, -16.3632, 21.7575.

21.7575.

Color Blindness Simulation

Color vision deficiency is a very complex topic, and I could not describe the different causes any better than Wikipedia does, so if you want to learn more, you should check out their [article about color blindness](#).

Dichromacy



Original Color

209.1910, -16.3632, 21.7575

Protanopia

207.8690, -14.7254, 9.7619

Deuteranopia

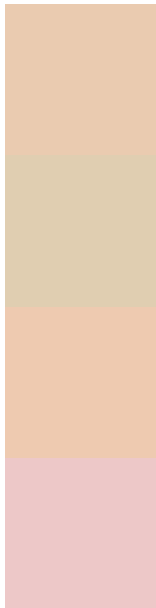
209.8110, -16.6688, 26.4758



Tritanopia

211.6700, 0.6557, 23.0914

Trichromacy



Original Color

209.1910, -16.3632, 21.7575

Protanomaly

208.0760, -15.3205, 13.9653

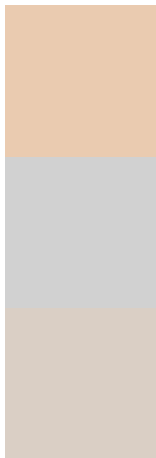
Deuteranomaly

209.8000, -16.6634, 24.7314

Tritanomaly

211.0630, -5.4541, 22.7467

Monochromacy



Original Color

209.1910, -16.3632, 21.7575

Achromatopsia

209.0000, 0.0000, 0.0000

Achromatomaly

209.1490, -5.9895, 7.7623

CSS Examples

Text

The CSS property to change the color of the text to YUV 209.1910, -16.3632, 21.7575 is called "color". The color property can be set on classes, ids or directly on the HTML element.

This example shows how text in the color `rgb(234, 203, 176)` looks like.

```
.text, #text, p{  
    color:rgb(234, 203, 176)  
}
```

If you want to add a text shadow in that color use the text-shadow property, you can generate a text shadow directly with our [CSS Text Shadow Generator](#).

Here you see how black text with a 4 pixel rgb(234, 203, 176) colored shadow looks like.

```
.shadow{ text-shadow: 4px 4px 2px rgb(234, 203, 176) }
```

Border

The CSS property to change the border of an element to YUV 209.1910, -16.3632, 21.7575 is called "border".

The border property can be set on classes, ids or directly on the HTML element.

This example shows the color as border, it can be applied via the CSS property "border" or "border-color".

```
.border, #border, table{ border:4px solid rgb(234, 203, 176) }
```


If only the border color should be changed use the property `border-color`.

```
.border{ border-color:rgb(234, 203, 176) }
```

If you want to add a box shadow in that color use:

Here you see how a box with a 4 pixel `rgb(234, 203, 176)` colored shadow looks like.

```
.boxshadow{ -moz-box-shadow:4px 4px 4px  
4px rgb(234, 203, 176); -webkit-box-  
shadow:4px 4px 4px 4px rgb(234, 203, 176);  
box-shadow:4px 4px 4px 4px rgb(234, 203,  
176) }
```

Background

The CSS property to change the background color of an element to YUV 209.1910, -16.3632, 21.7575 is called "background". The background property can be set on classes, ids or directly on the HTML element.

```
.background, #background, body{  
background: rgb(234, 203, 176) }
```

If only the background color should be changed can be used:

```
.background{ background-color: rgb(234,  
203, 176) }
```

This example shows the color as background, it is applied via the CSS property "background".

To optimize and compress your CSS code, you can use our [online CSS compressor and optimizer](#) based on csstidy. If you want to create a linear or radial gradient as background or border, check our [CSS Gradient Generator](#).

Hey! You found this booklet interesting? Support Converting Colors with the new Membership Option!

The pro membership hides all ads, plus gives you double the colors in the color bucket, and more awesome pro features!

[Learn more, Memberships starting at \\$2.50/m!](#)

**Follow me
on Twitter!**

@ConvertingColor