

Converting Colors

YUV(209.4420, -3.6689,
10.1364)

Have a look what the booklet for
YUV(209.4420, -3.6689, 10.1364)
contains.

YUV(209.4420, -3.6689, 10.1364)	3
<i>Conversions</i>	4
<i>Details</i>	6
<i>Harmonies</i>	12
<i>Previews</i>	24
<i>Color Blindness Simulation</i>	28
<i>CSS Examples</i>	31

Color

**YUV(209.4420, -3.6689,
10.1364)**

Conversions

Conversions Part 1

Format	Color
Hex	DDCDCA
RGB	221, 205, 202
RGB Percent	87%, 80%, 79%
CMY	0.1333, 0.1961, 0.2078
CMYK	0.00, 0.07, 0.09, 0.13
HSL	9°, 22%, 83%
HSV	9°, 9%, 87%
XYZ	62.3108, 63.2991, 64.8109
YIQ	209.4420, 10.4990, 2.4590

Conversions

Conversions Part 2

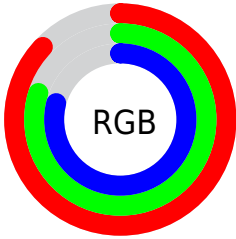
Format	Color
R _Y B	221, 206, 202
Decimal	14536138
CIE Lab	83.60, 5.05, 3.48
CIE LCh	84, 6.133, 34.622
Yxy	63.2991, 0.3272, 0.3324
Android (android.graphics.Color)	4292726218 (0xFFDDCDCA)
YUV	209.4420, -3.6689, 10.1364
Hunter-Lab	79.5607, 0.5674, 7.3943

Details

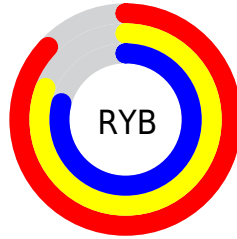
The YUV color $209.4420, -3.6689, 10.1364$ is a light color, and the websafe version is hex `CCCCCC`. A complement of this color would be $213.5580, 3.6689, -10.1364$, and the grayscale version is $209.0000, 0.0000, 0.0000$.

A 20% lighter version of the original color is $255.0000, 0.0000, 0.0000$, and $155.1430, -3.5215, 9.5216$ is the 20% darker color. If you saturate the color by 10%, you get $195.7810, -7.7800, 22.1171$, and if you desaturate by 10%, it is $223.1030, 0.4422, -1.8443$.

Distribution



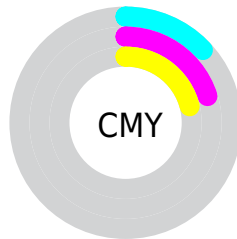
- Red (87%)
- Green (80%)
- Blue (79%)



- Red (87%)
- Yellow (81%)
- Blue (79%)



- Cyan (0%)
- Magenta (7%)
- Yellow (9%)
- Black (13%)



- Cyan (13%)
- Magenta (20%)
- Yellow (21%)

Brightness & Saturation Gradients

These gradients show how the YUV color 209.4420, -3.6689, 10.1364 changes by changing the brightness by 10 percent. The first figure shows a shift by +10% for each color and the second figure -10%.

Similar to the brightness gradients but the following saturation gradients show a change of the YUV color 209.4420, -3.6689, 10.1364 by changing the saturation by 10% instead.

■ 209.4420, -3.6689,
10.1364

■ 209.4420, -3.6689,
10.1364

255.0000, 0.0000,
0.0000

■ 182.1430, -3.5215,
9.5216

■ 155.1430, -3.5215,
9.5216

■ 128.8440, -3.3741,
8.9068

■ 103.8440, -3.3741,
8.9068

■ 79.6590, -2.7899,
8.1921

■ 56.6590, -2.7899,
8.1921

■ 35.0610, -2.4951,

6.9625

■ 13.0290, -3.9583,
9.6216

■ 0.0000, 0.0000,
0.0000

■ 209.4420, -3.6689,
10.1364

■ 209.4420, -3.6689,
10.1364

■ 195.7810, -7.7800,
22.1171

■ 223.1030, 0.4422,
-1.8443

■ 182.7070,
-12.1806, 33.5830

■ 236.1770, 4.8427,
-13.3102

■ 169.0460,
-16.2917, 45.5637

■ 244.8340, 5.0118,
-20.9024

■ 155.9720,
-20.6922, 57.0296

■ 142.3110,
-24.8033, 69.0103

■ 128.5360,
-29.3512, 81.0909

■ 115.4620,
-33.7518, 92.5568

■ 101.8010,
-37.8629, 104.5375

■ 88.7270, -42.2634,
116.0034

Harmonies

Analogous

The Analogous color harmony consists of three colors that are next to each other on the color wheel.



210.1260, -1.0481, 9.5365



209.4420, -3.6689, 10.1364



208.6760, -5.2633, 8.1771

Triad

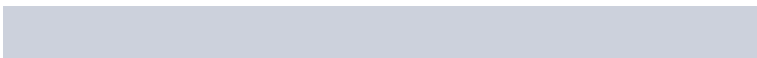
The Triadic color harmony groups three colors that are evenly spaced from another and form a triangle on the color wheel.



209.4420, -3.6689, 10.1364



206.5000, -1.7255, -6.5775



208.7590, 5.5418, -4.1736

Complementary

The Complementary color scheme is a pair of colors which are on the opposite of each other on the color wheel.



209.4420, -3.6689, 10.1364



213.5580, 3.6689, -10.1364

Split Complementary

Split-complementary colors differ from the complementary color scheme. The scheme consists of three colors, the original color and two neighbors of the complement color.



207.4380, 5.7001, -8.2771



209.4420, -3.6689, 10.1364



206.5750, 1.1955, -10.1513

Square

The Square scheme is like the rectangle color scheme, but the four colors are evenly spaced on the color wheel.



209.4420, -3.6689, 10.1364



207.5500, -4.2151, -1.3593



207.2590, 3.8163, -10.7511



209.4500, 4.2152, 1.3594

Rectangle

The Rectangle color scheme consists of four colors that form a rectangle on the color wheel.



209.4420, -3.6689, 10.1364



208.8390, -5.8366, 5.4032



207.2590, 3.8163, -10.7511



207.8620, 5.9840, -6.0180

Sweetspot

The Sweet Spot groups the original color and five complimentary colors.



209.4420, -3.6689, 10.1364



250.5660, -1.7580, 3.8886



209.5050, 4.1880, 10.0811



124.3810, -1.1738, 3.1739



0.0000, 0.0000, 0.0000



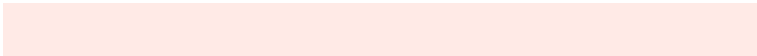
128.0000, 0.0000, 0.0000

Same Dimension

The Same Dimension uses a secret algorithm to generate beautiful new colors.



209.4420, -3.6689, 10.1364



239.8230, -4.8427, 13.3102



214.7250, -6.2734, 5.5032



102.8760, -1.9109, 6.2477



67.5760, -33.3150, 92.4568



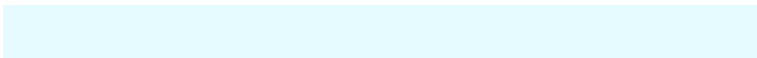
17.8630, -8.8065, 24.6761

Inverse Universe

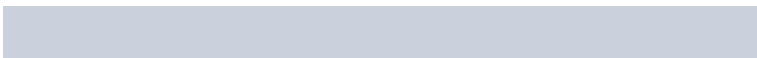
The Inverse Universe completely reimagines the original color for something new.



213.5580, 3.6689, -10.1364



245.1770, 4.8427, -13.3102



208.2750, 6.2734, -5.5032



105.5370, 2.2003, -5.7329



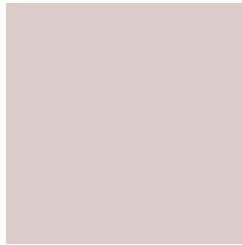
105.4240, 33.3150, -92.4568



28.1370, 8.8065, -24.6761

Previews

White Background



This preview shows how the YUV color 209.4420, -3.6689, 10.1364 looks on a white background.

Color Contrast Check

Large Text (above 18pt) WCAG AA × Fail

Any Text WCAG AA × Fail

Large Text (above 18pt) WCAG AAA × Fail

Any Text WCAG AAA × Fail

Black Background



This preview shows how the YUV color 209.4420, -3.6689, 10.1364 looks on a black background.

Color Contrast Check

Large Text (above 18pt) WCAG AA ✓ Pass

Any Text WCAG AA ✓ Pass

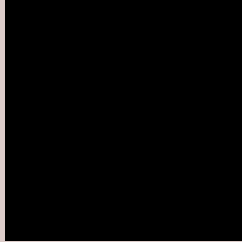
Large Text (above 18pt) WCAG AAA ✓ Pass

Any Text WCAG AAA ✓ Pass

If you want to check with other color combinations, try the [Color Contrast Checker](#).

YUV 209.4420, -3.6689, 10.1364

Background



This preview shows how black text looks on a background with the YUV color 209.4420, -3.6689, 10.1364.



This preview shows how white text looks on a background with the YUV color 209.4420, -3.6689,

Color Blindness Simulation

Color vision deficiency is a very complex topic, and I could not describe the different causes any better than Wikipedia does, so if you want to learn more, you should check out their [article about color blindness](#).

Dichromacy



Original Color

209.4420, -3.6689, 10.1364

Protanopia

208.3380, -2.6316, 4.0886

Deuteranopia

210.7850, -3.8380, 17.7286



Tritanopia

210.1030, 3.8932, 11.3107

Trichromacy



Original Color

209.4420, -3.6689, 10.1364

Protanomaly

208.6480, -2.7845, 6.4477

Deuteranomaly

210.1760, -3.5378, 14.7546

Tritanomaly

209.7070, 1.1304, 10.7810

Monochromacy



Original Color

209.4420, -3.6689, 10.1364

Achromatopsia

209.0000, 0.0000, 0.0000

Achromatomaly

209.2670, -1.6106, 3.2738

CSS Examples

Text

The CSS property to change the color of the text to YUV 209.4420, -3.6689, 10.1364 is called "color". The color property can be set on classes, ids or directly on the HTML element.

This example shows how text in the color `rgb(221, 205, 202)` looks like.

```
.text, #text, p{  
    color:rgb(221, 205, 202)  
}
```

If you want to add a text shadow in that color use the text-shadow property, you can generate a text shadow directly with our [CSS Text Shadow Generator](#).

Here you see how black text with a 4 pixel rgb(221, 205, 202) colored shadow looks like.

```
.shadow{ text-shadow: 4px 4px 2px rgb(221, 205, 202) }
```

Border

The CSS property to change the border of an element to YUV 209.4420, -3.6689, 10.1364 is called "border". The border property can be set on classes, ids or directly on the HTML element.

This example shows the color as border, it can be applied via the CSS property "border" or "border-color".

```
.border, #border, table{ border:4px solid rgb(221, 205, 202) }
```


If only the border color should be changed use the property `border-color`.

```
.border{ border-color:rgb(221, 205, 202) }
```

If you want to add a box shadow in that color use:

Here you see how a box with a 4 pixel `rgb(221, 205, 202)` colored shadow looks like.

```
.boxshadow{ -moz-box-shadow:4px 4px 4px  
4px rgb(221, 205, 202); -webkit-box-  
shadow:4px 4px 4px 4px rgb(221, 205, 202);  
box-shadow:4px 4px 4px 4px rgb(221, 205,  
202) }
```

Background

The CSS property to change the background color of an element to YUV 209.4420, -3.6689, 10.1364 is called "background". The background property can be set on classes, ids or directly on the HTML element.

```
.background, #background, body{  
background: rgb(221, 205, 202) }
```

If only the background color should be changed can be used:

```
.background{ background-color: rgb(221,  
205, 202) }
```

This example shows the color as background, it is applied via the CSS property "background".

To optimize and compress your CSS code, you can use our [online CSS compressor and optimizer](#) based on csstidy. If you want to create a linear or radial gradient as background or border, check our [CSS Gradient Generator](#).

Hey! You found this booklet interesting? Support Converting Colors with the new Membership Option!

The pro membership hides all ads, plus gives you double the colors in the color bucket, and more awesome pro features!

[Learn more, Memberships starting at \\$2.50/m!](#)

**Follow me
on Twitter!**

@ConvertingColor