

Converting Colors

YUV(209.5500, -0.7641,
11.7957)

Have a look what the booklet for
YUV(209.5500, -0.7641, 11.7957)
contains.

YUV(209.5500, -0.7641, 11.7957)	3
<i>Conversions</i>	4
<i>Details</i>	6
<i>Harmonies</i>	12
<i>Previews</i>	24
<i>Color Blindness Simulation</i>	28
<i>CSS Examples</i>	31

Color

**YUV(209.5500, -0.7641,
11.7957)**

Conversions

Conversions Part 1

Format	Color
Hex	DFCBDO
RGB	223, 203, 208
RGB Percent	87%, 80%, 82%
CMY	0.1255, 0.2039, 0.1843
CMYK	0.00, 0.09, 0.07, 0.13
HSL	345°, 24%, 84%
HSV	345°, 9%, 87%
XYZ	63.1725, 62.9539, 68.4963
YIQ	209.5500, 10.3150, 5.7950

Conversions

Conversions Part 2

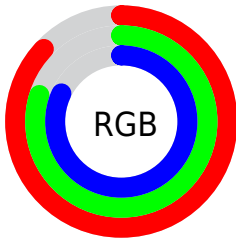
Format	Color
R _Y B	223, 203, 208
Decimal	14666704
CIE Lab	83.42, 7.82, 0.04
CIE LCh	83, 7.822, 0.304
Yxy	62.9539, 0.3246, 0.3235
Android (android.graphics.Color)	4292856784 (0xFFDFCBD0)
YUV	209.5500, -0.7641, 11.7957
Hunter-Lab	79.3435, 3.2688, 4.3561

Details

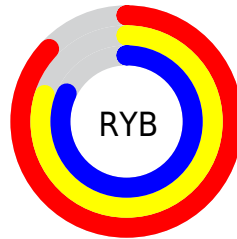
The YUV color $209.5500, -0.7641, 11.7957$ is a light color, and the websafe version is hex `CCCCCC`. A complement of this color would be $216.4500, 0.7642, -11.7956$, and the grayscale version is $210.0000, 0.0000, 0.0000$.

A 20% lighter version of the original color is $255.0000, 0.0000, 0.0000$, and $155.2510, -0.6167, 11.1809$ is the 20% darker color. If you saturate the color by 10%, you get $194.6980, -1.8231, 24.8209$, and if you desaturate by 10%, it is $224.4020, 0.2948, -1.2296$.

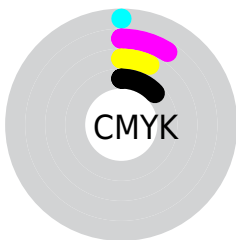
Distribution



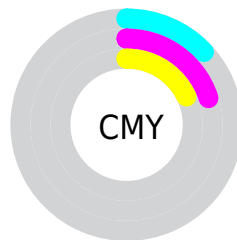
- Red (87%)
- Green (80%)
- Blue (82%)



- Red (87%)
- Yellow (80%)
- Blue (82%)



- Cyan (0%)
- Magenta (9%)
- Yellow (7%)
- Black (13%)



- Cyan (13%)
- Magenta (20%)
- Yellow (18%)

Brightness & Saturation Gradients

These gradients show how the YUV color 209.5500, -0.7641, 11.7957 changes by changing the brightness by 10 percent. The first figure shows a shift by +10% for each color and the second figure -10%.

Similar to the brightness gradients but the following saturation gradients show a change of the YUV color 209.5500, -0.7641, 11.7957 by changing the saturation by 10% instead.

■ 209.5500, -0.7641,
11.7957

■ 209.5500, -0.7641,
11.7957

255.0000, 0.0000,
0.0000

■ 182.1370, -1.0535,
11.2809

■ 155.2510, -0.6167,
11.1809

■ 128.9520, -0.4693,
10.5661

■ 103.9520, -0.4693,
10.5661

■ 79.6530, -0.3219,
9.9513

■ 56.9410, -0.4639,
8.8217

■ 35.6420, -0.3165,

8.2070

■ 12.4790, 0.2569,
10.9809

■ 0.0000, 0.0000,
0.0000

■ 209.5500, -0.7641,
11.7957

■ 209.5500, -0.7641,
11.7957

■ 194.6980, -1.8231,
24.8209

■ 224.4020, 0.2948,
-1.2296

■ 179.3730, -2.1559,
38.2609

■ 239.7270, 0.6276,
-14.6696

■ 164.5210, -3.2149,
51.2861

■ 245.4320, 4.7170,
-19.6729

■ 149.6690, -4.2738,
64.3113

■ 134.2300, -5.0434,
77.8513

■ 119.4920, -5.6656,
90.7765

■ 104.6400, -6.7245,
103.8017

■ 89.7880, -7.7835,
116.8269

■ 74.3490, -8.5531,
130.3669

Harmonies

Analogous

The Analogous color harmony consists of three colors that are next to each other on the color wheel.



209.4400, 2.7411, 7.5071



209.5500, -0.7641, 11.7957



209.0510, -3.9691, 13.1103

Triad

The Triadic color harmony groups three colors that are evenly spaced from another and form a triangle on the color wheel.



209.5500, -0.7641, 11.7957



207.0940, -5.9623, -0.9594



206.6440, 6.5845, -11.9658

Complementary

The Complementary color scheme is a pair of colors which are on the opposite of each other on the color wheel.



209.5500, -0.7641, 11.7957



216.4500, 0.7642, -11.7956

Split Complementary

Split-complementary colors differ from the complementary color scheme. The scheme consists of three colors, the original color and two neighbors of the complement color.



205.7640, 4.5533, -13.8250



209.5500, -0.7641, 11.7957



205.5600, -2.7411, -7.5071

Square

The Square scheme is like the rectangle color scheme, but the four colors are evenly spaced on the color wheel.



209.5500, -0.7641, 11.7957



207.4970, -7.1470, 5.7031



205.5640, 1.2009, -11.8956



207.5030, 7.1470, -5.7031

Rectangle

The Rectangle color scheme consists of four colors that form a rectangle on the color wheel.



209.5500, -0.7641, 11.7957



208.5840, -5.7109, 11.7658



205.5640, 1.2009, -11.8956



206.2310, 6.2951, -12.4806

Sweetspot

The Sweet Spot groups the original color and five complimentary colors.



209.5500, -0.7641, 11.7957



249.6200, -0.3057, 4.7183



209.7650, 6.5249, 7.2221



124.0220, -0.0108, 3.4887



0.0000, 0.0000, 0.0000



128.0000, 0.0000, 0.0000

Same Dimension

The Same Dimension uses a secret algorithm to generate beautiful new colors.



209.5500, -0.7641, 11.7957



236.1700, -1.0698, 16.5139



211.9150, -4.3951, 9.7215



104.6310, -0.3111, 6.4626



57.6400, -6.7245, 103.8017



15.7200, -1.8340, 28.3096

Inverse Universe

The Inverse Universe completely reimagines the original color for something new.



209.5500, -0.7641, 11.7957



236.1700, -1.0698, 16.5139



214.0850, 4.3951, -9.7215



104.6310, -0.3111, 6.4626



57.6400, -6.7245, 103.8017



15.7200, -1.8340, 28.3096

Previews

White Background



This preview shows how the YUV color 209.5500, -0.7641, 11.7957 looks on a white background.

Color Contrast Check

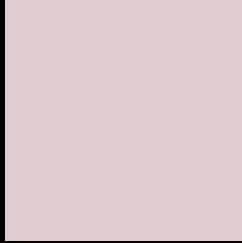
Large Text (above 18pt) WCAG AA × Fail

Any Text WCAG AA × Fail

Large Text (above 18pt) WCAG AAA × Fail

Any Text WCAG AAA × Fail

Black Background



This preview shows how the YUV color 209.5500, -0.7641, 11.7957 looks on a black background.

Color Contrast Check

Large Text (above 18pt) WCAG AA ✓ Pass

Any Text WCAG AA ✓ Pass

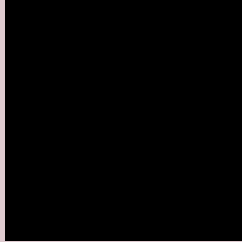
Large Text (above 18pt) WCAG AAA ✓ Pass

Any Text WCAG AAA ✓ Pass

If you want to check with other color combinations, try the [Color Contrast Checker](#).

YUV 209.5500, -0.7641, 11.7957

Background



This preview shows how black text looks on a background with the YUV color 209.5500, -0.7641, 11.7957.



This preview shows how white text looks on a background with the YUV color 209.5500, -0.7641,

Color Blindness Simulation

Color vision deficiency is a very complex topic, and I could not describe the different causes any better than Wikipedia does, so if you want to learn more, you should check out their [article about color blindness](#).

Dichromacy



Original Color

209.5500, -0.7641, 11.7957

Protanopia

208.5380, 0.7208, 2.1592

Deuteranopia

209.8710, -0.9224, 15.8991



Tritanopia

210.2880, 3.3090, 12.0254

Trichromacy



Original Color

209.5500, -0.7641, 11.7957

Protanomaly

209.0330, -0.0163, 5.2331

Deuteranomaly

209.8600, -0.9170, 14.1548

Tritanomaly

209.9460, 1.9986, 12.3254

Monochromacy



Original Color

209.5500, -0.7641, 11.7957

Achromatopsia

210.0000, 0.0000, 0.0000

Achromatomaly

209.6200, -0.3057, 4.7183

CSS Examples

Text

The CSS property to change the color of the text to YUV 209.5500, -0.7641, 11.7957 is called "color". The color property can be set on classes, ids or directly on the HTML element.

This example shows how text in the color `rgb(223, 203, 208)` looks like.

```
.text, #text, p{  
    color:rgb(223, 203, 208)  
}
```

If you want to add a text shadow in that color use the text-shadow property, you can generate a text shadow directly with our [CSS Text Shadow Generator](#).

Here you see how black text with a 4 pixel rgb(223, 203, 208) colored shadow looks like.

```
.shadow{ text-shadow: 4px 4px 2px rgb(223, 203, 208) }
```

Border

The CSS property to change the border of an element to YUV 209.5500, -0.7641, 11.7957 is called "border". The border property can be set on classes, ids or directly on the HTML element.

This example shows the color as border, it can be applied via the CSS property "border" or "border-color".

```
.border, #border, table{ border:4px solid rgb(223, 203, 208) }
```


If only the border color should be changed use the property `border-color`.

```
.border{ border-color:rgb(223, 203, 208) }
```

If you want to add a box shadow in that color use:

Here you see how a box with a 4 pixel `rgb(223, 203, 208)` colored shadow looks like.

```
.boxshadow{ -moz-box-shadow:4px 4px 4px  
4px rgb(223, 203, 208); -webkit-box-  
shadow:4px 4px 4px 4px rgb(223, 203, 208);  
box-shadow:4px 4px 4px 4px rgb(223, 203,  
208) }
```

Background

The CSS property to change the background color of an element to YUV 209.5500, -0.7641, 11.7957 is called "background". The background property can be set on classes, ids or directly on the HTML element.

```
.background, #background, body{  
background: rgb(223, 203, 208) }
```

If only the background color should be changed can be used:

```
.background{ background-color: rgb(223,  
203, 208) }
```

This example shows the color as background, it is applied via the CSS property "background".

To optimize and compress your CSS code, you can use our [online CSS compressor and optimizer](#) based on csstidy. If you want to create a linear or radial gradient as background or border, check our [CSS Gradient Generator](#).

Hey! You found this booklet interesting? Support Converting Colors with the new Membership Option!

The pro membership hides all ads, plus gives you double the colors in the color bucket, and more awesome pro features!

[Learn more, Memberships starting at \\$2.50/m!](#)

**Follow me
on Twitter!**

@ConvertingColor