

Converting Colors

YUV(209.8450, -4.8536,
16.7989)

Have a look what the booklet for
YUV(209.8450, -4.8536, 16.7989)
contains.

YUV(209.8450, -4.8536, 16.7989)	3
<i>Conversions</i>	4
<i>Details</i>	6
<i>Harmonies</i>	12
<i>Previews</i>	24
<i>Color Blindness Simulation</i>	28
<i>CSS Examples</i>	31

Color

**YUV(209.8450, -4.8536,
16.7989)**

Conversions

Conversions Part 1

Format	Color
Hex	E5CAC8
RGB	229, 202, 200
RGB Percent	90%, 79%, 78%
CMY	0.1020, 0.2078, 0.2157
CMYK	0.00, 0.12, 0.13, 0.10
HSL	4°, 36%, 84%
HSV	4°, 13%, 90%
XYZ	63.8590, 63.0692, 63.4514
YIQ	209.8450, 16.7340, 5.1020

Conversions

Conversions Part 2

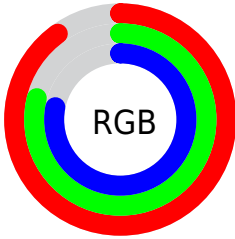
Format	Color
R _Y B	229, 202, 200
Decimal	15059656
CIE Lab	83.48, 9.14, 4.46
CIE LCh	83, 10.166, 26.028
Yxy	63.0692, 0.3354, 0.3313
Android (android.graphics.Color)	4293249736 (0xFFE5CAC8)
YUV	209.8450, -4.8536, 16.7989
Hunter-Lab	79.4161, 4.5547, 8.2201

Details

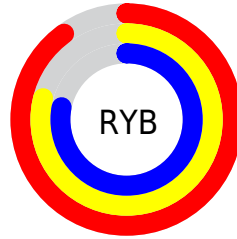
The YUV color $209.8450, -4.8536, 16.7989$ is a light color, and the websafe version is hex FFCCCC . A complement of this color would be $219.1550, 4.8536, -16.7989$, and the grayscale version is $210.0000, 0.0000, 0.0000$.

A 20% lighter version of the original color is $255.0000, 0.0000, 0.0000$, and $155.2470, -4.5588, 15.5694$ is the 20% darker color. If you saturate the color by 10%, you get $194.8960, -8.8227, 29.9092$, and if you desaturate by 10%, it is $224.7940, -0.8844, 3.6887$.

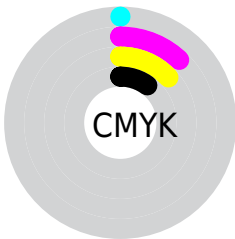
Distribution



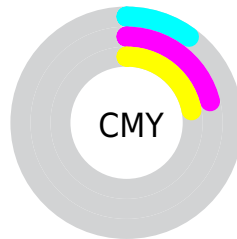
- Red (90%)
- Green (79%)
- Blue (78%)



- Red (90%)
- Yellow (79%)
- Blue (78%)



- Cyan (0%)
- Magenta (12%)
- Yellow (13%)
- Black (10%)



- Cyan (10%)
- Magenta (21%)
- Yellow (22%)

Brightness & Saturation Gradients

These gradients show how the YUV color 209.8450, -4.8536, 16.7989 changes by changing the brightness by 10 percent. The first figure shows a shift by +10% for each color and the second figure -10%.

Similar to the brightness gradients but the following saturation gradients show a change of the YUV color 209.8450, -4.8536, 16.7989 by changing the saturation by 10% instead.

■ 209.8450, -4.8536,
16.7989

■ 209.8450, -4.8536,
16.7989

255.0000, 0.0000,
0.0000

■ 182.5460, -4.7062,
16.1842

■ 155.2470, -4.5588,
15.5694

■ 129.2470, -4.5588,
15.5694

■ 104.0620, -3.9746,
14.8546

■ 79.7630, -3.8272,
14.2398

■ 57.1650, -3.5323,
13.0103

■ 35.5670, -3.2375,

11.7807

■ 12.1330, -4.9956,
15.6694

■ 0.0000, 0.0000,
0.0000

■ 209.8450, -4.8536,
16.7989

■ 209.8450, -4.8536,
16.7989

■ 194.8960, -8.8227,
29.9092

■ 224.7940, -0.8844,
3.6887

■ 179.3600,
-12.5025, 43.5343

■ 240.3300, 2.7953,
-9.9364

■ 164.4110,
-16.4716, 56.6446

■ 247.2260, 3.8326,
-15.9842

■ 149.4620,
-20.4408, 69.7548

■ 133.9260,
-24.1205, 83.3799

■ 119.0910,
-27.6529, 96.3902

■ 104.1420,
-31.6220, 109.5005

■ 88.6060, -35.3018,
123.1255

■ 77.8630, -38.3865,
132.5471

Harmonies

Analogous

The Analogous color harmony consists of three colors that are next to each other on the color wheel.



210.3870, -0.1908, 14.5696



209.8450, -4.8536, 16.7989



209.2100, -8.4845, 14.7248

Triad

The Triadic color harmony groups three colors that are evenly spaced from another and form a triangle on the color wheel.



209.8450, -4.8536, 16.7989



205.5060, -4.1935, -8.3368



207.4640, 9.6312, -9.1769

Complementary

The Complementary color scheme is a pair of colors which are on the opposite of each other on the color wheel.



209.8450, -4.8536, 16.7989



219.1550, 4.8536, -16.7989

Split Complementary

Split-complementary colors differ from the complementary color scheme. The scheme consists of three colors, the original color and two neighbors of the complement color.



206.1920, 8.7793, -15.9544



209.8450, -4.8536, 16.7989



205.3140, 0.3382, -15.1844

Square

The Square scheme is like the rectangle color scheme, but the four colors are evenly spaced on the color wheel.



209.8450, -4.8536, 16.7989



206.9370, -7.8569, 0.0553



205.2580, 5.2958, -18.6433



209.0630, 7.8569, -0.0553

Rectangle

The Rectangle color scheme consists of four colors that form a rectangle on the color wheel.



209.8450, -4.8536, 16.7989



208.6610, -9.1999, 10.8213



205.2580, 5.2958, -18.6433



206.7410, 9.4947, -12.0509

Sweetspot

The Sweet Spot groups the original color and five complimentary colors.



209.8450, -4.8536, 16.7989



248.5770, -1.7635, 5.6330



211.7490, 7.5187, 15.1291



123.6800, -1.3212, 3.7886



0.0000, 0.0000, 0.0000



128.0000, 0.0000, 0.0000

Same Dimension

The Same Dimension uses a secret algorithm to generate beautiful new colors.



209.8450, -4.8536, 16.7989



229.5360, -6.1802, 22.3319



218.0630, -8.9051, 9.5917



107.1750, -2.0583, 6.8625



60.5650, -29.8585, 103.8675



17.5970, -8.6753, 29.2944

Inverse Universe

The Inverse Universe completely reimagines the original color for something new.



219.1550, 4.8536, -16.7989



241.8770, 6.4696, -21.8171



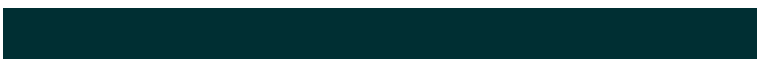
210.9370, 8.9051, -9.5917



110.8250, 2.0583, -6.8625



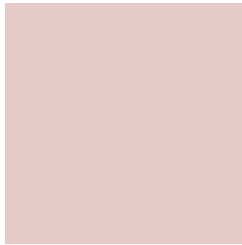
117.8480, 30.1479, -103.3527



33.4030, 8.6753, -29.2944

Previews

White Background



This preview shows how the YUV color 209.8450, -4.8536, 16.7989 looks on a white background.

Color Contrast Check

Large Text (above 18pt) WCAG AA × Fail

Any Text WCAG AA × Fail

Large Text (above 18pt) WCAG AAA × Fail

Any Text WCAG AAA × Fail

Black Background



This preview shows how the YUV color 209.8450, -4.8536, 16.7989 looks on a black background.

Color Contrast Check

Large Text (above 18pt) WCAG AA ✓ Pass

Any Text WCAG AA ✓ Pass

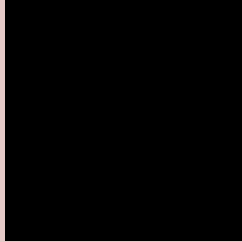
Large Text (above 18pt) WCAG AAA ✓ Pass

Any Text WCAG AAA ✓ Pass

If you want to check with other color combinations, try the [Color Contrast Checker](#).

YUV 209.8450, -4.8536, 16.7989

Background



This preview shows how black text looks on a background with the YUV color 209.8450, -4.8536, 16.7989.



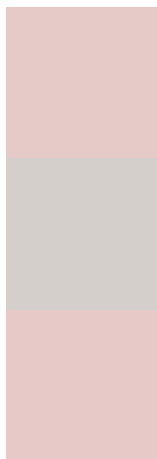
This preview shows how white text looks on a background with the YUV color 209.8450, -4.8536,

16.7989.

Color Blindness Simulation

Color vision deficiency is a very complex topic, and I could not describe the different causes any better than Wikipedia does, so if you want to learn more, you should check out their [article about color blindness](#).

Dichromacy



Original Color

209.8450, -4.8536, 16.7989

Protanopia

208.3380, -2.6316, 4.0886

Deuteranopia

209.8560, -4.8590, 18.5433



Tritanopia

210.9790, 1.9824, 17.5584

Trichromacy



Original Color

209.8450, -4.8536, 16.7989

Protanomaly

208.8440, -3.3741, 8.9068

Deuteranomaly

209.5570, -4.7116, 17.9285

Tritanomaly

210.6970, -0.3436, 16.9287

Monochromacy



Original Color

209.8450, -4.8536, 16.7989

Achromatopsia

210.0000, 0.0000, 0.0000

Achromatomaly

209.8760, -1.9109, 6.2477

CSS Examples

Text

The CSS property to change the color of the text to YUV 209.8450, -4.8536, 16.7989 is called "color". The color property can be set on classes, ids or directly on the HTML element.

This example shows how text in the color `rgb(229, 202, 200)` looks like.

```
.text, #text, p{  
    color:rgb(229, 202, 200)  
}
```

If you want to add a text shadow in that color use the text-shadow property, you can generate a text shadow directly with our [CSS Text Shadow Generator](#).

Here you see how black text with a 4 pixel rgb(229, 202, 200) colored shadow looks like.

```
.shadow{ text-shadow: 4px 4px 2px rgb(229, 202, 200) }
```

Border

The CSS property to change the border of an element to YUV 209.8450, -4.8536, 16.7989 is called "border". The border property can be set on classes, ids or directly on the HTML element.

This example shows the color as border, it can be applied via the CSS property "border" or "border-color".

```
.border, #border, table{ border:4px solid rgb(229, 202, 200) }
```


If only the border color should be changed use the property border-color.

```
.border{ border-color:rgb(229, 202, 200) }
```

If you want to add a box shadow in that color use:

Here you see how a box with a 4 pixel rgb(229, 202, 200) colored shadow looks like.

```
.boxshadow{ -moz-box-shadow:4px 4px 4px  
4px rgb(229, 202, 200); -webkit-box-  
shadow:4px 4px 4px 4px rgb(229, 202, 200);  
box-shadow:4px 4px 4px 4px rgb(229, 202,  
200) }
```

Background

The CSS property to change the background color of an element to YUV 209.8450, -4.8536, 16.7989 is called "background". The background property can be set on classes, ids or directly on the HTML element.

```
.background, #background, body{  
background: rgb(229, 202, 200) }
```

If only the background color should be changed can be used:

```
.background{ background-color: rgb(229,  
202, 200) }
```

This example shows the color as background, it is applied via the CSS property "background".

To optimize and compress your CSS code, you can use our [online CSS compressor and optimizer](#) based on csstidy. If you want to create a linear or radial gradient as background or border, check our [CSS Gradient Generator](#).

Hey! You found this booklet interesting? Support Converting Colors with the new Membership Option!

The pro membership hides all ads, plus gives you double the colors in the color bucket, and more awesome pro features!

[Learn more, Memberships starting at \\$2.50/m!](#)

**Follow me
on Twitter!**

@ConvertingColor