

Converting Colors

YUV(21.4870, -8.6211, 11.8509)

Have a look what the booklet for
YUV(21.4870, -8.6211, 11.8509)
contains.

YUV(21.4870, -8.6211, 11.8509)	3
<i>Conversions</i>	4
<i>Details</i>	6
<i>Harmonies</i>	12
<i>Previews</i>	24
<i>Color Blindness Simulation</i>	28
<i>CSS Examples</i>	31

Color

**YUV(21.4870, -8.6211,
11.8509)**

Conversions

Conversions Part 1

Format	Color
Hex	231204
RGB	35, 18, 4
RGB Percent	14%, 7%, 2%
CMY	0.8627, 0.9294, 0.9843
CMYK	0.00, 0.49, 0.89, 0.86
HSL	27°, 79%, 8%
HSV	27°, 89%, 14%
XYZ	0.9314, 0.7987, 0.2199
YIQ	21.4870, 14.6260, -0.7500

Conversions

Conversions Part 2

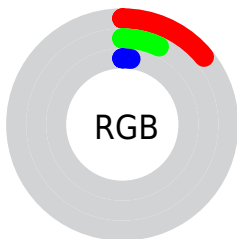
Format	Color
RYB	35, 30, 4
Decimal	2298372
CIELab	7.21, 6.93, 9.29
CIELCh	7, 11.594, 53.281
Yxy	0.7987, 0.4776, 0.4096
Android (android.graphics.Color)	4280488452 (0xFF231204)
YUV	21.4870, -8.6211, 11.8509
Hunter-Lab	8.9370, 2.9623, 4.7968

Details

The YUV color **21.4870, -8.6211, 11.8509** is a dark color, and the websafe version is hex **000000**. A complement of this color would be **17.5130, 8.6211, -11.8509**, and the grayscale version is **22.0000, 0.0000, 0.0000**.

A 20% lighter version of the original color is **64.8400, -7.3161, 13.2953**, and **0.0000, 0.0000, 0.0000** is the 20% darker color. If you saturate the color by 10%, you get **19.9710, -9.3527, 13.1804**, and if you desaturate by 10%, it is **23.1170, -7.4527, 10.4214**.

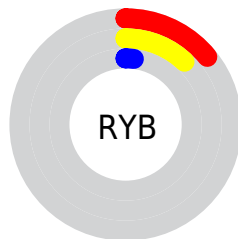
Distribution



Red (14%)

Green (7%)

Blue (2%)



Red (14%)

Yellow (12%)

Blue (2%)

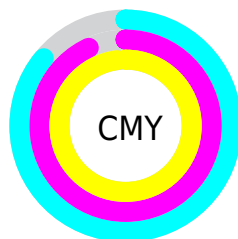


Cyan (0%)

Magenta (49%)

Yellow (89%)

Black (86%)



Cyan (86%)

Magenta (93%)

Yellow (98%)

Brightness & Saturation Gradients

These gradients show how the YUV color 21.4870, -8.6211, 11.8509 changes by changing the brightness by 10 percent. The first figure shows a shift by +10% for each color and the second figure -10%.

Similar to the brightness gradients but the following saturation gradients show a change of the YUV color 21.4870, -8.6211, 11.8509 by changing the saturation by 10% instead.

■ 21.4870, -8.6211,
11.8509

■ 21.4870, -8.6211,
11.8509

■ 244.4050, -7.5947,
9.2918

■ 0.0000, 0.0000,
0.0000

■ 64.8400, -7.3161,
13.2953

■ 88.1390, -7.4635,
13.9101

■ 112.7370, -7.7583,
15.1397

■ 138.6230, -8.1951,
15.2396

■ 164.8080, -8.7793,
15.9544

■ 192.1070, -8.9268,

16.5692

■ 219.9930, -9.3635,
16.6691

■ 21.4870, -8.6211,
11.8509

■ 21.4870, -8.6211,
11.8509

■ 19.9710, -9.3527,
13.1804

■ 23.1170, -7.4527,
10.4214

■ 19.8570, -9.7895,
13.2804

■ 24.6330, -6.7211,
9.0919

■ 26.2630, -5.5527,
7.6623

■ 27.7790, -4.8210,
6.3328

■ 29.4090, -3.6526,
4.9033

■ 30.9250, -2.9210,
3.5738

■ 31.9680, -1.4632,
2.6591

■ 33.4840, -0.7316,
1.3295

■ 35.1140, 0.4368,
-0.1000

Harmonies

Analogous

The Analogous color harmony consists of three colors that are next to each other on the color wheel.



22.1650, -3.5323, 13.0103



21.4870, -8.6211, 11.8509



21.2970, -10.4994, 7.6325

Triad

The Triadic color harmony groups three colors that are evenly spaced from another and form a triangle on the color wheel.



21.4870, -8.6211, 11.8509



18.1290, 0.9224, -15.8991



22.4110, 6.6994, -2.1144

Complementary

The Complementary color scheme is a pair of colors which are on the opposite of each other on the color wheel.



21.4870, -8.6211, 11.8509



17.5130, 8.6211, -11.8509

Split Complementary

Split-complementary colors differ from the complementary color scheme. The scheme consists of three colors, the original color and two neighbors of the complement color.



19.5130, 8.6211, -11.8509



21.4870, -8.6211, 11.8509



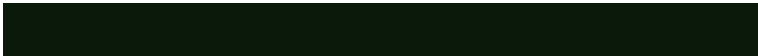
19.0410, 4.4168, -16.6990

Square

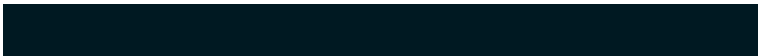
The Square scheme is like the rectangle color scheme, but the four colors are evenly spaced on the color wheel.



21.4870, -8.6211, 11.8509



18.6910, -4.7777, -7.6220



18.5510, 7.6164, -16.2692



23.0700, 3.9095, 6.0776

Rectangle

The Rectangle color scheme consists of four colors that form a rectangle on the color wheel.



21.4870, -8.6211, 11.8509



20.3890, -10.0518, 4.0438



18.5510, 7.6164, -16.2692



21.9160, 7.4364, -5.1883

Sweetspot

The Sweet Spot groups the original color and five complimentary colors.



21.4870, -8.6211, 11.8509



40.5230, -3.2158, 4.8033



15.2070, 2.8559, 17.3585



19.8540, -1.9000, 2.7590



150.0000, 0.0000, 0.0000



23.0000, 0.0000, 0.0000

Same Dimension

The Same Dimension uses a secret algorithm to generate beautiful new colors.



21.4870, -8.6211, 11.8509



26.0810, -12.8579, 17.4690



30.2920, -12.9620, 4.1289



17.1850, -0.5842, 0.7148



46.2370, -22.7948, 31.3642



117.6690, -58.0108, 80.0973

Inverse Universe

The Inverse Universe completely reimagines the original color for something new.



17.5130, 8.6211, -11.8509



19.9190, 12.8579, -17.4690



8.7080, 12.9620, -4.1289



16.8150, 0.5842, -0.7148



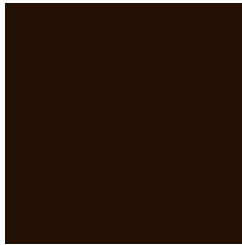
35.7630, 22.7948, -31.3642



91.3310, 58.0108, -80.0973

Previews

White Background



This preview shows how the YUV color 21.4870, -8.6211, 11.8509 looks on a white background.

Color Contrast Check

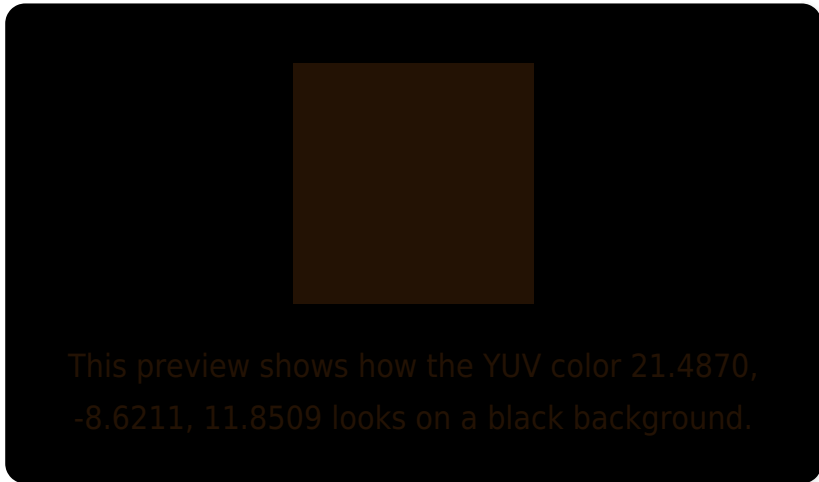
Large Text (above 18pt) WCAG AA ✓ Pass

Any Text WCAG AA ✓ Pass

Large Text (above 18pt) WCAG AAA ✓ Pass

Any Text WCAG AAA ✓ Pass

Black Background



Color Contrast Check

Large Text (above 18pt) WCAG AA × Fail

Any Text WCAG AA × Fail

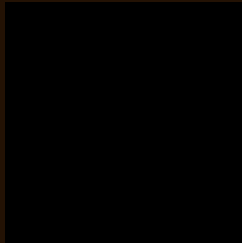
Large Text (above 18pt) WCAG AAA × Fail

Any Text WCAG AAA × Fail

If you want to check with other color combinations, try the [Color Contrast Checker](#).

YUV 21.4870, -8.6211, 11.8509

Background



This preview shows how black text looks on a background with the YUV color 21.4870, -8.6211, 11.8509.



This preview shows how white text looks on a background with the YUV color 21.4870, -8.6211,

Color Blindness Simulation

Color vision deficiency is a very complex topic, and I could not describe the different causes any better than Wikipedia does, so if you want to learn more, you should check out their [article about color blindness](#).

Dichromacy



Original Color

21.4870, -8.6211, 11.8509

Protanopia

21.8450, -8.3046, 3.6439

Deuteranopia

21.5850, -10.6414, 6.5030



Tritanopia

22.7950, -2.3639, 11.5808

Trichromacy



Original Color

21.4870, -8.6211, 11.8509

Protanomaly

21.5680, -8.1680, 6.5179

Deuteranomaly

21.7100, -10.2100, 8.1473

Tritanomaly

22.2250, -4.5479, 12.0807

Monochromacy



Original Color

21.4870, -8.6211, 11.8509

Achromatopsia

21.0000, 0.0000, 0.0000

Achromatomaly

21.2240, -3.0684, 4.1886

CSS Examples

Text

The CSS property to change the color of the text to YUV 21.4870, -8.6211, 11.8509 is called "color". The color property can be set on classes, ids or directly on the HTML element.

This example shows how text in the color `rgb(35, 18, 4)` looks like.

```
.text, #text, p{  
    color:rgb(35, 18, 4)  
}
```

If you want to add a text shadow in that color use the text-shadow property, you can generate a text shadow directly with our [CSS Text Shadow Generator](#).

Here you see how black text with a 4 pixel rgb(35, 18, 4) colored shadow looks like.

```
.shadow{ text-shadow: 4px 4px 2px rgb(35, 18, 4) }
```

Border

The CSS property to change the border of an element to YUV 21.4870, -8.6211, 11.8509 is called "border". The border property can be set on classes, ids or directly on the HTML element.

This example shows the color as border, it can be applied via the CSS property "border" or "border-color".

```
.border, #border, table{ border:4px solid rgb(35, 18, 4) }
```


If only the border color should be changed use the property border-color.

```
.border{ border-color:rgb(35, 18, 4) }
```

If you want to add a box shadow in that color use:

Here you see how a box with a 4 pixel rgb(35, 18, 4) colored shadow looks like.

```
.boxshadow{ -moz-box-shadow:4px 4px 4px  
4px rgb(35, 18, 4); -webkit-box-shadow:4px  
4px 4px 4px rgb(35, 18, 4); box-shadow:4px  
4px 4px 4px rgb(35, 18, 4) }
```

Background

The CSS property to change the background color of an element to YUV 21.4870, -8.6211, 11.8509 is called "background". The background property can be set on classes, ids or directly on the HTML element.

```
.background, #background, body{  
background: rgb(35, 18, 4) }
```

If only the background color should be changed can be used:

```
.background{ background-color: rgb(35, 18,  
4) }
```

This example shows the color as background, it is applied via the CSS property "background".

To optimize and compress your CSS code, you can use our [online CSS compressor and optimizer](#) based on csstidy. If you want to create a linear or radial gradient as background or border, check our [CSS Gradient Generator](#).

Hey! You found this booklet interesting? Support Converting Colors with the new Membership Option!

The pro membership hides all ads, plus gives you double the colors in the color bucket, and more awesome pro features!

[Learn more, Memberships starting at \\$2.50/m!](#)

**Follow me
on Twitter!**

@ConvertingColor