

Converting Colors

YUV(210.0580, -7.9166,
19.2431)

Have a look what the booklet for
YUV(210.0580, -7.9166, 19.2431)
contains.

YUV(210.0580, -7.9166, 19.2431)	3
<i>Conversions</i>	4
<i>Details</i>	6
<i>Harmonies</i>	12
<i>Previews</i>	24
<i>Color Blindness Simulation</i>	28
<i>CSS Examples</i>	31

Color

**YUV(210.0580, -7.9166,
19.2431)**

Conversions

Conversions Part 1

Format	Color
Hex	E8CAC2
RGB	232, 202, 194
RGB Percent	91%, 79%, 76%
CMY	0.0902, 0.2078, 0.2392
CMYK	0.00, 0.13, 0.16, 0.09
HSL	13°, 45%, 84%
HSV	13°, 16%, 91%
XYZ	64.1368, 63.2919, 59.8751
YIQ	210.0580, 20.4480, 3.8720

Conversions

Conversions Part 2

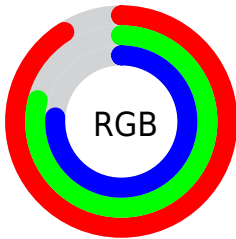
Format	Color
R _Y B	232, 204, 194
Decimal	15256258
CIE Lab	83.60, 9.27, 7.86
CIE LCh	84, 12.152, 40.316
Yxy	63.2919, 0.3424, 0.3379
Android (android.graphics.Color)	4293446338 (0xFFE8CAC2)
YUV	210.0580, -7.9166, 19.2431
Hunter-Lab	79.5562, 4.6803, 11.0669

Details

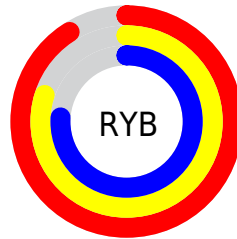
The YUV color $210.0580, -7.9166, 19.2431$ is a light color, and the websafe version is hex FFCCCC . A complement of this color would be $215.9420, 7.9166, -19.2431$, and the grayscale version is $210.0000, 0.0000, 0.0000$.

A 20% lighter version of the original color is $254.4300, -2.1840, 0.4999$, and $155.4600, -7.6218, 18.0136$ is the 20% darker color. If you saturate the color by 10%, you get $196.8700, -12.7539, 30.8090$, and if you desaturate by 10%, it is $223.2460, -3.0793, 7.6773$.

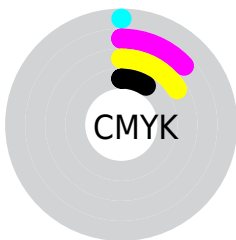
Distribution



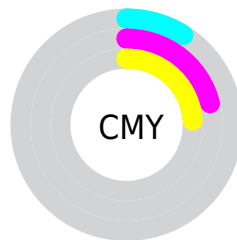
- Red (91%)
- Green (79%)
- Blue (76%)



- Red (91%)
- Yellow (80%)
- Blue (76%)



- Cyan (0%)
- Magenta (13%)
- Yellow (16%)
- Black (9%)



- Cyan (9%)
- Magenta (21%)
- Yellow (24%)

Brightness & Saturation Gradients

These gradients show how the YUV color 210.0580, -7.9166, 19.2431 changes by changing the brightness by 10 percent. The first figure shows a shift by +10% for each color and the second figure -10%.

Similar to the brightness gradients but the following saturation gradients show a change of the YUV color 210.0580, -7.9166, 19.2431 by changing the saturation by 10% instead.

210.0580, -7.9166,
19.2431

210.0580, -7.9166,
19.2431

255.0000, 0.0000,
0.0000

182.7590, -7.7692,
18.6284

254.4300, -2.1840,
0.4999

155.4600, -7.6218,
18.0136

129.2750, -7.0376,
17.2988

103.9760, -6.8902,
16.6840

79.7910, -6.3060,
15.9693

56.8940, -5.8637,
14.1250

35.2960, -5.5689,

12.8954

■ 12.2040, -6.0166,
16.4841

■ 0.0000, 0.0000,
0.0000

■ 210.0580, -7.9166,
19.2431

■ 210.0580, -7.9166,
19.2431

■ 196.8700,
-12.7539, 30.8090

■ 223.2460, -3.0793,
7.6773

■ 183.0950,
-17.3018, 42.8897

■ 237.0210, 1.4686,
-4.4034

■ 169.7930,
-22.5759, 54.5555

■ 248.1230, 3.3904,
-14.1399

■ 156.6050,
-27.4133, 66.1214

■ 142.8300,
-31.9612, 78.2021

■ 129.6420,
-36.7985, 89.7680

■ 116.4540,
-41.6358, 101.3338

■ 102.5650,
-46.6205, 113.5145

■ 98.1310, -48.3786,
117.4031

Harmonies

Analogous

The Analogous color harmony consists of three colors that are next to each other on the color wheel.



211.0240, -2.9698, 19.2730



210.0580, -7.9166, 19.2431



208.9280, -10.8105, 14.0951

Triad

The Triadic color harmony groups three colors that are evenly spaced from another and form a triangle on the color wheel.



210.0580, -7.9166, 19.2431



205.2170, -2.5720, -15.0993



208.5290, 11.0782, -6.6029

Complementary

The Complementary color scheme is a pair of colors which are on the opposite of each other on the color wheel.



210.0580, -7.9166, 19.2431



215.9420, 7.9166, -19.2431

Split Complementary

Split-complementary colors differ from the complementary color scheme. The scheme consists of three colors, the original color and two neighbors of the complement color.



206.7620, 10.9633, -16.4543



210.0580, -7.9166, 19.2431



204.4920, 3.7014, -20.6025

Square

The Square scheme is like the rectangle color scheme, but the four colors are evenly spaced on the color wheel.



210.0580, -7.9166, 19.2431



206.0180, -7.4039, -5.2778



205.1590, 8.7956, -21.1874



210.0960, 7.8407, 5.1778

Rectangle

The Rectangle color scheme consists of four colors that form a rectangle on the color wheel.



210.0580, -7.9166, 19.2431



208.4820, -11.0836, 8.3473



205.1590, 8.7956, -21.1874



207.9200, 11.3784, -9.5768

Sweetspot

The Sweet Spot groups the original color and five complimentary colors.



210.0580, -7.9166, 19.2431



247.6480, -2.7845, 6.4477



208.7820, 7.5025, 20.3622



122.9790, -1.4686, 4.4034



0.0000, 0.0000, 0.0000



128.0000, 0.0000, 0.0000

Same Dimension

The Same Dimension uses a secret algorithm to generate beautiful new colors.



210.0580, -7.9166, 19.2431



225.7060, -10.7011, 25.6908



221.2110, -13.4150, 9.4620



108.3490, -2.6371, 5.8329



75.8270, -37.3827, 90.4827



21.7060, -10.7011, 25.6908

Inverse Universe

The Inverse Universe completely reimagines the original color for something new.



215.9420, 7.9166, -19.2431



233.2940, 10.7011, -25.6908



204.7890, 13.4150, -9.4620



109.6510, 2.6371, -5.8329



103.1730, 37.3827, -90.4827



29.2940, 10.7011, -25.6908

Previews

White Background



This preview shows how the YUV color 210.0580, -7.9166, 19.2431 looks on a white background.

Color Contrast Check

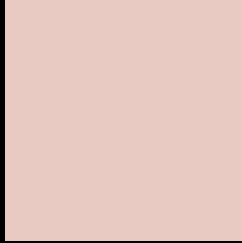
Large Text (above 18pt) WCAG AA × Fail

Any Text WCAG AA × Fail

Large Text (above 18pt) WCAG AAA × Fail

Any Text WCAG AAA × Fail

Black Background



This preview shows how the YUV color 210.0580, -7.9166, 19.2431 looks on a black background.

Color Contrast Check

Large Text (above 18pt) WCAG AA ✓ Pass

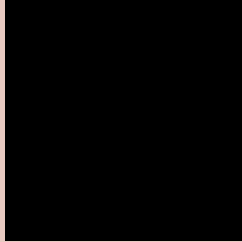
Any Text WCAG AA ✓ Pass

Large Text (above 18pt) WCAG AAA ✓ Pass

Any Text WCAG AAA ✓ Pass

If you want to check with other color combinations, try the [Color Contrast Checker](#).

YUV 210.0580, -7.9166, 19.2431 Background



This preview shows how black text looks on a background with the YUV color 210.0580, -7.9166, 19.2431.



This preview shows how white text looks on a background with the YUV color 210.0580, -7.9166,

Color Blindness Simulation

Color vision deficiency is a very complex topic, and I could not describe the different causes any better than Wikipedia does, so if you want to learn more, you should check out their [article about color blindness](#).

Dichromacy



Original Color

210.0580, -7.9166, 19.2431

Protanopia

208.8390, -5.8366, 5.4032

Deuteranopia

210.0690, -7.9220, 20.9875



Tritanopia

211.4740, 1.2453, 20.6323

Trichromacy



Original Color

210.0580, -7.9166, 19.2431

Protanomaly

209.3450, -6.5791, 10.2214

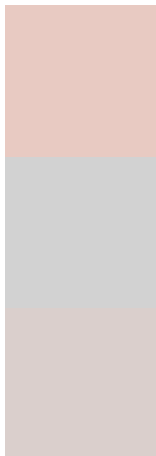
Deuteranomaly

209.7700, -7.7746, 20.3727

Tritanomaly

210.9640, -1.9543, 20.2026

Monochromacy



Original Color

210.0580, -7.9166, 19.2431

Achromatopsia

210.0000, 0.0000, 0.0000

Achromatomaly

209.9470, -2.9319, 7.0625

CSS Examples

Text

The CSS property to change the color of the text to YUV 210.0580, -7.9166, 19.2431 is called "color". The color property can be set on classes, ids or directly on the HTML element.

This example shows how text in the color `rgb(232, 202, 194)` looks like.

```
.text, #text, p{  
    color:rgb(232, 202, 194)  
}
```

If you want to add a text shadow in that color use the text-shadow property, you can generate a text shadow directly with our [CSS Text Shadow Generator](#).

Here you see how black text with a 4 pixel rgb(232, 202, 194) colored shadow looks like.

```
.shadow{ text-shadow: 4px 4px 2px rgb(232, 202, 194) }
```

Border

The CSS property to change the border of an element to YUV 210.0580, -7.9166, 19.2431 is called "border". The border property can be set on classes, ids or directly on the HTML element.

This example shows the color as border, it can be applied via the CSS property "border" or "border-color".

```
.border, #border, table{ border:4px solid rgb(232, 202, 194) }
```


If only the border color should be changed use the property border-color.

```
.border{ border-color:rgb(232, 202, 194) }
```

If you want to add a box shadow in that color use:

Here you see how a box with a 4 pixel rgb(232, 202, 194) colored shadow looks like.

```
.boxshadow{ -moz-box-shadow:4px 4px 4px  
4px rgb(232, 202, 194); -webkit-box-  
shadow:4px 4px 4px 4px rgb(232, 202, 194);  
box-shadow:4px 4px 4px 4px rgb(232, 202,  
194) }
```

Background

The CSS property to change the background color of an element to YUV 210.0580, -7.9166, 19.2431 is called "background". The background property can be set on classes, ids or directly on the HTML element.

```
.background, #background, body{  
background: rgb(232, 202, 194) }
```

If only the background color should be changed can be used:

```
.background{ background-color: rgb(232,  
202, 194) }
```

This example shows the color as background, it is applied via the CSS property "background".

To optimize and compress your CSS code, you can use our [online CSS compressor and optimizer](#) based on csstidy. If you want to create a linear or radial gradient as background or border, check our [CSS Gradient Generator](#).

Hey! You found this booklet interesting? Support Converting Colors with the new Membership Option!

The pro membership hides all ads, plus gives you double the colors in the color bucket, and more awesome pro features!

[Learn more, Memberships starting at \\$2.50/m!](#)

**Follow me
on Twitter!**

@ConvertingColor