

Converting Colors

YUV(210.2080, -2.0745,
12.0956)

Have a look what the booklet for
YUV(210.2080, -2.0745, 12.0956)
contains.

YUV(210.2080, -2.0745, 12.0956)	3
<i>Conversions</i>	4
<i>Details</i>	6
<i>Harmonies</i>	12
<i>Previews</i>	24
<i>Color Blindness Simulation</i>	28
<i>CSS Examples</i>	31

Color

**YUV(210.2080, -2.0745,
12.0956)**

Conversions

Conversions Part 1

Format	Color
Hex	E0CCCE
RGB	224, 204, 206
RGB Percent	88%, 80%, 81%
CMY	0.1216, 0.2000, 0.1922
CMYK	0.00, 0.09, 0.08, 0.12
HSL	354°, 24%, 84%
HSV	354°, 9%, 88%
XYZ	63.4739, 63.4893, 67.3017
YIQ	210.2080, 11.2780, 4.8620

Conversions

Conversions Part 2

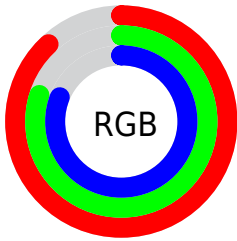
Format	Color
RYB	224, 204, 206
Decimal	14732494
CIELab	83.70, 7.30, 1.53
CIELCh	84, 7.462, 11.818
Yxy	63.4893, 0.3267, 0.3268
Android (android.graphics.Color)	4292922574 (0xFFE0CCCE)
YUV	210.2080, -2.0745, 12.0956
Hunter-Lab	79.6801, 2.7544, 5.6969

Details

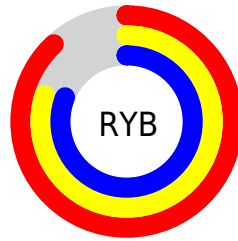
The YUV color $210.2080, -2.0745, 12.0956$ is a light color, and the websafe version is hex `CCCCCC`. A complement of this color would be $217.7920, 2.0745, -12.0956$, and the grayscale version is $210.0000, 0.0000, 0.0000$.

A 20% lighter version of the original color is $255.0000, 0.0000, 0.0000$, and $155.9090, -1.9271, 11.4808$ is the 20% darker color. If you saturate the color by 10%, you get $195.0140, -4.4439, 25.4207$, and if you desaturate by 10%, it is $225.4020, 0.2948, -1.2296$.

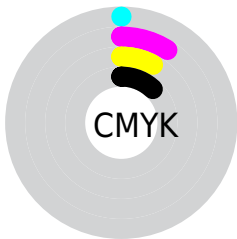
Distribution



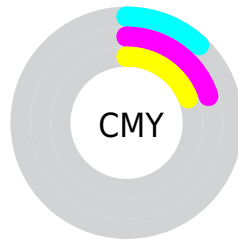
- Red (88%)
- Green (80%)
- Blue (81%)



- Red (88%)
- Yellow (80%)
- Blue (81%)



- Cyan (0%)
- Magenta (9%)
- Yellow (8%)
- Black (12%)



- Cyan (12%)
- Magenta (20%)
- Yellow (19%)

Brightness & Saturation Gradients

These gradients show how the YUV color 210.2080, -2.0745, 12.0956 changes by changing the brightness by 10 percent. The first figure shows a shift by +10% for each color and the second figure -10%.

Similar to the brightness gradients but the following saturation gradients show a change of the YUV color 210.2080, -2.0745, 12.0956 by changing the saturation by 10% instead.

■ 210.2080, -2.0745,
12.0956

■ 210.2080, -2.0745,
12.0956

255.0000, 0.0000,
0.0000

■ 182.9090, -1.9271,
11.4808

■ 155.9090, -1.9271,
11.4808

■ 129.6100, -1.7797,
10.8660

■ 104.6100, -1.7797,
10.8660

■ 80.3110, -1.6323,
10.2513

■ 57.5990, -1.7743,
9.1217

■ 35.7130, -1.3375,

9.0217

■ 13.6100, -1.7797,
10.8660

■ 0.0000, 0.0000,
0.0000

■ 210.2080, -2.0745,
12.0956

■ 210.2080, -2.0745,
12.0956

■ 195.0140, -4.4439,
25.4207

■ 225.4020, 0.2948,
-1.2296

■ 179.2330, -6.5239,
39.2607

■ 241.1830, 2.3748,
-15.0695

■ 164.0390, -8.8932,
52.5858

■ 245.7310, 4.5696,
-19.0581

■ 148.1440,
-11.4100, 66.5257

■ 132.9500,
-13.7793, 79.8509

■ 117.7560,
-16.1487, 93.1760

■ 101.9750,
-18.2287, 107.0159

■ 86.7810, -20.5980,
120.3411

■ 71.0000, -22.6780,
134.1810

Harmonies

Analogous

The Analogous color harmony consists of three colors that are next to each other on the color wheel.



209.8100, 1.5727, 8.9366



210.2080, -2.0745, 12.0956



209.8120, -4.8373, 11.5659

Triad

The Triadic color harmony groups three colors that are evenly spaced from another and form a triangle on the color wheel.



210.2080, -2.0745, 12.0956



207.1260, -4.4991, -3.6185



208.0680, 6.8685, -9.7066

Complementary

The Complementary color scheme is a pair of colors which are on the opposite of each other on the color wheel.



210.2080, -2.0745, 12.0956



217.7920, 2.0745, -12.0956

Split Complementary

Split-complementary colors differ from the complementary color scheme. The scheme consists of three colors, the original color and two neighbors of the complement color.



206.7040, 5.5689, -12.8954



210.2080, -2.0745, 12.0956



206.8910, -1.4253, -9.5514

Square

The Square scheme is like the rectangle color scheme, but the four colors are evenly spaced on the color wheel.



210.2080, -2.0745, 12.0956



208.3010, -6.5574, 3.2440



206.4930, 2.2220, -12.7104



208.6990, 6.5574, -3.2440

Rectangle

The Rectangle color scheme consists of four colors that form a rectangle on the color wheel.



210.2080, -2.0745, 12.0956



209.3450, -6.5791, 10.2214



206.4930, 2.2220, -12.7104



207.3560, 6.7265, -10.8362

Sweetspot

The Sweet Spot groups the original color and five complimentary colors.



210.2080, -2.0745, 12.0956



249.5060, -0.7425, 4.8182



211.6620, 6.0826, 9.0664



123.9080, -0.4476, 3.5887



0.0000, 0.0000, 0.0000



128.0000, 0.0000, 0.0000

Same Dimension

The Same Dimension uses a secret algorithm to generate beautiful new colors.



210.2080, -2.0745, 12.0956



235.7140, -2.8170, 16.9138



214.6760, -5.2633, 8.1771



104.4030, -1.1847, 6.6626



54.6760, -18.0813, 106.4011



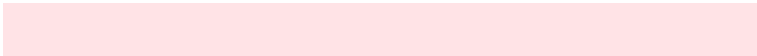
14.9220, -4.8915, 29.0094

Inverse Universe

The Inverse Universe completely reimagines the original color for something new.



210.2080, -2.0745, 12.0956



235.7140, -2.8170, 16.9138



213.3240, 5.2633, -8.1771



104.4030, -1.1847, 6.6626



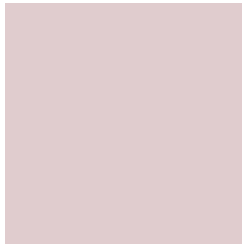
54.6760, -18.0813, 106.4011



14.9220, -4.8915, 29.0094

Previews

White Background



This preview shows how the YUV color 210.2080, -2.0745, 12.0956 looks on a white background.

Color Contrast Check

Large Text (above 18pt) WCAG AA × Fail

Any Text WCAG AA × Fail

Large Text (above 18pt) WCAG AAA × Fail

Any Text WCAG AAA × Fail

Black Background



This preview shows how the YUV color 210.2080, -2.0745, 12.0956 looks on a black background.

Color Contrast Check

Large Text (above 18pt) WCAG AA ✓ Pass

Any Text WCAG AA ✓ Pass

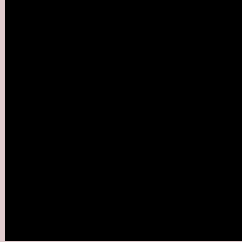
Large Text (above 18pt) WCAG AAA ✓ Pass

Any Text WCAG AAA ✓ Pass

If you want to check with other color combinations, try the [Color Contrast Checker](#).

YUV 210.2080, -2.0745, 12.0956

Background



This preview shows how black text looks on a background with the YUV color 210.2080, -2.0745, 12.0956.



This preview shows how white text looks on a background with the YUV color 210.2080, -2.0745,

Color Blindness Simulation

Color vision deficiency is a very complex topic, and I could not describe the different causes any better than Wikipedia does, so if you want to learn more, you should check out their [article about color blindness](#).

Dichromacy



Original Color

210.2080, -2.0745, 12.0956

Protanopia

209.1960, -0.5896, 2.4591

Deuteranopia

210.8280, -2.3802, 16.8138



Tritanopia

211.0000, 3.4510, 13.1550

Trichromacy



Original Color

210.2080, -2.0745, 12.0956

Protanomaly

209.6910, -1.3267, 5.5330

Deuteranomaly

210.8170, -2.3748, 15.0695

Tritanomaly

210.8320, 1.5618, 12.4253

Monochromacy



Original Color

210.2080, -2.0745, 12.0956

Achromatopsia

210.0000, 0.0000, 0.0000

Achromatomaly

210.2070, -0.5951, 4.2035

CSS Examples

Text

The CSS property to change the color of the text to YUV 210.2080, -2.0745, 12.0956 is called "color". The color property can be set on classes, ids or directly on the HTML element.

This example shows how text in the color `rgb(224, 204, 206)` looks like.

```
.text, #text, p{  
    color:rgb(224, 204, 206)  
}
```

If you want to add a text shadow in that color use the text-shadow property, you can generate a text shadow directly with our [CSS Text Shadow Generator](#).

Here you see how black text with a 4 pixel rgb(224, 204, 206) colored shadow looks like.

```
.shadow{ text-shadow: 4px 4px 2px rgb(224, 204, 206) }
```

Border

The CSS property to change the border of an element to YUV 210.2080, -2.0745, 12.0956 is called "border". The border property can be set on classes, ids or directly on the HTML element.

This example shows the color as border, it can be applied via the CSS property "border" or "border-color".

```
.border, #border, table{ border:4px solid rgb(224, 204, 206) }
```


If only the border color should be changed use the property `border-color`.

```
.border{ border-color:rgb(224, 204, 206) }
```

If you want to add a box shadow in that color use:

Here you see how a box with a 4 pixel `rgb(224, 204, 206)` colored shadow looks like.

```
.boxshadow{ -moz-box-shadow:4px 4px 4px  
4px rgb(224, 204, 206); -webkit-box-  
shadow:4px 4px 4px 4px rgb(224, 204, 206);  
box-shadow:4px 4px 4px 4px rgb(224, 204,  
206) }
```

Background

The CSS property to change the background color of an element to YUV 210.2080, -2.0745, 12.0956 is called "background". The background property can be set on classes, ids or directly on the HTML element.

```
.background, #background, body{  
background: rgb(224, 204, 206) }
```

If only the background color should be changed can be used:

```
.background{ background-color: rgb(224,  
204, 206) }
```

This example shows the color as background, it is applied via the CSS property "background".

To optimize and compress your CSS code, you can use our [online CSS compressor and optimizer](#) based on csstidy. If you want to create a linear or radial gradient as background or border, check our [CSS Gradient Generator](#).

Hey! You found this booklet interesting? Support Converting Colors with the new Membership Option!

The pro membership hides all ads, plus gives you double the colors in the color bucket, and more awesome pro features!

[Learn more, Memberships starting at \\$2.50/m!](#)

**Follow me
on Twitter!**

@ConvertingColor