

Converting Colors

YUV(210.4310, -3.6635, 8.3920)

Have a look what the booklet for
YUV(210.4310, -3.6635, 8.3920)
contains.

YUV(210.4310, -3.6635, 8.3920)	3
<i>Conversions</i>	4
<i>Details</i>	6
<i>Harmonies</i>	12
<i>Previews</i>	24
<i>Color Blindness Simulation</i>	28
<i>CSS Examples</i>	31

Color

**YUV(210.4310, -3.6635,
8.3920)**

Conversions

Conversions Part 1

Format	Color
Hex	DCCFCB
RGB	220, 207, 203
RGB Percent	86%, 81%, 80%
CMY	0.1373, 0.1882, 0.2039
CMYK	0.00, 0.06, 0.08, 0.14
HSL	14°, 20%, 83%
HSV	14°, 8%, 86%
XYZ	62.6075, 64.1531, 65.5829
YIQ	210.4310, 9.0320, 1.5120

Conversions

Conversions Part 2

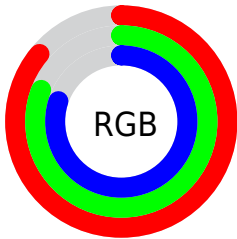
Format	Color
R _Y B	220, 208, 203
Decimal	14471115
CIE Lab	84.05, 3.81, 3.59
CIE LCh	84, 5.236, 43.256
Yxy	64.1531, 0.3255, 0.3335
Android (android.graphics.Color)	4292661195 (0xFFDCCFCB)
YUV	210.4310, -3.6635, 8.3920
Hunter-Lab	80.0956, -0.6411, 7.5198

Details

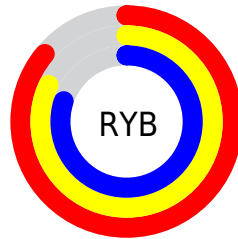
The YUV color $210.4310, -3.6635, 8.3920$ is a light color, and the websafe version is hex `CCCCCC`. A complement of this color would be $212.5690, 3.6635, -8.3920$, and the grayscale version is $210.0000, 0.0000, 0.0000$.

A 20% lighter version of the original color is $255.0000, 0.0000, 0.0000$, and $156.1320, -3.5161, 7.7772$ is the 20% darker color. If you saturate the color by 10%, you get $197.9440, -8.3534, 19.3431$, and if you desaturate by 10%, it is $222.9180, 1.0264, -2.5591$.

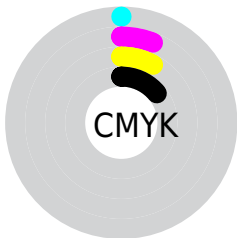
Distribution



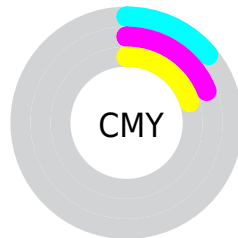
- Red (86%)
- Green (81%)
- Blue (80%)



- Red (86%)
- Yellow (82%)
- Blue (80%)



- Cyan (0%)
- Magenta (6%)
- Yellow (8%)
- Black (14%)



- Cyan (14%)
- Magenta (19%)
- Yellow (20%)

Brightness & Saturation Gradients

These gradients show how the YUV color 210.4310, -3.6635, 8.3920 changes by changing the brightness by 10 percent. The first figure shows a shift by +10% for each color and the second figure -10%.

Similar to the brightness gradients but the following saturation gradients show a change of the YUV color 210.4310, -3.6635, 8.3920 by changing the saturation by 10% instead.

■ 210.4310, -3.6635,
8.3920

■ 210.4310, -3.6635,
8.3920

255.0000, 0.0000,
0.0000

■ 182.5450, -3.2267,
8.2920

■ 156.1320, -3.5161,
7.7772

■ 130.1320, -3.5161,
7.7772

■ 104.8330, -3.3687,
7.1625

■ 80.9470, -2.9319,
7.0625

■ 57.6480, -2.7845,
6.4477

■ 36.3490, -2.6371,

5.8329

■ 14.0180, -3.9529,
7.8772

■ 0.0000, 0.0000,
0.0000

■ 210.4310, -3.6635,
8.3920

■ 210.4310, -3.6635,
8.3920

■ 197.9440, -8.3534,
19.3431

■ 222.9180, 1.0264,
-2.5591

■ 185.4570,
-13.0433, 30.2942

■ 235.4050, 5.7163,
-13.5102

■ 173.5570,
-18.0226, 40.7305

■ 244.5350, 5.1592,
-21.5172

■ 161.0700,
-22.7125, 51.6816

■ 148.5830,
-27.4024, 62.6327

■ 136.0960,
-32.0923, 73.5838

■ 123.6090,
-36.7822, 84.5349

■ 111.1220,
-41.4721, 95.4860

■ 99.2220, -46.4514,
105.9223

Harmonies

Analogous

The Analogous color harmony consists of three colors that are next to each other on the color wheel.



210.5990, -1.7743, 9.1217



210.4310, -3.6635, 8.3920



209.7790, -4.8210, 6.3328

Triad

The Triadic color harmony groups three colors that are evenly spaced from another and form a triangle on the color wheel.



210.4310, -3.6635, 8.3920



208.1410, -0.5625, -6.2627



209.5420, 4.6628, -2.2293

Complementary

The Complementary color scheme is a pair of colors which are on the opposite of each other on the color wheel.



210.4310, -3.6635, 8.3920



212.5690, 3.6635, -8.3920

Split Complementary

Split-complementary colors differ from the complementary color scheme. The scheme consists of three colors, the original color and two neighbors of the complement color.



209.2210, 4.8210, -6.3328



210.4310, -3.6635, 8.3920



208.4010, 1.7743, -9.1217

Square

The Square scheme is like the rectangle color scheme, but the four colors are evenly spaced on the color wheel.



210.4310, -3.6635, 8.3920



208.4790, -3.1941, -2.1741



208.2700, 3.8109, -9.0068



210.5210, 3.1941, 2.1741

Rectangle

The Rectangle color scheme consists of four colors that form a rectangle on the color wheel.



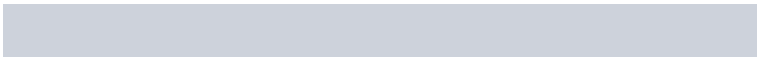
210.4310, -3.6635, 8.3920



209.1700, -4.5208, 3.3589



208.2700, 3.8109, -9.0068



209.5310, 4.6682, -3.9737

Sweetspot

The Sweet Spot groups the original color and five complimentary colors.



210.4310, -3.6635, 8.3920



252.0820, -1.0264, 2.5591



209.5650, 3.1725, 9.1515



126.4840, -0.7316, 1.3295



0.0000, 0.0000, 0.0000



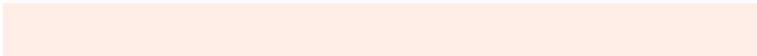
128.0000, 0.0000, 0.0000

Same Dimension

The Same Dimension uses a secret algorithm to generate beautiful new colors.



210.4310, -3.6635, 8.3920



241.8120, -4.8373, 11.5659



215.1270, -5.9786, 4.2736



103.4630, -2.2003, 5.7329



75.7940, -37.3664, 85.2497



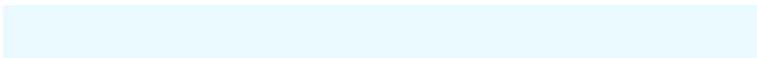
20.2110, -9.9640, 22.6170

Inverse Universe

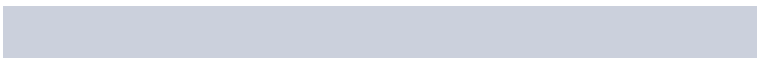
The Inverse Universe completely reimagines the original color for something new.



212.5690, 3.6635, -8.3920



245.1880, 4.8373, -11.5659



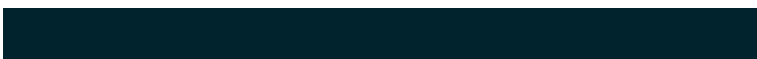
207.8730, 5.9786, -4.2736



104.9500, 2.4896, -5.2182



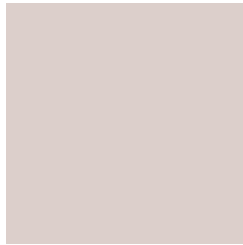
97.7930, 37.0771, -85.7645



25.7890, 9.9640, -22.6170

Previews

White Background



This preview shows how the YUV color 210.4310, -3.6635, 8.3920 looks on a white background.

Color Contrast Check

Large Text (above 18pt) WCAG AA × Fail

Any Text WCAG AA × Fail

Large Text (above 18pt) WCAG AAA × Fail

Any Text WCAG AAA × Fail

Black Background



This preview shows how the YUV color 210.4310, -3.6635, 8.3920 looks on a black background.

Color Contrast Check

Large Text (above 18pt) WCAG AA ✓ Pass

Any Text WCAG AA ✓ Pass

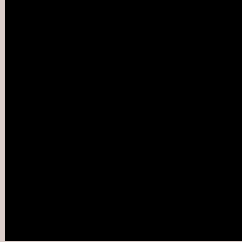
Large Text (above 18pt) WCAG AAA ✓ Pass

Any Text WCAG AAA ✓ Pass

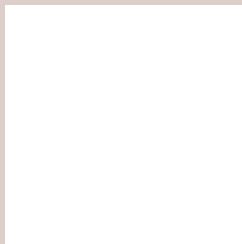
If you want to check with other color combinations, try the [Color Contrast Checker](#).

YUV 210.4310, -3.6635, 8.3920

Background



This preview shows how black text looks on a background with the YUV color 210.4310, -3.6635, 8.3920.



This preview shows how white text looks on a background with the YUV color 210.4310, -3.6635,

8.3920.

Color Blindness Simulation

Color vision deficiency is a very complex topic, and I could not describe the different causes any better than Wikipedia does, so if you want to learn more, you should check out their [article about color blindness](#).

Dichromacy



Original Color

210.4310, -3.6635, 8.3920

Protanopia

210.2240, -3.0684, 4.1886

Deuteranopia

211.7850, -3.8380, 17.7286



Tritanopia

211.2060, 4.3354, 9.4663

Trichromacy



Original Color

210.4310, -3.6635, 8.3920

Protanomaly

210.2350, -3.0739, 5.9329

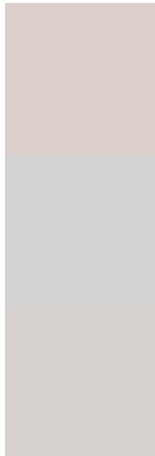
Deuteranomaly

211.1760, -3.5378, 14.7546

Tritanomaly

210.8100, 1.5727, 8.9366

Monochromacy



Original Color

210.4310, -3.6635, 8.3920

Achromatopsia

210.0000, 0.0000, 0.0000

Achromatomaly

210.2670, -1.6106, 3.2738

CSS Examples

Text

The CSS property to change the color of the text to YUV 210.4310, -3.6635, 8.3920 is called "color". The color property can be set on classes, ids or directly on the HTML element.

This example shows how text in the color `rgb(220, 207, 203)` looks like.

```
.text, #text, p{  
    color:rgb(220, 207, 203)  
}
```

If you want to add a text shadow in that color use the text-shadow property, you can generate a text shadow directly with our [CSS Text Shadow Generator](#).

Here you see how black text with a 4 pixel rgb(220, 207, 203) colored shadow looks like.

```
.shadow{ text-shadow: 4px 4px 2px rgb(220, 207, 203) }
```

Border

The CSS property to change the border of an element to YUV 210.4310, -3.6635, 8.3920 is called "border". The border property can be set on classes, ids or directly on the HTML element.

This example shows the color as border, it can be applied via the CSS property "border" or "border-color".

```
.border, #border, table{ border:4px solid rgb(220, 207, 203) }
```


If only the border color should be changed use the property `border-color`.

```
.border{ border-color:rgb(220, 207, 203) }
```

If you want to add a box shadow in that color use:

Here you see how a box with a 4 pixel `rgb(220, 207, 203)` colored shadow looks like.

```
.boxshadow{ -moz-box-shadow:4px 4px 4px  
4px rgb(220, 207, 203); -webkit-box-  
shadow:4px 4px 4px 4px rgb(220, 207, 203);  
box-shadow:4px 4px 4px 4px rgb(220, 207,  
203) }
```

Background

The CSS property to change the background color of an element to YUV 210.4310, -3.6635, 8.3920 is called "background". The background property can be set on classes, ids or directly on the HTML element.

```
.background, #background, body{  
background: rgb(220, 207, 203) }
```

If only the background color should be changed can be used:

```
.background{ background-color: rgb(220,  
207, 203) }
```

This example shows the color as background, it is applied via the CSS property "background".

To optimize and compress your CSS code, you can use our [online CSS compressor and optimizer](#) based on csstidy. If you want to create a linear or radial gradient as background or border, check our [CSS Gradient Generator](#).

Hey! You found this booklet interesting? Support Converting Colors with the new Membership Option!

The pro membership hides all ads, plus gives you double the colors in the color bucket, and more awesome pro features!

[Learn more, Memberships starting at \\$2.50/m!](#)

**Follow me
on Twitter!**

@ConvertingColor