

# Converting Colors

YUV(210.6640, -13.6384,  
34.4977)

Have a look what the booklet for  
YUV(210.6640, -13.6384, 34.4977)  
contains.

<b>YUV(210.6640, -13.6384, 34.4977)</b> .....	3
<b><i>Conversions</i></b> .....	4
<b><i>Details</i></b> .....	6
<b><i>Harmonies</i></b> .....	12
<b><i>Previews</i></b> .....	24
<b><i>Color Blindness Simulation</i></b> .....	28
<b><i>CSS Examples</i></b> .....	31

# Color

**YUV(210.6640, -13.6384,  
34.4977)**

# Conversions

## Conversions Part 1

Format	Color
Hex	FAC4B7
RGB	250, 196, 183
RGB Percent	98%, 77%, 72%
CMY	0.0196, 0.2314, 0.2824
CMYK	0.00, 0.22, 0.27, 0.02
HSL	12°, 87%, 85%
HSV	12°, 27%, 98%
XYZ	67.7115, 63.2227, 53.4342
YIQ	210.6640, 36.3570, 7.4050

# Conversions

## Conversions Part 2

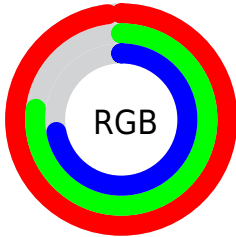
Format	Color
R <sub>Y</sub> B	250, 199, 183
Decimal	16434359
CIE Lab	83.56, 17.42, 13.90
CIE LCh	84, 22.288, 38.582
Yxy	63.2227, 0.3673, 0.3429
Android (android.graphics.Color)	4294624439 (0xFFFA4B7)
YUV	210.6640, -13.6384, 34.4977
Hunter-Lab	79.5127, 12.8599, 15.8148

# Details

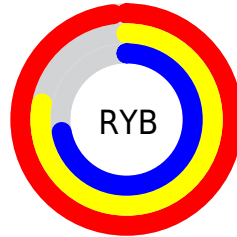
The YUV color  $210.6640, -13.6384, 34.4977$  is a light color, and the websafe version is hex  $\text{FFCCCC}$ . A complement of this color would be  $222.3360, 13.6384, -34.4977$ , and the grayscale version is  $211.0000, 0.0000, 0.0000$ .

A 20% lighter version of the original color is  $252.0020, -6.4100, 2.6292$ , and  $155.5820, -12.6119, 31.9386$  is the 20% darker color. If you saturate the color by 10%, you get  $196.0740, -18.7705, 47.2931$ , and if you desaturate by 10%, it is  $225.2540, -8.5062, 21.7022$ .

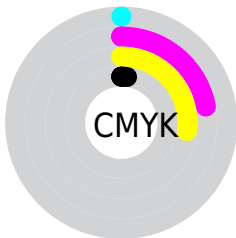
# Distribution



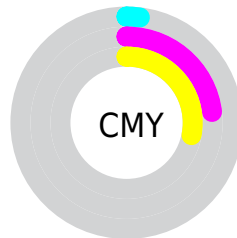
- Red (98%)
- Green (77%)
- Blue (72%)



- Red (98%)
- Yellow (78%)
- Blue (72%)



- Cyan (0%)
- Magenta (22%)
- Yellow (27%)
- Black (2%)



- Cyan (2%)
- Magenta (23%)
- Yellow (28%)

# Brightness & Saturation Gradients

These gradients show how the YUV color 210.6640, -13.6384, 34.4977 changes by changing the brightness by 10 percent. The first figure shows a shift by +10% for each color and the second figure -10%.

Similar to the brightness gradients but the following saturation gradients show a change of the YUV color 210.6640, -13.6384, 34.4977 by changing the saturation by 10% instead.



210.6640,  
-13.6384, 34.4977

210.6640,  
-13.6384, 34.4977

255.0000, 0.0000,  
0.0000

183.0660,  
-13.3435, 33.2681

252.0020, -6.4100,  
2.6292

155.5820,  
-12.6119, 31.9386

129.3970,  
-12.0277, 31.2238

104.2010,  
-11.4381, 28.7647

79.7170, -10.7065,  
27.4352

55.9340, -9.8275,  
25.4909

34.0370, -9.3852,

23.6466

■ 11.6610, -5.7489,  
23.9763

■ 0.0000, 0.0000,  
0.0000

■ 210.6640,  
-13.6384, 34.4977

■ 210.6640,  
-13.6384, 34.4977

■ 196.0740,  
-18.7705, 47.2931

■ 225.2540, -8.5062,  
21.7022

■ 181.4840,  
-23.9026, 60.0885

■ 239.8440, -3.3741,  
8.9068

■ 166.8940,  
-29.0347, 72.8840

■ 253.5050, 0.7370,  
-3.0739

■ 151.7170,  
-33.8775, 86.1942

■ 137.1270,  
-39.0096, 98.9896

■ 122.5370,  
-44.1417, 111.7851

■ 107.9470,  
-49.2739, 124.5805

■ 103.5130,  
-51.0319, 128.4691

# Harmonies

## Analogous

The Analogous color harmony consists of three colors that are next to each other on the color wheel.



211.4820, -4.1816, 34.6573



210.6640, -13.6384, 34.4977



209.1160, -19.2842, 25.3313

# Triad

The Triadic color harmony groups three colors that are evenly spaced from another and form a triangle on the color wheel.



210.6640, -13.6384, 34.4977



201.5700, -4.7180, -26.8099



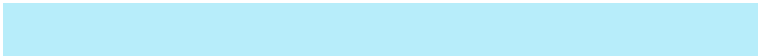
207.8900, 20.2672, -13.9355

# Complementary

The Complementary color scheme is a pair of colors which are on the opposite of each other on the color wheel.



210.6640, -13.6384, 34.4977



222.3360, 13.6384, -34.4977

# Split Complementary

Split-complementary colors differ from the complementary color scheme. The scheme consists of three colors, the original color and two neighbors of the complement color.



203.9970, 21.2005, -33.3234



210.6640, -13.6384, 34.4977



199.8810, 6.9607, -39.3606

# Square

The Square scheme is like the rectangle color scheme, but the four colors are evenly spaced on the color wheel.



210.6640, -13.6384, 34.4977



204.4600, -14.5238, -8.2964



200.6770, 16.4282, -42.6897



211.2410, 14.6712, 7.6816



# Rectangle

The Rectangle color scheme consists of four colors that form a rectangle on the color wheel.



210.6640, -13.6384, 34.4977



207.5340, -19.9833, 16.1947



200.6770, 16.4282, -42.6897



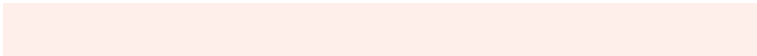
206.4870, 21.4519, -20.5981

# Sweetspot

The Sweet Spot groups the original color and five complimentary colors.



210.6640, -13.6384, 34.4977



243.3280, -4.1057, 10.2363



209.3030, 14.1476, 35.6913



120.0610, -2.4951, 6.9625



0.0000, 0.0000, 0.0000



128.0000, 0.0000, 0.0000



# Same Dimension

The Same Dimension uses a secret algorithm to generate beautiful new colors.



210.6640, -13.6384, 34.4977



206.9100, -16.7176, 42.1749



230.0350, -23.1883, 17.5093



117.6480, -2.7845, 6.4477



78.2300, -38.5674, 97.1453



25.2830, -12.4645, 31.3238

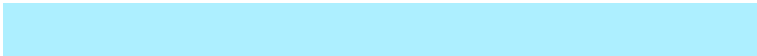


# Inverse Universe

The Inverse Universe completely reimagines the original color for something new.



222.3360, 13.6384, -34.4977



221.0900, 16.7176, -42.1749



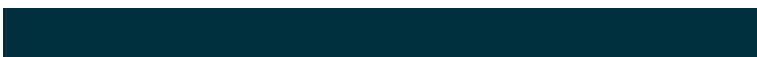
202.9650, 23.1883, -17.5093



119.9390, 2.4951, -6.9625



110.7700, 38.5674, -97.1453



35.7170, 12.4645, -31.3238



# Previews

## White Background



This preview shows how the YUV color 210.6640, -13.6384, 34.4977 looks on a white background.

## Color Contrast Check

Large Text (above 18pt) WCAG AA × Fail

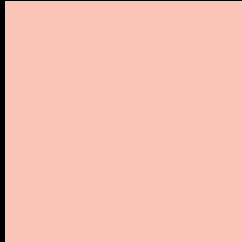
Any Text WCAG AA × Fail

Large Text (above 18pt) WCAG AAA × Fail

Any Text WCAG AAA × Fail



# Black Background



This preview shows how the YUV color 210.6640, -13.6384, 34.4977 looks on a black background.

## Color Contrast Check

Large Text (above 18pt) WCAG AA ✓ Pass

Any Text WCAG AA ✓ Pass

Large Text (above 18pt) WCAG AAA ✓ Pass

Any Text WCAG AAA ✓ Pass

If you want to check with other color combinations, try the [Color Contrast Checker](#).

# YUV 210.6640, -13.6384, 34.4977

## Background



This preview shows how black text looks on a background with the YUV color 210.6640, -13.6384, 34.4977.



This preview shows how white text looks on a background with the YUV color 210.6640, -13.6384,

34.4977.

# Color Blindness Simulation

Color vision deficiency is a very complex topic, and I could not describe the different causes any better than Wikipedia does, so if you want to learn more, you should check out their [article about color blindness](#).

## Dichromacy



### Original Color

210.6640, -13.6384, 34.4977

### Protanopia

208.5250, -9.6258, 7.4326

### Deuteranopia

209.8970, -13.7532, 24.6463



## Tritanopia

211.9490, -2.4399, 36.0017

# Trichromacy



## Original Color

210.6640, -13.6384, 34.4977

## Protanomaly

209.5370, -11.1107, 17.0691

## Deuteranomaly

209.9190, -13.7641, 28.1350

## Tritanomaly

211.2110, -6.5130, 35.7720

# Monochromacy



## Original Color

210.6640, -13.6384, 34.4977

## Achromatopsia

211.0000, 0.0000, 0.0000

## Achromatomaly

211.1110, -4.9847, 12.1807

# CSS Examples

## Text

The CSS property to change the color of the text to YUV 210.6640, -13.6384, 34.4977 is called "color". The color property can be set on classes, ids or directly on the HTML element.

This example shows how text in the color `rgb(250, 196, 183)` looks like.

```
.text, #text, p{  
    color:rgb(250, 196, 183)  
}
```

If you want to add a text shadow in that color use the text-shadow property, you can generate a text shadow directly with our [CSS Text Shadow Generator](#).

Here you see how black text with a 4 pixel rgb(250, 196, 183) colored shadow looks like.

```
.shadow{ text-shadow: 4px 4px 2px rgb(250, 196, 183) }
```

## Border

The CSS property to change the border of an element to YUV 210.6640, -13.6384, 34.4977 is called "border".

The border property can be set on classes, ids or directly on the HTML element.

This example shows the color as border, it can be applied via the CSS property "border" or "border-color".

```
.border, #border, table{ border:4px solid rgb(250, 196, 183) }
```



If only the border color should be changed use the property `border-color`.

```
.border{ border-color:rgb(250, 196, 183) }
```

If you want to add a box shadow in that color use:

Here you see how a box with a 4 pixel `rgb(250, 196, 183)` colored shadow looks like.

```
.boxshadow{ -moz-box-shadow:4px 4px 4px  
4px rgb(250, 196, 183); -webkit-box-  
shadow:4px 4px 4px 4px rgb(250, 196, 183);  
box-shadow:4px 4px 4px 4px rgb(250, 196,  
183) }
```

# Background

The CSS property to change the background color of an element to YUV 210.6640, -13.6384, 34.4977 is called "background". The background property can be set on classes, ids or directly on the HTML element.

```
.background, #background, body{  
background: rgb(250, 196, 183) }
```

If only the background color should be changed can be used:

```
.background{ background-color: rgb(250,  
196, 183) }
```

This example shows the color as background, it is applied via the CSS property "background".

To optimize and compress your CSS code, you can use our [online CSS compressor and optimizer](#) based on csstidy. If you want to create a linear or radial gradient as background or border, check our [CSS Gradient Generator](#).

Hey! You found this booklet interesting? Support Converting Colors with the new Membership Option!

The pro membership hides all ads, plus gives you double the colors in the color bucket, and more awesome pro features!

**[Learn more, Memberships starting at \\$2.50/m!](#)**

**Follow me  
on Twitter!**

@ConvertingColor