

Converting Colors

YUV(210.7110, -11.6895,
16.0395)

Have a look what the booklet for
YUV(210.7110, -11.6895, 16.0395)
contains.

YUV(210.7110, -11.6895, 16.0395)	3
<i>Conversions</i>	4
<i>Details</i>	6
<i>Harmonies</i>	12
<i>Previews</i>	24
<i>Color Blindness Simulation</i>	28
<i>CSS Examples</i>	31

Color

**YUV(210.7110, -11.6895,
16.0395)**

Conversions

Conversions Part 1

Format	Color
Hex	E5CEBB
RGB	229, 206, 187
RGB Percent	90%, 81%, 73%
CMY	0.1020, 0.1922, 0.2667
CMYK	0.00, 0.10, 0.18, 0.10
HSL	27°, 45%, 82%
HSV	27°, 18%, 90%
XYZ	63.3540, 64.3885, 56.1028
YIQ	210.7110, 19.8070, -1.0330

Conversions

Conversions Part 2

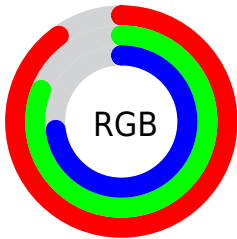
Format	Color
R _Y B	229, 222, 187
Decimal	15060667
CIE Lab	84.17, 5.01, 12.36
CIE LCh	84, 13.340, 67.947
Yxy	64.3885, 0.3446, 0.3502
Android (android.graphics.Color)	4293250747 (0xFFE5CEBB)
YUV	210.7110, -11.6895, 16.0395
Hunter-Lab	80.2424, 0.5074, 14.7161

Details

The YUV color $210.7110, -11.6895, 16.0395$ is a light color, and the websafe version is hex `CCCCCC`. A complement of this color would be $205.2890, 11.6895, -16.0395$, and the grayscale version is $211.0000, 0.0000, 0.0000$.

A 20% lighter version of the original color is $253.6320, -5.2416, 1.1997$, and $156.2270, -10.9579, 14.7099$ is the 20% darker color. If you saturate the color by 10%, you get $200.4580, -17.9738, 25.0313$, and if you desaturate by 10%, it is $220.9640, -5.4053, 7.0476$.

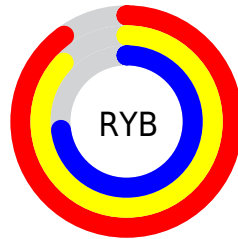
Distribution



Red (90%)

Green (81%)

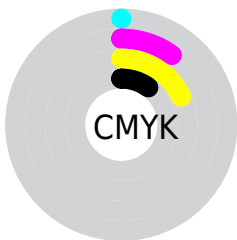
Blue (73%)



Red (90%)

Yellow (87%)

Blue (73%)

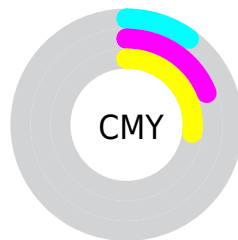


Cyan (0%)

Magenta (10%)

Yellow (18%)

Black (10%)



Cyan (10%)


Magenta (19%)


Yellow (27%)

Brightness & Saturation Gradients


These gradients show how the YUV color 210.7110, -11.6895, 16.0395 changes by changing the brightness by 10 percent. The first figure shows a shift by +10% for each color and the second figure -10%.


Similar to the brightness gradients but the following saturation gradients show a change of the YUV color 210.7110, -11.6895, 16.0395 by changing the saturation by 10% instead.


 210.7110,
-11.6895, 16.0395


 210.7110,
-11.6895, 16.0395


255.0000, 0.0000,
0.0000

 183.4120,
-11.5421, 15.4247


 253.6320, -5.2416,
1.1997

 156.2270,
-10.9579, 14.7099

 130.0420,
-10.3737, 13.9952

 104.7430,
-10.2263, 13.3804

 80.5580, -9.6421,
12.6656

 57.3730, -9.0579,
11.9509

 35.8890, -8.3263,

10.6213

■ 14.5300, -7.1633,
10.9362

■ 0.0000, 0.0000,
0.0000

■ 210.7110,
-11.6895, 16.0395

■ 210.7110,
-11.6895, 16.0395

■ 200.4580,
-17.9738, 25.0313

■ 220.9640, -5.4053,
7.0476

■ 190.7920,
-24.5475, 33.5084

■ 230.6300, 1.1684,
-1.4295

■ 180.5390,
-30.8317, 42.5003

■ 240.7690, 7.0159,
-10.3214

■ 170.8730,
-37.4054, 50.9774

■ 247.2260, 3.8326,
-15.9842

■ 160.6200,
-43.6897, 59.9693

■ 151.0680,
-49.8265, 68.3464

■ 140.8150,
-56.1108, 77.3382

■ 131.1490,
-62.6845, 85.8153

■ 129.5190,
-63.8529, 87.2448

Harmonies

Analogous

The Analogous color harmony consists of three colors that are next to each other on the color wheel.



211.9550, -8.3588, 21.0875



210.7110, -11.6895, 16.0395



209.2430, -11.9518, 6.8029

Triad

The Triadic color harmony groups three colors that are evenly spaced from another and form a triangle on the color wheel.



210.7110, -11.6895, 16.0395



206.0680, 3.4175, -22.8616



212.0250, 8.8617, 4.3631

Complementary

The Complementary color scheme is a pair of colors which are on the opposite of each other on the color wheel.



210.7110, -11.6895, 16.0395



205.2890, 11.6895, -16.0395

Split Complementary

Split-complementary colors differ from the complementary color scheme. The scheme consists of three colors, the original color and two neighbors of the complement color.



210.1590, 12.2466, -8.0324



210.7110, -11.6895, 16.0395



206.5500, 9.0959, -24.1613

Square

The Square scheme is like the rectangle color scheme, but the four colors are evenly spaced on the color wheel.



210.7110, -11.6895, 16.0395



206.6900, -3.2982, -15.5141



208.0930, 12.2792, -18.4986



213.0110, 3.4456, 14.8994

Rectangle

The Rectangle color scheme consists of four colors that form a rectangle on the color wheel.



210.7110, -11.6895, 16.0395



208.3560, -10.0355, -1.1892



208.0930, 12.2792, -18.4986



211.0460, 10.3303, -0.0403

Sweetspot

The Sweet Spot groups the original color and five complimentary colors.



210.7110, -11.6895, 16.0395



248.5940, -4.2368, 5.6181



202.1800, 3.8553, 23.5211



124.0390, -2.4842, 3.4738



0.0000, 0.0000, 0.0000



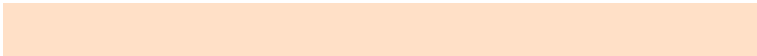
128.0000, 0.0000, 0.0000

Same Dimension

The Same Dimension uses a secret algorithm to generate beautiful new colors.



210.7110, -11.6895, 16.0395



230.4190, -15.4896, 21.5575



223.0380, -17.7667, 5.2287



109.5230, -3.2158, 4.8033



101.0680, -49.8265, 68.3464



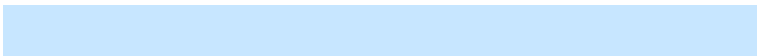
28.7500, -14.1738, 19.5132

Inverse Universe

The Inverse Universe completely reimagines the original color for something new.



205.2890, 11.6895, -16.0395



223.5810, 15.4896, -21.5575



192.9620, 17.7667, -5.2287



108.4770, 3.2158, -4.8033



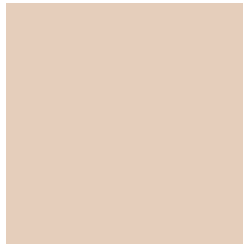
77.9320, 49.8265, -68.3464



22.2500, 14.1738, -19.5132

Previews

White Background



This preview shows how the YUV color 210.7110, -11.6895, 16.0395 looks on a white background.

Color Contrast Check

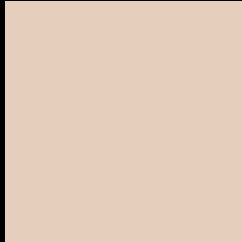
Large Text (above 18pt) WCAG AA × Fail

Any Text WCAG AA × Fail

Large Text (above 18pt) WCAG AAA × Fail

Any Text WCAG AAA × Fail

Black Background



This preview shows how the YUV color 210.7110, -11.6895, 16.0395 looks on a black background.

Color Contrast Check

Large Text (above 18pt) WCAG AA ✓ Pass

Any Text WCAG AA ✓ Pass

Large Text (above 18pt) WCAG AAA ✓ Pass

Any Text WCAG AAA ✓ Pass

If you want to check with other color combinations, try the [Color Contrast Checker](#).

YUV 210.7110, -11.6895, 16.0395

Background



This preview shows how black text looks on a background with the YUV color 210.7110, -11.6895, 16.0395.



This preview shows how white text looks on a background with the YUV color 210.7110, -11.6895, 16.0395.

Color Blindness Simulation

Color vision deficiency is a very complex topic, and I could not describe the different causes any better than Wikipedia does, so if you want to learn more, you should check out their [article about color blindness](#).

Dichromacy



Original Color

210.7110, -11.6895, 16.0395

Protanopia

209.7100, -10.2100, 8.1473

Deuteranopia

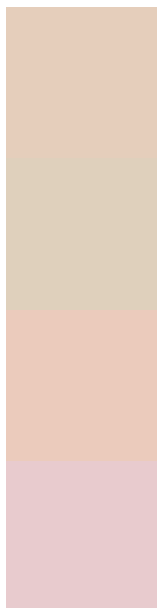
211.1680, -11.4218, 23.5317



Tritanopia

212.9790, 1.9824, 17.5584

Trichromacy



Original Color

210.7110, -11.6895, 16.0395

Protanomaly

210.2050, -10.9471, 11.2212

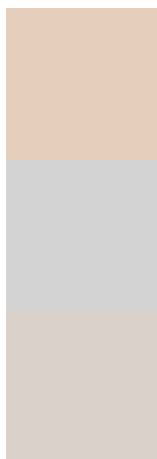
Deuteranomaly

210.8580, -11.2690, 21.1725

Tritanomaly

212.0130, -2.9644, 17.5286

Monochromacy



Original Color

210.7110, -11.6895, 16.0395

Achromatopsia

211.0000, 0.0000, 0.0000

Achromatomaly

210.8930, -4.3842, 6.2328

CSS Examples

Text

The CSS property to change the color of the text to YUV 210.7110, -11.6895, 16.0395 is called "color". The color property can be set on classes, ids or directly on the HTML element.

This example shows how text in the color `rgb(229, 206, 187)` looks like.

```
.text, #text, p{  
    color:rgb(229, 206, 187)  
}
```

If you want to add a text shadow in that color use the text-shadow property, you can generate a text shadow directly with our [CSS Text Shadow Generator](#).

Here you see how black text with a 4 pixel rgb(229, 206, 187) colored shadow looks like.

```
.shadow{ text-shadow: 4px 4px 2px rgb(229, 206, 187) }
```

Border

The CSS property to change the border of an element to YUV 210.7110, -11.6895, 16.0395 is called "border".

The border property can be set on classes, ids or directly on the HTML element.

This example shows the color as border, it can be applied via the CSS property "border" or "border-color".

```
.border, #border, table{ border:4px solid rgb(229, 206, 187) }
```


If only the border color should be changed use the property border-color.

```
.border{ border-color:rgb(229, 206, 187) }
```

If you want to add a box shadow in that color use:

Here you see how a box with a 4 pixel rgb(229, 206, 187) colored shadow looks like.

```
.boxshadow{ -moz-box-shadow:4px 4px 4px  
4px rgb(229, 206, 187); -webkit-box-  
shadow:4px 4px 4px 4px rgb(229, 206, 187);  
box-shadow:4px 4px 4px 4px rgb(229, 206,  
187) }
```

Background

The CSS property to change the background color of an element to YUV 210.7110, -11.6895, 16.0395 is called "background". The background property can be set on classes, ids or directly on the HTML element.

```
.background, #background, body{  
background: rgb(229, 206, 187) }
```

If only the background color should be changed can be used:

```
.background{ background-color: rgb(229,  
206, 187) }
```

This example shows the color as background, it is applied via the CSS property "background".

To optimize and compress your CSS code, you can use our [online CSS compressor and optimizer](#) based on csstidy. If you want to create a linear or radial gradient as background or border, check our [CSS Gradient Generator](#).

Hey! You found this booklet interesting? Support Converting Colors with the new Membership Option!

The pro membership hides all ads, plus gives you double the colors in the color bucket, and more awesome pro features!

[Learn more, Memberships starting at \\$2.50/m!](#)

**Follow me
on Twitter!**

@ConvertingColor