

Converting Colors

YUV(210.9280, -10.8105,
14.0951)

Have a look what the booklet for
YUV(210.9280, -10.8105, 14.0951)
contains.

YUV(210.9280, -10.8105, 14.0951)	3
<i>Conversions</i>	4
<i>Details</i>	6
<i>Harmonies</i>	12
<i>Previews</i>	24
<i>Color Blindness Simulation</i>	28
<i>CSS Examples</i>	31

Color

**YUV(210.9280, -10.8105,
14.0951)**

Conversions

Conversions Part 1

Format	Color
Hex	E3CFBD
RGB	227, 207, 189
RGB Percent	89%, 81%, 74%
CMY	0.1098, 0.1882, 0.2588
CMYK	0.00, 0.09, 0.17, 0.11
HSL	28°, 40%, 82%
HSV	28°, 17%, 89%
XYZ	63.1767, 64.6307, 57.2893
YIQ	210.9280, 17.6980, -1.3580

Conversions

Conversions Part 2

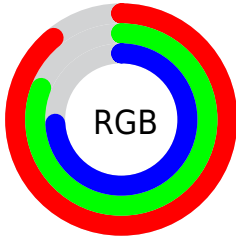
Format	Color
R _Y B	227, 223, 189
Decimal	14929853
CIE Lab	84.29, 4.06, 11.46
CIE LCh	84, 12.156, 70.488
Yxy	64.6307, 0.3413, 0.3492
Android (android.graphics.Color)	4293119933 (0xFFE3CFBD)
YUV	210.9280, -10.8105, 14.0951
Hunter-Lab	80.3932, -0.4146, 14.0244

Details

The YUV color $210.9280, -10.8105, 14.0951$ is a light color, and the websafe version is hex `CCCCCC`. A complement of this color would be $205.0720, 10.8105, -14.0951$, and the grayscale version is $211.0000, 0.0000, 0.0000$.

A 20% lighter version of the original color is $253.8600, -4.3680, 0.9998$, and $156.4440, -10.0789, 12.7656$ is the 20% darker color. If you saturate the color by 10%, you get $201.2620, -17.3842, 22.5722$, and if you desaturate by 10%, it is $220.5940, -4.2368, 5.6181$.

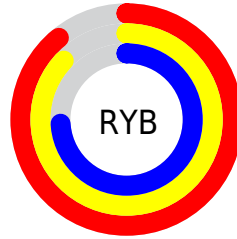
Distribution



Red (89%)

Green (81%)

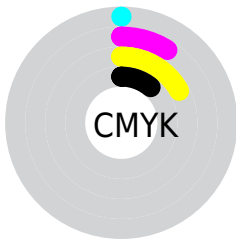
Blue (74%)



Red (89%)

Yellow (87%)

Blue (74%)

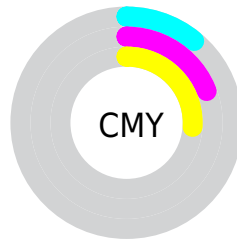


Cyan (0%)

Magenta (9%)

Yellow (17%)

Black (11%)



Cyan (11%)

Magenta (19%)

Yellow (26%)

Brightness & Saturation Gradients

These gradients show how the YUV color 210.9280, -10.8105, 14.0951 changes by changing the brightness by 10 percent. The first figure shows a shift by +10% for each color and the second figure -10%.

Similar to the brightness gradients but the following saturation gradients show a change of the YUV color 210.9280, -10.8105, 14.0951 by changing the saturation by 10% instead.

■ 210.9280,
-10.8105, 14.0951

■ 210.9280,
-10.8105, 14.0951

255.0000, 0.0000,
0.0000

■ 183.0420,
-10.3737, 13.9952

■ 253.8600, -4.3680,
0.9998

■ 156.4440,
-10.0789, 12.7656

■ 130.4440,
-10.0789, 12.7656

■ 105.2590, -9.4947,
12.0509

■ 81.0740, -8.9105,
11.3361

■ 57.8890, -8.3263,
10.6213

■ 36.2910, -8.0315,

9.3918

■ 14.8180, -7.3053,
9.8066

■ 0.0000, 0.0000,
0.0000

■ 210.9280,
-10.8105, 14.0951

■ 210.9280,
-10.8105, 14.0951

■ 201.2620,
-17.3842, 22.5722

■ 220.5940, -4.2368,
5.6181

■ 191.7100,
-23.5210, 30.9493

■ 230.1460, 1.9000,
-2.7590

■ 182.0440,
-30.0947, 39.4264

■ 239.5840, 7.6001,
-11.0362

■ 172.3780,
-36.6684, 47.9035

■ 246.6280, 4.1274,
-17.2138

■ 162.8260,
-42.8052, 56.2806

■ 153.1600,
-49.3789, 64.7577

■ 143.4940,
-55.9525, 73.2348

■ 133.8280,
-62.5262, 81.7118

■ 131.2690,
-64.7156, 83.9561

Harmonies

Analogous

The Analogous color harmony consists of three colors that are next to each other on the color wheel.



212.0580, -7.9166, 19.2431



210.9280, -10.8105, 14.0951



209.8730, -10.7834, 5.3734

Triad

The Triadic color harmony groups three colors that are evenly spaced from another and form a triangle on the color wheel.



210.9280, -10.8105, 14.0951



206.4920, 3.7014, -20.6025



212.0960, 7.8407, 5.1778

Complementary

The Complementary color scheme is a pair of colors which are on the opposite of each other on the color wheel.



210.9280, -10.8105, 14.0951



205.0720, 10.8105, -14.0951

Split Complementary

Split-complementary colors differ from the complementary color scheme. The scheme consists of three colors, the original color and two neighbors of the complement color.



210.5290, 11.0782, -6.6029



210.9280, -10.8105, 14.0951



207.1590, 8.7956, -21.1874

Square

The Square scheme is like the rectangle color scheme, but the four colors are evenly spaced on the color wheel.



210.9280, -10.8105, 14.0951



207.2170, -2.5720, -15.0993



208.8760, 11.4001, -16.5543



212.4840, 2.7194, 14.4845

Rectangle

The Rectangle color scheme consists of four colors that form a rectangle on the color wheel.



210.9280, -10.8105, 14.0951



208.5840, -9.1619, -1.3892



208.8760, 11.4001, -16.5543



211.4160, 9.1619, 1.3892

Sweetspot

The Sweet Spot groups the original color and five complimentary colors.



210.9280, -10.8105, 14.0951



249.4090, -3.6526, 4.9033



202.6420, 3.1345, 21.3620



124.1530, -2.0474, 3.3738



0.0000, 0.0000, 0.0000



128.0000, 0.0000, 0.0000

Same Dimension

The Same Dimension uses a secret algorithm to generate beautiful new colors.



210.9280, -10.8105, 14.0951



233.3370, -14.4631, 18.9985



222.0810, -16.3089, 4.3140



110.1100, -3.5052, 4.2885



103.4160, -50.9841, 66.2872



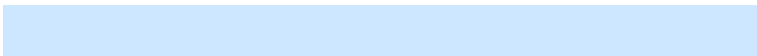
29.3370, -14.4631, 18.9985

Inverse Universe

The Inverse Universe completely reimagines the original color for something new.



205.0720, 10.8105, -14.0951



225.6630, 14.4631, -18.9985



193.9190, 16.3089, -4.3140



107.8900, 3.5052, -4.2885



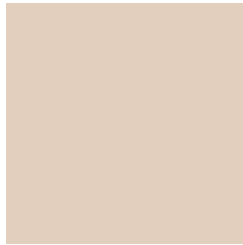
75.5840, 50.9841, -66.2872



21.6630, 14.4631, -18.9985

Previews

White Background



This preview shows how the YUV color 210.9280, -10.8105, 14.0951 looks on a white background.

Color Contrast Check

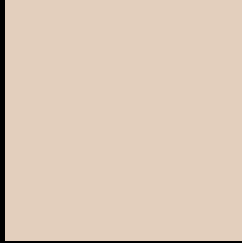
Large Text (above 18pt) WCAG AA × Fail

Any Text WCAG AA × Fail

Large Text (above 18pt) WCAG AAA × Fail

Any Text WCAG AAA × Fail

Black Background



This preview shows how the YUV color 210.9280, -10.8105, 14.0951 looks on a black background.

Color Contrast Check

Large Text (above 18pt) WCAG AA ✓ Pass

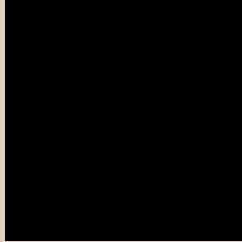
Any Text WCAG AA ✓ Pass

Large Text (above 18pt) WCAG AAA ✓ Pass

Any Text WCAG AAA ✓ Pass

If you want to check with other color combinations, try the [Color Contrast Checker](#).

YUV 210.9280, -10.8105, 14.0951 Background



This preview shows how black text looks on a background with the YUV color 210.9280, -10.8105, 14.0951.



This preview shows how white text looks on a background with the YUV color 210.9280, -10.8105, 14.0951.

Color Blindness Simulation

Color vision deficiency is a very complex topic, and I could not describe the different causes any better than Wikipedia does, so if you want to learn more, you should check out their [article about color blindness](#).

Dichromacy



Original Color

210.9280, -10.8105, 14.0951

Protanopia

210.4110, -10.0626, 7.5326

Deuteranopia

211.9830, -10.8376, 22.8169



Tritanopia

213.1960, 2.8614, 15.6141

Trichromacy



Original Color

210.9280, -10.8105, 14.0951

Protanomaly

210.7210, -10.2155, 9.8917

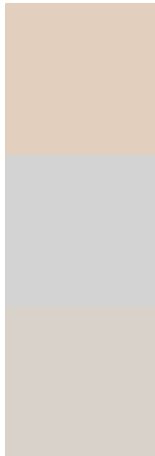
Deuteranomaly

211.3740, -10.5374, 19.8430

Tritanomaly

212.2300, -2.0854, 15.5843

Monochromacy



Original Color

210.9280, -10.8105, 14.0951

Achromatopsia

211.0000, 0.0000, 0.0000

Achromatomaly

211.2950, -4.0894, 5.0033

CSS Examples

Text

The CSS property to change the color of the text to YUV 210.9280, -10.8105, 14.0951 is called "color". The color property can be set on classes, ids or directly on the HTML element.

This example shows how text in the color `rgb(227, 207, 189)` looks like.

```
.text, #text, p{  
  color:rgb(227, 207, 189)  
}
```

If you want to add a text shadow in that color use the text-shadow property, you can generate a text shadow directly with our [CSS Text Shadow Generator](#).

Here you see how black text with a 4 pixel rgb(227, 207, 189) colored shadow looks like.

```
.shadow{ text-shadow: 4px 4px 2px rgb(227, 207, 189) }
```

Border

The CSS property to change the border of an element to YUV 210.9280, -10.8105, 14.0951 is called "border".

The border property can be set on classes, ids or directly on the HTML element.

This example shows the color as border, it can be applied via the CSS property "border" or "border-color".

```
.border, #border, table{ border:4px solid rgb(227, 207, 189) }
```


If only the border color should be changed use the property `border-color`.

```
.border{ border-color:rgb(227, 207, 189) }
```

If you want to add a box shadow in that color use:

Here you see how a box with a 4 pixel `rgb(227, 207, 189)` colored shadow looks like.

```
.boxshadow{ -moz-box-shadow:4px 4px 4px 4px rgb(227, 207, 189); -webkit-box-shadow:4px 4px 4px 4px rgb(227, 207, 189); box-shadow:4px 4px 4px 4px rgb(227, 207, 189) }
```

Background

The CSS property to change the background color of an element to YUV 210.9280, -10.8105, 14.0951 is called "background". The background property can be set on classes, ids or directly on the HTML element.

```
.background, #background, body{  
background: rgb(227, 207, 189) }
```

If only the background color should be changed can be used:

```
.background{ background-color: rgb(227,  
207, 189) }
```

This example shows the color as background, it is applied via the CSS property "background".

To optimize and compress your CSS code, you can use our [online CSS compressor and optimizer](#) based on csstidy. If you want to create a linear or radial gradient as background or border, check our [CSS Gradient Generator](#).

Hey! You found this booklet interesting? Support Converting Colors with the new Membership Option!

The pro membership hides all ads, plus gives you double the colors in the color bucket, and more awesome pro features!

[Learn more, Memberships starting at \\$2.50/m!](#)

**Follow me
on Twitter!**

@ConvertingColor