

Converting Colors

YUV(210.9390, -10.8159,
15.8395)

Have a look what the booklet for
YUV(210.9390, -10.8159, 15.8395)
contains.

YUV(210.9390, -10.8159, 15.8395)	3
<i>Conversions</i>	4
<i>Details</i>	6
<i>Harmonies</i>	12
<i>Previews</i>	24
<i>Color Blindness Simulation</i>	28
<i>CSS Examples</i>	31

Color

**YUV(210.9390, -10.8159,
15.8395)**

Conversions

Conversions Part 1

Format	Color
Hex	E5CEBD
RGB	229, 206, 189
RGB Percent	90%, 81%, 74%
CMY	0.1020, 0.1922, 0.2588
CMYK	0.00, 0.10, 0.17, 0.10
HSL	25°, 43%, 82%
HSV	25°, 17%, 90%
XYZ	63.5697, 64.4747, 57.2385
YIQ	210.9390, 19.1650, -0.4110

Conversions

Conversions Part 2

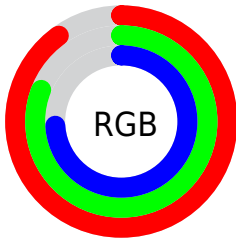
Format	Color
R _Y B	229, 219, 189
Decimal	15060669
CIE Lab	84.21, 5.31, 11.37
CIE LCh	84, 12.546, 64.955
Yxy	64.4747, 0.3431, 0.3480
Android (android.graphics.Color)	4293250749 (0xFFE5CEBD)
YUV	210.9390, -10.8159, 15.8395
Hunter-Lab	80.2962, 0.7985, 13.9429

Details

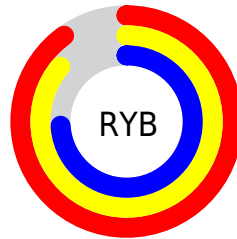
The YUV color $210.9390, -10.8159, 15.8395$ is a light color, and the websafe version is hex $CCCCCC$. A complement of this color would be $207.0610, 10.8159, -15.8395$, and the grayscale version is $211.0000, 0.0000, 0.0000$.

A 20% lighter version of the original color is $253.8600, -4.3680, 0.9998$, and $156.4550, -10.0843, 14.5100$ is the 20% darker color. If you saturate the color by 10%, you get $200.6860, -17.1002, 24.8314$, and if you desaturate by 10%, it is $221.1920, -4.5317, 6.8476$.

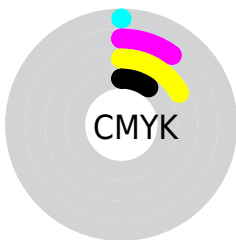
Distribution



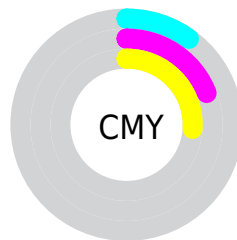
- Red (90%)
- Green (81%)
- Blue (74%)



- Red (90%)
- Yellow (86%)
- Blue (74%)



- Cyan (0%)
- Magenta (10%)
- Yellow (17%)
- Black (10%)



- Cyan (10%)
- Magenta (19%)
- Yellow (26%)

Brightness & Saturation Gradients

These gradients show how the YUV color 210.9390, -10.8159, 15.8395 changes by changing the brightness by 10 percent. The first figure shows a shift by +10% for each color and the second figure -10%.

Similar to the brightness gradients but the following saturation gradients show a change of the YUV color 210.9390, -10.8159, 15.8395 by changing the saturation by 10% instead.

■ 210.9390,
-10.8159, 15.8395

■ 210.9390,
-10.8159, 15.8395

255.0000, 0.0000,
0.0000

■ 183.6400,
-10.6685, 15.2247

■ 253.8600, -4.3680,
0.9998

■ 156.4550,
-10.0843, 14.5100

■ 130.1560, -9.9369,
13.8952

■ 104.9710, -9.3527,
13.1804

■ 80.7860, -8.7685,
12.4657

■ 57.6010, -8.1843,
11.7509

■ 36.0030, -7.8895,

10.5214

■ 14.8290, -7.3107,
11.5510

■ 0.0000, 0.0000,
0.0000

■ 210.9390,
-10.8159, 15.8395

■ 210.9390,
-10.8159, 15.8395

■ 200.6860,
-17.1002, 24.8314

■ 221.1920, -4.5317,
6.8476

■ 190.4330,
-23.3845, 33.8233

■ 231.4450, 1.7526,
-2.1443

■ 179.5930,
-29.3793, 43.3299

■ 241.9430, 6.4371,
-11.3510

■ 169.3400,
-35.6636, 52.3218

■ 247.2260, 3.8326,
-15.9842

■ 159.2010,
-41.5111, 61.2137

■ 148.9480,
-47.7954, 70.2056

■ 138.6950,
-54.0796, 79.1975

■ 128.4420,
-60.3639, 88.1894

■ 125.4100,
-61.8271, 90.8484

Harmonies

Analogous

The Analogous color harmony consists of three colors that are next to each other on the color wheel.



211.8840, -7.3378, 20.2727



210.9390, -10.8159, 15.8395



209.7700, -11.2256, 7.2177

Triad

The Triadic color harmony groups three colors that are evenly spaced from another and form a triangle on the color wheel.



210.9390, -10.8159, 15.8395



206.2640, 2.8278, -20.4025



211.3130, 8.7197, 3.2335

Complementary

The Complementary color scheme is a pair of colors which are on the opposite of each other on the color wheel.



210.9390, -10.8159, 15.8395



207.0610, 10.8159, -15.8395

Split Complementary

Split-complementary colors differ from the complementary color scheme. The scheme consists of three colors, the original color and two neighbors of the complement color.



209.6320, 11.5204, -8.4473



210.9390, -10.8159, 15.8395



206.3330, 8.2168, -22.2170

Square

The Square scheme is like the rectangle color scheme, but the four colors are evenly spaced on the color wheel.



210.9390, -10.8159, 15.8395



206.7010, -3.3036, -13.7698



207.8650, 11.4056, -18.2986



212.4130, 3.7404, 13.6698

Rectangle

The Rectangle color scheme consists of four colors that form a rectangle on the color wheel.



210.9390, -10.8159, 15.8395



208.4810, -9.6041, 0.4552



207.8650, 11.4056, -18.2986



211.2200, 9.7515, -1.0699

Sweetspot

The Sweet Spot groups the original color and five complimentary colors.



210.9390, -10.8159, 15.8395



249.4090, -3.6526, 4.9033



203.5820, 4.1501, 22.2916



124.1530, -2.0474, 3.3738



0.0000, 0.0000, 0.0000



128.0000, 0.0000, 0.0000

Same Dimension

The Same Dimension uses a secret algorithm to generate beautiful new colors.



210.9390, -10.8159, 15.8395



230.6470, -14.6160, 21.3576



222.6790, -16.6037, 5.5435



109.5230, -3.2158, 4.8033



98.1330, -48.3796, 70.9204



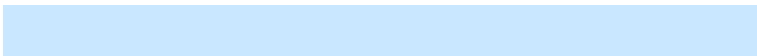
28.1630, -13.8844, 20.0280

Inverse Universe

The Inverse Universe completely reimagines the original color for something new.



207.0610, 10.8159, -15.8395



225.3530, 14.6160, -21.3576



195.3210, 16.6037, -5.5435



108.4770, 3.2158, -4.8033



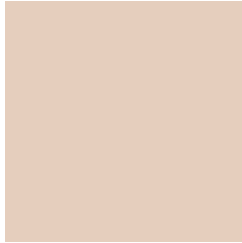
80.8670, 48.3796, -70.9204



22.8370, 13.8844, -20.0280

Previews

White Background



This preview shows how the YUV color 210.9390, -10.8159, 15.8395 looks on a white background.

Color Contrast Check

Large Text (above 18pt) WCAG AA × Fail

Any Text WCAG AA × Fail

Large Text (above 18pt) WCAG AAA × Fail

Any Text WCAG AAA × Fail

Black Background



This preview shows how the YUV color 210.9390, -10.8159, 15.8395 looks on a black background.

Color Contrast Check

Large Text (above 18pt) WCAG AA ✓ Pass

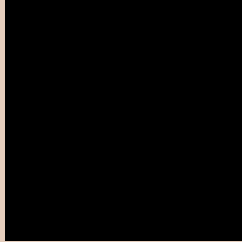
Any Text WCAG AA ✓ Pass

Large Text (above 18pt) WCAG AAA ✓ Pass

Any Text WCAG AAA ✓ Pass

If you want to check with other color combinations, try the [Color Contrast Checker](#).

YUV 210.9390, -10.8159, 15.8395 Background



This preview shows how black text looks on a background with the YUV color 210.9390, -10.8159, 15.8395.



This preview shows how white text looks on a background with the YUV color 210.9390, -10.8159, 15.8395.

15.8395.

Color Blindness Simulation

Color vision deficiency is a very complex topic, and I could not describe the different causes any better than Wikipedia does, so if you want to learn more, you should check out their [article about color blindness](#).

Dichromacy



Original Color

210.9390, -10.8159, 15.8395

Protanopia

209.6390, -9.1890, 7.3326

Deuteranopia

211.9830, -10.8376, 22.8169



Tritanopia

213.0930, 2.4192, 17.4584

Trichromacy



Original Color

210.9390, -10.8159, 15.8395

Protanomaly

210.1340, -9.9261, 10.4065

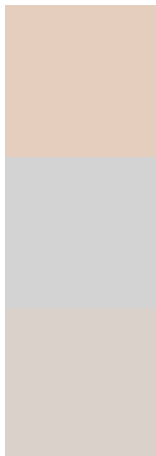
Deuteranomaly

211.6730, -10.6848, 20.4578

Tritanomaly

212.1270, -2.5276, 17.4286

Monochromacy



Original Color

210.9390, -10.8159, 15.8395

Achromatopsia

211.0000, 0.0000, 0.0000

Achromatomaly

211.0070, -3.9475, 6.1329

CSS Examples

Text

The CSS property to change the color of the text to YUV 210.9390, -10.8159, 15.8395 is called "color". The color property can be set on classes, ids or directly on the HTML element.

This example shows how text in the color `rgb(229, 206, 189)` looks like.

```
.text, #text, p{  
    color:rgb(229, 206, 189)  
}
```

If you want to add a text shadow in that color use the text-shadow property, you can generate a text shadow directly with our [CSS Text Shadow Generator](#).

Here you see how black text with a 4 pixel rgb(229, 206, 189) colored shadow looks like.

```
.shadow{ text-shadow: 4px 4px 2px rgb(229, 206, 189) }
```

Border

The CSS property to change the border of an element to YUV 210.9390, -10.8159, 15.8395 is called "border".

The border property can be set on classes, ids or directly on the HTML element.

This example shows the color as border, it can be applied via the CSS property "border" or "border-color".

```
.border, #border, table{ border:4px solid rgb(229, 206, 189) }
```


If only the border color should be changed use the property `border-color`.

```
.border{ border-color:rgb(229, 206, 189) }
```

If you want to add a box shadow in that color use:

Here you see how a box with a 4 pixel `rgb(229, 206, 189)` colored shadow looks like.

```
.boxshadow{ -moz-box-shadow:4px 4px 4px  
4px rgb(229, 206, 189); -webkit-box-  
shadow:4px 4px 4px 4px rgb(229, 206, 189);  
box-shadow:4px 4px 4px 4px rgb(229, 206,  
189) }
```

Background

The CSS property to change the background color of an element to YUV 210.9390, -10.8159, 15.8395 is called "background". The background property can be set on classes, ids or directly on the HTML element.

```
.background, #background, body{  
background: rgb(229, 206, 189) }
```

If only the background color should be changed can be used:

```
.background{ background-color: rgb(229,  
206, 189) }
```

This example shows the color as background, it is applied via the CSS property "background".

To optimize and compress your CSS code, you can use our [online CSS compressor and optimizer](#) based on csstidy. If you want to create a linear or radial gradient as background or border, check our [CSS Gradient Generator](#).

Hey! You found this booklet interesting? Support Converting Colors with the new Membership Option!

The pro membership hides all ads, plus gives you double the colors in the color bucket, and more awesome pro features!

[Learn more, Memberships starting at \\$2.50/m!](#)

**Follow me
on Twitter!**

@ConvertingColor