

Converting Colors

YUV(211.0100, -11.8369,
16.6542)

Have a look what the booklet for
YUV(211.0100, -11.8369, 16.6542)
contains.

YUV(211.0100, -11.8369, 16.6542)	3
<i>Conversions</i>	4
<i>Details</i>	6
<i>Harmonies</i>	12
<i>Previews</i>	24
<i>Color Blindness Simulation</i>	28
<i>CSS Examples</i>	31

Color

**YUV(211.0100, -11.8369,
16.6542)**

Conversions

Conversions Part 1

Format	Color
Hex	E6CEBB
RGB	230, 206, 187
RGB Percent	90%, 81%, 73%
CMY	0.0980, 0.1922, 0.2667
CMYK	0.00, 0.10, 0.19, 0.10
HSL	27°, 46%, 82%
HSV	27°, 19%, 90%
XYZ	63.6741, 64.5535, 56.1178
YIQ	211.0100, 20.4030, -0.8210

Conversions

Conversions Part 2

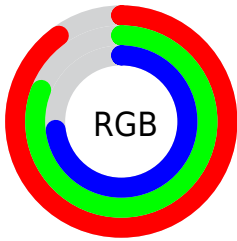
Format	Color
R _{YB}	230, 221, 187
Decimal	15126203
CIE Lab	84.25, 5.37, 12.50
CIE LCh	84, 13.604, 66.729
Yxy	64.5535, 0.3454, 0.3502
Android (android.graphics.Color)	4293316283 (0xFFE6CEBB)
YUV	211.0100, -11.8369, 16.6542
Hunter-Lab	80.3452, 0.8584, 14.8300

Details

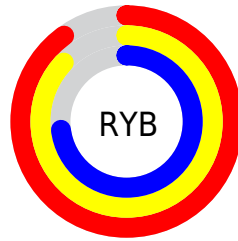
The YUV color $211.0100, -11.8369, 16.6542$ is a light color, and the websafe version is hex $CCCCCC$. A complement of this color would be $205.9900, 11.8369, -16.6542$, and the grayscale version is $211.0000, 0.0000, 0.0000$.

A 20% lighter version of the original color is $253.6320, -5.2416, 1.1997$, and $156.5260, -11.1053, 15.3247$ is the 20% darker color. If you saturate the color by 10%, you get $200.7570, -18.1212, 25.6461$, and if you desaturate by 10%, it is $221.2630, -5.5527, 7.6623$.

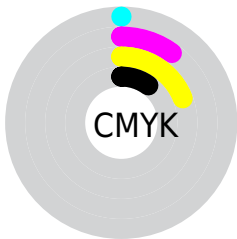
Distribution



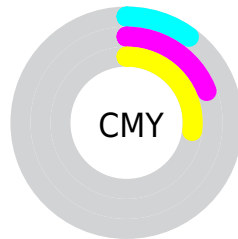
- Red (90%)
- Green (81%)
- Blue (73%)



- Red (90%)
- Yellow (87%)
- Blue (73%)



- Cyan (0%)
- Magenta (10%)
- Yellow (19%)
- Black (10%)



- Cyan (10%)
- Magenta (19%)
- Yellow (27%)

Brightness & Saturation Gradients

These gradients show how the YUV color 211.0100, -11.8369, 16.6542 changes by changing the brightness by 10 percent. The first figure shows a shift by +10% for each color and the second figure -10%.

Similar to the brightness gradients but the following saturation gradients show a change of the YUV color 211.0100, -11.8369, 16.6542 by changing the saturation by 10% instead.

■ 211.0100,
-11.8369, 16.6542

■ 211.0100,
-11.8369, 16.6542

255.0000, 0.0000,
0.0000

■ 183.7110,
-11.6895, 16.0395

■ 253.6320, -5.2416,
1.1997

■ 156.5260,
-11.1053, 15.3247

■ 130.3410,
-10.5211, 14.6099

■ 105.0420,
-10.3737, 13.9952

■ 80.8570, -9.7895,
13.2804

■ 57.6720, -9.2053,
12.5657

■ 36.1880, -8.4737,

11.2361

■ 14.8290, -7.3107,
11.5510

■ 0.0000, 0.0000,
0.0000

■ 211.0100,
-11.8369, 16.6542

■ 211.0100,
-11.8369, 16.6542

■ 200.7570,
-18.1212, 25.6461

■ 221.2630, -5.5527,
7.6623

■ 190.5040,
-24.4055, 34.6380

■ 231.5160, 0.7316,
-1.3295

■ 180.2510,
-30.6897, 43.6299

■ 241.6550, 6.5791,
-10.2214

■ 170.5850,
-37.2634, 52.1070

■ 247.5250, 3.6852,
-15.3694

■ 160.3320,
-43.5477, 61.0988

■ 150.0790,
-49.8319, 70.0907

■ 139.8260,
-56.1162, 79.0826

■ 129.5730,
-62.4005, 88.0745

■ 128.6440,
-63.4215, 88.8892

Harmonies

Analogous

The Analogous color harmony consists of three colors that are next to each other on the color wheel.



212.2540, -8.5062, 21.7022



211.0100, -11.8369, 16.6542



209.5420, -12.0992, 7.4177

Triad

The Triadic color harmony groups three colors that are evenly spaced from another and form a triangle on the color wheel.



211.0100, -11.8369, 16.6542



206.0680, 3.4175, -22.8616



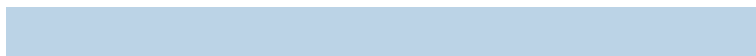
211.8400, 9.4459, 3.6483

Complementary

The Complementary color scheme is a pair of colors which are on the opposite of each other on the color wheel.



211.0100, -11.8369, 16.6542



205.9900, 11.8369, -16.6542

Split Complementary

Split-complementary colors differ from the complementary color scheme. The scheme consists of three colors, the original color and two neighbors of the complement color.



209.8600, 12.3940, -8.6472



211.0100, -11.8369, 16.6542



206.2510, 9.2433, -24.7761

Square

The Square scheme is like the rectangle color scheme, but the four colors are evenly spaced on the color wheel.



211.0100, -11.8369, 16.6542



206.6900, -3.2982, -15.5141



207.7940, 12.4266, -19.1133



213.1250, 3.8824, 14.7994

Rectangle

The Rectangle color scheme consists of four colors that form a rectangle on the color wheel.



211.0100, -11.8369, 16.6542



208.5410, -10.6197, -0.4745



207.7940, 12.4266, -19.1133



211.1600, 10.7671, -0.1403

Sweetspot

The Sweet Spot groups the original color and five complimentary colors.



211.0100, -11.8369, 16.6542



248.0070, -3.9475, 6.1329



202.5930, 4.1447, 24.0359



124.0390, -2.4842, 3.4738



0.0000, 0.0000, 0.0000



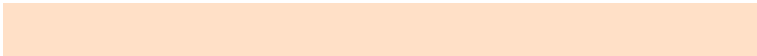
128.0000, 0.0000, 0.0000

Same Dimension

The Same Dimension uses a secret algorithm to generate beautiful new colors.



211.0100, -11.8369, 16.6542



230.4190, -15.4896, 21.5575



223.3370, -17.9141, 5.8435



109.5230, -3.2158, 4.8033



99.8940, -49.2477, 69.3760



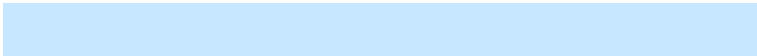
28.7500, -14.1738, 19.5132

Inverse Universe

The Inverse Universe completely reimagines the original color for something new.



205.9900, 11.8369, -16.6542



223.5810, 15.4896, -21.5575



193.6630, 17.9141, -5.8435



108.4770, 3.2158, -4.8033



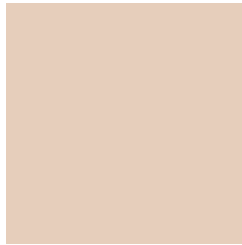
79.1060, 49.2477, -69.3760



22.2500, 14.1738, -19.5132

Previews

White Background



This preview shows how the YUV color 211.0100, -11.8369, 16.6542 looks on a white background.

Color Contrast Check

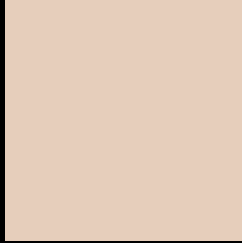
Large Text (above 18pt) WCAG AA × Fail

Any Text WCAG AA × Fail

Large Text (above 18pt) WCAG AAA × Fail

Any Text WCAG AAA × Fail

Black Background



This preview shows how the YUV color 211.0100, -11.8369, 16.6542 looks on a black background.

Color Contrast Check

Large Text (above 18pt) WCAG AA ✓ Pass

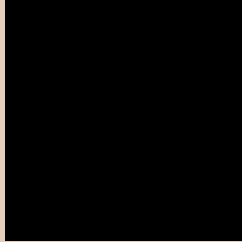
Any Text WCAG AA ✓ Pass

Large Text (above 18pt) WCAG AAA ✓ Pass

Any Text WCAG AAA ✓ Pass

If you want to check with other color combinations, try the [Color Contrast Checker](#).

YUV 211.0100, -11.8369, 16.6542 Background



This preview shows how black text looks on a background with the YUV color 211.0100, -11.8369, 16.6542.



This preview shows how white text looks on a background with the YUV color 211.0100, -11.8369, 16.6542.

Color Blindness Simulation

Color vision deficiency is a very complex topic, and I could not describe the different causes any better than Wikipedia does, so if you want to learn more, you should check out their [article about color blindness](#).

Dichromacy



Original Color

211.0100, -11.8369, 16.6542

Protanopia

210.2970, -10.4994, 7.6325

Deuteranopia

212.0540, -11.8586, 23.6316



Tritanopia

213.2780, 1.8349, 18.1732

Trichromacy



Original Color

211.0100, -11.8369, 16.6542

Protanomaly

210.7920, -11.2365, 10.7064

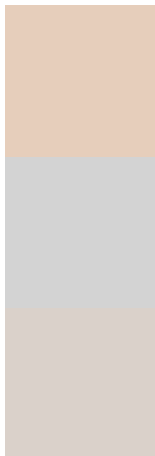
Deuteranomaly

211.7440, -11.7058, 21.2725

Tritanomaly

212.3120, -3.1118, 18.1434

Monochromacy



Original Color

211.0100, -11.8369, 16.6542

Achromatopsia

211.0000, 0.0000, 0.0000

Achromatomaly

210.8930, -4.3842, 6.2328

CSS Examples

Text

The CSS property to change the color of the text to YUV 211.0100, -11.8369, 16.6542 is called "color". The color property can be set on classes, ids or directly on the HTML element.

This example shows how text in the color `rgb(230, 206, 187)` looks like.

```
.text, #text, p{  
    color:rgb(230, 206, 187)  
}
```

If you want to add a text shadow in that color use the text-shadow property, you can generate a text shadow directly with our [CSS Text Shadow Generator](#).

Here you see how black text with a 4 pixel rgb(230, 206, 187) colored shadow looks like.

```
.shadow{ text-shadow: 4px 4px 2px rgb(230, 206, 187) }
```

Border

The CSS property to change the border of an element to YUV 211.0100, -11.8369, 16.6542 is called "border".

The border property can be set on classes, ids or directly on the HTML element.

This example shows the color as border, it can be applied via the CSS property "border" or "border-color".

```
.border, #border, table{ border:4px solid rgb(230, 206, 187) }
```


If only the border color should be changed use the property `border-color`.

```
.border{ border-color:rgb(230, 206, 187) }
```

If you want to add a box shadow in that color use:

Here you see how a box with a 4 pixel `rgb(230, 206, 187)` colored shadow looks like.

```
.boxshadow{ -moz-box-shadow:4px 4px 4px  
4px rgb(230, 206, 187); -webkit-box-  
shadow:4px 4px 4px 4px rgb(230, 206, 187);  
box-shadow:4px 4px 4px 4px rgb(230, 206,  
187) }
```

Background

The CSS property to change the background color of an element to YUV 211.0100, -11.8369, 16.6542 is called "background". The background property can be set on classes, ids or directly on the HTML element.

```
.background, #background, body{  
background: rgb(230, 206, 187) }
```

If only the background color should be changed can be used:

```
.background{ background-color: rgb(230,  
206, 187) }
```

This example shows the color as background, it is applied via the CSS property "background".

To optimize and compress your CSS code, you can use our [online CSS compressor and optimizer](#) based on csstidy. If you want to create a linear or radial gradient as background or border, check our [CSS Gradient Generator](#).

Hey! You found this booklet interesting? Support Converting Colors with the new Membership Option!

The pro membership hides all ads, plus gives you double the colors in the color bucket, and more awesome pro features!

[Learn more, Memberships starting at \\$2.50/m!](#)

**Follow me
on Twitter!**

@ConvertingColor