

# Converting Colors

YUV(211.1320, -16.8271,  
30.5792)

Have a look what the booklet for  
YUV(211.1320, -16.8271, 30.5792)  
contains.

<b>YUV(211.1320, -16.8271, 30.5792)</b> .....	3
<b><i>Conversions</i></b> .....	4
<b><i>Details</i></b> .....	6
<b><i>Harmonies</i></b> .....	12
<b><i>Previews</i></b> .....	24
<b><i>Color Blindness Simulation</i></b> .....	28
<b><i>CSS Examples</i></b> .....	31

# Color

**YUV(211.1320, -16.8271,  
30.5792)**

# Conversions

## Conversions Part 1

Format	Color
Hex	F6C8B1
RGB	246, 200, 177
RGB Percent	96%, 78%, 69%
CMY	0.0353, 0.2157, 0.3059
CMYK	0.00, 0.19, 0.28, 0.04
HSL	20°, 79%, 83%
HSV	20°, 28%, 96%
XYZ	66.5961, 64.0757, 50.4528
YIQ	211.1320, 34.7990, 2.5990

# Conversions

## Conversions Part 2

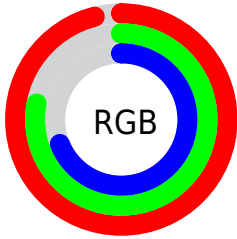
Format	Color
<a href="#">RYB</a>	<a href="#">246, 212, 177</a>
Decimal	<a href="#">16173233</a>
CIELab	<a href="#">84.01, 13.04, 17.66</a>
CIELCh	<a href="#">84, 21.949, 53.564</a>
Yxy	<a href="#">64.0757, 0.3677, 0.3538</a>
Android (android.graphics.Color)	<a href="#">4294363313</a> ( <a href="#">0xFFFF6C8B1</a> )
YUV	<a href="#">211.1320, -16.8271, 30.5792</a>
Hunter-Lab	<a href="#">80.0473, 8.4220, 18.6634</a>

# Details

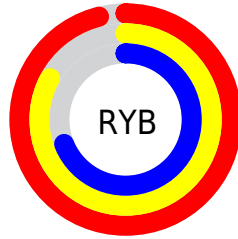
The YUV color  $211.1320, -16.8271, 30.5792$  is a light color, and the websafe version is hex  $\text{FFCCCC}$ . A complement of this color would be  $211.8680, 16.8271, -30.5792$ , and the grayscale version is  $211.0000, 0.0000, 0.0000$ .

A 20% lighter version of the original color is  $252.4920, -9.6096, 2.1995$ , and  $156.3490, -15.9481, 28.6349$  is the 20% darker color. If you saturate the color by 10%, you get  $198.8900, -23.1168, 41.3155$ , and if you desaturate by 10%, it is  $223.3740, -10.5374, 19.8430$ .

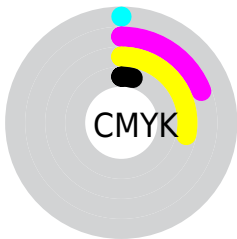
# Distribution



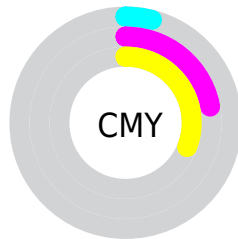
- Red (96%)
- Green (78%)
- Blue (69%)



- Red (96%)
- Yellow (83%)
- Blue (69%)



- Cyan (0%)
- Magenta (19%)
- Yellow (28%)
- Black (4%)



- Cyan (4%)
- Magenta (22%)
- Yellow (31%)

# Brightness & Saturation Gradients

These gradients show how the YUV color 211.1320, -16.8271, 30.5792 changes by changing the brightness by 10 percent. The first figure shows a shift by +10% for each color and the second figure -10%.

Similar to the brightness gradients but the following saturation gradients show a change of the YUV color 211.1320, -16.8271, 30.5792 by changing the saturation by 10% instead.



211.1320,  
-16.8271, 30.5792

211.1320,  
-16.8271, 30.5792

255.0000, 0.0000,  
0.0000

183.5340,  
-16.5323, 29.3497

252.4920, -9.6096,  
2.1995

156.3490,  
-15.9481, 28.6349

129.8650,  
-15.2164, 27.3054

104.3810,  
-14.4848, 25.9759

80.5980, -13.6058,  
24.0316

56.8150, -12.7268,  
22.0872

34.6900, -13.1582,

20.4429

■ 12.8130, -6.3168,  
19.4580

■ 0.0000, 0.0000,  
0.0000

■ 211.1320,  
-16.8271, 30.5792

■ 211.1320,  
-16.8271, 30.5792

■ 198.8900,  
-23.1168, 41.3155

■ 223.3740,  
-10.5374, 19.8430

■ 186.1750,  
-28.6803, 52.4665

■ 236.0890, -4.9739,  
8.6919

■ 173.9330,  
-34.9700, 63.2028

■ 248.3310, 1.3158,  
-2.0443

■ 161.2180,  
-40.5335, 74.3538

■ 252.3090, 1.3267,  
-5.5330

■ 148.9760,  
-46.8232, 85.0900

■ 136.7340,  
-53.1129, 95.8263

■ 124.0190,  
-58.6764, 106.9773

■ 121.6880,  
-59.9922, 109.0216

# Harmonies

## Analogous

The Analogous color harmony consists of three colors that are next to each other on the color wheel.



212.8150, -9.2758, 35.2422



211.1320, -16.8271, 30.5792



209.5450, -19.9887, 17.9390

# Triad

The Triadic color harmony groups three colors that are evenly spaced from another and form a triangle on the color wheel.



211.1320, -16.8271, 30.5792



202.0190, 0.9766, -33.3427



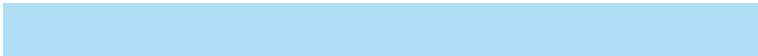
210.9730, 17.7613, -3.4843

# Complementary

The Complementary color scheme is a pair of colors which are on the opposite of each other on the color wheel.



211.1320, -16.8271, 30.5792



211.8680, 16.8271, -30.5792

# Split Complementary

Split-complementary colors differ from the complementary color scheme. The scheme consists of three colors, the original color and two neighbors of the complement color.



207.3510, 21.0260, -23.9868



211.1320, -16.8271, 30.5792



201.4230, 11.6235, -41.5900

# Square

The Square scheme is like the rectangle color scheme, but the four colors are evenly spaced on the color wheel.



211.1320, -16.8271, 30.5792



203.9580, -9.8393, -17.5032



203.0950, 19.1802, -38.6713



212.8570, 10.4235, 16.7884



# Rectangle

The Rectangle color scheme consists of four colors that form a rectangle on the color wheel.



211.1320, -16.8271, 30.5792



207.7070, -19.0826, 7.2730



203.0950, 19.1802, -38.6713



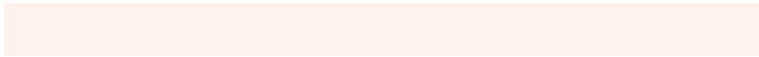
209.6840, 19.3828, -10.2469

# Sweetspot

The Sweet Spot groups the original color and five complimentary colors.



211.1320, -16.8271, 30.5792



244.5020, -4.6845, 9.2067



202.8750, 9.9216, 37.8206



121.2350, -3.0739, 5.9329



0.0000, 0.0000, 0.0000



128.0000, 0.0000, 0.0000



# Same Dimension

The Same Dimension uses a secret algorithm to generate beautiful new colors.



211.1320, -16.8271, 30.5792



211.0360, -21.2167, 38.5564



231.6770, -26.9558, 12.5613



115.9360, -2.9264, 5.3181



92.0080, -45.3599, 82.4310



29.3810, -14.4848, 25.9759

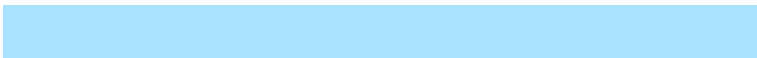


# Inverse Universe

The Inverse Universe completely reimagines the original color for something new.



211.8680, 16.8271, -30.5792



211.9640, 21.2167, -38.5564



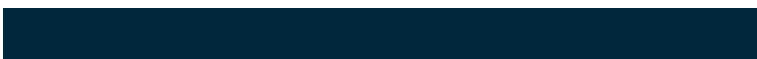
191.9100, 26.6664, -13.0761



116.0640, 2.9264, -5.3181



93.9920, 45.3599, -82.4310

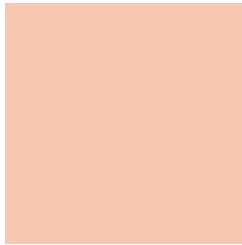


29.6190, 14.4848, -25.9759



# Previews

## White Background



This preview shows how the YUV color 211.1320, -16.8271, 30.5792 looks on a white background.

## Color Contrast Check

Large Text (above 18pt) WCAG AA × Fail

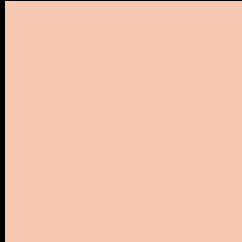
Any Text WCAG AA × Fail

Large Text (above 18pt) WCAG AAA × Fail

Any Text WCAG AAA × Fail



# Black Background



This preview shows how the YUV color 211.1320, -16.8271, 30.5792 looks on a black background.

## Color Contrast Check

Large Text (above 18pt) WCAG AA ✓ Pass

Any Text WCAG AA ✓ Pass

Large Text (above 18pt) WCAG AAA ✓ Pass

Any Text WCAG AAA ✓ Pass

If you want to check with other color combinations, try the [Color Contrast Checker](#).

# YUV 211.1320, -16.8271, 30.5792

## Background



This preview shows how black text looks on a background with the YUV color 211.1320, -16.8271, 30.5792.



This preview shows how white text looks on a background with the YUV color 211.1320, -16.8271, 30.5792.

30.5792.

# Color Blindness Simulation

Color vision deficiency is a very complex topic, and I could not describe the different causes any better than Wikipedia does, so if you want to learn more, you should check out their [article about color blindness](#).

## Dichromacy



### Original Color

211.1320, -16.8271, 30.5792

### Protanopia

209.2110, -13.4150, 9.4620

### Deuteranopia

211.1100, -16.8162, 27.0905



## Tritanopia

213.1550, -1.5554, 32.3131

# Trichromacy



## Original Color

211.1320, -16.8271, 30.5792

## Protanomaly

209.9130, -14.7471, 16.7393

## Deuteranomaly

210.8220, -16.6742, 28.2201

## Tritanomaly

212.6620, -7.2284, 31.8684

# Monochromacy



## Original Color

211.1320, -16.8271, 30.5792

## Achromatopsia

211.0000, 0.0000, 0.0000

## Achromatomaly

211.1710, -6.0003, 11.2510

# CSS Examples

## Text

The CSS property to change the color of the text to YUV 211.1320, -16.8271, 30.5792 is called "color". The color property can be set on classes, ids or directly on the HTML element.

This example shows how text in the color `rgb(246, 200, 177)` looks like.

```
.text, #text, p{  
    color:rgb(246, 200, 177)  
}
```

If you want to add a text shadow in that color use the text-shadow property, you can generate a text shadow directly with our [CSS Text Shadow Generator](#).

Here you see how black text with a 4 pixel rgb(246, 200, 177) colored shadow looks like.

```
.shadow{ text-shadow: 4px 4px 2px rgb(246, 200, 177) }
```

## Border

The CSS property to change the border of an element to YUV 211.1320, -16.8271, 30.5792 is called "border".

The border property can be set on classes, ids or directly on the HTML element.

This example shows the color as border, it can be applied via the CSS property "border" or "border-color".

```
.border, #border, table{ border:4px solid rgb(246, 200, 177) }
```



If only the border color should be changed use the property `border-color`.

```
.border{ border-color:rgb(246, 200, 177) }
```

If you want to add a box shadow in that color use:

Here you see how a box with a 4 pixel `rgb(246, 200, 177)` colored shadow looks like.

```
.boxshadow{ -moz-box-shadow:4px 4px 4px  
4px rgb(246, 200, 177); -webkit-box-  
shadow:4px 4px 4px 4px rgb(246, 200, 177);  
box-shadow:4px 4px 4px 4px rgb(246, 200,  
177) }
```

# Background

The CSS property to change the background color of an element to YUV 211.1320, -16.8271, 30.5792 is called "background". The background property can be set on classes, ids or directly on the HTML element.

```
.background, #background, body{  
background: rgb(246, 200, 177) }
```

If only the background color should be changed can be used:

```
.background{ background-color: rgb(246,  
200, 177) }
```

This example shows the color as background, it is applied via the CSS property "background".

To optimize and compress your CSS code, you can use our [online CSS compressor and optimizer](#) based on csstidy. If you want to create a linear or radial gradient as background or border, check our [CSS Gradient Generator](#).

Hey! You found this booklet interesting? Support Converting Colors with the new Membership Option!

The pro membership hides all ads, plus gives you double the colors in the color bucket, and more awesome pro features!

**[Learn more, Memberships starting at \\$2.50/m!](#)**

**Follow me  
on Twitter!**

@ConvertingColor