

Converting Colors

YUV(211.5350, -4.7008,
14.4398)

Have a look what the booklet for
YUV(211.5350, -4.7008, 14.4398)
contains.

YUV(211.5350, -4.7008, 14.4398)	3
<i>Conversions</i>	4
<i>Details</i>	6
<i>Harmonies</i>	12
<i>Previews</i>	24
<i>Color Blindness Simulation</i>	28
<i>CSS Examples</i>	31

Color

**YUV(211.5350, -4.7008,
14.4398)**

Conversions

Conversions Part 1

Format	Color
Hex	E4CDCA
RGB	228, 205, 202
RGB Percent	89%, 80%, 79%
CMY	0.1059, 0.1961, 0.2078
CMYK	0.00, 0.10, 0.11, 0.11
HSL	7°, 33%, 84%
HSV	7°, 11%, 89%
XYZ	64.4869, 64.4209, 64.9128
YIQ	211.5350, 14.6710, 3.9430

Conversions

Conversions Part 2

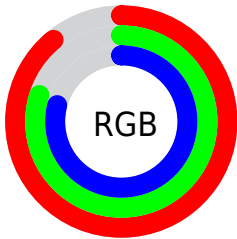
Format	Color
R _Y B	228, 205, 202
Decimal	14994890
CIE Lab	84.18, 7.52, 4.40
CIE LCh	84, 8.719, 30.346
Yxy	64.4209, 0.3327, 0.3324
Android (android.graphics.Color)	4293184970 (0xFFE4CDCA)
YUV	211.5350, -4.7008, 14.4398
Hunter-Lab	80.2626, 2.9560, 8.2328

Details

The YUV color $211.5350, -4.7008, 14.4398$ is a light color, and the websafe version is hex `CCCCCC`. A complement of this color would be $218.4650, 4.7008, -14.4398$, and the grayscale version is $212.0000, 0.0000, 0.0000$.

A 20% lighter version of the original color is $255.0000, 0.0000, 0.0000$, and $156.9370, -4.4059, 13.2103$ is the 20% darker color. If you saturate the color by 10%, you get $197.1730, -8.9593, 27.0353$, and if you desaturate by 10%, it is $225.8970, -0.4422, 1.8443$.

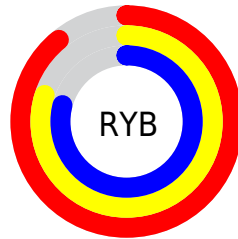
Distribution



Red (89%)

Green (80%)

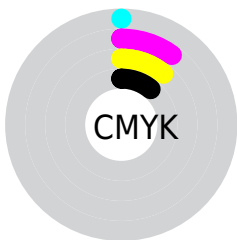
Blue (79%)



Red (89%)

Yellow (80%)

Blue (79%)

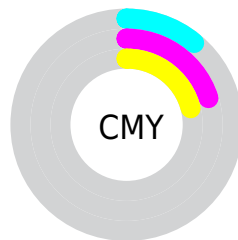


Cyan (0%)

Magenta (10%)

Yellow (11%)

Black (11%)



Cyan (11%)

Magenta (20%)

Yellow (21%)

Brightness & Saturation Gradients

These gradients show how the YUV color 211.5350, -4.7008, 14.4398 changes by changing the brightness by 10 percent. The first figure shows a shift by +10% for each color and the second figure -10%.

Similar to the brightness gradients but the following saturation gradients show a change of the YUV color 211.5350, -4.7008, 14.4398 by changing the saturation by 10% instead.

■ 211.5350, -4.7008,
14.4398

■ 211.5350, -4.7008,
14.4398

255.0000, 0.0000,
0.0000

■ 184.2360, -4.5533,
13.8250

■ 156.9370, -4.4059,
13.2103

■ 130.9370, -4.4059,
13.2103

■ 105.6380, -4.2585,
12.5955

■ 81.4530, -3.6743,
11.8807

■ 58.1540, -3.5269,
11.2659

■ 36.5560, -3.2321,

10.0364

■ 14.5240, -4.6953,
12.6955

■ 0.0000, 0.0000,
0.0000

■ 211.5350, -4.7008,
14.4398

■ 211.5350, -4.7008,
14.4398

■ 197.1730, -8.9593,
27.0353

■ 225.8970, -0.4422,
1.8443

■ 182.8110,
-13.2178, 39.6308

■ 240.2590, 3.8163,
-10.7511

■ 167.9760,
-16.7502, 52.6410

■ 246.9270, 3.9800,
-16.5990

■ 153.6140,
-21.0087, 65.2365

■ 139.2520,
-25.2672, 77.8320

■ 124.8900,
-29.5258, 90.4275

■ 110.5280,
-33.7843, 103.0229

■ 96.2800, -37.6060,
115.5184

■ 83.4340, -41.1330,
126.7844

Harmonies

Analogous

The Analogous color harmony consists of three colors that are next to each other on the color wheel.



212.1480, -1.0590, 13.0252



211.5350, -4.7008, 14.4398



210.8290, -7.3107, 11.5510

Triad

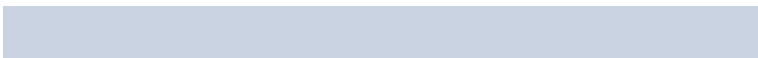
The Triadic color harmony groups three colors that are evenly spaced from another and form a triangle on the color wheel.



211.5350, -4.7008, 14.4398



207.8480, -2.8831, -8.6367



210.0190, 7.8786, -7.0327

Complementary

The Complementary color scheme is a pair of colors which are on the opposite of each other on the color wheel.



211.5350, -4.7008, 14.4398



218.4650, 4.7008, -14.4398

Split Complementary

Split-complementary colors differ from the complementary color scheme. The scheme consists of three colors, the original color and two neighbors of the complement color.



208.5730, 7.6055, -12.7805



211.5350, -4.7008, 14.4398



207.5530, 1.2064, -13.6400

Square

The Square scheme is like the rectangle color scheme, but the four colors are evenly spaced on the color wheel.



211.5350, -4.7008, 14.4398



208.9800, -6.3991, -0.8595



207.8670, 4.9956, -15.6694



211.0200, 6.3991, 0.8595

Rectangle

The Rectangle color scheme consists of four colors that form a rectangle on the color wheel.



211.5350, -4.7008, 14.4398



209.9920, -7.8841, 8.7770



207.8670, 4.9956, -15.6694



209.1220, 8.3209, -8.8770

Sweetspot

The Sweet Spot groups the original color and five complimentary colors.



211.5350, -4.7008, 14.4398



249.9790, -1.4686, 4.4034



212.3960, 6.2138, 13.6847



124.3810, -1.1738, 3.1739



0.0000, 0.0000, 0.0000



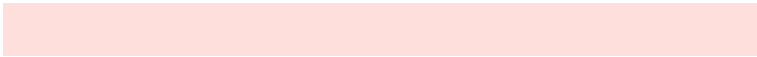
128.0000, 0.0000, 0.0000

Same Dimension

The Same Dimension uses a secret algorithm to generate beautiful new colors.



211.5350, -4.7008, 14.4398



232.1120, -6.4642, 20.0728



219.1660, -8.4628, 7.7474



107.7620, -2.3477, 6.3477



65.8480, -32.4631, 99.2343



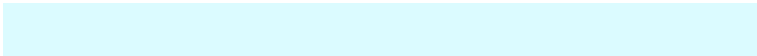
18.7710, -9.2541, 28.2648

Inverse Universe

The Inverse Universe completely reimagines the original color for something new.



218.4650, 4.7008, -14.4398



241.8880, 6.4642, -20.0728



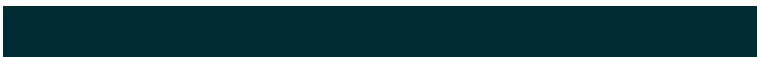
210.8340, 8.4628, -7.7474



110.2380, 2.3477, -6.3477



113.1520, 32.4631, -99.2343



32.2290, 9.2541, -28.2648

Previews

White Background



This preview shows how the YUV color 211.5350, -4.7008, 14.4398 looks on a white background.

Color Contrast Check

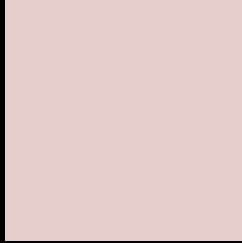
Large Text (above 18pt) WCAG AA × Fail

Any Text WCAG AA × Fail

Large Text (above 18pt) WCAG AAA × Fail

Any Text WCAG AAA × Fail

Black Background



This preview shows how the YUV color 211.5350, -4.7008, 14.4398 looks on a black background.

Color Contrast Check

Large Text (above 18pt) WCAG AA ✓ Pass

Any Text WCAG AA ✓ Pass

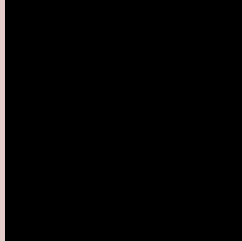
Large Text (above 18pt) WCAG AAA ✓ Pass

Any Text WCAG AAA ✓ Pass

If you want to check with other color combinations, try the [Color Contrast Checker](#).

YUV 211.5350, -4.7008, 14.4398

Background



This preview shows how black text looks on a background with the YUV color 211.5350, -4.7008, 14.4398.



This preview shows how white text looks on a background with the YUV color 211.5350, -4.7008,

Color Blindness Simulation

Color vision deficiency is a very complex topic, and I could not describe the different causes any better than Wikipedia does, so if you want to learn more, you should check out their [article about color blindness](#).

Dichromacy



Original Color

211.5350, -4.7008, 14.4398

Protanopia

210.2240, -3.0684, 4.1886

Deuteranopia

211.8560, -4.8590, 18.5433



Tritanopia

212.1960, 2.8614, 15.6141

Trichromacy



Original Color

211.5350, -4.7008, 14.4398

Protanomaly

211.0180, -3.9529, 7.8772

Deuteranomaly

211.8450, -4.8536, 16.7989

Tritanomaly

211.8000, 0.0986, 15.0844

Monochromacy



Original Color

211.5350, -4.7008, 14.4398

Achromatopsia

212.0000, 0.0000, 0.0000

Achromatomaly

211.5770, -1.7635, 5.6330

CSS Examples

Text

The CSS property to change the color of the text to YUV 211.5350, -4.7008, 14.4398 is called "color". The color property can be set on classes, ids or directly on the HTML element.

This example shows how text in the color `rgb(228, 205, 202)` looks like.

```
.text, #text, p{  
    color:rgb(228, 205, 202)  
}
```

If you want to add a text shadow in that color use the text-shadow property, you can generate a text shadow directly with our [CSS Text Shadow Generator](#).

Here you see how black text with a 4 pixel rgb(228, 205, 202) colored shadow looks like.

```
.shadow{ text-shadow: 4px 4px 2px rgb(228, 205, 202) }
```

Border

The CSS property to change the border of an element to YUV 211.5350, -4.7008, 14.4398 is called "border". The border property can be set on classes, ids or directly on the HTML element.

This example shows the color as border, it can be applied via the CSS property "border" or "border-color".

```
.border, #border, table{ border:4px solid rgb(228, 205, 202) }
```


If only the border color should be changed use the property `border-color`.

```
.border{ border-color:rgb(228, 205, 202) }
```

If you want to add a box shadow in that color use:

Here you see how a box with a 4 pixel `rgb(228, 205, 202)` colored shadow looks like.

```
.boxshadow{ -moz-box-shadow:4px 4px 4px  
4px rgb(228, 205, 202); -webkit-box-  
shadow:4px 4px 4px 4px rgb(228, 205, 202);  
box-shadow:4px 4px 4px 4px rgb(228, 205,  
202) }
```

Background

The CSS property to change the background color of an element to YUV 211.5350, -4.7008, 14.4398 is called "background". The background property can be set on classes, ids or directly on the HTML element.

```
.background, #background, body{  
background: rgb(228, 205, 202) }
```

If only the background color should be changed can be used:

```
.background{ background-color: rgb(228,  
205, 202) }
```

This example shows the color as background, it is applied via the CSS property "background".

To optimize and compress your CSS code, you can use our [online CSS compressor and optimizer](#) based on csstidy. If you want to create a linear or radial gradient as background or border, check our [CSS Gradient Generator](#).

Hey! You found this booklet interesting? Support Converting Colors with the new Membership Option!

The pro membership hides all ads, plus gives you double the colors in the color bucket, and more awesome pro features!

[Learn more, Memberships starting at \\$2.50/m!](#)

**Follow me
on Twitter!**

@ConvertingColor