

Converting Colors

YUV(211.6410, -12.1480,
23.1168)

Have a look what the booklet for
YUV(211.6410, -12.1480, 23.1168)
contains.

YUV(211.6410, -12.1480, 23.1168)	3
<i>Conversions</i>	4
<i>Details</i>	6
<i>Harmonies</i>	12
<i>Previews</i>	24
<i>Color Blindness Simulation</i>	28
<i>CSS Examples</i>	31

Color

**YUV(211.6410, -12.1480,
23.1168)**

Conversions

Conversions Part 1

Format	Color
Hex	<code>EECBBB</code>
RGB	<code>238, 203, 187</code>
RGB Percent	<code>93%, 80%, 73%</code>
CMY	<code>0.0667, 0.2039, 0.2667</code>
CMYK	<code>0.00, 0.15, 0.21, 0.07</code>
HSL	<code>19°, 60%, 83%</code>
HSV	<code>19°, 21%, 93%</code>
XYZ	<code>65.5855, 64.4769, 56.0023</code>
YIQ	<code>211.6410, 25.9960, 2.4440</code>

Conversions

Conversions Part 2

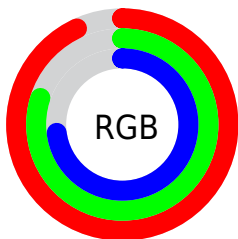
Format	Color
R _Y B	238, 210, 187
Decimal	15649723
CIE Lab	84.21, 9.88, 12.54
CIE LCh	84, 15.964, 51.764
Yxy	64.4769, 0.3525, 0.3465
Android (android.graphics.Color)	4293839803 (0xFFEECB BB)
YUV	211.6410, -12.1480, 23.1168
Hunter-Lab	80.2975, 5.2748, 14.8573

Details

The YUV color $211.6410, -12.1480, 23.1168$ is a light color, and the websafe version is hex FFCCCC . A complement of this color would be $213.3590, 12.1480, -23.1168$, and the grayscale version is $212.0000, 0.0000, 0.0000$.

A 20% lighter version of the original color is $253.6320, -5.2416, 1.1997$, and $157.1570, -11.4164, 21.7873$ is the 20% darker color. If you saturate the color by 10%, you get $199.5130, -18.0009, 33.7531$, and if you desaturate by 10%, it is $223.7690, -6.2951, 12.4806$.

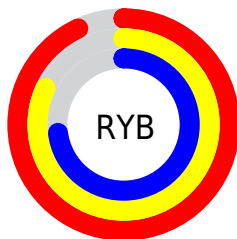
Distribution



Red (93%)

Green (80%)

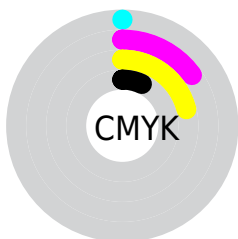
Blue (73%)



Red (93%)

Yellow (82%)

Blue (73%)

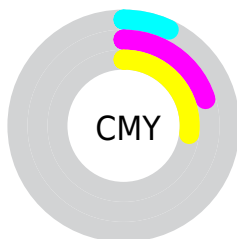


Cyan (0%)

Magenta (15%)

Yellow (21%)

Black (7%)



Cyan (7%)

Magenta (20%)

Yellow (27%)

Brightness & Saturation Gradients

These gradients show how the YUV color 211.6410, -12.1480, 23.1168 changes by changing the brightness by 10 percent. The first figure shows a shift by +10% for each color and the second figure -10%.

Similar to the brightness gradients but the following saturation gradients show a change of the YUV color 211.6410, -12.1480, 23.1168 by changing the saturation by 10% instead.

■ 211.6410,
-12.1480, 23.1168

■ 211.6410,
-12.1480, 23.1168

255.0000, 0.0000,
0.0000

■ 184.0430,
-11.8532, 21.8873

■ 253.6320, -5.2416,
1.1997

■ 157.1570,
-11.4164, 21.7873

■ 130.6730,
-10.6848, 20.4578

■ 105.3740,
-10.5374, 19.8430

■ 80.8900, -9.8058,
18.5135

■ 57.9930, -9.3635,
16.6691

■ 35.9220, -8.3425,

15.8544

■ 13.9760, -6.8902,
16.6840

■ 0.0000, 0.0000,
0.0000

■ 211.6410,
-12.1480, 23.1168

■ 211.6410,
-12.1480, 23.1168

■ 199.5130,
-18.0009, 33.7531

■ 223.7690, -6.2951,
12.4806

■ 186.7980,
-23.5644, 44.9042

■ 236.4840, -0.7316,
1.3295

■ 174.7840,
-28.9805, 55.4404

■ 248.1560, 3.3741,
-8.9068

■ 162.6560,
-34.8334, 66.0767

■ 249.9170, 2.5059,
-10.4512

■ 149.9410,
-40.3969, 77.2277

■ 137.8130,
-46.2498, 87.8640

■ 125.6850,
-52.1027, 98.5003

■ 115.1870,
-56.7872, 107.7070

Harmonies

Analogous

The Analogous color harmony consists of three colors that are next to each other on the color wheel.



212.5580, -6.1911, 25.8206



211.6410, -12.1480, 23.1168



210.3040, -14.4469, 13.7654

Triad

The Triadic color harmony groups three colors that are evenly spaced from another and form a triangle on the color wheel.



211.6410, -12.1480, 23.1168



205.4440, -0.2189, -23.1914



211.4200, 13.1039, -2.9993

Complementary

The Complementary color scheme is a pair of colors which are on the opposite of each other on the color wheel.



211.6410, -12.1480, 23.1168



213.3590, 12.1480, -23.1168

Split Complementary

Split-complementary colors differ from the complementary color scheme. The scheme consists of three colors, the original color and two neighbors of the complement color.



208.7880, 14.8945, -17.3541



211.6410, -12.1480, 23.1168



205.1750, 7.8017, -29.0945

Square

The Square scheme is like the rectangle color scheme, but the four colors are evenly spaced on the color wheel.



211.6410, -12.1480, 23.1168



206.8600, -7.8190, -12.1552



206.2660, 13.1799, -27.4203



212.8410, 7.9664, 11.5404

Rectangle

The Rectangle color scheme consists of four colors that form a rectangle on the color wheel.



211.6410, -12.1480, 23.1168



209.0750, -13.8410, 6.0732



206.2660, 13.1799, -27.4203



210.0280, 14.2832, -7.9176

Sweetspot

The Sweet Spot groups the original color and five complimentary colors.



211.6410, -12.1480, 23.1168



247.4200, -3.6581, 6.6477



206.3530, 8.2070, 27.7544



122.8650, -1.9054, 4.5034



0.0000, 0.0000, 0.0000



128.0000, 0.0000, 0.0000

Same Dimension

The Same Dimension uses a secret algorithm to generate beautiful new colors.



211.6410, -12.1480, 23.1168



221.0610, -15.8061, 29.7645



226.3160, -19.3828, 10.2469



113.9360, -2.9264, 5.3181



89.0620, -43.9076, 83.2606



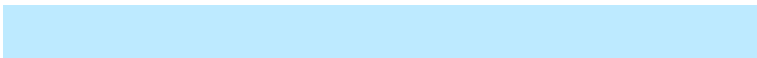
27.3100, -13.4638, 25.1611

Inverse Universe

The Inverse Universe completely reimagines the original color for something new.



213.3590, 12.1480, -23.1168



222.9390, 15.8061, -29.7645



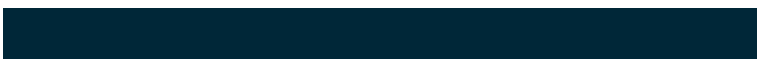
198.6840, 19.3828, -10.2469



114.0640, 2.9264, -5.3181



94.9380, 43.9076, -83.2606



29.2770, 13.1744, -25.6759

Previews

White Background



This preview shows how the YUV color 211.6410, -12.1480, 23.1168 looks on a white background.

Color Contrast Check

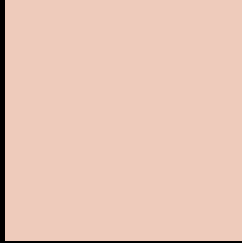
Large Text (above 18pt) WCAG AA × Fail

Any Text WCAG AA × Fail

Large Text (above 18pt) WCAG AAA × Fail

Any Text WCAG AAA × Fail

Black Background



This preview shows how the YUV color 211.6410, -12.1480, 23.1168 looks on a black background.

Color Contrast Check

Large Text (above 18pt) WCAG AA ✓ Pass

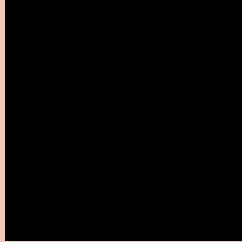
Any Text WCAG AA ✓ Pass

Large Text (above 18pt) WCAG AAA ✓ Pass

Any Text WCAG AAA ✓ Pass

If you want to check with other color combinations, try the [Color Contrast Checker](#).

YUV 211.6410, -12.1480, 23.1168 Background



This preview shows how black text looks on a background with the YUV color 211.6410, -12.1480, 23.1168.



This preview shows how white text looks on a background with the YUV color 211.6410, -12.1480,

Color Blindness Simulation

Color vision deficiency is a very complex topic, and I could not describe the different causes any better than Wikipedia does, so if you want to learn more, you should check out their [article about color blindness](#).

Dichromacy



Original Color

211.6410, -12.1480, 23.1168

Protanopia

210.4110, -10.0626, 7.5326

Deuteranopia

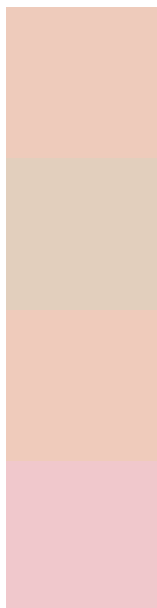
211.9400, -12.2954, 23.7316



Tritanopia

213.2680, 0.3609, 24.3210

Trichromacy



Original Color

211.6410, -12.1480, 23.1168

Protanomaly

210.6290, -10.6631, 13.4804

Deuteranomaly

211.9400, -12.2954, 23.7316

Tritanomaly

212.4160, -4.1491, 24.1912

Monochromacy



Original Color

211.6410, -12.1480, 23.1168

Achromatopsia

212.0000, 0.0000, 0.0000

Achromatomaly

211.9040, -4.3897, 7.9772

CSS Examples

Text

The CSS property to change the color of the text to YUV 211.6410, -12.1480, 23.1168 is called "color". The color property can be set on classes, ids or directly on the HTML element.

This example shows how text in the color `rgb(238, 203, 187)` looks like.

```
.text, #text, p{  
    color:rgb(238, 203, 187)  
}
```

If you want to add a text shadow in that color use the text-shadow property, you can generate a text shadow directly with our [CSS Text Shadow Generator](#).

Here you see how black text with a 4 pixel rgb(238, 203, 187) colored shadow looks like.

```
.shadow{ text-shadow: 4px 4px 2px rgb(238, 203, 187) }
```

Border

The CSS property to change the border of an element to YUV 211.6410, -12.1480, 23.1168 is called "border".

The border property can be set on classes, ids or directly on the HTML element.

This example shows the color as border, it can be applied via the CSS property "border" or "border-color".

```
.border, #border, table{ border:4px solid rgb(238, 203, 187) }
```


If only the border color should be changed use the property `border-color`.

```
.border{ border-color:rgb(238, 203, 187) }
```

If you want to add a box shadow in that color use:

Here you see how a box with a 4 pixel `rgb(238, 203, 187)` colored shadow looks like.

```
.boxshadow{ -moz-box-shadow:4px 4px 4px  
4px rgb(238, 203, 187); -webkit-box-  
shadow:4px 4px 4px 4px rgb(238, 203, 187);  
box-shadow:4px 4px 4px 4px rgb(238, 203,  
187) }
```

Background

The CSS property to change the background color of an element to YUV 211.6410, -12.1480, 23.1168 is called "background". The background property can be set on classes, ids or directly on the HTML element.

```
.background, #background, body{  
background: rgb(238, 203, 187) }
```

If only the background color should be changed can be used:

```
.background{ background-color: rgb(238,  
203, 187) }
```

This example shows the color as background, it is applied via the CSS property "background".

To optimize and compress your CSS code, you can use our [online CSS compressor and optimizer](#) based on csstidy. If you want to create a linear or radial gradient as background or border, check our [CSS Gradient Generator](#).

Hey! You found this booklet interesting? Support Converting Colors with the new Membership Option!

The pro membership hides all ads, plus gives you double the colors in the color bucket, and more awesome pro features!

[Learn more, Memberships starting at \\$2.50/m!](#)

**Follow me
on Twitter!**

@ConvertingColor