

Converting Colors

YUV(211.6900, -13.1582,
20.4429)

Have a look what the booklet for
YUV(211.6900, -13.1582, 20.4429)
contains.

YUV(211.6900, -13.1582, 20.4429)	3
<i>Conversions</i>	4
<i>Details</i>	6
<i>Harmonies</i>	12
<i>Previews</i>	24
<i>Color Blindness Simulation</i>	28
<i>CSS Examples</i>	31

Color

**YUV(211.6900, -13.1582,
20.4429)**

Conversions

Conversions Part 1

Format	Color
Hex	EBCDB9
RGB	235, 205, 185
RGB Percent	92%, 80%, 73%
CMY	0.0784, 0.1961, 0.2745
CMYK	0.00, 0.13, 0.21, 0.08
HSL	24°, 56%, 82%
HSV	24°, 21%, 92%
XYZ	64.8492, 64.8276, 54.9940
YIQ	211.6900, 24.3000, 0.1400

Conversions

Conversions Part 2

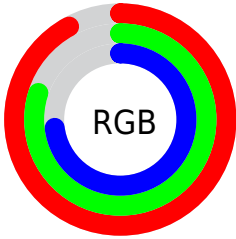
Format	Color
R _Y B	235, 218, 185
Decimal	15453625
CIE Lab	84.39, 7.44, 13.82
CIE LCh	84, 15.694, 61.707
Yxy	64.8276, 0.3512, 0.3510
Android (android.graphics.Color)	4293643705 (0xFFEBCDB9)
YUV	211.6900, -13.1582, 20.4429
Hunter-Lab	80.5156, 2.8660, 15.8645

Details

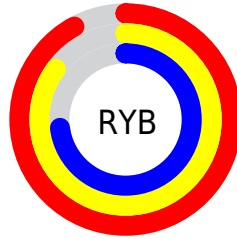
The YUV color $211.6900, -13.1582, 20.4429$ is a light color, and the websafe version is hex FFCCCC . A complement of this color would be $208.3100, 13.1582, -20.4429$, and the grayscale version is $212.0000, 0.0000, 0.0000$.

A 20% lighter version of the original color is $253.4040, -6.1152, 1.3997$, and $157.2060, -12.4266, 19.1133$ is the 20% darker color. If you saturate the color by 10%, you get $200.8500, -19.1530, 29.9496$, and if you desaturate by 10%, it is $222.6440, -6.7265, 10.8362$.

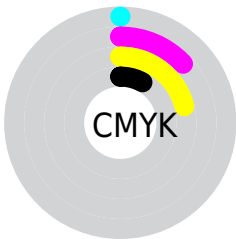
Distribution



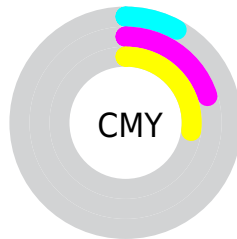
- Red (92%)
- Green (80%)
- Blue (73%)



- Red (92%)
- Yellow (85%)
- Blue (73%)



- Cyan (0%)
- Magenta (13%)
- Yellow (21%)
- Black (8%)



- Cyan (8%)
- Magenta (20%)
- Yellow (27%)

Brightness & Saturation Gradients

These gradients show how the YUV color 211.6900, -13.1582, 20.4429 changes by changing the brightness by 10 percent. The first figure shows a shift by +10% for each color and the second figure -10%.

Similar to the brightness gradients but the following saturation gradients show a change of the YUV color 211.6900, -13.1582, 20.4429 by changing the saturation by 10% instead.

■ 211.6900,
-13.1582, 20.4429

■ 211.6900,
-13.1582, 20.4429

255.0000, 0.0000,
0.0000

■ 184.3910,
-13.0108, 19.8281

■ 253.4040, -6.1152,
1.3997

■ 157.2060,
-12.4266, 19.1133

■ 131.0210,
-11.8424, 18.3986

■ 105.4230,
-11.5475, 17.1690

■ 81.2380, -10.9633,
16.4543

■ 57.8680, -9.7949,
15.0248

■ 36.2700, -9.5001,

13.7952

■ 15.1390, -7.4635,
13.9101

■ 0.0000, 0.0000,
0.0000

■ 211.6900,
-13.1582, 20.4429

■ 211.6900,
-13.1582, 20.4429

■ 200.8500,
-19.1530, 29.9496

■ 222.6440, -6.7265,
10.8362

■ 189.8960,
-25.5847, 39.5562

■ 233.4840, -0.7316,
1.3295

■ 179.0560,
-31.5796, 49.0629

■ 244.3240, 5.2633,
-8.1771

■ 168.1020,
-38.0113, 58.6695

■ 249.0200, 2.9481,
-12.2955

■ 157.2620,
-44.0062, 68.1762

■ 145.7210,
-50.1485, 78.2977

■ 134.8810,
-56.1433, 87.8044

■ 125.4430,
-61.8434, 96.0815

Harmonies

Analogous

The Analogous color harmony consists of three colors that are next to each other on the color wheel.



213.2760, -8.5171, 25.1909



211.6900, -13.1582, 20.4429



210.2820, -14.4360, 10.2767

Triad

The Triadic color harmony groups three colors that are evenly spaced from another and form a triangle on the color wheel.



211.6900, -13.1582, 20.4429



205.2310, 2.8441, -25.6356



212.6980, 11.4879, 2.0189

Complementary

The Complementary color scheme is a pair of colors which are on the opposite of each other on the color wheel.



211.6900, -13.1582, 20.4429



208.3100, 13.1582, -20.4429

Split Complementary

Split-complementary colors differ from the complementary color scheme. The scheme consists of three colors, the original color and two neighbors of the complement color.



210.4080, 14.5889, -12.6358



211.6900, -13.1582, 20.4429



206.0440, 9.8383, -28.9796

Square

The Square scheme is like the rectangle color scheme, but the four colors are evenly spaced on the color wheel.



211.6900, -13.1582, 20.4429



206.8210, -5.3348, -15.6290



207.5160, 14.0426, -24.1315



213.2930, 5.7716, 15.5290

Rectangle

The Rectangle color scheme consists of four colors that form a rectangle on the color wheel.



211.6900, -13.1582, 20.4429



208.9820, -12.8091, 1.7698



207.5160, 14.0426, -24.1315



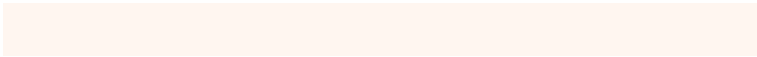
211.4200, 13.1039, -2.9993

Sweetspot

The Sweet Spot groups the original color and five complimentary colors.



211.6900, -13.1582, 20.4429



248.0070, -3.9475, 6.1329



203.3700, 5.7336, 27.7395



123.4520, -2.1948, 3.9886



0.0000, 0.0000, 0.0000



128.0000, 0.0000, 0.0000

Same Dimension

The Same Dimension uses a secret algorithm to generate beautiful new colors.



211.6900, -13.1582, 20.4429



223.9960, -17.2530, 27.1905



226.3650, -20.3929, 7.5729



111.6370, -2.7790, 4.7034



96.3830, -47.5168, 74.2091



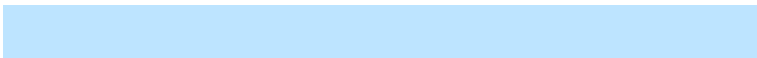
28.4730, -14.0372, 22.3872

Inverse Universe

The Inverse Universe completely reimagines the original color for something new.



208.3100, 13.1582, -20.4429



219.4170, 17.5424, -26.6757



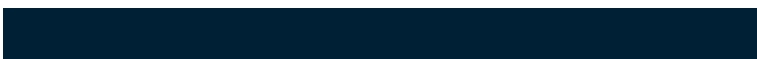
193.6350, 20.3929, -7.5729



111.3630, 2.7790, -4.7034



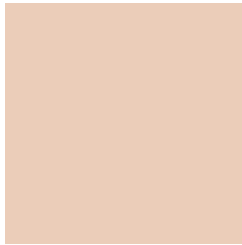
84.6170, 47.5168, -74.2091



24.9400, 14.3266, -21.8724

Previews

White Background



This preview shows how the YUV color 211.6900, -13.1582, 20.4429 looks on a white background.

Color Contrast Check

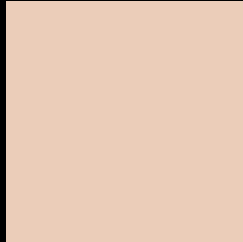
Large Text (above 18pt) WCAG AA × Fail

Any Text WCAG AA × Fail

Large Text (above 18pt) WCAG AAA × Fail

Any Text WCAG AAA × Fail

Black Background



This preview shows how the YUV color 211.6900, -13.1582, 20.4429 looks on a black background.

Color Contrast Check

Large Text (above 18pt) WCAG AA ✓ Pass

Any Text WCAG AA ✓ Pass

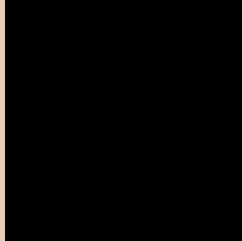
Large Text (above 18pt) WCAG AAA ✓ Pass

Any Text WCAG AAA ✓ Pass

If you want to check with other color combinations, try the [Color Contrast Checker](#).

YUV 211.6900, -13.1582, 20.4429

Background



This preview shows how black text looks on a background with the YUV color 211.6900, -13.1582, 20.4429.



This preview shows how white text looks on a background with the YUV color 211.6900, -13.1582, 20.4429.

Color Blindness Simulation

Color vision deficiency is a very complex topic, and I could not describe the different causes any better than Wikipedia does, so if you want to learn more, you should check out their [article about color blindness](#).

Dichromacy



Original Color

211.6900, -13.1582, 20.4429

Protanopia

210.4820, -11.0836, 8.3473

Deuteranopia

212.0110, -13.3164, 24.5464



Tritanopia

213.4850, 1.2399, 22.3767

Trichromacy



Original Color

211.6900, -13.1582, 20.4429

Protanomaly

210.6890, -11.6787, 12.5507

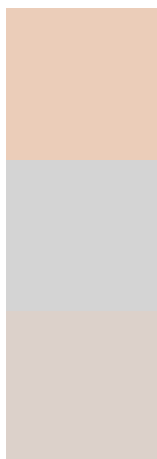
Deuteranomaly

212.0000, -13.3110, 22.8020

Tritanomaly

213.1060, -3.9963, 21.8320

Monochromacy



Original Color

211.6900, -13.1582, 20.4429

Achromatopsia

212.0000, 0.0000, 0.0000

Achromatomaly

211.4910, -4.6791, 7.4624

CSS Examples

Text

The CSS property to change the color of the text to YUV 211.6900, -13.1582, 20.4429 is called "color". The color property can be set on classes, ids or directly on the HTML element.

This example shows how text in the color `rgb(235, 205, 185)` looks like.

```
.text, #text, p{  
    color:rgb(235, 205, 185)  
}
```

If you want to add a text shadow in that color use the text-shadow property, you can generate a text shadow directly with our [CSS Text Shadow Generator](#).

Here you see how black text with a 4 pixel rgb(235, 205, 185) colored shadow looks like.

```
.shadow{ text-shadow: 4px 4px 2px rgb(235, 205, 185) }
```

Border

The CSS property to change the border of an element to YUV 211.6900, -13.1582, 20.4429 is called "border".

The border property can be set on classes, ids or directly on the HTML element.

This example shows the color as border, it can be applied via the CSS property "border" or "border-color".

```
.border, #border, table{ border:4px solid rgb(235, 205, 185) }
```


If only the border color should be changed use the property `border-color`.

```
.border{ border-color:rgb(235, 205, 185) }
```

If you want to add a box shadow in that color use:

Here you see how a box with a 4 pixel `rgb(235, 205, 185)` colored shadow looks like.

```
.boxshadow{ -moz-box-shadow:4px 4px 4px  
4px rgb(235, 205, 185); -webkit-box-  
shadow:4px 4px 4px 4px rgb(235, 205, 185);  
box-shadow:4px 4px 4px 4px rgb(235, 205,  
185) }
```

Background

The CSS property to change the background color of an element to YUV 211.6900, -13.1582, 20.4429 is called "background". The background property can be set on classes, ids or directly on the HTML element.

```
.background, #background, body{  
background: rgb(235, 205, 185) }
```

If only the background color should be changed can be used:

```
.background{ background-color: rgb(235,  
205, 185) }
```

This example shows the color as background, it is applied via the CSS property "background".

To optimize and compress your CSS code, you can use our [online CSS compressor and optimizer](#) based on csstidy. If you want to create a linear or radial gradient as background or border, check our [CSS Gradient Generator](#).

Hey! You found this booklet interesting? Support Converting Colors with the new Membership Option!

The pro membership hides all ads, plus gives you double the colors in the color bucket, and more awesome pro features!

[Learn more, Memberships starting at \\$2.50/m!](#)

**Follow me
on Twitter!**

@ConvertingColor