

Converting Colors

YUV(212.3850, -10.5428,
21.5874)

Have a look what the booklet for
YUV(212.3850, -10.5428, 21.5874)
contains.

YUV(212.3850, -10.5428, 21.5874)	3
<i>Conversions</i>	4
<i>Details</i>	6
<i>Harmonies</i>	12
<i>Previews</i>	24
<i>Color Blindness Simulation</i>	28
<i>CSS Examples</i>	31

Color

**YUV(212.3850, -10.5428,
21.5874)**

Conversions

Conversions Part 1

Format	Color
Hex	EDCCBF
RGB	237, 204, 191
RGB Percent	93%, 80%, 75%
CMY	0.0706, 0.2000, 0.2510
CMYK	0.00, 0.14, 0.19, 0.07
HSL	17°, 56%, 84%
HSV	17°, 19%, 93%
XYZ	65.9219, 64.9518, 58.3527
YIQ	212.3850, 23.8410, 2.9530

Conversions

Conversions Part 2

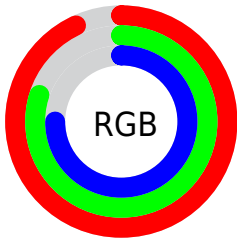
Format	Color
RYB	237, 209, 191
Decimal	15584447
CIELab	84.46, 9.58, 10.75
CIELCh	84, 14.398, 48.308
Yxy	64.9518, 0.3484, 0.3432
Android (android.graphics.Color)	4293774527 (0xFFEDCCBF)
YUV	212.3850, -10.5428, 21.5874
Hunter-Lab	80.5927, 4.9692, 13.4863

Details

The YUV color $212.3850, -10.5428, 21.5874$ is a light color, and the websafe version is hex FFCCCC . A complement of this color would be $215.6150, 10.5428, -21.5874$, and the grayscale version is $212.0000, 0.0000, 0.0000$.

A 20% lighter version of the original color is $254.0880, -3.4944, 0.7998$, and $157.9010, -9.8112, 20.2578$ is the 20% darker color. If you saturate the color by 10%, you get $199.6700, -16.1063, 32.7384$, and if you desaturate by 10%, it is $225.1000, -4.9793, 10.4363$.

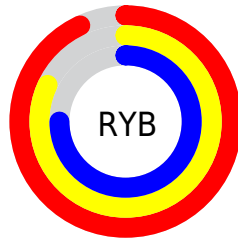
Distribution



Red (93%)

Green (80%)

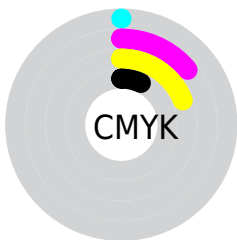
Blue (75%)



Red (93%)

Yellow (82%)

Blue (75%)

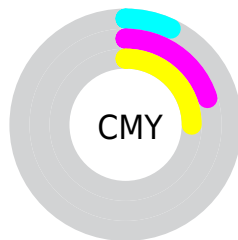


Cyan (0%)

Magenta (14%)

Yellow (19%)

Black (7%)



Cyan (7%)

Magenta (20%)

Yellow (25%)

Brightness & Saturation Gradients

These gradients show how the YUV color 212.3850, -10.5428, 21.5874 changes by changing the brightness by 10 percent. The first figure shows a shift by +10% for each color and the second figure -10%.

Similar to the brightness gradients but the following saturation gradients show a change of the YUV color 212.3850, -10.5428, 21.5874 by changing the saturation by 10% instead.

■ 212.3850,
-10.5428, 21.5874

■ 212.3850,
-10.5428, 21.5874

255.0000, 0.0000,
0.0000

■ 184.7870,
-10.2480, 20.3578

■ 254.0880, -3.4944,
0.7998

■ 157.9010, -9.8112,
20.2578

■ 131.6020, -9.6638,
19.6430

■ 106.1180, -8.9322,
18.3135

■ 81.8190, -8.7848,
17.6987

■ 58.3350, -8.0532,
16.3692

■ 36.5520, -7.1741,

14.4249

■ 14.5630, -7.1796,
16.1692

■ 0.0000, 0.0000,
0.0000

■ 212.3850,
-10.5428, 21.5874

■ 212.3850,
-10.5428, 21.5874

■ 199.6700,
-16.1063, 32.7384

■ 225.1000, -4.9793,
10.4363

■ 187.0690,
-21.2330, 43.7895

■ 237.7010, 0.1474,
-0.6148

■ 174.3540,
-26.7965, 54.9405

■ 249.6180, 2.6533,
-11.0660

■ 161.6390,
-32.3600, 66.0916

■ 149.0380,
-37.4867, 77.1427

■ 136.3230,
-43.0502, 88.2937

■ 123.6080,
-48.6137, 99.4448

■ 110.8930,
-54.1772, 110.5958

■ 110.1920,
-54.3247, 111.2106

Harmonies

Analogous

The Analogous color harmony consists of three colors that are next to each other on the color wheel.



213.4760, -5.1647, 23.2615



212.3850, -10.5428, 21.5874



210.9450, -13.2839, 14.0802

Triad

The Triadic color harmony groups three colors that are evenly spaced from another and form a triangle on the color wheel.



212.3850, -10.5428, 21.5874



206.3520, -0.6665, -19.6027



211.4800, 12.0884, -3.9290

Complementary

The Complementary color scheme is a pair of colors which are on the opposite of each other on the color wheel.



212.3850, -10.5428, 21.5874



215.6150, 10.5428, -21.5874

Split Complementary

Split-complementary colors differ from the complementary color scheme. The scheme consists of three colors, the original color and two neighbors of the complement color.



209.4460, 13.5841, -17.0541



212.3850, -10.5428, 21.5874



206.4420, 6.1911, -25.8206

Square

The Square scheme is like the rectangle color scheme, but the four colors are evenly spaced on the color wheel.



212.3850, -10.5428, 21.5874



207.5830, -7.6824, -9.2813



207.2340, 11.7166, -24.7612



213.1180, 7.8298, 8.6665

Rectangle

The Rectangle color scheme consists of four colors that form a rectangle on the color wheel.



212.3850, -10.5428, 21.5874



210.0150, -12.8254, 7.0028



207.2340, 11.7166, -24.7612



210.9740, 12.8308, -8.7472

Sweetspot

The Sweet Spot groups the original color and five complimentary colors.



212.3850, -10.5428, 21.5874



246.8330, -3.3687, 7.1625



208.6300, 8.0704, 24.8805



122.8650, -1.9054, 4.5034



0.0000, 0.0000, 0.0000



128.0000, 0.0000, 0.0000

Same Dimension

The Same Dimension uses a secret algorithm to generate beautiful new colors.



212.3850, -10.5428, 21.5874



223.6200, -13.6167, 27.5203



225.2990, -16.9094, 10.2618



111.0500, -2.4896, 5.2182



84.0560, -41.4396, 85.0199



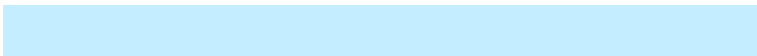
24.9510, -12.3008, 25.4760

Inverse Universe

The Inverse Universe completely reimagines the original color for something new.



215.6150, 10.5428, -21.5874



227.3800, 13.6167, -27.5203



202.7010, 16.9094, -10.2618



111.9500, 2.4897, -5.2181



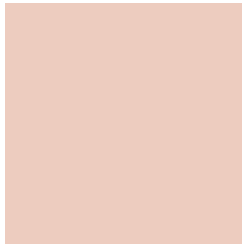
96.9440, 41.4396, -85.0199



28.4620, 12.5902, -24.9612

Previews

White Background



This preview shows how the YUV color 212.3850, -10.5428, 21.5874 looks on a white background.

Color Contrast Check

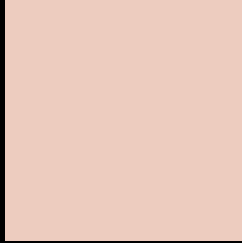
Large Text (above 18pt) WCAG AA × Fail

Any Text WCAG AA × Fail

Large Text (above 18pt) WCAG AAA × Fail

Any Text WCAG AAA × Fail

Black Background



This preview shows how the YUV color 212.3850, -10.5428, 21.5874 looks on a black background.

Color Contrast Check

Large Text (above 18pt) WCAG AA ✓ Pass

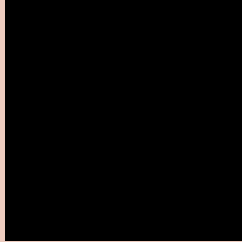
Any Text WCAG AA ✓ Pass

Large Text (above 18pt) WCAG AAA ✓ Pass

Any Text WCAG AAA ✓ Pass

If you want to check with other color combinations, try the [Color Contrast Checker](#).

YUV 212.3850, -10.5428, 21.5874 Background



This preview shows how black text looks on a background with the YUV color 212.3850, -10.5428, 21.5874.



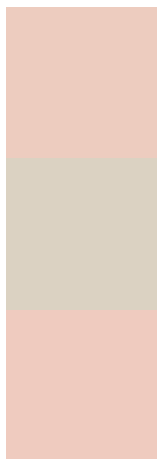
This preview shows how white text looks on a background with the YUV color 212.3850, -10.5428, 21.5874.

21.5874.

Color Blindness Simulation

Color vision deficiency is a very complex topic, and I could not describe the different causes any better than Wikipedia does, so if you want to learn more, you should check out their [article about color blindness](#).

Dichromacy



Original Color

212.3850, -10.5428, 21.5874

Protanopia

210.8670, -8.3154, 7.1326

Deuteranopia

212.3960, -10.5482, 23.3317



Tritanopia

213.7840, 1.0925, 22.9914

Trichromacy



Original Color

212.3850, -10.5428, 21.5874

Protanomaly

211.6720, -9.2053, 12.5657

Deuteranomaly

212.0970, -10.4008, 22.7169

Tritanomaly

213.0460, -2.9807, 22.7617

Monochromacy



Original Color

212.3850, -10.5428, 21.5874

Achromatopsia

212.0000, 0.0000, 0.0000

Achromatomaly

212.0180, -3.9529, 7.8772

CSS Examples

Text

The CSS property to change the color of the text to YUV 212.3850, -10.5428, 21.5874 is called "color". The color property can be set on classes, ids or directly on the HTML element.

This example shows how text in the color `rgb(237, 204, 191)` looks like.

```
.text, #text, p{  
    color:rgb(237, 204, 191)  
}
```

If you want to add a text shadow in that color use the text-shadow property, you can generate a text shadow directly with our [CSS Text Shadow Generator](#).

Here you see how black text with a 4 pixel rgb(237, 204, 191) colored shadow looks like.

```
.shadow{ text-shadow: 4px 4px 2px rgb(237, 204, 191) }
```

Border

The CSS property to change the border of an element to YUV 212.3850, -10.5428, 21.5874 is called "border".

The border property can be set on classes, ids or directly on the HTML element.

This example shows the color as border, it can be applied via the CSS property "border" or "border-color".

```
.border, #border, table{ border:4px solid rgb(237, 204, 191) }
```


If only the border color should be changed use the property border-color.

```
.border{ border-color:rgb(237, 204, 191) }
```

If you want to add a box shadow in that color use:

Here you see how a box with a 4 pixel rgb(237, 204, 191) colored shadow looks like.

```
.boxshadow{ -moz-box-shadow:4px 4px 4px  
4px rgb(237, 204, 191); -webkit-box-  
shadow:4px 4px 4px 4px rgb(237, 204, 191);  
box-shadow:4px 4px 4px 4px rgb(237, 204,  
191) }
```

Background

The CSS property to change the background color of an element to YUV 212.3850, -10.5428, 21.5874 is called "background". The background property can be set on classes, ids or directly on the HTML element.

```
.background, #background, body{  
background: rgb(237, 204, 191) }
```

If only the background color should be changed can be used:

```
.background{ background-color: rgb(237,  
204, 191) }
```

This example shows the color as background, it is applied via the CSS property "background".

To optimize and compress your CSS code, you can use our [online CSS compressor and optimizer](#) based on csstidy. If you want to create a linear or radial gradient as background or border, check our [CSS Gradient Generator](#).

Hey! You found this booklet interesting? Support Converting Colors with the new Membership Option!

The pro membership hides all ads, plus gives you double the colors in the color bucket, and more awesome pro features!

[Learn more, Memberships starting at \\$2.50/m!](#)

**Follow me
on Twitter!**

@ConvertingColor