

Converting Colors

YUV(212.6100, -1.7797,
10.8660)

Have a look what the booklet for
YUV(212.6100, -1.7797, 10.8660)
contains.

YUV(212.6100, -1.7797, 10.8660)	3
<i>Conversions</i>	4
<i>Details</i>	6
<i>Harmonies</i>	12
<i>Previews</i>	24
<i>Color Blindness Simulation</i>	28
<i>CSS Examples</i>	31

Color

**YUV(212.6100, -1.7797,
10.8660)**

Conversions

Conversions Part 1

Format	Color
Hex	E1CFD1
RGB	225, 207, 209
RGB Percent	88%, 81%, 82%
CMY	0.1176, 0.1882, 0.1804
CMYK	0.00, 0.08, 0.07, 0.12
HSL	353°, 23%, 85%
HSV	353°, 8%, 88%
XYZ	64.8728, 65.2366, 69.4944
YIQ	212.6100, 10.0860, 4.4380

Conversions

Conversions Part 2

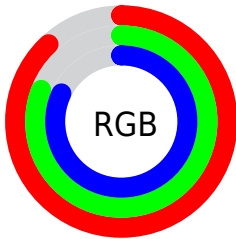
Format	Color
R _Y B	225, 207, 209
Decimal	14798801
CIE Lab	84.61, 6.58, 1.26
CIE LCh	85, 6.703, 10.838
Yxy	65.2366, 0.3250, 0.3268
Android (android.graphics.Color)	4292988881 (0xFFE1CFD1)
YUV	212.6100, -1.7797, 10.8660
Hunter-Lab	80.7692, 2.0228, 5.5249

Details

The YUV color $212.6100, -1.7797, 10.8660$ is a light color, and the websafe version is hex `CCCCCC`. A complement of this color would be $219.3900, 1.7797, -10.8660$, and the grayscale version is $213.0000, 0.0000, 0.0000$.

A 20% lighter version of the original color is $255.0000, 0.0000, 0.0000$, and $158.3110, -1.6323, 10.2513$ is the 20% darker color. If you saturate the color by 10%, you get $197.4160, -4.1491, 24.1912$, and if you desaturate by 10%, it is $228.3910, 0.3002, -2.9739$.

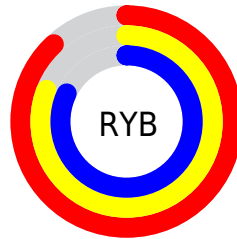
Distribution



Red (88%)

Green (81%)

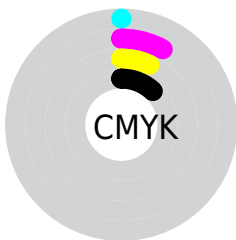
Blue (82%)



Red (88%)

Yellow (81%)

Blue (82%)

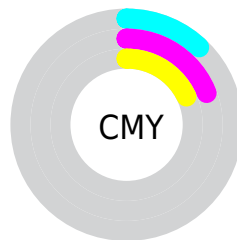


Cyan (0%)

Magenta (8%)

Yellow (7%)

Black (12%)



Cyan (12%)

Magenta (19%)

Yellow (18%)

Brightness & Saturation Gradients

These gradients show how the YUV color 212.6100, -1.7797, 10.8660 changes by changing the brightness by 10 percent. The first figure shows a shift by +10% for each color and the second figure -10%.

Similar to the brightness gradients but the following saturation gradients show a change of the YUV color 212.6100, -1.7797, 10.8660 by changing the saturation by 10% instead.

■ 212.6100, -1.7797,
10.8660

■ 212.6100, -1.7797,
10.8660

255.0000, 0.0000,
0.0000

■ 184.6100, -1.7797,
10.8660

■ 158.3110, -1.6323,
10.2513

■ 132.0120, -1.4849,
9.6365

■ 106.7130, -1.3375,
9.0217

■ 82.7130, -1.3375,
9.0217

■ 59.4140, -1.1901,
8.4069

■ 38.0010, -1.4795,

7.8921

■ 16.1260, -1.0481,
9.5365

■ 0.0000, 0.0000,
0.0000

■ 212.6100, -1.7797,
10.8660

■ 212.6100, -1.7797,
10.8660

■ 197.4160, -4.1491,
24.1912

■ 228.3910, 0.3002,
-2.9739

■ 181.6350, -6.2291,
38.0311

■ 243.5850, 2.6696,
-16.2990

■ 165.8540, -8.3090,
51.8710

■ 246.0300, 4.4222,
-18.4433

■ 150.6600,
-10.6784, 65.1962

■ 135.4660,
-13.0477, 78.5213

■ 119.6850,
-15.1277, 92.3613

■ 103.9040,
-17.2077, 106.2012

■ 88.7100, -19.5770,
119.5263

■ 73.5160, -21.9464,
132.8515

Harmonies

Analogous

The Analogous color harmony consists of three colors that are next to each other on the color wheel.



212.3970, 1.2833, 8.4218



212.6100, -1.7797, 10.8660



212.5130, -4.6899, 10.9511

Triad

The Triadic color harmony groups three colors that are evenly spaced from another and form a triangle on the color wheel.



212.6100, -1.7797, 10.8660



209.8380, -4.3571, -2.4889



210.5520, 6.1369, -8.3771

Complementary

The Complementary color scheme is a pair of colors which are on the opposite of each other on the color wheel.



212.6100, -1.7797, 10.8660



219.3900, 1.7797, -10.8660

Split Complementary

Split-complementary colors differ from the complementary color scheme. The scheme consists of three colors, the original color and two neighbors of the complement color.



209.1880, 4.8373, -11.5659



212.6100, -1.7797, 10.8660



209.6030, -1.2833, -8.4218

Square

The Square scheme is like the rectangle color scheme, but the four colors are evenly spaced on the color wheel.



212.6100, -1.7797, 10.8660



210.5290, -5.6838, 3.0441



209.0910, 1.9271, -11.4808



211.4710, 5.6838, -3.0441

Rectangle

The Rectangle color scheme consists of four colors that form a rectangle on the color wheel.



212.6100, -1.7797, 10.8660



211.8610, -5.8475, 8.8919



209.0910, 1.9271, -11.4808



210.4270, 5.7055, -10.0215

Sweetspot

The Sweet Spot groups the original color and five complimentary colors.



212.6100, -1.7797, 10.8660



251.4950, -0.7370, 3.0739



213.8360, 5.5039, 8.0368



125.8970, -0.4422, 1.8443



0.0000, 0.0000, 0.0000



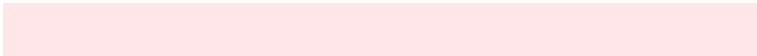
128.0000, 0.0000, 0.0000

Same Dimension

The Same Dimension uses a secret algorithm to generate beautiful new colors.



212.6100, -1.7797, 10.8660



237.7030, -2.8116, 15.1695



216.4910, -4.6791, 7.4624



104.4030, -1.1847, 6.6626



54.9040, -17.2077, 106.2012



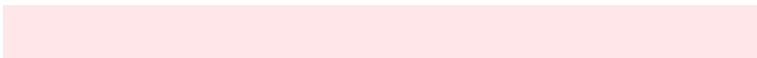
14.9220, -4.8915, 29.0094

Inverse Universe

The Inverse Universe completely reimagines the original color for something new.



212.6100, -1.7797, 10.8660



237.7030, -2.8116, 15.1695



215.5090, 4.6791, -7.4624



104.4030, -1.1847, 6.6626



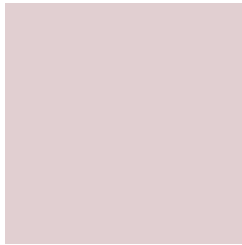
54.9040, -17.2077, 106.2012



14.9220, -4.8915, 29.0094

Previews

White Background



This preview shows how the YUV color 212.6100, -1.7797, 10.8660 looks on a white background.

Color Contrast Check

Large Text (above 18pt) WCAG AA × Fail

Any Text WCAG AA × Fail

Large Text (above 18pt) WCAG AAA × Fail

Any Text WCAG AAA × Fail

Black Background



This preview shows how the YUV color 212.6100, -1.7797, 10.8660 looks on a black background.

Color Contrast Check

Large Text (above 18pt) WCAG AA ✓ Pass

Any Text WCAG AA ✓ Pass

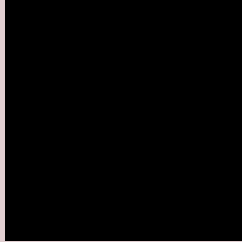
Large Text (above 18pt) WCAG AAA ✓ Pass

Any Text WCAG AAA ✓ Pass

If you want to check with other color combinations, try the [Color Contrast Checker](#).

YUV 212.6100, -1.7797, 10.8660

Background



This preview shows how black text looks on a background with the YUV color 212.6100, -1.7797, 10.8660.



This preview shows how white text looks on a background with the YUV color 212.6100, -1.7797,

10.8660.

Color Blindness Simulation

Color vision deficiency is a very complex topic, and I could not describe the different causes any better than Wikipedia does, so if you want to learn more, you should check out their [article about color blindness](#).

Dichromacy



Original Color

212.6100, -1.7797, 10.8660

Protanopia

211.6090, -0.3002, 2.9739

Deuteranopia

213.0560, -1.5066, 16.6139



Tritanopia

213.4020, 3.7458, 11.9254

Trichromacy



Original Color

212.6100, -1.7797, 10.8660

Protanomaly

212.1040, -1.0373, 6.0478

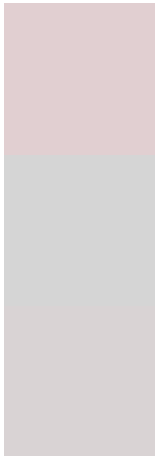
Deuteranomaly

212.7460, -1.3538, 14.2548

Tritanomaly

213.2340, 1.8566, 11.1958

Monochromacy



Original Color

212.6100, -1.7797, 10.8660

Achromatopsia

213.0000, 0.0000, 0.0000

Achromatomaly

212.9080, -0.4476, 3.5887

CSS Examples

Text

The CSS property to change the color of the text to YUV 212.6100, -1.7797, 10.8660 is called "color". The color property can be set on classes, ids or directly on the HTML element.

This example shows how text in the color `rgb(225, 207, 209)` looks like.

```
.text, #text, p{  
    color:rgb(225, 207, 209)  
}
```

If you want to add a text shadow in that color use the text-shadow property, you can generate a text shadow directly with our [CSS Text Shadow Generator](#).

Here you see how black text with a 4 pixel rgb(225, 207, 209) colored shadow looks like.

```
.shadow{ text-shadow: 4px 4px 2px rgb(225, 207, 209) }
```

Border

The CSS property to change the border of an element to YUV 212.6100, -1.7797, 10.8660 is called "border". The border property can be set on classes, ids or directly on the HTML element.

This example shows the color as border, it can be applied via the CSS property "border" or "border-color".

```
.border, #border, table{ border:4px solid rgb(225, 207, 209) }
```


If only the border color should be changed use the property `border-color`.

```
.border{ border-color:rgb(225, 207, 209) }
```

If you want to add a box shadow in that color use:

Here you see how a box with a 4 pixel `rgb(225, 207, 209)` colored shadow looks like.

```
.boxshadow{ -moz-box-shadow:4px 4px 4px  
4px rgb(225, 207, 209); -webkit-box-  
shadow:4px 4px 4px 4px rgb(225, 207, 209);  
box-shadow:4px 4px 4px 4px rgb(225, 207,  
209) }
```

Background

The CSS property to change the background color of an element to YUV 212.6100, -1.7797, 10.8660 is called "background". The background property can be set on classes, ids or directly on the HTML element.

```
.background, #background, body{  
background: rgb(225, 207, 209) }
```

If only the background color should be changed can be used:

```
.background{ background-color: rgb(225,  
207, 209) }
```

This example shows the color as background, it is applied via the CSS property "background".

To optimize and compress your CSS code, you can use our [online CSS compressor and optimizer](#) based on csstidy. If you want to create a linear or radial gradient as background or border, check our [CSS Gradient Generator](#).

Hey! You found this booklet interesting? Support Converting Colors with the new Membership Option!

The pro membership hides all ads, plus gives you double the colors in the color bucket, and more awesome pro features!

[Learn more, Memberships starting at \\$2.50/m!](#)

**Follow me
on Twitter!**

@ConvertingColor